



REPUBLIC
SERVICES

28470 Citrin Drive Romulus, MI 48174
o 734.946.1000 republicservices.com

October 25, 2021

Mr. Allan Batka
United States Environmental Protection Agency
Region 5 (WU-16J)
77 West Jackson Blvd.

Re: RIES Monthly Report

Dear Mr. Batka:

Republic Industrial and Energy Solutions, LLC (RIES) hereby submits the Ninety Fourth Monthly Report ("MR") in conformance with the requirements of its two EPA UIC permits (#s MI-163-1W-C010 & MI-163-1W-C011). RIES is providing all the attached information in the same sequence as required by both subject permits, i.e. Part II. D.1 (a-i), Part III, Attachment A, and Part III, Attachment E.G.2 & E.I.

RIES did not accept F039 waste in September of 2021 so analyses as stated on Page A-3 of 3 of RIES's EPA two UIC permits are not required to be submitted as part of this MR. A short write-up is placed in sections Well 1 and Well 2 explaining the charts and the current state of the chart recorders.

I certify under penalty of law that this document and all attachments were prepared under my direction or supervision in accordance with a system designed to assure that qualified personnel properly gather and evaluate the information submitted. Based on my supervision and interaction with the persons who manage and operate the system, and those persons responsible for the collection of the information, the information submitted is, to the best of my knowledge and belief, true, accurate, and complete. I am aware that there are significant penalties for submitting false information, including the possibility of fine and imprisonment for knowing violations.

We trust that you find this report satisfactory, however, if you have any questions or comments, please feel free to contact us.

Sincerely,



John K. Frost

cc: Rick Sauve (Republic Services)

AVERAGE INJECTION RATE

Calculation of Average Injection RateCURRENT REPORTING YEAR 2021CURRENT REPORTING MONTH September

Date (month, year) of the first injection into either well at the Citrin Road Facility

Nov 2013

CURRENT MONTH (all volumes in gallons)

	Injected Waste	Injected Non-Waste	Total injected
MI-163-1W-C010 , Well #1-12			
Current Month	1,132,333	0	1,132,333
Since facility first injected			36,847,833
MI-163-1W-C011, Well #2-12			
Current Month	1,073,691	0	1,073,691
Since facility first injected			16,895,837
		Lifetime Combined	53,743,670

Conversion factors

365.25 days per year ÷ 12 months per year = 30.4375 days per month

30.4375 days per month × 1440 minutes per day = 43,830 minutes per month

CalculationsWhole number of months of injection 93

93 lifetime number of months of injection × 43,830 minutes/month
 = 4,076,190 minutes of injection

Lifetime combined injected volume 53,743,670 ÷ 4,076,190 minutes of injection
 = 13.18 gpm average injection rate

WELL 1 DATA



Well 01 Monthly Data

	Injection Pressure (psig)		Annulus Tank Level (inch)		Annulus Pressure (psig)		Injection pH		Flow Rate (gpm)		Differential Pressure (psig)	
	Min	Max	Min	Max	Min	Max	Min	Max	Min	Max	Min	Max
9/1/21	135.5	145.0	33.1	33.2	858.6	965.3	6.2	7.3	0.0	0.0	722.6	820.6
9/2/21	120.0	701.4	33.0	33.1	851.3	1,203.1	6.3	7.3	0.0	70.6	426.5	994.7
9/3/21	76	557	33.0	33.1	839.3	1,210.9	6.2	6.8	0.0	51.1	477.3	924.2
9/4/21	97.1	466.5	33.1	33.1	840.5	1207.4	6.2	6.3	0.0	0.0	741.4	916.1
9/5/21	94.8	97.6	33.0	33.1	822.2	840.9	6.1	6.2	0.0	0.0	727.3	743.7
9/6/21	93.3	95.1	33.0	33.1	813.2	822.8	6.1	6.1	0.0	0.0	719.5	728.0
9/7/21	79.5	702.2	33.0	33.2	811.1	1,358.4	6.1	6.4	0.0	85.3	453.7	779.2
9/8/21	97.5	713.4	33.1	33.2	928.8	1359.7	6.1	6.9	0.0	73.2	508.9	957.2
9/9/21	18.5	794.1	33.0	33.2	939.3	1,357.0	6.1	6.6	0.0	71.8	516.3	999.8
9/10/21	24.4	845.6	32.9	33.2	923.8	1,349.7	6.0	6.4	0.0	60.9	481.1	876.0
9/11/21	128.0	755.8	33.1	33.2	841.0	1,290.5	6.1	6.2	0.0	0.0	534.7	845.0
9/12/21	121.1	128.4	33.1	33.1	813.9	842.4	6.2	6.4	0.0	0.0	692.7	714.4
9/13/21	70.9	853.9	33.1	33.2	809.8	1,352.8	6.2	6.4	0.0	61.7	347.8	738.4
9/14/21	20.6	896.4	33.1	33.3	906.3	1,374.1	5.0	7.5	0.0	61.8	427.0	1,012.1
9/15/21	81.5	940.1	33.1	33.2	857.7	1408.9	6.4	7.2	0.0	79.9	390.6	853.9
9/16/21	73.3	940.4	33.1	33.2	886.0	1,425.4	6.4	6.6	0.0	71.5	398.0	821.1
9/17/21	74.5	940.5	33.1	33.3	922.2	1,427.5	6.4	6.6	0.0	68.6	407.0	885.0
9/18/21	121.9	899.4	33.1	33.3	835.2	1,399.7	0.1	6.5	0.0	63.8	405.2	877.8
9/19/21	144.1	153.2	33.0	33.1	799.6	836.4	3.7	3.7	0.0	0.0	655.1	683.5
9/20/21	53.3	813.5	33.0	33.1	794.5	1,315.5	1.6	6.6	0.0	74.0	390.9	860.7
9/21/21	85.3	808.8	32.9	33.1	819.7	1,362.5	2.3	7.7	0.0	70.2	371.3	924.7
9/22/21	142.4	940.2	32.9	32.9	943.8	1,376.2	2.8	7.7	0.0	74.4	423.8	909.7
9/23/21	86.3	939.0	32.8	33.0	791.1	1,362.1	2.3	7.7	0.0	83.7	235.6	829.2
9/24/21	93.7	873.8	32.9	33.0	838.1	1,250.3	6.4	6.8	0.0	75.4	344.1	760.2
9/25/21	132.8	874.9	32.9	33.0	779.3	1244.1	6.6	6.7	0.0	70.0	367.0	739.4
9/26/21	123.9	133.3	32.8	32.9	756.2	780.5	6.6	6.6	0.0	0.0	631.9	647.7
9/27/21	35.7	858.3	32.8	33.0	747.2	1,206.8	2.1	7.9	0.0	84.0	208.2	808.0
9/28/21	62.9	875.7	33.0	33.1	793.5	1276.3	2.2	6.8	0.0	89.1	286.9	819.4
9/29/21	88.0	910.3	33.1	33.1	814.0	1262.2	2.3	6.7	0.0	84.1	280.7	776.0
9/30/21	30.9	937.0	33.1	33.1	816.6	1,287.5	2.1	7.5	0.0	81.3	295.1	794.6

Circle Charts Well 1

As of 8/23/2021, the circle chart recorder for well 1 (circle chart recorder #1) has been repaired by Utilities Instrumentation Services. The circle chart recording paper was delivered on 09/14/2021. Circle chart recording for circle chart recorder #1 began on 09/15/2021. A copy of the recordings has been provided from this date through the end of the month.

Continuous monitoring data is being recorded and backed up on a hard drive system. Upon request from the EPA the data can be accessed and provided for any reporting month. Otherwise, the data recorded every 10 seconds throughout the month would take 259,000 lines of data and more than 2000 extra pages to be added to this report.

Circle Chart Index

Republic Industrial Energy Solutions, LLC 28470 Citrin Drive Romulus, MI 48174

Chart Recorder #1

Channel #1

Blue Pen - Well 1 Injection Pressure (chart value x 30)

Channel #2

Red Pen — Well 1 Annulus Pressure (chart value x 30)

Channel #3

Green Pen — Well 1 Flow Rate (chart value x 4)

Channel #4

Black Pen — Well 1 Annulus Tank Level (chart value x 0)

Chart Recorder #2

Channel #1

Blue Pen — Well 2 Injection Pressure (chart value x 30)

Channel #2

Red Pen — Well 2 Annulus Pressure (chart value x 30)

Channel #3

Green Pen — Well 2 Flow Rate (chart value x 4)

Channel #4

Black Pen — Well 2 Annulus Tank Level (chart value x 0)

Chart Recorder #3

Channel #1

Blue Pen — Injection pH Well 1 & 2 (chart value 3.3)

Channel #2

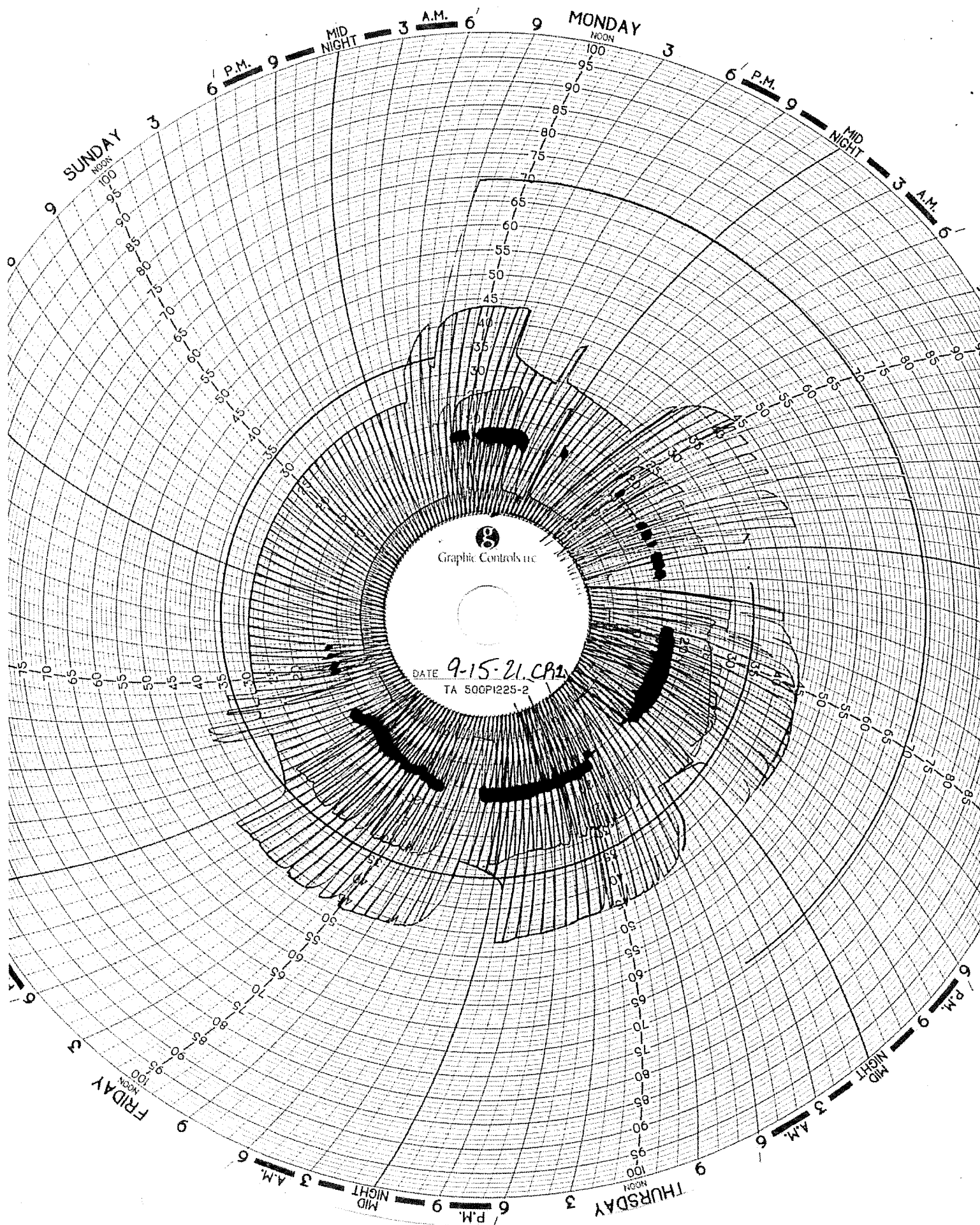
Red Pen — Well 1 Monthly Volume (chart value x 100,000)

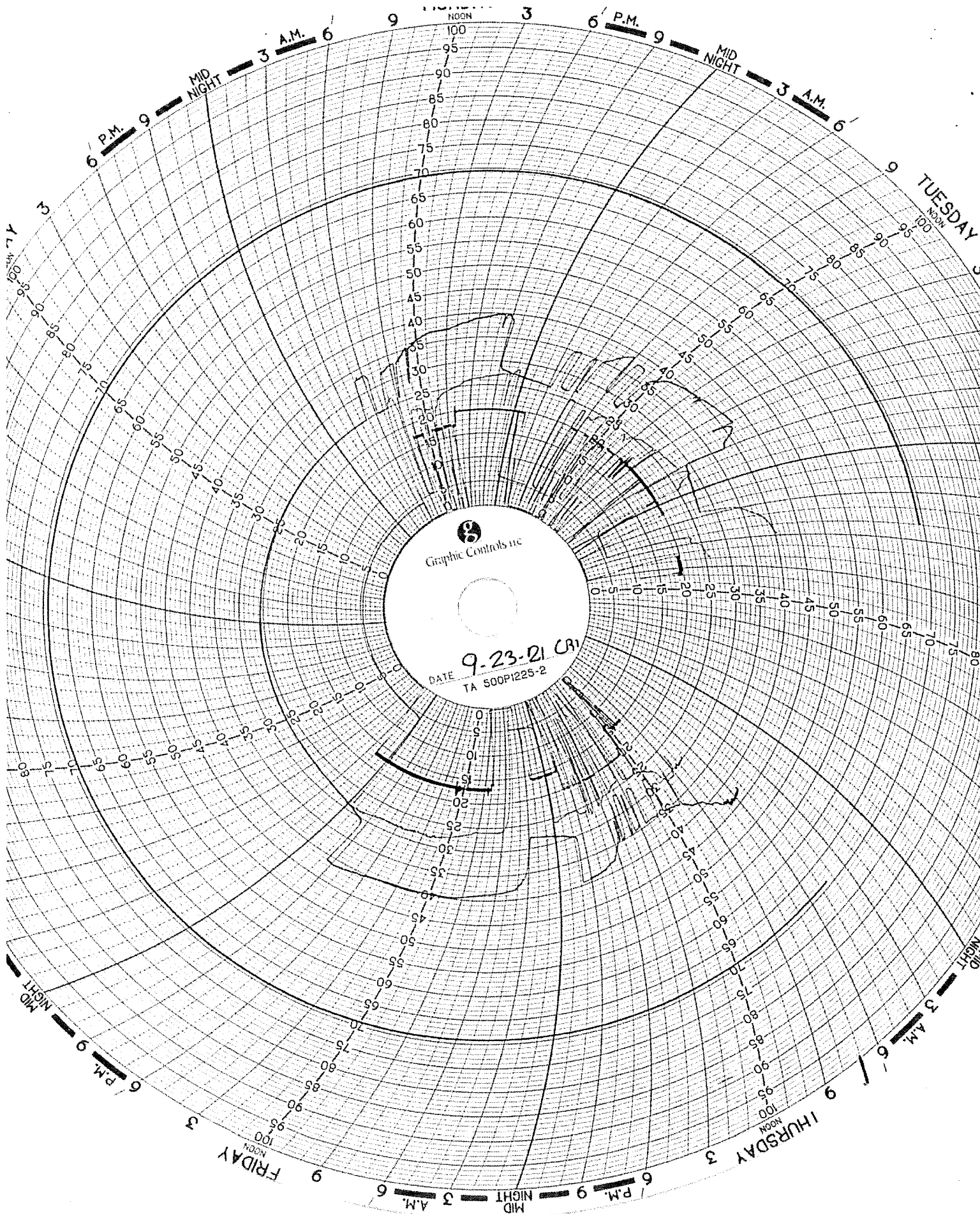
Channel #3

Green Pen — Well 2 Monthly Volume (chart value x 100,000)

channel *tm*

Black Pen — Temperature (chart value x 0)





WELL 2 DATA



REPUBLIC
SERVICES

Well 02 Monthly Data

	Injection Pressure (psig)		Annulus Tank Level (inch)		Annulus Pressure (psig)		Injection pH		Flow Rate (gpm)		Differential Pressure (psig)	
	Min	Max	Min	Max	Min	Max	Min	Max	Min	Max	Min	Max
9/1/21	134.5	145.0	34.8	35.0	970.3	1,083.1	7.1	7.3	0.0	0.0	835.3	938.4
9/2/21	121.0	822.4	34.8	34.9	964.0	1,375.0	6.3	7.3	0.0	74.6	487.6	925.1
9/3/21	47.9	808.4	34.7	34.9	953.5	1,528.2	6.2	6.8	0.0	73.1	484.9	992.8
9/4/21	97.9	745.9	34.8	34.9	963.7	1,525.8	6.2	6.3	0.0	0.0	781.8	1,083.7
9/5/21	95.2	98.6	34.8	34.9	943.8	963.8	6.1	6.2	0.0	0.0	848.0	865.9
9/6/21	93.7	95.8	34.7	34.8	935.9	944.1	6.1	6.1	0.0	0.0	841.5	848.7
9/7/21	93.4	900.0	34.7	34.9	934.0	1,544.9	6.1	7.5	0.0	76.7	516.3	1,074.0
9/8/21	126.5	796.9	34.8	34.9	1017.0	1517.3	6.1	7.5	0.0	53.9	567.3	1,050.8
9/9/21	-9.4	933.6	34.8	34.9	1056.0	1,511.8	1.4	7.5	0.0	193.7	571.1	1,163.6
9/10/21	137.1	940.1	34.8	35.0	1051.6	1,528.6	4.3	7.1	0.0	61.9	528.0	1,000.9
9/11/21	128.0	729.4	34.8	34.9	970.6	1,424.7	6.1	6.2	0.0	0.0	693.8	974.9
9/12/21	120.8	128.7	34.8	34.8	947.3	970.9	6.2	6.4	0.0	0.0	825.6	842.9
9/13/21	119.5	925.3	34.8	34.9	943.9	1,560.1	6.2	6.4	0.0	60.7	441.1	826.8
9/14/21	135.7	940.2	34.8	35.0	1053.7	1,574.4	5.1	7.5	0.0	65.0	534.2	1,050.1
9/15/21	124.3	951.8	35.0	35.0	1001.6	1579.5	6.4	7.2	0.0	79.8	491.0	1,004.3
9/16/21	134.0	940.5	34.9	34.9	1034.2	1,572.7	3.0	7.8	0.0	65.9	522.8	958.6
9/17/21	140.7	940.4	34.8	35.0	1070.0	1,596.2	6.4	6.6	0.0	59.9	561.2	1,032.1
9/18/21	138.1	899.8	34.8	35.0	986.2	1,572.3	0.1	6.5	0.0	57.1	538.6	1,034.1
9/19/21	143.1	153.3	34.7	34.8	952.8	986.5	3.7	3.7	0.0	0.0	808.8	833.8
9/20/21	137.2	827.9	34.7	34.8	948.3	1,522.1	1.6	7.4	0.0	71.6	541.0	1,009.5
9/21/21	133.5	844.7	34.7	34.8	965.8	1,577.6	2.3	7.7	0.0	69.9	525.6	1,021.8
9/22/21	146.3	940.0	34.6	34.7	1118.2	1,584.3	2.8	7.7	0.0	70.9	574.8	1,074.1
9/23/21	138.1	940.2	34.6	34.7	952.5	1,548.5	2.3	7.7	0.0	82.6	380.5	1,001.6
9/24/21	146.1	939.7	34.6	34.7	1,007.5	1,468.7	6.4	6.8	0.0	71.3	480.7	907.3
9/25/21	133.7	934.4	34.5	34.7	950.6	1,461.3	6.6	6.7	0.0	64.4	524.5	904.4
9/26/21	123.9	134.5	34.5	34.6	929.4	950.8	6.6	6.6	0.0	0.0	804.7	817.0
9/27/21	121.7	939.7	34.5	34.7	913.5	1,448.6	2.1	7.9	0.0	82.3	359.4	851.7
9/28/21	158.4	939.8	34.7	34.7	973.9	1520.0	2.2	6.8	0.0	80.2	425.5	915.7
9/29/21	169.7	940.2	34.8	34.8	998.5	1507.8	2.3	6.7	0.0	77.2	465.0	863.8
9/30/21	171.3	941.2	34.8	34.8	998.5	1,502.9	2.1	7.5	0.0	80.0	479.1	857.7

Circle Chart Index

Republic Industrial Energy Solutions, LLC 28470 Citrin Drive Romulus, MI 48174

Chart Recorder #1

Channel #1

Blue Pen - Well 1 Injection Pressure (chart value x 30)

Channel #2

Red Pen — Well 1 Annulus Pressure (chart value x 30)

Channel #3

Green Pen — Well 1 Flow Rate (chart value x 4)

Channel #4

Black Pen — Well 1 Annulus Tank Level (chart value x 0)

Chart Recorder #2

Channel #1

Blue Pen — Well 2 Injection Pressure (chart value x 30)

Channel #2

Red Pen — Well 2 Annulus Pressure (chart value x 30)

Channel #3

Green Pen — Well 2 Flow Rate (chart value x 4)

Channel #4

Black Pen — Well 2 Annulus Tank Level (chart value x 0)

Chart Recorder #3

Channel #1

Blue Pen — Injection pH Well 1 & 2 (chart value 3.3)

Channel #2

Red Pen — Well 1 Monthly Volume (chart value x 100,000)

Channel #3

Green Pen — Well 2 Monthly Volume (chart value x 100,000)

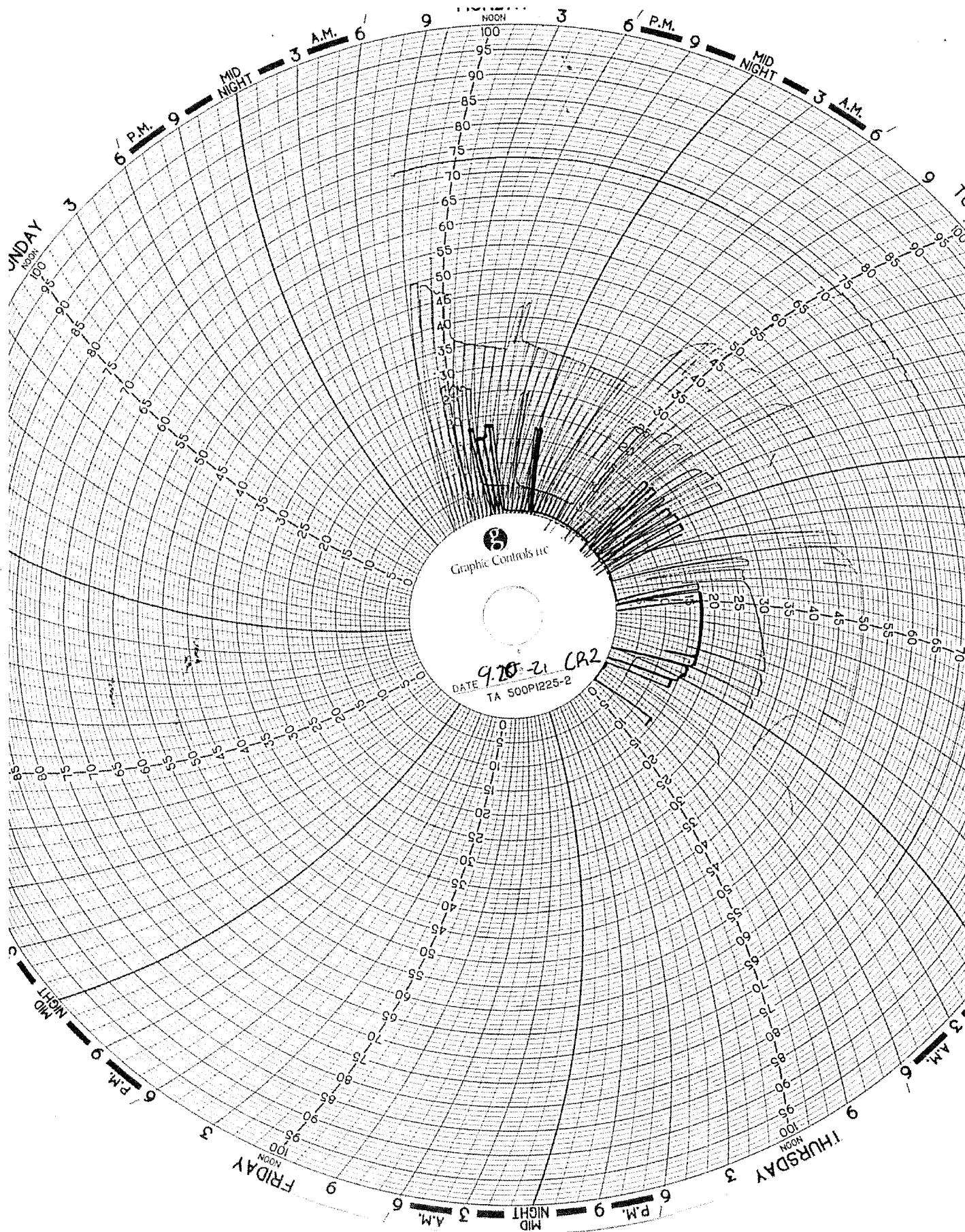
channel *tm*

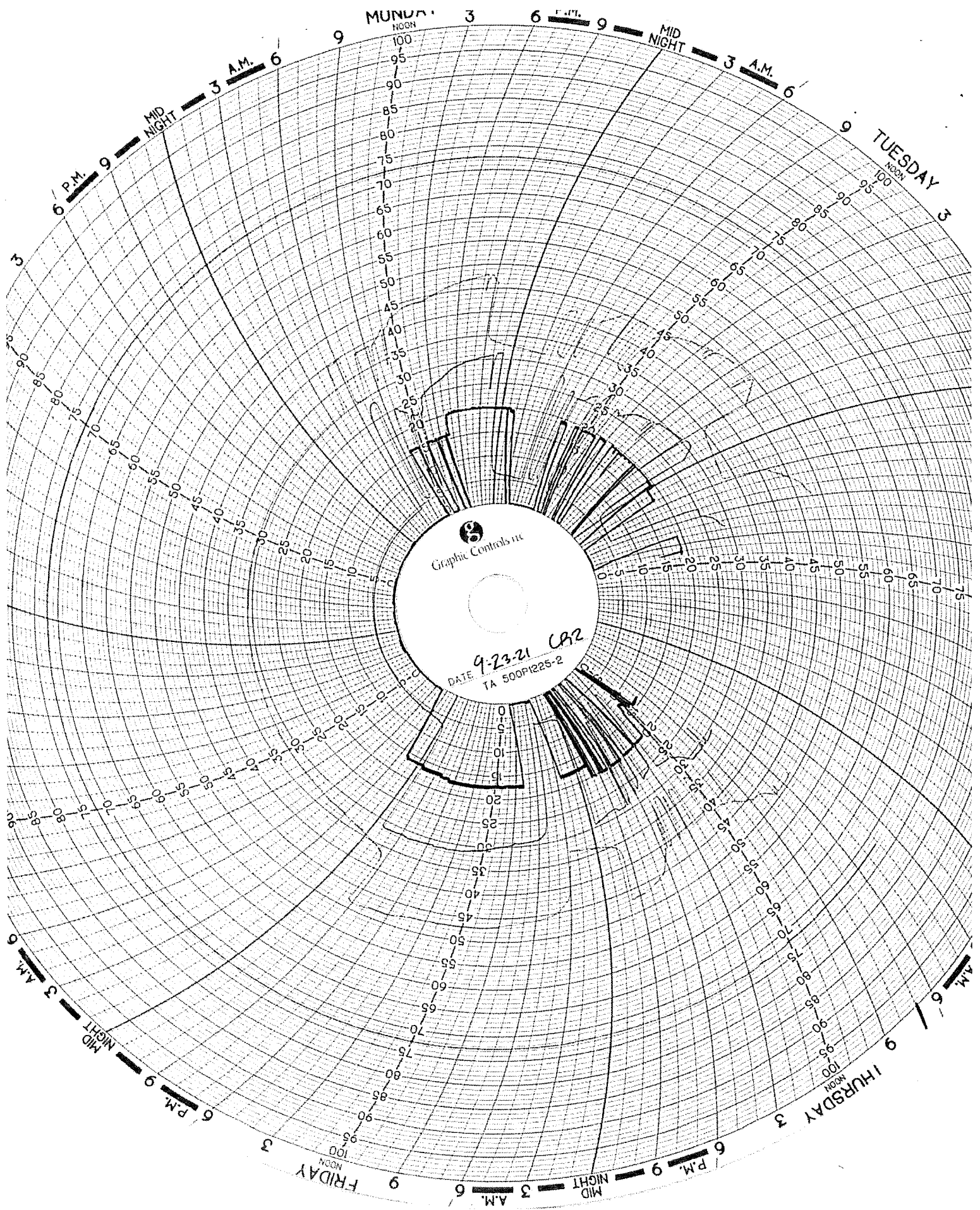
Black Pen — Temperature (chart value x 0)

Circle Charts Well 2

As of 9/20/2021, the circle chart recorder for well 2 (circle chart recorder #2) has been repaired by Utilities Instrumentation Services. Circle chart recording for circle chart recorder #2 began on 09/20/2021. A copy of the recordings has been provided from this date through the end of the month.

Continuous monitoring data is being recorded and backed up on a hard drive system. Upon request from the EPA the data can be accessed and provided for any reporting month. Otherwise, the data recorded every 10 seconds throughout the month would take 259,000 lines of data and more than 2000 extra pages to be added to this report.





Circle Chart Recorder #3

Circle chart recorder #3 is broken and a replacement is on order. Upon reception of a replacement recorder, installation will be performed by Utility Instrumentation Services. Circle chart recorders #1 and #2 have been replaced by Utility Instrumentation Services in September 2021. Continuous monitoring data is being recorded and backed up on a hard drive system. Upon request from the EPA the data can be accessed and provided for any reporting month. Otherwise, the data recorded every 10 seconds throughout the month would take 259,000 lines of data and more than 2000 extra pages to be added to this report.

CORROSION MONITORING

CORROSION MONITORING PLAN
COUPON SUMMARY

Date	Hastelloy	Stainless Steel	Fiberglass	
	(C267)	(316L)	(Redbox)	
12/19/2013	13.330 g	10.848 g	7.309 g	Initial Mass @ start up
2/21/2014	13.329 g	10.846 g	7.306 g	
3/10/2014	13.327 g	10.845 g	7.300 g	
4/18/2014	13.324 g	10.841 g	7.272 g	
5/30/2014	13.328 g	10.818 g	7.226 g	
6/30/2014	13.321 g	10.337 g	7.196 g	
7/11/2014	13.323 g	10.304 g	7.196 g	
8/12/2014	13.328 g	10.045 g	7.182 g	
9/17/2014	13.321 g	9.997 g	7.090 g	
10/30/2014	13.321 g	9.387 g	7.075 g	
11/21/2014	13.320 g	9.386 g	7.069 g	
12/19/2014	13.321 g	9.315 g	7.084 g	
1/12/2015	13.321 g	9.289 g	7.063 g	New hastelloy coupon
2/23/2015	13.339 g	9.286 g	7.005 g	
3/31/2015	13.339 g	9.286 g	7.005 g	
4/27/2015	13.335 g	9.130 g	6.852 g	
5/21/2015	13.336 g	9.124 g	6.809 g	
6/12/2015	13.334 g	9.126 g	6.819 g	
7/27/2015	13.337 g	9.127 g	6.818 g	
8/26/2015	13.337 g	9.022 g	6.780 g	
9/21/2015	13.336 g	8.987 g	6.792 g	
10/19/2015	13.335 g	8.985 g	6.797 g	
11/16/2015	13.334 g	8.982 g	6.788 g	
12/17/2015	13.334 g	8.933 g	6.791 g	New stainless steel coupon
1/29/2016	13.334 g	8.931 g	6.788 g	
2/16/2016	13.332 g	8.799 g	6.757 g	
3/31/2016	13.339 g	9.286 g	7.005 g	
4/22/2016	13.333 g	8.590 g	6.744 g	
5/31/2015	13.334 g	6.084 g	6.784 g	
6/30/2016	13.328 g	10.942 g	6.793 g	
8/3/2016	13.326 g	10.529 g	6.743 g	
8/29/2016	13.325 g	10.020 g	6.723 g	
10/27/2016	13.325 g	8.765 g	6.708 g	
11/29/2016	13.327 g	8.571 g	6.740 g	
12/12/2016	13.323 g	8.223 g	6.717 g	New Fiberglass coupon
1/3/2017	13.325 g	8.059 g	6.712 g	
2/28/2017	13.324 g	7.634 g	6.727 g	
3/24/2017	13.325 g	7.370 g	6.732 g	
4/28/2017	13.325 g	6.736 g	6.736 g	
5/11/2017	13.323 g	7.352 g	6.689 g	
6/12/2017	13.323 g	7.357 g	6.689 g	
7/5/2017	13.323 g	7.355 g	6.689 g	
8/30/2017	13.324 g	7.353 g	18.105 g	
9/28/2017	13.325 g	7.352 g	18.060 g	
10/11/2017	13.324 g	7.350 g	18.038 g	
11/16/2017	13.325 g	7.363 g	18.047 g	
12/12/2017	13.326 g	7.308 g	18.307 g	

CORROSION MONITORING PLAN
COUPON SUMMARY

Date	Hastelloy	Stainless Steel	Fiberglass	
1/29/2018	13.326 g	10.930 g	18.027 g	New stainless steel coupon
2/9/2018	13.325 g	10.932 g	18.044 g	
3/19/2018	13.325 g	10.926 g	18.030 g	
4/16/2018	13.336 g	10.863 g	18.068 g	
5/17/2018	13.325 g	10.858 g	18.037 g	
6/20/2018	13.325 g	10.855 g	18.029 g	
7/12/2018	13.326 g	10.852 g	18.032 g	
8/21/2018	13.326 g	10.854 g	18.031 g	
9/14/2018	13.326 g	10.852 g	18.036 g	
10/10/2018	13.326 g	10.851 g	18.031 g	
11/20/2018	13.326 g	10.853 g	18.032 g	
12/11/2018	13.326 g	10.852 g	18.033 g	
1/14/2019	13.326 g	10.852 g	18.033 g	
2/20/2019	13.326 g	10.850 g	18.033 g	
3/15/2019	13.326 g	10.850 g	18.033 g	
4/10/2019	13.326 g	10.848 g	18.031 g	
5/17/2019	13.326 g	10.849 g	18.036 g	
6/5/2019	13.326 g	10.848 g	18.031 g	
7/8/2019	13.326 g	10.845 g	18.032 g	
8/12/2019	13.326 g	10.845 g	18.032 g	
9/8/2019	13.326 g	10.842 g	18.029 g	
10/17/2019	13.326 g	10.842 g	18.030 g	
11/20/2019	13.326 g	10.842 g	18.030 g	
12/11/2019	13.326 g	10.842 g	18.030 g	
1/16/2020	13.326 g	10.840 g	18.033 g	
2/6/2020	13.326 g	10.836 g	18.034 g	
3/3/2020	13.326 g	10.842 g	18.034 g	
4/9/2020	13.328 g	10.839 g	18.037 g	
5/12/2020	13.322 g	10.830 g	18.035 g	
6/16/2020	13.316 g	10.771 g	18.009 g	
7/16/2020	13.308 g	10.560 g	17.843 g	
8/25/2020	13.310 g	10.214 g	17.773 g	
9/24/2020	13.289 g	9.796 g	17.656 g	
10/19/2020	13.282g	9.737g	17.621g	
11/5/2020	13.280g	9.728g	17.600g	
12/3/2020	13.281g	9.730g	17.689g	
2/10/2021	13.284g	9.728g	17.683g	
3/9/2021	13.290g	9.733g	17.585g	
4/13/2021	13.288g	9.730g	17.649g	
5/18/2021	13.282g	9.691g	17.543g	
6/17/2021	13.279g	9.639g	17.546g	
7/19/2021	13.278g	9.480g	17.507g	
8/3/2021	13.278g	9.437g	17.467g	
9/14/2021	13.277g	9.392g	17.467g	
10/11/2021	13.277g	9.359g	17.465g	
				Well 1 workover new well

Date: 10/11/2021
Material: Fiberglass
Weight: 17.465 g



Date: 10/11/2021
Material: C276 5
Weight: 13.277 g



Date: 10/11/2021
Material: C1563/316L
Weight: 9.359 g



CORROSION MONITORING COUPONS BASELINE VISUAL DESCRIPTION

November 4, 2013

Fiberglass

The fiberglass coupon is Red Box 2000 type and is 2-1/2 inches long by 1/2 inch wide and 1/4 inches thick. It is a dark orange (rust) in color with a glossy shine on one side a polished look on the opposite side and the cut edges look sanded.

Hastelloy

The hastelloy coupon is identified as C276 with serial number 1. The dimensions of the coupon are 3 inches long by 1/2 inch wide and 1/4 inch thick. The coupon is silver in color with a lightly sandblasted surface.

Stainless Steel

The stainless steel coupon is identified as 316L with serial number C1562. The dimensions of the coupon are 3 inches long by 1/2 inch wide and 1/4 inch thick. The coupon is silver in color with a lightly sandblasted surface.



Progress Through Innovation, Technology and Customer Satisfaction

October 22, 2015

• TEST REPORT •

PN 125322

PO 00154

PLASTICS TESTING DEPARTMENT


Prepared For:

John Frost
Environmental Geo-Technologies, LLC
28470 Citrin Drive
Romulus, MI 48174

Prepared By:


Melissa Martin
Sr. Project Technician

Approved By:


Jim Drummond, Sr.
Physical & Plastic Testing, Manager



An A2LA ISO 17025 Accredited Testing Laboratory — Certificate Numbers 255.01 & 255.02
ISO 9001:2008 Registered

ISO 9001:2008
Registered

Letters and reports are for the exclusive use of the clients to whom they are addressed and shall not be reproduced, except in full, without the written permission of Akron Rubber Development Laboratory, Inc. (ARDL). The information contained herein applies to the specific material, products or processes tested or evaluated. No warranty of any kind is herein construed or implied. The liability of ARDL, Inc. shall be limited to the amount of consideration paid for services. ARDL, Inc. is ISO 17025 accredited by A2LA for the test methods listed on the attached scope.

www.ardl.com | 2887 Gilchrist Rd. | Akron, Ohio 44305 | answers@ardl.com | Toll Free (800) 830-ARDL

Fax (330) 794-6610 | Worldwide (330) 794-6600

October 22, 2015

John Frost
Environmental Geo-Technologies, LLC

Page 2 of 2
PN 125322

SUBJECT: Barcol Hardness on one material.

RECEIVED: One small section identified as; Fiberglass Coupon.

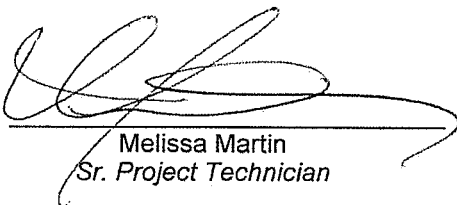
BARCOL HARDNESS ASTM D 2583-13a
Instant Reading

Results

Barcol Hardness, Instant

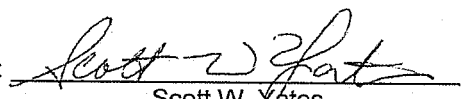
96

Prepared By:


Melissa Martin
Sr. Project Technician

tc

Approved By:


Scott W. Yates
Plastics Testing Assistant Manager

December 12, 2016

TEST REPORT

PN 132662
PO

PLASTICS TESTING DEPARTMENT

Prepared For:

John Frost
Environmental Geo-Technologies, LLC
28470 Citrin Drive
Romulus, MI 48174

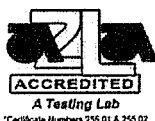
Prepared By:

[Signature]
Melissa Martin
Senior Project Technician

Rev 041916

Approved By:

[Signature]
Jim Drummond
Physical Testing, Manager



An A2LA ISO 17025 Accredited Testing Laboratory — Certificate Numbers 255.01 & 255.02
ISO 9001:2008 Registered

ISO 9001:2008
Registered

Letters and reports are for the exclusive use of the clients to whom they are addressed and shall not be reproduced, except in full, without the written permission of Akron Rubber Development Laboratory, Inc. (ARDL). The information contained herein applies to the specific material, products or processes tested or evaluated. No warranty of any kind is herein construed or implied. The liability of ARDL, Inc. shall be limited to the amount of consideration paid for services. ARDL, Inc. is ISO 17025 accredited by A2LA for the test methods listed on the referenced certificates.



December 12, 2016

John Frost
Environmental Geo-Technologies, LLC

Page 2 of 2
PN 132662

SUBJECT: Barcol Hardness on one (1) material.


RECEIVED: One (1) small section identified as; Fiberglass Coupon.

BARCOL HARDNESS ASTM D 2583-13a
Instant Reading

RESULTS

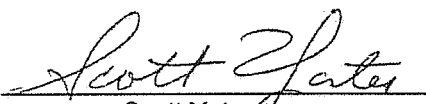
Barcol Hardness, Instant 96

Prepared By:


Melissa Martin
Senior Project Technician

wk

Approved By:


Scott Yates
Plastics Testing, Assistant Manager

ARDL is ISO 17025 accredited by A2LA for the test methods listed on the certificates referenced on page one. NOTE: Non-ISO 17025 accredited test methods are designated with the ^ symbol to differentiate from ISO 17025 accredited methods in the body of the test report.



Progress Through Innovation, Technology and Customer Satisfaction

December 13, 2017

TEST REPORT

PN 139140

PO#

PLASTIC TESTING DEPARTMENT

Prepared For:

John Frost
Environmental Geo-Technologies, LLC
28470 Citrin Drive
Romulus, MI 48174

Prepared By:

Melissa Martin
Sr Project Technician

Approved By:

Jim Drummond
Rubber & Plastic Testing, Manager

Rev 041916



An A2LA ISO 17025 Accredited Testing Laboratory — Certificate Numbers 255.01 & 255.02
ISO 9001:2008 Registered

ISO 9001:2008
Registered

Letters and reports are for the exclusive use of the clients to whom they are addressed and shall not be reproduced, except in full, without the written permission of Akron Rubber Development Laboratory, Inc. (ARDL). The information contained herein applies to the specific material, products or processes tested or evaluated. No warranty of any kind is herein construed or implied. The liability of ARDL, Inc. shall be limited to the amount of consideration paid for services. ARDL, Inc. is ISO 17025 accredited by A2LA for the test methods listed on the referenced certificates.



December 13, 2017

John Frost
Environmental Geo-Technologies, LLC

Page 2 of 2
PN 139140

SUBJECT: Barcol Hardness on one material.

RECEIVED: One small section identified as; Fiberglass Coupon.


BARCOL HARDNESS ASTM D 2583-13a
Instant Reading

Results

Barcol Hardness, Instant

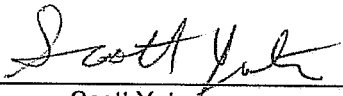
96

Prepared By:


Melissa Martin
Sr Project Technician

sc

Approved By:


Scott Yates
Plastics Testing, Assistant Manager

ARDL is ISO 17025 accredited by A2LA for the test methods listed on the certificates referenced on page one. NOTE: Non-ISO 17025 accredited test methods are designated with the ^ symbol to differentiate from ISO 17025 accredited methods in the body of the test report.

Ghesquiere Plastic Testing, Inc.

20450 HARPER AVENUE
HARPER WOODS, MI 48225
PHONE (313) 885-3535
FAX (313) 885-1771

Report Date: November 15, 2013
Test Date: October 15 - November 14, 2013

Report #1310-77651
Performed for:
Environmental Geo-Technologies
28470 Citrin Drive
Romulus, MI 48174

Attention: Mr. Don Anderson

WORK REQUESTED:

Perform Barcol Hardness test on sample submitted.

DESCRIPTION OF SAMPLE:

Sample submitted was identified as a fiberglass test coupon.

(P. O. #Credit Card).

WORK PERFORMED:

Test specimen was prepared as necessary and conditioned for a minimum of 24 hours at standard laboratory conditions prior to testing.

Barcol Hardness test was performed in accordance with the procedures of ASTM D2583-13. One specimen was tested.

RESULTS:

The following determination was made based upon the above test:

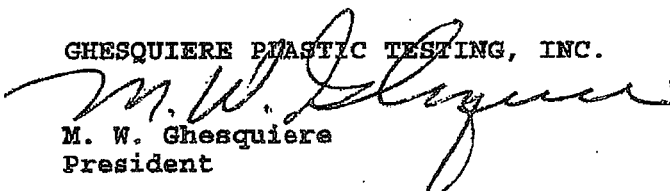
BARCOL HARDNESS

Hardness

Specimen 1	90
------------	----

Specimen is being returned with this report for further evaluation.

Ghesquiere Plastic Testing, Inc.


M. W. Ghesquiere
President

MWG/kni

Our letters and reports are for the exclusive use of the client to whom they are addressed, and shall not be reproduced except in full without our written approval. Our letters and reports apply only to the sample tested and are not necessarily indicative of the qualities of apparently identical or similar products. The letters and reports and the name of Ghesquiere Plastic Testing, Inc., are not to be used under any circumstances in advertising to the general public. Samples, extra and related test materials will be destroyed 30 days after the date of the final report unless the client indicates otherwise in writing.

TOTAL 1 PAGES

Ghesquiere Plastic Testing, Inc.

20450 HARPER AVENUE
HARPER WOODS, MI 48225
PHONE (313) 885-3535
FAX (313) 885-1771

Report Date: February 17, 2014
Test Date: February 14 - 17, 2014

Report #1402-78036
Performed for:
Environmental Geo-Technologies
28470 Citrin Drive
Romulus, MI 48174

Attention: Mr. Don Anderson

WORK REQUESTED:

Perform Barcol Hardness test on sample submitted.

DESCRIPTION OF SAMPLE:

Sample submitted was identified as a fiberglass test coupon.

(P. O. #Credit Card).

WORK PERFORMED:

Test specimen was prepared as necessary and conditioned for a minimum of 24 hours at standard laboratory conditions prior to testing.

Barcol Hardness test was performed in accordance with the procedures of ASTM D2583-13. One specimen was tested.

RESULTS:

The following determination was made based upon the above test:

BARCOL HARDNESS

Hardness

Specimen 1, 90

Specimen was returned to the client on February 17, 2014.

Ghesquiere Plastic Testing, Inc.

M. W. Ghesquiere
President

MWG/dm

Our letters and reports are for the exclusive use of the client to whom they are addressed, and shall not be reproduced except in full without our written approval. Our letters and reports apply only to the sample tested and are not necessarily indicative of the qualities of apparently identical or similar products. The letters and reports and the name of Ghesquiere Plastic Testing, Inc., are not to be used under any circumstances in advertising to the general public. Samples, extra and related test materials will be destroyed 30 days after the date of the final report unless the client indicates otherwise in writing.

TOTAL 1 PAGES

Ghesquiere Plastic Testing, Inc.

20450 HARPER AVENUE
HARPER WOODS, MI 48225
PHONE (313) 885-3535
FAX (313) 885-1771

Report Date: June 16, 2014
Test Date: June 13 - 16, 2014

Report #1406-78499
Performed for:
Environmental Geo-Technologies, LLC
28470 Citrin Drive
Romulus, MI 48174

Attention: Mr. Don Anderson

WORK REQUESTED:

Perform Barcol Hardness test on sample submitted.

DESCRIPTION OF SAMPLE:

Sample submitted was identified as a fiberglass test coupon.
(P. O. #Credit Card).

WORK PERFORMED:

Test specimen was prepared as necessary and conditioned for a minimum of 24 hours at standard laboratory conditions prior to testing.

Barcol Hardness test was performed in accordance with the procedures of ASTM D2583-13. One specimen was tested.

RESULTS:

The following determination was made based upon the above test:

BARCOL HARDNESS

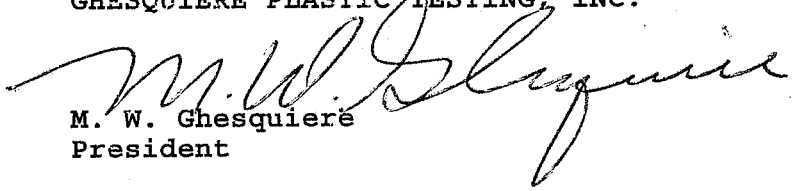
Hardness

Specimen 1

85

Specimen was returned to the client June 16, 2014.

Ghesquiere Plastic Testing, Inc.


M. W. Ghesquiere
President

MWG/dm

October 2, 2014

• TEST REPORT •

PN 118325


PO Attn: John Frost

PLASTICS TESTING DEPARTMENT

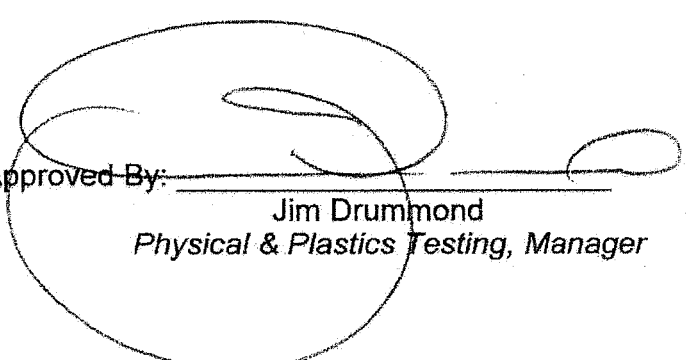
Prepared For:

John Frost
Environmental Geo-Technologies, LLC
28470 Citrin Drive
Romulus, MI 48174

Prepared By:


Melissa Martin
Sr. Project Technician

Approved By:


Jim Drummond
Physical & Plastics Testing, Manager



An A2LA ISO 17025 Accredited Testing Laboratory — Certificate Numbers 255.01 & 255.02
ISO 9001:2008 Registered

ISO 9001:2008
Registered

*Certificate Numbers 255.01 & 255.02

Letters and reports are for the exclusive use of the clients to whom they are addressed and shall not be reproduced, except in full, without the written permission of Akron Rubber Development Laboratory, Inc. (ARDL). The information contained herein applies to the specific material, products or processes tested or evaluated. No warranty of any kind is herein construed or implied. The liability of ARDL, Inc. shall be limited to the amount of consideration paid for services. ARDL, Inc. is ISO 17025 accredited by A2LA for the test methods listed on the attached scope.

www.ardl.com

2887 Gilchrist Rd. | Akron, Ohio 44305 | answers@ardl.com
Toll Free (800) 830-ARDL | Worldwide (330) 794-6600 | Fax (330) 794-6610

October 2, 2014

John Frost
Environmental Geo-Technologies, LLC

Page 2 of 2
PN118325

SUBJECT: Barcol Hardness on one material.
PO# Attn; John Frost

RECEIVED: One small section identified as; Fiberglass Coupon.

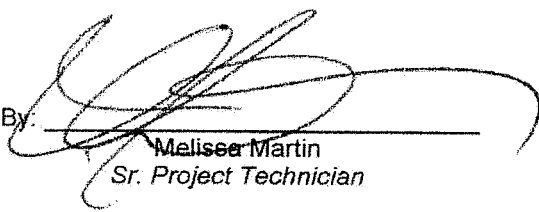
BARCOL HARDNESS ASTM D 2583-13a

Results

Barcol Hardness, Instant

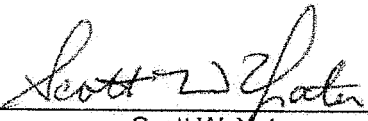
97

Prepared By:


Melisse Martin
Sr. Project Technician

sf

Approved By:


Scott W. Yates
Plastics Testing Assistant Manager

www.ardl.com

2887 Gilchrist Rd. | Akron, Ohio 44305 | answers@ardl.com
Toll Free (800) 830-ARDL | Worldwide (330) 794-6600 | Fax (330) 794-6610

BARCOL HARDNESS REPORT

Customer: Republic Industrial and Energy Solutions, LLC

Component Tested: Test Coupon

PO Number: 9575553 Job Number: 3415

Calibration: Disc: 43 - 48 Actual Reading: 45

Barcol Readings	1	2	3	Average
Side One:	62	63	58	61
Side Two:	58	60	57	58
Overall Average:				60

Tested By:


(signature)

Gary Nicholson
(print or type name)

Date: 01/12/2021

BARCOL HARDNESS REPORT

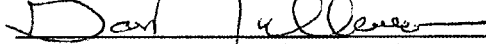
Customer: Republic Industrial and Energy Solutions, LLC

Component Tested: Test Coupon

PO Number: 10159792 Job Number: 3556

Calibration: Disc: 43 - 48 Actual Reading: 45

Barcol Readings	1	2	3	Average
Side One:	56	60	60	59
Side Two:	60	62	62	61
Overall Average:				60

Tested By: 
(signature)

Gary Nicholson
(print or type name)

Date: 10/11/2021

CORROSION MONITORING COUPONS VISUAL DESCRIPTION

October 2021

Fiberglass Coupon

The coupon is dark orange (rust) in color with a semi-smooth texture on both sides. Its cut edges appear sanded. The coupon is free of cracks, pitting, swelling, blemishes, and corrosion. There is no obvious effect on this coupon since reported last.

Hastelloy Coupon

This coupon is identified as C276 with Serial Number 5. The coupon is silver in color with a lightly sandblasted texture. There is no pits, cracks, or blemishes. There is no effect to this coupon.

Stainless Steel Coupon

This coupon is identified as 316L serial number C1563. The coupon is silver with signs of an oxide layer. There has been no apparent change to this coupon. Slight pitting is visible throughout coupon. There has been a significant volume of pumping to both Well #1 and Well #2. The coupon has been exposed to hazardous waste and has shown signs of corrosion.

MAINTENANCE

UIC Monthly Maintenance Log

9/1/2021	Well 1&2	Troubleshoot annulus pressure gages
9/20/2021	Well 1&2	New circlechart recorder was installed for well 2
9/29/2021	Well 1&2	Troubleshoot Flow meters

INJECTION FINGERPRINTS

FINGERPRINT FORM

REPUBLIC INDUSTRIAL AND ENERGY SOLUTIONS, LLC

RECEIVING & APPROVAL FORM

RECEIVING INFORMATION	
Date	9-2-21
Receiving ID#	1090221-01
Manifest #	Line
Land Ban Cert included	Yes No
EGT Approval #	
Generator	
Client	
Transporter	
Time in	
Time out	
Received by	J.72
Sampled by	TG

LAB INFORMATION	
Compatible? (RT#)	
PCBs (ppm) (Oily Waste Only)?	
TOC ppm (CC Waste Only)?	
Flash Point (F)	>140
pH (S.U.)	5.72
Cyanides? (mg/L)	
Sulfides? (ppm)?	
Specific Gravity	1.02
Physical Description	
Stream Consistency	Yes No
Oil in Sample?	Yes No
Temperature (F)	71.7
Conductivity	22.2 mS
% Solids	2.11
Turbidity	Yes No
Color	
TSS (%)	<0.1
Radiation Screen (as needed)	
Lab Signature/Initials	J.72

FINGERPRINT FORM

REPUBLIC INDUSTRIAL AND ENERGY SOLUTIONS, LLC

RECEIVING & APPROVAL FORM

RECEIVING INFORMATION	
Date	9-3-21
Receiving ID#	109032101
Manifest #	Line
Land Ban Cert included	Yes No
EGT Approval #	
Generator	
Client	
Transporter	
Time in	
Time out	
Received by	J.T.
Sampled by	J.T.

LAB INFORMATION	
Compatible? (RT#)	
PCBs (ppm) (Oily Waste Only)?	
TOC ppm (CC Waste Only)?	
Flash Point (F)	>140
pH (S.U.)	5.63
Cyanides? (mg/L)	
Sulfides? (ppm)?	
Specific Gravity	1.04
Physical Description	
Stream Consistency	Yes No
Oil in Sample?	Yes No
Temperature (F)	70.5
Conductivity	
% Solids	3.99
Turbidity	Yes No
Color	
TSS (%)	<0.1
Radiation Screen (as needed)	
Lab Signature/Initials	J.T.

FINGERPRINT FORM

REPUBLIC INDUSTRIAL AND ENERGY SOLUTIONS, LLC

RECEIVING & APPROVAL FORM

RECEIVING INFORMATION	
Date	9.3.21
Receiving ID#	109032102
Manifest #	Line
Land Ban Cert included	Yes No
EGT Approval #	
Generator	
Client	
Transporter	
Time in	
Time out	
Received by	JH
Sampled by	AW

LAB INFORMATION	
Compatible? (RT#)	
PCBs (ppm) (Oily Waste Only)?	
TOC ppm (CC Waste Only)?	
Flash Point (F)	140
pH (S.U.)	6.38
Cyanides? (mg/L)	
Sulfides? (ppm)?	
Specific Gravity	1.03
Physical Description	
Stream Consistency	Yes No
Oil in Sample?	Yes No
Temperature (F)	76.7
Conductivity	50.2 mS
% Solids	3.56
Turbidity	Yes No
Color	
TSS (%)	20.1
Radiation Screen (as needed)	
Lab Signature/Initials	JH

FINGERPRINT FORM

REPUBLIC INDUSTRIAL AND ENERGY SOLUTIONS, LLC

RECEIVING & APPROVAL FORM

RECEIVING INFORMATION	
Date	9-7-21
Receiving ID#	±09072101
Manifest #	Line
Land Ban Cert included	Yes No
EGT Approval #	
Generator	
Client	
Transporter	
Time in	
Time out	
Received by	J.N
Sampled by	JB

LAB INFORMATION	
Compatible? (RT#)	
PCBs (ppm) (Oily Waste Only)?	
TOC ppm (CC Waste Only)?	
Flash Point (F)	2140
pH (S.U.)	6.52
Cyanides? (mg/L)	
Sulfides? (ppm)?	
Specific Gravity	1.02
Physical Description	
Stream Consistency	Yes No
Oil in Sample?	Yes No
Temperature (F)	71.3
Conductivity	45.0 mS
% Solids	3.84
Turbidity	Yes No
Color	
TSS (%)	<0.1
Radiation Screen (as needed)	
Lab Signature/Initials	J.N

FINGERPRINT FORM

REPUBLIC INDUSTRIAL AND ENERGY SOLUTIONS, LLC

RECEIVING & APPROVAL FORM

RECEIVING INFORMATION	
Date	9-7-21
Receiving ID#	1091072102
Manifest #	Line
Land Ban Cert included	Yes No
EGT Approval #	
Generator	
Client	
Transporter	
Time in	
Time out	
Received by	J. A
Sampled by	DM

LAB INFORMATION	
Compatible? (RT#)	
PCBs (ppm) (Oily Waste Only)?	
TOC ppm (CC Waste Only)?	
Flash Point (F)	>140
pH (S.U.)	12.62
Cyanides? (mg/L)	
Sulfides? (ppm)?	
Specific Gravity	1.02
Physical Description	
Stream Consistency	Yes No
Oil in Sample?	Yes No
Temperature (F)	70.9
Conductivity	45.5ms
% Solids	4.04
Turbidity	Yes No
Color	
TSS (%)	<0.1
Radiation Screen (as needed)	
Lab Signature/Initials	J. A

RECEIVING & APPROVAL FORM

RECEIVING INFORMATION	
Date	9-7-21
Receiving ID#	209072103
Manifest #	Line
Land Ban Cert included	Yes No
EGT Approval #	
Generator	
Client	
Transporter	
Time in	
Time out	
Received by	J.H.
Sampled by	DM

LAB INFORMATION	
Compatible? (RT#)	
PCBs (ppm) (Oily Waste Only)?	
TOC ppm (CC Waste Only)?	
Flash Point (F)	>140
pH (S.U.)	6.61
Cyanides? (mg/L)	
Sulfides? (ppm)?	
Specific Gravity	1.02
Physical Description	
Stream Consistency	Yes No
Oil in Sample?	Yes No
Temperature (F)	70.7
Conductivity	45.2 mS
% Solids	4.34
Turbidity	Yes No
Color	
TSS (%)	<0.1
Radiation Screen (as needed)	
Lab Signature/Initials	J.H.

RECEIVING & APPROVAL FORM

RECEIVING INFORMATION	
Date	9-7-21
Receiving ID#	109072104
Manifest #	Line
Land Ban Cert included	Yes No
EGT Approval #	
Generator	
Client	
Transporter	
Time in	
Time out	
Received by	JH
Sampled by	AW

LAB INFORMATION	
Compatible? (RT#)	
PCBs (ppm) (Oily Waste Only)?	
TOC ppm (CC Waste Only)?	
Flash Point (F)	> 140
pH (S.U.)	6.55
Cyanides? (mg/L)	
Sulfides? (ppm)?	
Specific Gravity	1.02
Physical Description	
Stream Consistency	Yes No
Oil in Sample?	Yes No
Temperature (F)	70.8
Conductivity	44.2ms
% Solids	3.90
Turbidity	Yes No
Color	
TSS (%)	< 0.1
Radiation Screen (as needed)	
Lab Signature/Initials	J.N.

RECEIVING & APPROVAL FORM

RECEIVING INFORMATION	
Date	9.7.21
Receiving ID#	I09072105
Manifest #	Line
Land Ban Cert included	Yes No
EGT Approval #	
Generator	
Client	
Transporter	
Time in	
Time out	
Received by	J.A
Sampled by	R.W

LAB INFORMATION	
Compatible? (RT#)	
PCBs (ppm) (Oily Waste Only)?	
TOC ppm (CC Waste Only)?	
Flash Point (F)	> 140
pH (S.U.)	6.54
Cyanides? (mg/L)	
Sulfides? (ppm)?	
Specific Gravity	1.02
Physical Description	
Stream Consistency	Yes No
Oil in Sample?	Yes No
Temperature (F)	70.8
Conductivity	44.7ms
% Solids	4.19
Turbidity	Yes No
Color	
TSS (%)	< 0.1
Radiation Screen (as needed)	
Lab Signature/Initials	J.A

RECEIVING & APPROVAL FORM

RECEIVING INFORMATION	
Date	9.8.21
Receiving ID#	209082101
Manifest #	Line
Land Ban Cert included	Yes No
EGT Approval #	
Generator	
Client	
Transporter	
Time in	
Time out	
Received by	J.T.
Sampled by	AW

LAB TEST INFORMATION	
Compatible? (RT#)	
PCBs (ppm) (Oily Waste Only)?	
TOC ppm (CC Waste Only)?	
Flash Point (F)	2140
pH (S.U.)	6.55
Cyanides? (mg/L)	
Sulfides? (ppm)?	
Specific Gravity	1.02
Physical Description	
Stream Consistency	Yes No
Oil in Sample?	Yes No
Temperature (F)	76.8
Conductivity	44.6 μ ms
% Solids	3.78
Turbidity	Yes No
Color	
TSS (%)	20.1
Radiation Screen (as needed)	
Lab Signature/Initials	J.T.

RECEIVING & APPROVAL FORM

RECEIVING INFORMATION	
Date	9-8-21
Receiving ID#	109082102
Manifest #	Line
Land Ban Cert included	Yes No
EGT Approval #	
Generator	
Client	
Transporter	
Time in	
Time out	
Received by	J.T.
Sampled by	J.T.

LAB INFORMATION	
Compatible? (RT#)	Y
PCBs (ppm) (Oily Waste Only)?	
TOC ppm (CC Waste Only)?	
Flash Point (F)	> 140
pH (S.U.)	6.61
Cyanides? (mg/L)	
Sulfides? (ppm)?	
Specific Gravity	1.02
Physical Description	
Stream Consistency	Yes No
Oil in Sample?	Yes No
Temperature (F)	70.1
Conductivity	43.2 mS
% Solids	3.70
Turbidity	Yes No
Color	
TSS (%)	< 0.1
Radiation Screen (as needed)	
Lab Signature/Initials	J.T.

RECEIVING & APPROVAL FORM

RECEIVING INFORMATION	
Date	9-8-21
Receiving ID#	109082103
Manifest #	Line
Land Ban Cert included	Yes No
EGT Approval #	
Generator	
Client	
Transporter	
Time in	
Time out	
Received by	J.M.
Sampled by	J.M.

LAB INFORMATION	
Compatible? (RT#)	
PCBs (ppm) (Oily Waste Only)?	
TOC ppm (CC Waste Only)?	
Flash Point (F)	> 140
pH (S.U.)	7.02
Cyanides? (mg/L)	
Sulfides? (ppm)?	
Specific Gravity	1.02
Physical Description	
Stream Consistency	Yes No
Oil in Sample?	Yes No
Temperature (F)	69.9
Conductivity	389.5
% Solids	3.17
Turbidity	Yes No
Color	
TSS (%)	< 0.1
Radiation Screen (as needed)	
Lab Signature/Initials	J.M.

RECEIVING & APPROVAL FORM

RECEIVING INFORMATION	
Date	9.8.21
Receiving ID#	109082104
Manifest #	Line
Land Ban Cert included	Yes No
EGT Approval #	
Generator	
Client	
Transporter	
Time in	
Time out	
Received by	J.T.
Sampled by	AW

LAB INFORMATION	
Compatible? (RT#)	
PCBs (ppm) (Oily Waste Only)?	
TOC ppm (CC Waste Only)?	
Flash Point (F)	> 140
pH (S.U.)	6.95
Cyanides? (mg/L)	
Sulfides? (ppm)?	
Specific Gravity	1.02
Physical Description	
Stream Consistency	Yes No
Oil in Sample?	Yes No
Temperature (F)	69.9
Conductivity	33.0 mS
% Solids	2.59
Turbidity	Yes No
Color	
TSS (%)	< 0.1
Radiation Screen (as needed)	
Lab Signature/Initials	J.T.

RECEIVING & APPROVAL FORM

RECEIVING INFORMATION	
Date	9.9.21
Receiving ID#	109092101
Manifest #	Line
Land Ban Cert included	Yes No
EGT Approval #	
Generator	
Client	
Transporter	
Time in	
Time out	
Received by	J.H.
Sampled by	AW

LAB INFORMATION	
Compatible? (RT#)	
PCBs (ppm) (Oily Waste Only)?	
TOC ppm (CC Waste Only)?	
Flash Point (F)	>140
pH (S.U.)	6.67
Cyanides? (mg/L)	
Sulfides? (ppm)?	
Specific Gravity	1.02
Physical Description	
Stream Consistency	Yes No
Oil in Sample?	Yes No
Temperature (F)	70.0
Conductivity	31.9ms
% Solids	2.17
Turbidity	Yes No
Color	
TSS (%)	<0.1
Radiation Screen (as needed)	
Lab Signature/Initials	J.H.

RECEIVING & APPROVAL FORM

RECEIVING INFORMATION	
Date	09-09-21
Receiving ID#	I09092102- SST2
Manifest #	Line
Land Ban Cert included	Yes No
EGT Approval #	
Generator	
Client	
Transporter	
Time in	
Time out	
Received by	J. J.
Sampled by	MA

LAB INFORMATION	
Compatible? (RT#)	
PCBs (ppm) (Oily Waste Only)?	
TOC ppm (CC Waste Only)?	
Flash Point (F)	> 140
pH (S.U.)	6.41 (6.70)
Cyanides? (mg/L)	
Sulfides? (ppm)?	
Specific Gravity	1.02
Physical Description	
Stream Consistency	Yes No
Oil in Sample?	Yes No
Temperature (F)	69.6
Conductivity	31.7 mS
% Solids	2.55
Turbidity	Yes No
Color	
TSS (%)	< 0.1
Radiation Screen (as needed)	
Lab Signature/Initials	J. J.

RECEIVING & APPROVAL FORM

RECEIVING INFORMATION	
Date	9-9-21
Receiving ID#	109092103
Manifest #	Line
Land Ban Cert included	Yes No
EGT Approval #	
Generator	
Client	
Transporter	
Time in	
Time out	
Received by	J.N.
Sampled by	DM

SST1

LAB INFORMATION	
Compatible? (RT#)	
PCBs (ppm) (Oily Waste Only)?	
TOC ppm (CC Waste Only)?	
Flash Point (F)	> 140
pH (S.U.)	5.45
Cyanides? (mg/L)	
Sulfides? (ppm)?	
Specific Gravity	1.07
Physical Description	
Stream Consistency	Yes No
Oil in Sample?	Yes No
Temperature (F)	69.4
Conductivity	64.7 mS
% Solids	8.6
Turbidity	Yes No
Color	
TSS (%)	(0.1)
Radiation Screen (as needed)	
Lab Signature/Initials	J.N.

FINGERPRINT FORM

REPUBLIC INDUSTRIAL AND ENERGY SOLUTIONS, LLC

RECEIVING & APPROVAL FORM

RECEIVING INFORMATION	
Date	9.2.21
Receiving ID#	109 09 2103
Manifest #	Line
Land Ban Cert included	Yes No
EGT Approval #	
Generator	
Client	
Transporter	
Time in	
Time out	
Received by	J.H.
Sampled by	AW

SST-2

LAB INFORMATION	
Compatible? (RT#)	
PCBs (ppm) (Oily Waste Only)?	
TOC ppm (CC Waste Only)?	
Flash Point (F)	>140
pH (S.U.)	6.56
Cyanides? (mg/L)	7
Sulfides? (ppm)?	
Specific Gravity	1.02
Physical Description	
Stream Consistency	Yes No
Oil in Sample?	Yes No
Temperature (F)	69.3
Conductivity	30.2 mS
% Solids	1.81
Turbidity	Yes No
Color	
TSS (%)	<0.1
Radiation Screen (as needed)	
Lab Signature/Initials	J.H.

RECEIVING & APPROVAL FORM

RECEIVING INFORMATION	
Date	9-9-21
Receiving ID#	109 09 21 04
Manifest #	Line
Land Ban Cert included	Yes No
EGT Approval #	
Generator	
Client	
Transporter	
Time in	
Time out	
Received by	J.A.
Sampled by	AW

SST-1

LAB INFORMATION	
Compatible? (RT#)	
PCBs (ppm) (Oily Waste Only)?	
TOC ppm (CC Waste Only)?	
Flash Point (F)	> 140
pH (S.U.)	4.23
Cyanides? (mg/L)	
Sulfides? (ppm)?	
Specific Gravity	1.15
Physical Description	
Stream Consistency	Yes No
Oil in Sample?	Yes No
Temperature (F)	69.4
Conductivity	90.9 mS
% Solids	17.82
Turbidity	Yes No
Color	
TSS (%)	< 0.1
Radiation Screen (as needed)	
Lab Signature/Initials	J.A.

RECEIVING & APPROVAL FORM

RECEIVING INFORMATION	
Date	9.9.21
Receiving ID#	109092105
Manifest #	Line
Land Ban Cert included	Yes No
EGT Approval #	
Generator	
Client	
Transporter	
Time in	
Time out	
Received by	S.H.
Sampled by	AW

LAB INFORMATION	
Compatible? (RT#)	
PCBs (ppm) (Oily Waste Only)?	
TOC ppm (CC Waste Only)?	
Flash Point (F)	7140
pH (S.U.)	6.52
Cyanides? (mg/L)	
Sulfides? (ppm)?	
Specific Gravity	1.01
Physical Description	
Stream Consistency	Yes No
Oil in Sample?	Yes No
Temperature (F)	69.6
Conductivity	26.6 mS
% Solids	1.81
Turbidity	Yes No
Color	
TSS (%)	<0.1
Radiation Screen (as needed)	
Lab Signature/Initials	J.H.

RECEIVING & APPROVAL FORM

RECEIVING INFORMATION	
Date	9-10-21
Receiving ID#	709 109102101
Manifest #	Line
Land Ban Cert included	Yes No
EGT Approval #	
Generator	
Client	
Transporter	
Time in	
Time out	
Received by	JH
Sampled by	AW

LAB INFORMATION	
Compatible? (RT#)	
PCBs (ppm) (Oily Waste Only)?	
TOC ppm (CC Waste Only)?	
Flash Point (F)	7140
pH (S.U.)	6.55
Cyanides? (mg/L)	
Sulfides? (ppm)?	
Specific Gravity	1.01
Physical Description	
Stream Consistency	Yes No
Oil in Sample?	Yes No
Temperature (F)	69.4
Conductivity	29.0ms
% Solids	1.94
Turbidity	Yes No
Color	
TSS (%)	<0.1
Radiation Screen (as needed)	
Lab Signature/Initials	JH

RECEIVING & APPROVAL FORM

RECEIVING INFORMATION	
Date	9-10-21
Receiving ID#	IO9102102
Manifest #	Line
Land Ban Cert included	Yes No
EGT Approval #	
Generator	
Client	
Transporter	
Time in	
Time out	
Received by	J. J.
Sampled by	J. J.

LAB INFORMATION	
Compatible? (RT#)	
PCBs (ppm) (Oily Waste Only)?	
TOC ppm (CC Waste Only)?	
Flash Point (F)	> 140
pH (S.U.)	6.58
Cyanides? (mg/L)	
Sulfides? (ppm)?	
Specific Gravity	1.01
Physical Description	
Stream Consistency	Yes No
Oil in Sample?	Yes No
Temperature (F)	70.8
Conductivity	29.0 - 5
% Solids	1.84
Turbidity	Yes No
Color	
TSS (%)	< 0.1
Radiation Screen (as needed)	
Lab Signature/Initials	J. J.

FINGERPRINT FORM

REPUBLIC INDUSTRIAL AND ENERGY SOLUTIONS, LLC

RECEIVING & APPROVAL FORM

RECEIVING INFORMATION	
Date	9-10-21
Receiving ID#	1091021 03
Manifest #	Line
Land Ban Cert included	Yes No
EGT Approval #	
Generator	
Client	
Transporter	
Time in	
Time out	
Received by	S.T.
Sampled by	AW

LAB INFORMATION	
Compatible? (RT#)	
PCBs (ppm) (Oily Waste Only)?	
TOC ppm (CC Waste Only)?	
Flash Point (F)	140
pH (S.U.)	5.5
Cyanides? (mg/L)	
Sulfides? (ppm)?	
Specific Gravity	1.01
Physical Description	
Stream Consistency	Yes No
Oil in Sample?	Yes No
Temperature (F)	70.2
Conductivity	29.2 mS
% Solids	2.38
Turbidity	Yes No
Color	
TSS (%)	<0.1
Radiation Screen (as needed)	
Lab Signature/Initials	J.H.

FINGERPRINT FORM

REPUBLIC INDUSTRIAL AND ENERGY SOLUTIONS, LLC

RECEIVING & APPROVAL FORM

RECEIVING INFORMATION	
Date	9-10-21
Receiving ID#	209102104
Manifest #	Line
Land Ban Cert included	Yes No
EGT Approval #	
Generator	
Client	
Transporter	
Time in	
Time out	
Received by	J.J.
Sampled by	AW

LAB INFORMATION	
Compatible? (RT#)	
PCBs (ppm) (Oily Waste Only)?	
TOC ppm (CC Waste Only)?	
Flash Point (F)	> 140
pH (S.U.)	6.52
Cyanides? (mg/L)	
Sulfides? (ppm)?	
Specific Gravity	1.01
Physical Description	
Stream Consistency	Yes No
Oil in Sample?	Yes No
Temperature (F)	70.3
Conductivity	26.2
% Solids	1.79
Turbidity	Yes No
Color	
TSS (%)	< 0.1
Radiation Screen (as needed)	
Lab Signature/Initials	J.J.

FINGERPRINT FORM

REPUBLIC INDUSTRIAL AND ENERGY SOLUTIONS, LLC

RECEIVING & APPROVAL FORM

RECEIVING INFORMATION	
Date	9-13-21
Receiving ID#	209132101
Manifest #	Line
Land Ban Cert included	Yes No
EGT Approval #	
Generator	
Client	
Transporter	
Time in	
Time out	
Received by	JH) FG J.R
Sampled by	TG

LAB INFORMATION	
Compatible? (RT#)	
PCBs (ppm) (Oily Waste Only)?	
TOC ppm (CC Waste Only)?	
Flash Point (F)	>140
pH (S.U.)	12.54
Cyanides? (mg/L)	
Sulfides? (ppm)?	
Specific Gravity	1.01
Physical Description	
Stream Consistency	Yes No
Oil in Sample?	Yes No
Temperature (F)	70.4
Conductivity	25.7 mS
% Solids	2.29
Turbidity	Yes No
Color	
TSS (%)	20.1
Radiation Screen (as needed)	
Lab Signature/Initials	J.S.

RECEIVING & APPROVAL FORM

RECEIVING INFORMATION	
Date	9-13-21
Receiving ID#	109132102
Manifest #	Line
Land Ban Cert included	Yes No
EGT Approval #	
Generator	
Client	
Transporter	
Time in	
Time out	
Received by	JH
Sampled by	JH

LAB INFORMATION	
Compatible? (RT#)	Y
PCBs (ppm) (Oily Waste Only)?	
TOC ppm (CC Waste Only)?	
Flash Point (F)	>140
pH (S.U.)	6.54
Cyanides? (mg/L)	
Sulfides? (ppm)?	
Specific Gravity	1.02
Physical Description	
Stream Consistency	Yes No
Oil in Sample?	Yes No
Temperature (F)	70.8
Conductivity	24.8-5
% Solids	1.70
Turbidity	Yes No
Color	
TSS (%)	<0.1
Radiation Screen (as needed)	
Lab Signature/Initials	JH

RECEIVING & APPROVAL FORM

RECEIVING INFORMATION	
Date	9-13-21
Receiving ID#	109132103
Manifest #	Line
Land Ban Cert included	Yes No
EGT Approval #	
Generator	
Client	
Transporter	
Time in	
Time out	
Received by	J.H.
Sampled by	AW

LAB INFORMATION	
Compatible? (RT#)	
PCBs (ppm) (Oily Waste Only)?	
TOC ppm (CC Waste Only)?	
Flash Point (F)	140
pH (S.U.)	6.48
Cyanides? (mg/L)	
Sulfides? (ppm)?	
Specific Gravity	1.02
Physical Description	
Stream Consistency	Yes No
Oil in Sample?	Yes No
Temperature (F)	76.7
Conductivity	28.5 mS
% Solids	2.02
Turbidity	Yes No
Color	
TSS (%)	<0.1
Radiation Screen (as needed)	
Lab Signature/Initials	J.H.

FINGERPRINT FORM

REPUBLIC INDUSTRIAL AND ENERGY SOLUTIONS, LLC

RECEIVING & APPROVAL FORM

RECEIVING INFORMATION	
Date	9.13.21
Receiving ID#	109132104
Manifest #	Line
Land Ban Cert included	Yes No
EGT Approval #	
Generator	
Client	
Transporter	
Time in	
Time out	
Received by	J.H.
Sampled by	AW

LAB INFORMATION	
Compatible? (RT#)	
PCBs (ppm) (Oily Waste Only)?	
TOC ppm (CC Waste Only)?	
Flash Point (F)	>140
pH (S.U.)	6.54
Cyanides? (mg/L)	
Sulfides? (ppm)?	
Specific Gravity	1.01
Physical Description	
Stream Consistency	Yes No
Oil in Sample?	Yes No
Temperature (F)	70.7
Conductivity	28.1 mS
% Solids	2.32
Turbidity	Yes No
Color	
TSS (%)	<0.1
Radiation Screen (as needed)	
Lab Signature/Initials	J.H.

FINGERPRINT FORM

REPUBLIC INDUSTRIAL AND ENERGY SOLUTIONS, LLC

RECEIVING & APPROVAL FORM

RECEIVING INFORMATION	
Date	9-11-21
Receiving ID#	109142101
Manifest #	Line
Land Ban Cert included	Yes No
EGT Approval #	
Generator	
Client	
Transporter	
Time in	
Time out	
Received by	J.F.
Sampled by	AW

LAB INFORMATION	
Compatible? (RT#)	
PCBs (ppm) (Oily Waste Only)?	
TOC ppm (CC Waste Only)?	
Flash Point (F)	>140
pH (S.U.)	6.54
Cyanides? (mg/L)	
Sulfides? (ppm)?	1.01 J.F.
Specific Gravity	1.01
Physical Description	
Stream Consistency	Yes No
Oil in Sample?	Yes No
Temperature (F)	70.8
Conductivity	28.9 mS
% Solids	2.27
Turbidity	Yes No
Color	
TSS (%)	<0.1
Radiation Screen (as needed)	
Lab Signature/Initials	J.F.

FINGERPRINT FORM

REPUBLIC INDUSTRIAL AND ENERGY SOLUTIONS, LLC

RECEIVING & APPROVAL FORM

RECEIVING INFORMATION	
Date	9-14-21
Receiving ID#	509142102
Manifest #	Line
Land Ban Cert included	Yes No
EGT Approval #	
Generator	
Client	
Transporter	
Time in	
Time out	
Received by	J. J.
Sampled by	J.

LAB INFORMATION	
Compatible? (RT#)	Y
PCBs (ppm) (Oily Waste Only)?	
TOC ppm (CC Waste Only)?	
Flash Point (F)	57) -100 > 140
pH (S.U.)	6.61
Cyanides? (mg/L)	
Sulfides? (ppm)?	
Specific Gravity	1.02
Physical Description	
Stream Consistency	Yes No
Oil in Sample?	Yes No
Temperature (F)	70.4
Conductivity	29.8m
% Solids	1.91
Turbidity	Yes No
Color	
TSS (%)	20.1
Radiation Screen (as needed)	
Lab Signature/Initials	J. J.

FINGERPRINT FORM

REPUBLIC INDUSTRIAL AND ENERGY SOLUTIONS, LLC

RECEIVING & APPROVAL FORM

RECEIVING INFORMATION	
Date	9/14/21
Receiving ID#	109142103
Manifest #	Line
Land Ban Cert included	Yes No
EGT Approval #	
Generator	
Client	
Transporter	
Time in	
Time out	
Received by	BO
Sampled by	FW

LAB INFORMATION	
Compatible? (RT#)	
PCBs (ppm) (Oily Waste Only)?	
TOC ppm (CC Waste Only)?	
Flash Point (F)	>140
pH (S.U.)	5.73
Cyanides? (mg/L)	
Sulfides? (ppm)?	
Specific Gravity	1.02
Physical Description	
Stream Consistency	Yes No
Oil in Sample?	Yes No
Temperature (F)	70.9
Conductivity	373 mS
% Solids	4.18
Turbidity	Yes No
Color	
TSS (%)	<0.1
Radiation Screen (as needed)	
Lab Signature/Initials	B.O.

RECEIVING & APPROVAL FORM

RECEIVING INFORMATION	
Date	9-15-21
Receiving ID#	209152101
Manifest #	Line
Land Ban Cert included	Yes No
EGT Approval #	
Generator	
Client	
Transporter	
Time in	
Time out	
Received by	J.T.
Sampled by	DM

LAB INFORMATION	
Compatible? (RT#)	
PCBs (ppm) (Oily Waste Only)?	
TOC ppm (CC Waste Only)?	
Flash Point (F)	> 140
pH (S.U.)	6.64
Cyanides? (mg/L)	
Sulfides? (ppm)?	
Specific Gravity	1.02
Physical Description	
Stream Consistency	Yes No
Oil in Sample?	Yes No
Temperature (F)	72.3
Conductivity	31.0 mS
% Solids	1.84
Turbidity	Yes No
Color	
TSS (%)	< 0.1
Radiation Screen (as needed)	
Lab Signature/Initials	J.T.

RECEIVING & APPROVAL FORM

RECEIVING INFORMATION	
Date	9-15-21
Receiving ID#	109152102
Manifest #	Line
Land Ban Cert included	Yes No
EGT Approval #	
Generator	
Client	
Transporter	
Time in	
Time out	
Received by	J.H.
Sampled by	AW

LAB INFORMATION	
Compatible? (RT#)	
PCBs (ppm) (Oily Waste Only)?	
TOC ppm (CC Waste Only)?	
Flash Point (F)	> 140
pH (S.U.)	6.62
Cyanides? (mg/L)	
Sulfides? (ppm)?	
Specific Gravity	1.01
Physical Description	
Stream Consistency	Yes No
Oil in Sample?	Yes No
Temperature (F)	71.2
Conductivity	29.8 mS
% Solids	1.65
Turbidity	Yes No
Color	
TSS (%)	< 0.1
Radiation Screen (as needed)	
Lab Signature/Initials	J.H.

RECEIVING & APPROVAL FORM

RECEIVING INFORMATION	
Date	9-16-21
Receiving ID#	I 09162151
Manifest #	Line
Land Ban Cert included	Yes No
EGT Approval #	
Generator	
Client	
Transporter	
Time in	
Time out	
Received by	J.H.
Sampled by	BO

LAB INFORMATION	
Compatible? (RT#)	
PCBs (ppm) (Oily Waste Only)?	
TOC ppm (CC Waste Only)?	
Flash Point (F)	2140
pH (S.U.)	6.47
Cyanides? (mg/L)	
Sulfides? (ppm)?	
Specific Gravity	1.02
Physical Description	
Stream Consistency	Yes No
Oil in Sample?	Yes No
Temperature (F)	71.6
Conductivity	28.3 mS
% Solids	1.83
Turbidity	Yes No
Color	
TSS (%)	<0.1
Radiation Screen (as needed)	
Lab Signature/Initials	J.H.

FINGERPRINT FORM

REPUBLIC INDUSTRIAL AND ENERGY SOLUTIONS, LLC

RECEIVING & APPROVAL FORM

RECEIVING INFORMATION	
Date	9-16-21
Receiving ID#	109162102
Manifest #	Line
Land Ban Cert included	Yes No
EGT Approval #	
Generator	
Client	
Transporter	
Time in	
Time out	
Received by	J.T.
Sampled by	J.T.

LAB INFORMATION	
Compatible? (RT#)	Y
PCBs (ppm) (Oily Waste Only)?	
TOC ppm (CC Waste Only)?	
Flash Point (F)	2140
pH (S.U.)	6.60
Cyanides? (mg/L)	
Sulfides? (ppm)?	
Specific Gravity	1.01
Physical Description	
Stream Consistency	Yes No
Oil in Sample?	Yes No
Temperature (F)	73.2
Conductivity	25.2 mS
% Solids	1.50
Turbidity	Yes No
Color	
TSS (%)	<0.1
Radiation Screen (as needed)	
Lab Signature/Initials	J.T.

FINGERPRINT FORM

REPUBLIC INDUSTRIAL AND ENERGY SOLUTIONS, LLC

RECEIVING & APPROVAL FORM

RECEIVING INFORMATION	
Date	9-16-21
Receiving ID#	109162103
Manifest #	Line
Land Ban Cert included	Yes No
EGT Approval #	
Generator	
Client	
Transporter	
Time in	
Time out	
Received by	J.H.
Sampled by	DB

ST-2

LAB INFORMATION	
Compatible? (RT#)	
PCBs (ppm) (Oily Waste Only)?	
TOC ppm (CC Waste Only)?	
Flash Point (F)	> 140
pH (S.U.)	6.61
Cyanides? (mg/L)	
Sulfides? (ppm)?	
Specific Gravity	1.02
Physical Description	
Stream Consistency	Yes No
Oil in Sample?	Yes No
Temperature (F)	70.4
Conductivity	34.4 mS
% Solids	2.46
Turbidity	Yes No
Color	
TSS (%)	< 0.1
Radiation Screen (as needed)	
Lab Signature/Initials	J.H.

FINGERPRINT FORM

REPUBLIC INDUSTRIAL AND ENERGY SOLUTIONS, LLC

RECEIVING & APPROVAL FORM

RECEIVING INFORMATION	
Date	9-16-21
Receiving ID#	I09162104
Manifest #	Line
Land Ban Cert included	Yes No
EGT Approval #	
Generator	
Client	
Transporter	
Time in	
Time out	
Received by	J.M. TG
Sampled by	TG

ST-1

J.M.

LAB INFORMATION	
Compatible? (RT#)	
PCBs (ppm) (Oily Waste Only)?	
TOC ppm (CC Waste Only)?	
Flash Point (F)	>140
pH (S.U.)	6.47
Cyanides? (mg/L)	
Sulfides? (ppm)?	
Specific Gravity	1.01
Physical Description	
Stream Consistency	Yes No
Oil in Sample?	Yes No
Temperature (F)	70.2
Conductivity	3.01 mS
% Solids	0.39
Turbidity	Yes No
Color	
TSS (%)	40.1
Radiation Screen (as needed)	
Lab Signature/Initials	J.M.

FINGERPRINT FORM

REPUBLIC INDUSTRIAL AND ENERGY SOLUTIONS, LLC

RECEIVING & APPROVAL FORM

RECEIVING INFORMATION	
Date	9-16-21
Receiving ID#	109162104
Manifest #	Line
Land Ban Cert included	Yes No
EGT Approval #	
Generator	
Client	
Transporter	
Time in	
Time out	
Received by	J.H.
Sampled by	AW

SSP-1

LAB INFORMATION	
Compatible? (RT#)	
PCBs (ppm) (Oily Waste Only)?	
TOC ppm (CC Waste Only)?	
Flash Point (F)	>140
pH (S.U.)	6.36
Cyanides? (mg/L)	
Sulfides? (ppm)?	
Specific Gravity	1.01
Physical Description	
Stream Consistency	Yes No
Oil in Sample?	Yes No
Temperature (F)	70.3
Conductivity	19.56
% Solids	1.75
Turbidity	Yes No
Color	
TSS (%)	<0.1
Radiation Screen (as needed)	
Lab Signature/Initials	J.H.

RECEIVING & APPROVAL FORM

RECEIVING INFORMATION	
Date	9.16.21
Receiving ID#	109162104
Manifest #	Line
Land Ban Cert included	Yes No
EGT Approval #	
Generator	
Client	
Transporter	
Time in	
Time out	
Received by	J.T.
Sampled by	AW

SST-2

LAB INFORMATION	
Compatible? (RT#)	
PCBs (ppm) (Oily Waste Only)?	
TOC ppm (CC Waste Only)?	
Flash Point (F)	>140
pH (S.U.)	6.70
Cyanides? (mg/L)	
Sulfides? (ppm)?	
Specific Gravity	1.02
Physical Description	
Stream Consistency	Yes No
Oil in Sample?	Yes No
Temperature (F)	70.2
Conductivity	33.7 mS
% Solids	2.21
Turbidity	Yes No
Color	
TSS (%)	<0.1
Radiation Screen (as needed)	
Lab Signature/Initials	J.T.

FINGERPRINT FORM

REPUBLIC INDUSTRIAL AND ENERGY SOLUTIONS, LLC

RECEIVING & APPROVAL FORM

RECEIVING INFORMATION	
Date	9.16.21
Receiving ID#	102162105
Manifest #	Line
Land Ban Cert included	Yes No
EGT Approval #	
Generator	
Client	
Transporter	
Time in	
Time out	
Received by	J.T.
Sampled by	AW

SS7-1

LAB INFORMATION	
Compatible? (RT#)	
PCBs (ppm) (Oily Waste Only)?	
TOC ppm (CC Waste Only)?	
Flash Point (F)	>140
pH (S.U.)	6.64
Cyanides? (mg/L)	
Sulfides? (ppm)?	
Specific Gravity	1.02
Physical Description	
Stream Consistency	Yes No
Oil in Sample?	Yes No
Temperature (F)	70.3
Conductivity	34.5 mS
% Solids	2.28
Turbidity	Yes No
Color	
TSS (%)	<0.1
Radiation Screen (as needed)	
Lab Signature/Initials	J.T.

FINGERPRINT FORM

REPUBLIC INDUSTRIAL AND ENERGY SOLUTIONS, LLC

RECEIVING & APPROVAL FORM

RECEIVING INFORMATION	
Date	9-16-21
Receiving ID#	I09162105
Manifest #	Line
Land Ban Cert included	Yes No
EGT Approval #	
Generator	
Client	
Transporter	
Time in	
Time out	
Received by	J.N.
Sampled by	AW

SS72

LAB INFORMATION	
Compatible? (RT#)	
PCBs (ppm) (Oily Waste Only)?	
TOC ppm (CC Waste Only)?	
Flash Point (F)	>140
pH (S.U.)	5.99
Cyanides? (mg/L)	
Sulfides? (ppm)?	
Specific Gravity	1.01
Physical Description	
Stream Consistency	Yes No
Oil in Sample?	Yes No
Temperature (F)	70.2
Conductivity	37.6 uS
% Solids	2.86
Turbidity	Yes No
Color	
TSS (%)	<0.1
Radiation Screen (as needed)	
Lab Signature/Initials	J.N.

FINGERPRINT FORM

REPUBLIC INDUSTRIAL AND ENERGY SOLUTIONS, LLC

RECEIVING & APPROVAL FORM

RECEIVING INFORMATION	
Date	9-17-21
Receiving ID#	209172101
Manifest #	Line
Land Ban Cert included	Yes No
EGT Approval #	
Generator	
Client	
Transporter	
Time in	
Time out	
Received by	J.H.
Sampled by	AW

LAB INFORMATION	
Compatible? (RT#)	
PCBs (ppm) (Oily Waste Only)?	
TOC ppm (CC Waste Only)?	
Flash Point (F)	> 140
pH (S.U.)	10.62
Cyanides? (mg/L)	
Sulfides? (ppm)?	
Specific Gravity	1.02
Physical Description	
Stream Consistency	Yes No
Oil in Sample?	Yes No
Temperature (F)	70.2
Conductivity	35.3 mS
% Solids	2.81
Turbidity	Yes No
Color	
TSS (%)	< 0.1
Radiation Screen (as needed)	
Lab Signature/Initials	J.H.

FINGERPRINT FORM

REPUBLIC INDUSTRIAL AND ENERGY SOLUTIONS, LLC

RECEIVING & APPROVAL FORM

RECEIVING INFORMATION	
Date	9-17-21
Receiving ID#	109172103
Manifest #	Line
Land Ban Cert included	Yes No
EGT Approval #	
Generator	
Client	
Transporter	
Time in	
Time out	
Received by	J.N.
Sampled by	J.N.

LAB INFORMATION	
Compatible? (RT#)	Y
PCBs (ppm) (Oily Waste Only)?	
TOC ppm (CC Waste Only)?	
Flash Point (F)	7140
pH (S.U.)	6.72
Cyanides? (mg/L)	
Sulfides? (ppm)?	
Specific Gravity	1.02
Physical Description	
Stream Consistency	Yes No
Oil in Sample?	Yes No
Temperature (F)	70.8
Conductivity	36.2 mS
% Solids	1.89
Turbidity	Yes No
Color	
TSS (%)	<0.1
Radiation Screen (as needed)	
Lab Signature/Initials	J.N.

FINGERPRINT FORM

REPUBLIC INDUSTRIAL AND ENERGY SOLUTIONS, LLC

RECEIVING & APPROVAL FORM

RECEIVING INFORMATION	
Date	9-17-21
Receiving ID#	109172103
Manifest #	Line
Land Ban Cert included	Yes No
EGT Approval #	
Generator	
Client	
Transporter	
Time in	
Time out	
Received by	G.N
Sampled by	ALW

LAB INFORMATION	
Compatible? (RT#)	
PCBs (ppm) (Oily Waste Only)?	
TOC ppm (CC Waste Only)?	
Flash Point (F)	>140
pH (S.U.)	6.63
Cyanides? (mg/L)	
Sulfides? (ppm)?	
Specific Gravity	1.02
Physical Description	
Stream Consistency	Yes No
Oil in Sample?	Yes No
Temperature (F)	70.3
Conductivity	34.4 mS
% Solids	2.80
Turbidity	Yes No
Color	
TSS (%)	<0.1
Radiation Screen (as needed)	
Lab Signature/Initials	G.N

RECEIVING & APPROVAL FORM

RECEIVING INFORMATION	
Date	9-12-21
Receiving ID#	209172104
Manifest #	Line
Land Ban Cert included	Yes No
EGT Approval #	
Generator	
Client	
Transporter	
Time in	
Time out	
Received by	J.T.
Sampled by	AW

LAB INFORMATION	
Compatible? (RT#)	
PCBs (ppm) (Oily Waste Only)?	
TOC ppm (CC Waste Only)?	
Flash Point (F)	>140
pH (S.U.)	6.63
Cyanides? (mg/L)	
Sulfides? (ppm)?	
Specific Gravity	1.02
Physical Description	
Stream Consistency	Yes No
Oil in Sample?	Yes No
Temperature (F)	70.4
Conductivity	33.9
% Solids	1.91
Turbidity	Yes No
Color	
TSS (%)	<0.1
Radiation Screen (as needed)	
Lab Signature/Initials	J.T.

FINGERPRINT FORM

REPUBLIC INDUSTRIAL AND ENERGY SOLUTIONS, LLC

RECEIVING & APPROVAL FORM

RECEIVING INFORMATION	
Date	9-20-21
Receiving ID#	2092121 01
Manifest #	Line
Land Ban Cert included	Yes No
EGT Approval #	
Generator	
Client	
Transporter	
Time in	
Time out	
Received by	
Sampled by	DM

LAB INFORMATION	
Compatible? (RT#)	
PCBs (ppm) (Oily Waste Only)?	
TOC ppm (CC Waste Only)?	
Flash Point (F)	> 140
pH (S.U.)	6.62
Cyanides? (mg/L)	
Sulfides? (ppm)?	
Specific Gravity	1.02
Physical Description	
Stream Consistency	Yes No
Oil in Sample?	Yes No
Temperature (F)	70.5
Conductivity	34.7 mS
% Solids	1.9
Turbidity	Yes No
Color	
TSS (%)	
Radiation Screen (as needed)	< 0.1
Lab Signature/Initials	

FINGERPRINT FORM

REPUBLIC INDUSTRIAL AND ENERGY SOLUTIONS, LLC

RECEIVING & APPROVAL FORM

RECEIVING INFORMATION	
Date	9-20-21
Receiving ID#	109202102
Manifest #	Line
Land Ban Cert included	Yes No
EGT Approval #	
Generator	
Client	
Transporter	
Time in	
Time out	
Received by	J.M.
Sampled by	J.M.

LAB INFORMATION	
Compatible? (RT#)	
PCBs (ppm) (Oily Waste Only)?	
TOC ppm (CC Waste Only)?	
Flash Point (F)	> 140
pH (S.U.)	6.64
Cyanides? (mg/L)	
Sulfides? (ppm)?	
Specific Gravity	1.02
Physical Description	
Stream Consistency	Yes No
Oil in Sample?	Yes No
Temperature (F)	71.3
Conductivity	12.8 ms
% Solids	1.68
Turbidity	Yes No
Color	
TSS (%)	< 0.1
Radiation Screen (as needed)	
Lab Signature/Initials	

FINGERPRINT FORM

REPUBLIC INDUSTRIAL AND ENERGY SOLUTIONS, LLC

RECEIVING & APPROVAL FORM

RECEIVING INFORMATION	
Date	9-20-21
Receiving ID#	B09202103
Manifest #	Line
Land Ban Cert included	Yes No
EGT Approval #	
Generator	
Client	
Transporter	
Time in	
Time out	
Received by	J.H.
Sampled by	Ø

SST-1

LAB INFORMATION	
Compatible? (RT#)	
PCBs (ppm) (Oily Waste Only)?	
TOC ppm (CC Waste Only)?	
Flash Point (F)	> 140
pH (S.U.)	2.07
Cyanides? (mg/L)	
Sulfides? (ppm)?	
Specific Gravity	1.00
Physical Description	
Stream Consistency	Yes No
Oil in Sample?	Yes No
Temperature (F)	72.9
Conductivity	5.02 mS
% Solids	0.31
Turbidity	Yes No
Color	
TSS (%)	< 0.1
Radiation Screen (as needed)	
Lab Signature/Initials	J.H.

FINGERPRINT FORM

REPUBLIC INDUSTRIAL AND ENERGY SOLUTIONS, LLC

RECEIVING & APPROVAL FORM

RECEIVING INFORMATION	
Date	9-20-21
Receiving ID#	109202103
Manifest #	Line
Land Ban Cert included	Yes No
EGT Approval #	
Generator	
Client	
Transporter	
Time in	
Time out	
Received by	J.H.
Sampled by	J.

55T-2

LAB INFORMATION	
Compatible? (RT#)	
PCBs (ppm) (Oily Waste Only)?	
TOC ppm (CC Waste Only)?	
Flash Point (F)	>140
pH (S.U.)	6.52
Cyanides? (mg/L)	
Sulfides? (ppm)?	
Specific Gravity	1.01
Physical Description	
Stream Consistency	Yes No
Oil in Sample?	Yes No
Temperature (F)	75.8
Conductivity	26.4 mS
% Solids	0.84
Turbidity	Yes No
Color	
TSS (%)	<0.1
Radiation Screen (as needed)	
Lab Signature/Initials	J.J.

FINGERPRINT FORM

REPUBLIC INDUSTRIAL AND ENERGY SOLUTIONS, LLC

RECEIVING & APPROVAL FORM

RECEIVING INFORMATION	
Date	9-21-21
Receiving ID#	IO92121 01
Manifest #	Line
Land Ban Cert included	Yes No
EGT Approval #	
Generator	
Client	
Transporter	
Time in	
Time out	
Received by	J. J.
Sampled by	J. J.

LAB INFORMATION	
Compatible? (RT#)	Y
PCBs (ppm) (Oily Waste Only)?	
TOC ppm (CC Waste Only)?	
Flash Point (F)	140
pH (S.U.)	6.25
Cyanides? (mg/L)	
Sulfides? (ppm)?	
Specific Gravity	1.02
Physical Description	
Stream Consistency	Yes No
Oil in Sample?	Yes No
Temperature (F)	74.8
Conductivity	34.8ms
% Solids	2.08
Turbidity	Yes No
Color	
TSS (%)	50.1
Radiation Screen (as needed)	
Lab Signature/Initials	J. J.

FINGERPRINT FORM

REPUBLIC INDUSTRIAL AND ENERGY SOLUTIONS, LLC

RECEIVING & APPROVAL FORM

RECEIVING INFORMATION	
Date	9-21-21
Receiving ID#	109212102
Manifest #	Line
Land Ban Cert included	Yes No
EGT Approval #	
Generator	
Client	
Transporter	
Time in	
Time out	
Received by	J.71
Sampled by	

LAB INFORMATION	
Compatible? (RT#)	
PCBs (ppm) (Oily Waste Only)?	
TOC ppm (CC Waste Only)?	
Flash Point (F)	140
pH (S.U.)	7.52
Cyanides? (mg/L)	
Sulfides? (ppm)?	
Specific Gravity	1.02
Physical Description	
Stream Consistency	Yes No
Oil in Sample?	Yes No
Temperature (F)	71.4
Conductivity	36.3 mS
% Solids	2.44
Turbidity	Yes No
Color	
TSS (%)	<0.1
Radiation Screen (as needed)	
Lab Signature/Initials	

RECEIVING & APPROVAL FORM

RECEIVING INFORMATION	
Date	9-21-21
Receiving ID#	LOG212102-SST1
Manifest #	Line
Land Ban Cert included	Yes No
EGT Approval #	
Generator	
Client	
Transporter	
Time in	
Time out	
Received by	J.H.
Sampled by	DM

LAB INFORMATION	
Compatible? (RT#)	
PCBs (ppm) (Oily Waste Only)?	
TOC ppm (CC Waste Only)?	
Flash Point (F)	>140
pH (S.U.)	6.9
Cyanides? (mg/L)	
Sulfides? (ppm)?	
Specific Gravity	1.02
Physical Description	
Stream Consistency	Yes No
Oil in Sample?	Yes No
Temperature (F)	71.4
Conductivity	37.8 mS
% Solids	2.16
Turbidity	Yes No
Color	
TSS (%)	20.1
Radiation Screen (as needed)	
Lab Signature/Initials	J.H.

RECEIVING & APPROVAL FORM

RECEIVING INFORMATION	
Date	9-21-21
Receiving ID#	I09212103
Manifest #	Line
Land Ban Cert included	Yes No
EGT Approval #	
Generator	
Client	
Transporter	
Time in	
Time out	
Received by	J.T.
Sampled by	AW

LAB INFORMATION	
Compatible? (RT#)	
PCBs (ppm) (Oily Waste Only)?	
TOC ppm (CC Waste Only)?	
Flash Point (F)	> 140
pH (S.U.)	6.87
Cyanides? (mg/L)	
Sulfides? (ppm)?	
Specific Gravity	1.02
Physical Description	
Stream Consistency	Yes No
Oil in Sample?	Yes No
Temperature (F)	69.7
Conductivity	36.7 mS
% Solids	
Turbidity	Yes No
Color	
TSS (%)	2.13
Radiation Screen (as needed)	
Lab Signature/Initials	J.T.

RECEIVING & APPROVAL FORM

RECEIVING INFORMATION	
Date	9-22-21
Receiving ID#	109222101
Manifest #	Line
Land Ban Cert included	Yes No
EGT Approval #	
Generator	
Client	
Transporter	
Time in	
Time out	
Received by	J. H.
Sampled by	DB

LAB INFORMATION	
Compatible? (RT#)	
PCBs (ppm) (Oily Waste Only)?	
TOC ppm (CC Waste Only)?	
Flash Point (F)	1140
pH (S.U.)	3.96
Cyanides? (mg/L)	
Sulfides? (ppm)?	
Specific Gravity	1.01
Physical Description	
Stream Consistency	Yes No
Oil in Sample?	Yes No
Temperature (F)	70.0
Conductivity	7.49
% Solids	0.49
Turbidity	Yes No
Color	
TSS (%)	10.1
Radiation Screen (as needed)	
Lab Signature/Initials	J. H.

FINGERPRINT FORM

REPUBLIC INDUSTRIAL AND ENERGY SOLUTIONS, LLC

RECEIVING & APPROVAL FORM

RECEIVING INFORMATION	
Date	9-22-21
Receiving ID#	109222102
Manifest #	Line
Land Ban Cert included	Yes No
EGT Approval #	
Generator	
Client	
Transporter	
Time in	
Time out	
Received by	J. H.
Sampled by	J. H.

ST-1

LAB INFORMATION	
Compatible? (RT#)	X
PCBs (ppm) (Oily Waste Only)?	
TOC ppm (CC Waste Only)?	
Flash Point (F)	> 140
pH (S.U.)	6.75
Cyanides? (mg/L)	
Sulfides? (ppm)?	
Specific Gravity	1.02
Physical Description	
Stream Consistency	Yes No
Oil in Sample?	Yes No
Temperature (F)	71.2
Conductivity	33.6 mS
% Solids	1.85
Turbidity	Yes No
Color	
TSS (%)	< 0.1
Radiation Screen (as needed)	
Lab Signature/Initials	J. H.

FINGERPRINT FORM

REPUBLIC INDUSTRIAL AND ENERGY SOLUTIONS, LLC

RECEIVING & APPROVAL FORM

RECEIVING INFORMATION	
Date	9-22-21
Receiving ID#	109222103
Manifest #	Line
Land Ban Cert included	Yes No
EGT Approval #	
Generator	
Client	
Transporter	
Time in	
Time out	
Received by	J.T.
Sampled by	J.T.

LAB INFORMATION	
Compatible? (RT#)	✓
PCBs (ppm) (Oily Waste Only)?	
TOC ppm (CC Waste Only)?	
Flash Point (F)	7148
pH (S.U.)	6.71
Cyanides? (mg/L)	
Sulfides? (ppm)?	
Specific Gravity	1.02
Physical Description	
Stream Consistency	Yes No
Oil in Sample?	Yes No
Temperature (F)	65.7
Conductivity	38.1
% Solids	2.46
Turbidity	Yes No
Color	
TSS (%)	<0.1
Radiation Screen (as needed)	
Lab Signature/Initials	J.H.

RECEIVING & APPROVAL FORM

RECEIVING INFORMATION	
Date	9.22.21
Receiving ID#	109222104
Manifest #	Line
Land Ban Cert included	Yes No
EGT Approval #	
Generator	
Client	
Transporter	
Time in	
Time out	
Received by	J.H.
Sampled by	AW

LAB INFORMATION	
Compatible? (RT#)	
PCBs (ppm) (Only Waste Only)?	
TOC ppm (CC Waste Only)?	
Flash Point (F)	140
pH (S.U.)	6.73
Cyanides? (mg/L)	
Sulfides? (ppm)?	
Specific Gravity	1.02
Physical Description	
Stream Consistency	Yes No
Oil in Sample?	Yes No
Temperature (F)	65.6
Conductivity	357 mS
% Solids	2.19
Turbidity	Yes No
Color	
TSS (%)	<0.1
Radiation Screen (as needed)	
Lab Signature/Initials	J.H.

RECEIVING & APPROVAL FORM

RECEIVING INFORMATION	
Date	9.22.21
Receiving ID#	IC9222108
Manifest #	Line
Land Ban Cert included	Yes No
EGT Approval #	
Generator	
Client	
Transporter	
Time in	
Time out	
Received by	J.T.
Sampled by	AV

LAB INFORMATION	
Compatible? (RT#)	
PCBs (ppm) (Oily Waste Only)?	
TOC ppm (CC Waste Only)?	
Flash Point (F)	> 140
pH (S.U.)	6.69
Cyanides? (mg/L)	
Sulfides? (ppm)?	
Specific Gravity	1.02
Physical Description	
Stream Consistency	Yes No
Oil in Sample?	Yes No
Temperature (F)	65.6
Conductivity	14.2 mS
% Solids	2.41
Turbidity	Yes No
Color	
TSS (%)	30.1
Radiation Screen (as needed)	
Lab Signature/Initials	J.H.

RECEIVING & APPROVAL FORM

RECEIVING INFORMATION	
Date	9-23-21
Receiving ID#	109232101
Manifest #	Line
Land Ban Cert included	Yes No
EGT Approval #	
Generator	
Client	
Transporter	
Time in	
Time out	
Received by	J.T.
Sampled by	AW

LAB INFORMATION	
Compatible? (RT#)	
PCBs (ppm) (Oily Waste Only)?	
TOC ppm (CC Waste Only)?	
Flash Point (F)	> 140
pH (S.U.)	6.74
Cyanides? (mg/L)	
Sulfides? (ppm)?	
Specific Gravity	1.02
Physical Description	
Stream Consistency	Yes No
Oil in Sample?	Yes No
Temperature (F)	65.7
Conductivity	12.2
% Solids	2.80
Turbidity	Yes No
Color	
TSS (%)	< 0.1
Radiation Screen (as needed)	
Lab Signature/Initials	J.H.

RECEIVING & APPROVAL FORM

RECEIVING INFORMATION	
Date	9-23-21
Receiving ID#	209237102 SST-1
Manifest #	Line
Land Ban Cert included	Yes No
EGT Approval #	
Generator	
Client	
Transporter	
Time in	
Time out	
Received by	J. T.
Sampled by	DM

LAB INFORMATION	
Compatible? (RT#)	
PCBs (ppm) (Oily Waste Only)?	
TOC ppm (CC Waste Only)?	
Flash Point (F)	> 140
pH (S.U.)	3.94
Cyanides? (mg/L)	
Sulfides? (ppm)?	
Specific Gravity	1.01
Physical Description	
Stream Consistency	Yes No
Oil in Sample?	Yes No
Temperature (F)	65.8
Conductivity	14.70
% Solids	1.38
Turbidity	Yes No
Color	
TSS (%)	< 0.1
Radiation Screen (as needed)	
Lab Signature/Initials	J. T.

FINGERPRINT FORM

REPUBLIC INDUSTRIAL AND ENERGY SOLUTIONS, LLC

RECEIVING & APPROVAL FORM

RECEIVING INFORMATION	
Date	9-23-21
Receiving ID#	I09232104
Manifest #	Line
Land Ban Cert included	Yes No
EGT Approval #	
Generator	
Client	
Transporter	
Time in	
Time out	
Received by	J.F.
Sampled by	AW

LAB INFORMATION	
Compatible? (RT#)	
PCBs (ppm) (Oily Waste Only)?	
TOC ppm (CC Waste Only)?	
Flash Point (F)	>140
pH (S.U.)	6.79
Cyanides? (mg/L)	
Sulfides? (ppm)?	
Specific Gravity	1.02
Physical Description	
Stream Consistency	Yes No
Oil in Sample?	Yes No
Temperature (F)	68.6
Conductivity	33.0 μ S
% Solids	1.94
Turbidity	Yes No
Color	
TSS (%)	<0.1
Radiation Screen (as needed)	
Lab Signature/Initials	J.H.

FINGERPRINT FORM

REPUBLIC INDUSTRIAL AND ENERGY SOLUTIONS, LLC

RECEIVING & APPROVAL FORM

RECEIVING INFORMATION	
Date	9.23.21
Receiving ID#	IO9 232105
Manifest #	Line
Land Ban Cert included	Yes No
EGT Approval #	
Generator	
Client	
Transporter	
Time in	
Time out	
Received by	J.H.
Sampled by	AW

LAB INFORMATION	
Compatible? (RT#)	
PCBs (ppm) (Oily Waste Only)?	
TOC ppm (CC Waste Only)?	
Flash Point (F)	> 140
pH (S.U.)	6.80
Cyanides? (mg/L)	
Sulfides? (ppm)?	
Specific Gravity	1.02
Physical Description	
Stream Consistency	Yes No
Oil in Sample?	Yes No
Temperature (F)	69.1
Conductivity	32.8 mS
% Solids	2.00
Turbidity	Yes No
Color	
TSS (%)	< 0.1
Radiation Screen (as needed)	
Lab Signature/Initials	J.H.

RECEIVING & APPROVAL FORM

RECEIVING INFORMATION	
Date	9-24-21
Receiving ID#	109 24 21 01
Manifest #	Line
Land Ban Cert included	Yes No
EGT Approval #	
Generator	
Client	
Transporter	
Time in	
Time out	
Received by	J.F.
Sampled by	AW

LAB INFORMATION	
Compatible? (RT#)	
PCBs (ppm) (Oily Waste Only)?	
TOC ppm (CC Waste Only)?	
Flash Point (F)	>140
pH (S.U.)	6.80
Cyanides? (mg/L)	
Sulfides? (ppm)?	
Specific Gravity	1.02
Physical Description	
Stream Consistency	Yes No
Oil in Sample?	Yes No
Temperature (F)	68.9
Conductivity	32.1 mS
% Solids	1.76
Turbidity	Yes No
Color	
TSS (%)	<0.1
Radiation Screen (as needed)	
Lab Signature/Initials	J.F.

RECEIVING & APPROVAL FORM

RECEIVING INFORMATION	
Date	9-24-21
Receiving ID#	1092421 02
Manifest #	Line
Land Ban Cert included	Yes No
EGT Approval #	
Generator	
Client	
Transporter	
Time in	
Time out	
Received by	J. J.
Sampled by	J. J.

LAB INFORMATION	
Compatible? (RT#)	X
PCBs (ppm) (Oily Waste Only)?	
TOC ppm (CC Waste Only)?	
Flash Point (F)	> 140
pH (S.U.)	6.73
Cyanides? (mg/L)	
Sulfides? (ppm)?	
Specific Gravity	1.02
Physical Description	
Stream Consistency	Yes No
Oil in Sample?	Yes No
Temperature (F)	68.4
Conductivity	29.8 mS
% Solids	1.9
Turbidity	Yes No
Color	
TSS (%)	< 0.1
Radiation Screen (as needed)	
Lab Signature/Initials	J. J.

FINGERPRINT FORM

REPUBLIC INDUSTRIAL AND ENERGY SOLUTIONS, LLC

RECEIVING & APPROVAL FORM

RECEIVING INFORMATION	
Date	9-24-21
Receiving ID#	IO9242103
Manifest #	Line
Land Ban Cert included	Yes No
EGT Approval #	
Generator	
Client	
Transporter	
Time in	
Time out	
Received by	(J.T.)
Sampled by	

LAB INFORMATION	
Compatible? (RT#)	Y
PCBs (ppm) (Oily Waste Only)?	
TOC ppm (CC Waste Only)?	
Flash Point (F)	>140
pH (S.U.)	6.68
Cyanides? (mg/L)	
Sulfides? (ppm)?	
Specific Gravity	1.02
Physical Description	
Stream Consistency	Yes No
Oil in Sample?	Yes No
Temperature (F)	70.0
Conductivity	25.6 μ S
% Solids	1.69
Turbidity	Yes No
Color	
TSS (%)	<0.1
Radiation Screen (as needed)	
Lab Signature/Initials	(J.T.)

RECEIVING & APPROVAL FORM

RECEIVING INFORMATION	
Date	9.24.21
Receiving ID#	109242104
Manifest #	Line
Land Ban Cert included	Yes No
EGT Approval #	
Generator	
Client	
Transporter	
Time in	
Time out	
Received by	J.T.
Sampled by	AW

LAB INFORMATION	
Compatible? (RT#)	
PCBs (ppm) (Oily Waste Only)?	
TOC ppm (CC Waste Only)?	
Flash Point (F)	> 140
pH (S.U.)	6.86
Cyanides? (mg/L)	
Sulfides? (ppm)?	
Specific Gravity	1.02
Physical Description	
Stream Consistency	Yes No
Oil in Sample?	Yes No
Temperature (F)	69.4 - 50
Conductivity	27.8 mS
% Solids	1.60
Turbidity	Yes No
Color	
TSS (%)	< 0.1
Radiation Screen (as needed)	
Lab Signature/Initials	J.T.

RECEIVING & APPROVAL FORM

RECEIVING INFORMATION	
Date	9-24-21
Receiving ID#	109242103
Manifest #	Line
Land Ban Cert included	Yes No
EGT Approval #	
Generator	
Client	
Transporter	
Time in	
Time out	
Received by	J.T.
Sampled by	AW

LAB INFORMATION	
Compatible? (RT#)	
PCBs (ppm) (Oily Waste Only)?	
TOC ppm (CC Waste Only)?	
Flash Point (F)	>140
pH (S.U.)	6.76
Cyanides? (mg/L)	
Sulfides? (ppm)?	
Specific Gravity	1.02
Physical Description	
Stream Consistency	Yes No
Oil in Sample?	Yes No
Temperature (F)	69.3
Conductivity	28.9-5
% Solids	1.80
Turbidity	Yes No
Color	
TSS (%)	<0.1
Radiation Screen (as needed)	
Lab Signature/Initials	J.T.

RECEIVING & APPROVAL FORM

RECEIVING INFORMATION	
Date	9-27-21
Receiving ID#	109272101
Manifest #	Line
Land Ban Cert included	Yes No
EGT Approval #	
Generator	
Client	
Transporter	
Time in	
Time out	
Received by	J.T)
Sampled by	DM

LAB INFORMATION	
Compatible? (RT#)	
PCBs (ppm) (Oily Waste Only)?	
TOC ppm (CC Waste Only)?	
Flash Point (F)	> 140
pH (S.U.)	1.88
Cyanides? (mg/L)	
Sulfides? (ppm)?	
Specific Gravity	1.00
Physical Description	
Stream Consistency	Yes No
Oil in Sample?	Yes No
Temperature (F)	69.0
Conductivity	23.4 μ S
% Solids	0.34
Turbidity	Yes No
Color	
TSS (%)	< 0.1
Radiation Screen (as needed)	
Lab Signature/Initials	J.T)

RECEIVING & APPROVAL FORM

RECEIVING INFORMATION	
Date	9-27-21
Receiving ID#	0.4 304272102
Manifest #	Line
Land Ban Cert included	Yes No
EGT Approval #	
Generator	
Client	
Transporter	
Time in	
Time out	
Received by	J. D
Sampled by	D3

I09272102

LAB INFORMATION	
Compatible? (RT#)	
PCBs (ppm) (Oily Waste Only)?	
TOC ppm (CC Waste Only)?	
Flash Point (F)	>140
pH (S.U.)	5.55
Cyanides? (mg/L)	
Sulfides? (ppm)?	
Specific Gravity	1.01
Physical Description	
Stream Consistency	Yes No
Oil in Sample?	Yes No
Temperature (F)	70.3
Conductivity	20.2 mS
% Solids	1.47
Turbidity	Yes No
Color	
TSS (%)	<0.1
Radiation Screen (as needed)	
Lab Signature/Initials	J. D

RECEIVING & APPROVAL FORM

RECEIVING INFORMATION	
Date	9-27-21
Receiving ID#	109272103
Manifest #	Line
Land Ban Cert included	Yes No
EGT Approval #	
Generator	
Client	
Transporter	
Time in	
Time out	
Received by	J.T.
Sampled by	AM

LAB INFORMATION	
Compatible? (RT#)	
PCBs (ppm) (Oily Waste Only)?	
TOC ppm (CC Waste Only)?	
Flash Point (F)	>140
pH (S.U.)	6.82
Cyanides? (mg/L)	
Sulfides? (ppm)?	
Specific Gravity	1.01
Physical Description	
Stream Consistency	Yes No
Oil in Sample?	Yes No
Temperature (F)	71.0
Conductivity	25.3ms
% Solids	1.46
Turbidity	Yes No
Color	
TSS (%)	<0.1
Radiation Screen (as needed)	5.7 3.7
Lab Signature/Initials	J.H.

RECEIVING & APPROVAL FORM

RECEIVING INFORMATION	
Date	9-27-21
Receiving ID#	109272104
Manifest #	Line
Land Ban Cert included	Yes No
EGT Approval #	
Generator	
Client	
Transporter	
Time in	
Time out	
Received by	J.A.
Sampled by	Aw

LAB INFORMATION	
Compatible? (RT#)	
PCBs (ppm) (Oily Waste Only)?	
TOC ppm (CC Waste Only)?	
Flash Point (F)	> 140
pH (S.U.)	6.80
Cyanides? (mg/L)	
Sulfides? (ppm)?	
Specific Gravity	1.02
Physical Description	
Stream Consistency	Yes No
Oil in Sample?	Yes No
Temperature (F)	70.9
Conductivity	26.8mg
% Solids	2.64
Turbidity	Yes No
Color	
TSS (%)	< 0.1
Radiation Screen (as needed)	
Lab Signature/Initials	J.H.

RECEIVING & APPROVAL FORM

RECEIVING INFORMATION	
Date	9.28.21
Receiving ID#	I09282101
Manifest #	Line
Land Ban Cert included	Yes No
EGT Approval #	
Generator	
Client	
Transporter	
Time in	
Time out	
Received by	J.H.
Sampled by	AW

LAB INFORMATION	
Compatible? (RT#)	
PCBs (ppm) (Oily Waste Only)?	
TOC ppm (CC Waste Only)?	
Flash Point (F)	>140
pH (S.U.)	2.01
Cyanides? (mg/L)	
Sulfides? (ppm)?	
Specific Gravity	1.00
Physical Description	
Stream Consistency	Yes No
Oil in Sample?	Yes No
Temperature (F)	71.3
Conductivity	500 → 17.93
% Solids	0.41
Turbidity	Yes No
Color	
TSS (%)	<0.1
Radiation Screen (as needed)	
Lab Signature/Initials	J.H.

RECEIVING & APPROVAL FORM

RECEIVING INFORMATION	
Date	9-28-21
Receiving ID#	109282102
Manifest #	Line
Land Ban Cert included	Yes No
EGT Approval #	
Generator	
Client	
Transporter	
Time in	
Time out	
Received by	J.N
Sampled by	DM

LAB INFORMATION	
Compatible? (RT#)	
PCBs (ppm) (Oily Waste Only)?	
TOC ppm (CC Waste Only)?	
Flash Point (F)	> 140
pH (S.U.)	1.80
Cyanides? (mg/L)	
Sulfides? (ppm)?	
Specific Gravity	1.00
Physical Description	
Stream Consistency	Yes No
Oil in Sample?	Yes No
Temperature (F)	69.9
Conductivity	202 uS
% Solids	0.26
Turbidity	Yes No
Color	
TSS (%)	< 0.1
Radiation Screen (as needed)	
Lab Signature/Initials	J.H

RECEIVING & APPROVAL FORM

RECEIVING INFORMATION	
Date	9-28-21
Receiving ID#	209282103
Manifest #	Line
Land Ban Cert included	Yes No
EGT Approval #	
Generator	
Client	
Transporter	
Time in	
Time out	
Received by	J.T.
Sampled by	AW

LAB INFORMATION	
Compatible? (RT#)	
PCBs (ppm) (Oily Waste Only)?	
TOC ppm (CC Waste Only)?	
Flash Point (F)	>140
pH (S.U.)	6.81
Cyanides? (mg/L)	
Sulfides? (ppm)?	
Specific Gravity	1.02
Physical Description	
Stream Consistency	Yes No
Oil in Sample?	Yes No
Temperature (F)	69.8
Conductivity	27.6ms
% Solids	1.62
Turbidity	Yes No
Color	
TSS (%)	<0.1
Radiation Screen (as needed)	
Lab Signature/Initials	J.A.

RECEIVING & APPROVAL FORM

RECEIVING INFORMATION	
Date	4.28.21
Receiving ID#	109282104
Manifest #	Line
Land Ban Cert included	Yes No
EGT Approval #	
Generator	
Client	
Transporter	
Time in	
Time out	
Received by	J.T.
Sampled by	AW

LAB INFORMATION	
Compatible? (RT#)	
PCBs (ppm) (Oily Waste Only)?	
TOC ppm (CC Waste Only)?	
Flash Point (F)	> 148
pH (S.U.)	6.80
Cyanides? (mg/L)	
Sulfides? (ppm)?	
Specific Gravity	1.02
Physical Description	
Stream Consistency	Yes No
Oil in Sample?	Yes No
Temperature (F)	69.6
Conductivity	30.6
% Solids	1.9
Turbidity	Yes No
Color	
TSS (%)	< 0.1
Radiation Screen (as needed)	
Lab Signature/Initials	J.T.

RECEIVING & APPROVAL FORM

RECEIVING INFORMATION	
Date	9-29-21
Receiving ID#	109292101
Manifest #	Line
Land Ban Cert included	Yes No
EGT Approval #	
Generator	
Client	
Transporter	
Time in	
Time out	
Received by	J.N
Sampled by	AW

LAB INFORMATION	
Compatible? (RT#)	
PCBs (ppm) (Oily Waste Only)?	
TOC ppm (CC Waste Only)?	
Flash Point (F)	> 140
pH (S.U.)	2.01
Cyanides? (mg/L)	
Sulfides? (ppm)?	
Specific Gravity	1.00
Physical Description	
Stream Consistency	Yes No
Oil in Sample?	Yes No
Temperature (F)	69.7
Conductivity	16.45 mS
% Solids	0.28
Turbidity	Yes No
Color	
TSS (%)	10.1
Radiation Screen (as needed)	
Lab Signature/Initials	J.N

RECEIVING & APPROVAL FORM

RECEIVING INFORMATION	
Date	9-29-21
Receiving ID#	109292102
Manifest #	Line
Land Ban Cert included	Yes No
EGT Approval #	
Generator	
Client	
Transporter	
Time in	
Time out	
Received by	J.T.
Sampled by	DM

LAB INFORMATION	
Compatible? (RT#)	
PCBs (ppm) (Oily Waste Only)?	
TOC ppm (CC Waste Only)?	
Flash Point (F)	> 140
pH (S.U.)	6.74
Cyanides? (mg/L)	
Sulfides? (ppm)?	
Specific Gravity	1.02
Physical Description	
Stream Consistency	Yes No
Oil in Sample?	Yes No
Temperature (F)	71.0
Conductivity	35.9 mg
% Solids	2.59
Turbidity	Yes No
Color	
TSS (%)	< 0.1
Radiation Screen (as needed)	
Lab Signature/Initials	J.T.

RECEIVING & APPROVAL FORM

RECEIVING INFORMATION	
Date	9-29-21
Receiving ID#	1092921 03
Manifest #	Line
Land Ban Cert included	Yes No
EGT Approval #	
Generator	
Client	
Transporter	
Time in	
Time out	
Received by	J.N.
Sampled by	J.N.

LAB INFORMATION	
Compatible? (RT#)	X
PCBs (ppm) (Oily Waste Only)?	
TOC ppm (CC Waste Only)?	
Flash Point (F)	>140
pH (S.U.)	6.69
Cyanides? (mg/L)	
Sulfides? (ppm)?	
Specific Gravity	1.02
Physical Description	
Stream Consistency	Yes No
Oil in Sample?	Yes No
Temperature (F)	72.1
Conductivity	23.5 mS
% Solids	1.38
Turbidity	Yes No
Color	
TSS (%)	<0.1
Radiation Screen (as needed)	
Lab Signature/Initials	J.N.

RECEIVING & APPROVAL FORM

RECEIVING INFORMATION	
Date	9.29.21
Receiving ID#	109292104
Manifest #	Line
Land Ban Cert included	Yes No
EGT Approval #	
Generator	
Client	
Transporter	
Time in	
Time out	
Received by	J.T.
Sampled by	AW

LAB INFORMATION	
Compatible? (RT#)	
PCBs (ppm) (Oily Waste Only)?	
TOC ppm (CC Waste Only)?	
Flash Point (F)	51.4
pH (S.U.)	6.78
Cyanides? (mg/L)	
Sulfides? (ppm)?	
Specific Gravity	1.01
Physical Description	
Stream Consistency	Yes No
Oil in Sample?	Yes No
Temperature (F)	69.1
Conductivity	19.50 mS
% Solids	1.24
Turbidity	Yes No
Color	
TSS (%)	0.1
Radiation Screen (as needed)	
Lab Signature/Initials	J.T.

RECEIVING & APPROVAL FORM

RECEIVING INFORMATION	
Date	9-29-21
Receiving ID#	109292105
Manifest #	Line
Land Ban Cert included	Yes No
EGT Approval #	
Generator	
Client	
Transporter	
Time in	
Time out	
Received by	J.F.
Sampled by	AW

LAB INFORMATION	
Compatible? (RT#)	
PCBs (ppm) (Oily Waste Only)?	
TOC ppm (CC Waste Only)?	
Flash Point (F)	2148
pH (S.U.)	6.67
Cyanides? (mg/L)	
Sulfides? (ppm)?	
Specific Gravity	1.01
Physical Description	
Stream Consistency	Yes No
Oil in Sample?	Yes No
Temperature (F)	69.2
Conductivity	203mS
% Solids	1.46
Turbidity	Yes No
Color	
TSS (%)	<0.1
Radiation Screen (as needed)	
Lab Signature/Initials	J.F.

RECEIVING & APPROVAL FORM

RECEIVING INFORMATION	
Date	9.30.21
Receiving ID#	I09302101
Manifest #	Line
Land Ban Cert included	Yes No
EGT Approval #	
Generator	
Client	
Transporter	
Time in	
Time out	
Received by	J.T.
Sampled by	AW

LAB INFORMATION	
Compatible? (RT#)	
PCBs (ppm) (Oily Waste Only)?	
TOC ppm (CC Waste Only)?	
Flash Point (F)	> 148
pH (S.U.)	2.00
Cyanides? (mg/L)	
Sulfides? (ppm)?	
Specific Gravity	1.00
Physical Description	
Stream Consistency	Yes No
Oil in Sample?	Yes No
Temperature (F)	69.4
Conductivity	17.34ms
% Solids	0.84
Turbidity	Yes No
Color	
TSS (%)	< 0.1
Radiation Screen (as needed)	
Lab Signature/Initials	J.T.

FINGERPRINT FORM

REPUBLIC INDUSTRIAL AND ENERGY SOLUTIONS, LLC

RECEIVING & APPROVAL FORM

RECEIVING INFORMATION	
Date	9-30-21
Receiving ID#	IC9302102
Manifest #	Line
Land Ban Cert included	Yes No
EGT Approval #	
Generator	
Client	
Transporter	
Time in	
Time out	
Received by	
Sampled by	JAY

LAB INFORMATION	
Compatible? (RT#)	
PCBs (ppm) (Oily Waste Only)?	
TOC ppm (CC Waste Only)?	
Flash Point (F)	2140
pH (S.U.)	6.99
Cyanides? (mg/L)	
Sulfides? (ppm)?	
Specific Gravity	1.01
Physical Description	
Stream Consistency	Yes No
Oil in Sample?	Yes No
Temperature (F)	69.5
Conductivity	19.70-5
% Solids	1.06
Turbidity	Yes No
Color	
TSS (%)	20.1
Radiation Screen (as needed)	
Lab Signature/Initials	J.T.

FINGERPRINT FORM

REPUBLIC INDUSTRIAL AND ENERGY SOLUTIONS, LLC

RECEIVING & APPROVAL FORM

RECEIVING INFORMATION	
Date	109302103
Receiving ID#	
Manifest #	Line
Land Ban Cert included	Yes No
EGT Approval #	
Generator	
Client	
Transporter	
Time in	
Time out	
Received by	J.T.
Sampled by	J.T.

LAB INFORMATION	
Compatible? (RT#)	
PCBs (ppm) (Oily Waste Only)?	
TOC ppm (CC Waste Only)?	
Flash Point (F)	2140
pH (S.U.)	6.97
Cyanides? (mg/L)	
Sulfides? (ppm)?	
Specific Gravity	1.02
Physical Description	
Stream Consistency	Yes No
Oil in Sample?	Yes No
Temperature (F)	71.3
Conductivity	26.9ms
% Solids	1.38
Turbidity	Yes No
Color	
TSS (%)	<0.1
Radiation Screen (as needed)	
Lab Signature/Initials	J.T.

RECEIVING & APPROVAL FORM

RECEIVING INFORMATION	
Date	9-30-21
Receiving ID#	109302104
Manifest #	Line
Land Ban Cert included	Yes No
EGT Approval #	
Generator	
Client	
Transporter	
Time in	
Time out	
Received by	J.H.
Sampled by	AW

LAB INFORMATION	
Compatible? (RT#)	
PCBs (ppm) (Oily Waste Only)?	
TOC ppm (CC Waste Only)?	
Flash Point (F)	
pH (S.U.)	7.15
Cyanides? (mg/L)	
Sulfides? (ppm)?	
Specific Gravity	1.02
Physical Description	
Stream Consistency	Yes No
Oil in Sample?	Yes No
Temperature (F)	73.6
Conductivity	27.6 mS
% Solids	1.43
Turbidity	Yes No
Color	
TSS (%)	<0.1
Radiation Screen (as needed)	
Lab Signature/Initials	J.H.

RECEIVING & APPROVAL FORM

RECEIVING INFORMATION	
Date	9-31-21
Receiving ID#	109312101
Manifest #	Line
Land Ban Cert included	Yes No
EGT Approval #	
Generator	
Client	
Transporter	
Time in	
Time out	
Received by	J.J.
Sampled by	AW

LAB INFORMATION	
Compatible? (RT#)	
PCBs (ppm) (Oily Waste Only)?	
TOC ppm (CC Waste Only)?	
Flash Point (F)	>140
pH (S.U.)	1.86
Cyanides? (mg/L)	
Sulfides? (ppm)?	
Specific Gravity	1.01
Physical Description	
Stream Consistency	Yes No
Oil in Sample?	Yes No
Temperature (F)	69.2
Conductivity	26.0 mS
% Solids	0.36
Turbidity	Yes No
Color	
TSS (%)	<0.1
Radiation Screen (as needed)	
Lab Signature/Initials	J.J.

WASTE PROFILES



Republic Services

18500 N. Allied Way, Phoenix, AZ 85054

SPECIAL WASTE DEPARTMENT DECISION

Waste Profile #
64402132872

Expiration Date
8/16/2022

I. Decision Request:

☒ Initial ☐ Recertification ☐ Change

Disposal Facility: 6440 - Detroit Industrial Well

Generator Name: COMPONENT REPAIR TECHNOLOGIES

Generator Site Address: 8507 TYLER BLVD.

City: MENTOR

County:

State: OH

Zip: 44060

Name of Waste: PHOSPHORIC ACID RINSE WATER

Estimated Annual Volume: 4000 Gallons

II. Special Waste Department Decision:

☒ Approved ☐ Rejected

Management Method(s): ☐ Landfill ☐ Solidification ☐ Bioremediation ☒ Deep Well ☐ Transfer Facility

Problematic Special Waste according to Republic? ☐ Yes ☒ No

If yes, which one?

Approved by Special Waste Review Committee? ☐ Yes ☐ No ☒ Not Applicable

Precautions, Conditions or Limitations on Approval

The site must ensure that all pre-acceptance and verification analytical is performed in accordance with the site's permit requirements prior to acceptance and disposal of the profiled waste.

Special Waste Analyst Signature: 

Name (Printed): KEITH DIAMANTI

Date: 9/10/2021

III. Facility Decision:

☒ Approved ☐ Rejected

Precautions, Conditions or Limitations on Approval

By signing below, the General Manager or Designee agrees that a fully executed Special Waste Service Agreement is on file for this profile and that the special waste file is complete.

General Manager or Designee: 

Name (Printed): John Frost

Date: 9/10/2021
9-23-21

Republic Industrial and Energy Solutions, LLC

28470 Citrin Dr, Romulus, MI 48174. Telephone 734 946 1000. Fax 734 946 1002

GENERATOR WASTE PROFILEProfile # 64402132872**GENERATOR INFORMATION**

Name: COMPONENT REPAIR TECHNOLOGIES USEPA ID # OHD147190417
Facility Address: 8507 TYLER BLVD. SIC/NAICS Code: _____ State Code: _____
City: MENTOR State: OH Zip Code: 44060
Contact: ASIA PATTERSON Title: _____ Phone: (440) 255-1973 Fax: () _____

BILLING INFORMATION☐ SAME AS ABOVE

Company Name: ENVIROSERVE INC
Address: 4600 BROOKPARK ROAD
City: CLEVELAND State: OH Zip Code: 44134
Attention: BRENDA DUPLAGA Title: _____ Phone: (216) 642-1311 Fax: () _____

WASTE INFORMATION

Name of Waste/Common Chemical Name:
PHOSPHORIC ACID RINSE WATER

Process Generating Waste (Please be specific, incomplete information may delay the approval process):

DIP TANK AND RINSE WATER TANK**USEPA / STATE WASTE IDENTIFICATION**

- This waste is considered to be: ☐ Non Hazardous Liquid Industrial Waste ☒ Hazardous Waste
- Regulated by TSCA? ☐ Yes ☐ No (PCBs, etc.)
- List ALL Applicable Waste Codes: D002

PHYSICAL CHARACTERISTICS OF WASTE

Color: <input checked="" type="checkbox"/> White/Clear <input checked="" type="checkbox"/> Black/Brown <input type="checkbox"/> Other	Suspended Solids <input checked="" type="checkbox"/> 0-1 % <input type="checkbox"/> 3-5 % <input type="checkbox"/> 1-3 % <input type="checkbox"/> > 5%	Layers: <input type="checkbox"/> Multi layered <input type="checkbox"/> Bi-Layered <input checked="" type="checkbox"/> Single Phase	Specific Gravity: <input type="checkbox"/> <0.8 <input checked="" type="checkbox"/> 1.0 — 1.2 <input type="checkbox"/> 0.8 — 1.0 <input type="checkbox"/> 1.3 — 1.4 Exact / Other <input type="text"/>
---	---	---	--

pH: ☐ NA ☒ < 2 ☐ 2 — 4 ☐ 4 — 6 ☐ 6 — 8 ☐ 8-10 ☐ 10 — 12.5 ☐ > 12.5Liquid Flash Point: ☐ < 73°F ☐ 73—100°F ☐ 101—140°F ☐ 141—200°F ☒ > 200°F ☐ None ☐ Closed Cup ☐ Open CupVOC CONCENTRATION - NA PPM (MUST BE COMPLETED)

TOTAL COMPOSITION OF WASTE - MUST BE EQUAL TO OR GREATER THAN 100% (LIST EACH CONSTITUENT <= 0.1%)

CONSTITUENT	MAX	MIN	CONSTITUENT	MAX	MIN
WATER	75	95			
PHOSPHORIC ACID	5	25			

Metals: Indicate if this waste contains any of the following metals
If Generator knowledge-provide backup ☐ Lab Analysis ☐ Generator Knowledge ☐ TCLP ☐ TOTAL

	Not Present	Concentration		Not Present	Concentration				
PCB	<input checked="" type="checkbox"/>	ppm	Aromatic Amine	<input checked="" type="checkbox"/>	ppm	Arsenic (As)	D004	<input checked="" type="checkbox"/> <5	ppm ppm
Dioxins	<input checked="" type="checkbox"/>	ppm	Pesticides	<input checked="" type="checkbox"/>	ppm	Barium (Ba)	D005	<input checked="" type="checkbox"/> <100	ppm ppm
Cyanides Reactive	<input checked="" type="checkbox"/>	ppm	Rodenticides	<input checked="" type="checkbox"/>	ppm	Cadmium (Cd)	D006	<input checked="" type="checkbox"/> <1	ppm ppm
Cyanides Total	<input checked="" type="checkbox"/>	ppm	Fungicides	<input checked="" type="checkbox"/>	ppm	Chromium (Cr)	D007	<input checked="" type="checkbox"/> <5	ppm ppm
Sulfides Reactive	<input checked="" type="checkbox"/>	ppm				Lead (Pb)	D008	<input checked="" type="checkbox"/> <5	ppm ppm
Sulfides Total	<input checked="" type="checkbox"/>	ppm				Mercury (Hg)	D009	<input checked="" type="checkbox"/> <0.2	ppm ppm
						Selenium (Se)	D010	<input checked="" type="checkbox"/> <1	ppm ppm
						Silver (Ag)	D011	<input checked="" type="checkbox"/> <5	ppm ppm

TCLP Organics D012 — D043 above regulatory limits: Present ☐ Not Present ☒

IS WASTE ANY OF THE FOLLOWING?

At Least One Box Must Be Checked.

- ☐ Radioactive ☐ Water Reactive ☐ Oxidizer ☐ Shock Sensitive ☐ Reactive (other) ☐ DOT Explosives
☐ NIOSH Human-Positive Carcinogens ☐ NESHAP Wastes (Benzene, etc.) ☐ Biological ☒ None Apply

SHIPPING INFORMATION

1. Is this a DOT Hazardous Material (49CFR 172.101 & 173 Subpart D)? ☒ Yes ☐ No
2. Reportable Quantity (RQ) in pounds 100
3. DOT Shipping Name Waste PHOSPHORIC ACID SOLUTION Hazard Class 8 UN/NA UN1805
PG III ERG 154 Hazardous Constituents for "n.o.s." _____
4. Method of Shipment: ☒ Bulk Tanker ☐ Vac truck ☐ Rail Car ☐ Drums ☐ Totes
5. Number of Units to Ship Now _____ 6. Anticipated Volume / Units per Year: 4000 GALLONS or ☐ One Time
6. Special Handling Requirements Including PPE: _____

CERTIFICATION STATEMENT

I hereby represent and warrant that I have personally examined and am familiar with the information contained and submitted in this and all attached documents. Based on my inquiry and personal knowledge of those individuals responsible for supplying or obtaining the information, the information contained herein is true, accurate, and complete to the best of my knowledge and belief. Furthermore, no material fact has been omitted as to make this information misleading. I understand that others may rely on this representation and warranty in the handling and processing of the waste material described herein.

If this box is checked ☐ I request Republic Industrial & Energy Solutions not to correct any inconsistencies. Any corrections Republic Industrial & Energy Solutions makes will be consistent with the results of the sample characterization and/or regulatory requirements.

Printed Name: Asa Peterson Title: EHS Engineer
Generator's Signature: [Signature] Date: 8/16/21

GENERATOR'S CHAIN OF CUSTODY RECORD INSTRUCTIONS: PLEASE collect a representative 1-quart sample of the waste described in the above referenced GENERATORS WASTE PROFILE REPORT using an appropriate container. A representative sample is one obtained using any of the applicable sampling methods cited in 40 CFR 261-Appendix 1. Fill in the sampling information in the spaces provided below. If you have problems obtaining a representative sample of your waste, please contact your Republic Industrial & Energy Solutions representative.

1. _____ 2. _____
SAMPLING METHOD COLLECTION POINT
3. _____
SAMPLE COLLECTOR'S NAME, TITLE, EMPLOYER
4. Sample No. _____ Preservation: Yes ☐ No ☐
5. CHAIN OF CUSTODY Each person who handles the sample must sign below when the sample passes from one to another.

Relinquished by: (Signature)	Date	Time	Received by: (Signature)	Date	Time



Republic Services

18500 N. Allied Way, Phoenix, AZ 85054

SPECIAL WASTE DEPARTMENT DECISION

Waste Profile #
64402130502

Expiration Date
7/9/2022

I. Decision Request:

☒ Initial ☐ Recertification ☐ Change

Disposal Facility: 6440 - Detroit Industrial Well

Generator Name: CECOS International Inc.

Generator Site Address: ABER ROAD

City: WILLIAMSBURG

County:

State: OH

Zip:

Name of Waste: CMI LEACHATE

Estimated Annual Volume: 86,000 Gallons

II. Special Waste Department Decision:

☒ Approved ☐ Rejected

Management Method(s):

☐ Landfill

☐ Solidification

☐ Bioremediation

☒ Deep Well

☐ Transfer Facility

Problematic Special Waste according to Republic?

☐ Yes ☒ No

If yes, which one?

Approved by Special Waste Review Committee?

☐ Yes ☐ No ☒ Not Applicable

Precautions, Conditions or Limitations on Approval

The site must ensure that all pre-acceptance and verification analytical is performed in accordance with the site's permit requirements prior to acceptance and disposal of the profiled waste.

Special Waste Analyst Signature:

Holly Wilson

Date: 8/2/2021

Name (Printed): Holly Wilson

III. Facility Decision:

☒ Approved ☐ Rejected

Precautions, Conditions or Limitations on Approval

By signing below, the General Manager or Designee agrees that a fully executed Special Waste Service Agreement is on file for this profile and that the special waste file is complete.

General Manager or Designee:

Date: 8/2/2021

Name (Printed):

John Fros

Republic Industrial and Energy Solutions, LLC

28470 Citrin Dr, Romulus, MI 48174. Telephone 734 946 1000. Fax 734 946 1002

GENERATOR WASTE PROFILEProfile # **480-186631-1**

64402130502

GENERATOR INFORMATION

JD 7-30-21

Name: **Republic Services Inc** CECOS International, Inc. USEPA ID # **OHD 087 433 744**Facility Address: **Aber Road** SIC/NAICS Code: State Code: **562112**City: **Williamsburg** State: **Ohio** Zip Code: **45176**Contact: **Andrew Thompson** Title: **Environmental Manager** Phone: (**613**) **467-8459** Fax: (**613**) **724-3234****BILLING INFORMATION**☒ SAME AS ABOVE

Company Name: _____

Address: _____

City: _____ State: _____ Zip Code: _____

Attention: _____ Title: _____ Phone: () _____ Fax: () _____

WASTE INFORMATION

Name of Waste/Common Chemical Name:

CMI Leachate

Process Generating Waste (Please be specific, incomplete information may delay the approval process):

Produce by rain water percolating through layers of waste in the landfill.**USEPA / STATE WASTE IDENTIFICATION**

1. This waste is considered to be: ☐ Non Hazardous Liquid Industrial Waste ☒ Hazardous Waste
2. Regulated by TSCA? ☒ Yes ☒ No (PCBs, etc.) Answer is NO JD 7-30-21
3. List ALL Applicable Waste Codes: **F039**

PHYSICAL CHARACTERISTICS OF WASTE

Color: <input type="checkbox"/> White/Clear <input checked="" type="checkbox"/> Black/Brown <input type="checkbox"/> Other	Suspended Solids <input checked="" type="checkbox"/> 0-1 % <input type="checkbox"/> 3-5 % <input type="checkbox"/> 1-3 % <input type="checkbox"/> > 5% J.D. 8/2/21	Layers: <input type="checkbox"/> Multi layered <input type="checkbox"/> Bi-Layered <input checked="" type="checkbox"/> Single Phase	Specific Gravity: <input type="checkbox"/> <0.8 <input type="checkbox"/> 1.0 — 1.2 <input type="checkbox"/> 0.8 — 1.0 <input type="checkbox"/> 1.3 — 1.4 Exact / Other 0.9991
--	---	---	--

pH: ☐ NA ☐ < 2 ☐ 2 — 4 ☐ 4 — 6 ☐ 6 — 8 ☒ 8-10 ☐ 10 — 12.5 ☐ >12.5Liquid Flash Point: ☐ <73°F ☐ 73—100°F ☐ 101—140°F ☐ 141—200°F ☒ >200°F ☐ None ☐ Closed Cup ☐ Open CupVOC CONCENTRATION - **11.049** PPM (MUST BE COMPLETED)

TOTAL COMPOSITION OF WASTE - MUST BE EQUAL TO OR GREATER THAN 100% (1ST EACH CONSTITUENT <=> 1= 0.1%)

CONSTITUENT**MAX MIN****CONSTITUENT****MAX MIN**

Leachate	100	100	%			%
			%			%
			%			%

Metals: Indicate if this waste contains any of the following metals

If Generator knowledge-provide backup ☒ Lab Analysis ☐ Generator Knowledge

☐ TCLP ☐ TOTAL

	Not Present	Concentration	Not Present	Concentration					
PCB	<input checked="" type="checkbox"/>	0.00000305 ppm	Aromatic Amine	<input checked="" type="checkbox"/>	0.0097 ppm	Arsenic (As)	D004	<input checked="" type="checkbox"/>	<5 ppm
Dioxins	<input checked="" type="checkbox"/>	0.00000305 ppm	Pesticides	<input checked="" type="checkbox"/>	0.0097 ppm	Barium (Ba)	D005	<input checked="" type="checkbox"/>	<100 ppm
Cyanides Reactive	<input checked="" type="checkbox"/>	ppm	Rodenticides	<input checked="" type="checkbox"/>	ppm	Cadmium (Cd)	D006	<input checked="" type="checkbox"/>	<1 ppm
Cyanides Total	<input checked="" type="checkbox"/>	ppm	Fungicides	<input checked="" type="checkbox"/>	ppm	Chromium (Cr)	D007	<input checked="" type="checkbox"/>	<5 ppm
Sulfides Reactive	<input checked="" type="checkbox"/>	ppm				Lead (Pb)	D008	<input checked="" type="checkbox"/>	<5 ppm
Sulfides Total	<input checked="" type="checkbox"/>	ppm				Mercury (Hg)	D009	<input checked="" type="checkbox"/>	<0.2 ppm
						Selenium (Se)	D010	<input checked="" type="checkbox"/>	<1 ppm
						Silver (Ag)	D011	<input checked="" type="checkbox"/>	<5 ppm

TCLP Organics D012 — D043 above regulatory limits: Present ☐ Not Present ☒

IS WASTE ANY OF THE FOLLOWING?

At Least One Box Must Be Checked.

- ☐ Radioactive ☐ Water Reactive ☐ Oxidizer ☐ Shock Sensitive ☐ Reactive (other) ☐ DOT Explosives
☐ NIOSH Human-Positive Carcinogens ☐ NESHAP Wastes (Benzene, etc.) ☐ Biological ☒ None Apply

SHIPPING INFORMATION

1. Is this a DOT Hazardous Material (49CFR 172.101 & 173 Subpart D)? ☐ Yes ☒ No
2. Reportable Quantity (RQ) in pounds 1
3. DOT Shipping Name Hazardous Waste, liquid NOS Hazard Class 9 UN/NA NA3082
PG III ERG 171 Hazardous Constituents for "n.o.s." _____
4. Method of Shipment: ☒ Bulk Tanker ☐ Vac truck ☐ Rail Car ☐ Drums ☐ Totes
5. Number of Units to Ship Now 5,100 gal 6. Anticipated Volume / Units per Year: 86,000 gal or ☐ One Time
6. Special Handling Requirements including PPE: _____

CERTIFICATION STATEMENT

I hereby represent and warrant that I have personally examined and am familiar with the information contained and submitted in this and all attached documents. Based on my inquiry and personal knowledge of those individuals responsible for supplying or obtaining the information, the information contained herein is true, accurate, and complete to the best of my knowledge and belief. Furthermore, no material fact has been omitted as to make this information misleading. I understand that others may rely on this representation and warranty in the handling and processing of the waste material described herein.

If this box is checked ☐ I request Republic Industrial & Energy Solutions not to correct any inconsistencies. Any corrections Republic Industrial & Energy Solutions makes will be consistent with the results of the sample characterization and/or regulatory requirements.

Printed Name: Andrew Thompson

Title: Environmental Manager

Generator's Signature: Anchor Thompson

Date: 7/20/21

GENERATOR'S CHAIN OF CUSTODY RECORD INSTRUCTIONS: PLEASE collect a representative 1-quart sample of the waste described in the above referenced GENERATORS WASTE PROFILE REPORT using an appropriate container. A representative sample is one obtained using any of the applicable sampling methods cited in 40 CFR 261-Appendix 1. Fill in the sampling information in the spaces provided below. If you have problems obtaining a representative sample of your waste, please contact your Republic Industrial & Energy Solutions representative.

1. Grab 2. Discharge line
SAMPLING METHOD COLLECTION POINT
3. D. Kattwinkel, Environmental Technician, Republic Services, Inc.
SAMPLE COLLECTOR'S NAME, TITLE, EMPLOYER

4. Sample No. 21467-A Preservation: Yes ☒ No ☐

5. CHAIN OF CUSTODY Each person who handles the sample must sign below when the sample passes from one to another.

Relinquished by: (Signature)	Date	Time	Received by: (Signature)	Date	Time
<u>Anchor Thompson</u>	<u>7-20-21</u>	<u>1:45 PM</u>			

emi effluent



Republic Services

18500 N. Allied Way, Phoenix, AZ 85054

SPECIAL WASTE DEPARTMENT DECISION

Waste Profile #
64402130502

Expiration Date
7/9/2022

I. Decision Request:

☒ Initial

☐ Recertification

☐ Change

Disposal Facility: 6440 - Detroit Industrial Well

Generator Name: CECOS International Inc.

Generator Site Address: ABER ROAD

City: WILLIAMSBURG

County:

State: OH

Zip:

Name of Waste: CMI LEACHATE

Estimated Annual Volume: 86,000 Gallons

II. Special Waste Department Decision:

☒ Approved ☐ Rejected

Management Method(s):

☐ Landfill

☐ Solidification

☐ Bioremediation

☒ Deep Well

☐ Transfer Facility

Problematic Special Waste according to Republic?

☐ Yes ☒ No

If yes, which one?

Approved by Special Waste Review Committee?

☐ Yes ☐ No ☒ Not Applicable

Precautions, Conditions or Limitations on Approval

The site must ensure that all pre-acceptance and verification analytical is performed in accordance with the site's permit requirements prior to acceptance and disposal of the profiled waste.

Special Waste Analyst Signature:

Date: 8/2/2021

Name (Printed): Holly Wilson

III. Facility Decision:

☒ Approved ☐ Rejected

Precautions, Conditions or Limitations on Approval

By signing below, the General Manager or Designee agrees that a fully executed Special Waste Service Agreement is on file for this profile and that the special waste file is complete.

General Manager or Designee:

Date: 8/2/2021

Name (Printed):

JOHN FROST

Republic Industrial and Energy Solutions, LLC

28470 Citrin Dr, Romulus, MI 48174. Telephone 734 946 1000. Fax 734 946 1002

GENERATOR WASTE PROFILEProfile # **480-186631-1**

64402130502

GENERATOR INFORMATION

JD 7-30-21

Name: Republic Services Inc CECOS International, Inc. USEPA ID # OHD 087 433 744
Facility Address: Aber Road SIC/NAICS Code: 562112
City: Williamsburg State: Ohio Zip Code: 45176
Contact: Andrew Thompson Title: Environmental Manager Phone: (613) 467-8459 Fax: (613) 724-3234

BILLING INFORMATION☒ SAME AS ABOVE

Company Name: _____
Address: _____
City: _____ State: _____ Zip Code: _____
Attention: _____ Title: _____ Phone: () _____ Fax: () _____

WASTE INFORMATION

Name of Waste/Common Chemical Name:

CMI Leachate

Process Generating Waste (Please be specific, incomplete information may delay the approval process):

Produce by rain water percolating through layers of waste in the landfill.**USEPA / STATE WASTE IDENTIFICATION**

1. This waste is considered to be: ☐ Non Hazardous Liquid Industrial Waste ☒ Hazardous Waste
2. Regulated by TSCA? ☒ Yes ☐ No (PCBs, etc.) Answer is NO JD 7-30-21
3. List ALL Applicable Waste Codes: F039

PHYSICAL CHARACTERISTICS OF WASTE

Color: <input type="checkbox"/> White/Clear <input checked="" type="checkbox"/> Black/Brown <input type="checkbox"/> Other	Suspended Solids <input checked="" type="checkbox"/> 0-1 % <input type="checkbox"/> 3-5 % <input type="checkbox"/> 1-3 % <input type="checkbox"/> > 5% J.D. 8/2/21	Layers: <input type="checkbox"/> Multi layered <input type="checkbox"/> Bi-Layered <input checked="" type="checkbox"/> Single Phase	Specific Gravity: <input type="checkbox"/> <0.8 <input type="checkbox"/> 1.0 — 1.2 <input type="checkbox"/> 0.8 — 1.0 <input type="checkbox"/> 1.3 — 1.4 Exact / Other <u>0.9991</u>	
--	--	---	--	--

pH: ☐ NA ☐ < 2 ☐ 2 — 4 ☐ 4 — 6 ☐ 6 — 8 ☒ 8-10 ☐ 10 — 12.5 ☐ >12.5Liquid Flash Point: ☐ <73°F ☐ 73—100°F ☐ 101—140°F ☐ 141—200°F ☒ >200°F ☐ None ☐ Closed Cup ☐ Open CupVOC CONCENTRATION - 11.049 PPM (MUST BE COMPLETED)

TOTAL COMPOSITION OF WASTE - MUST BE EQUAL TO OR GREATER THAN 100% (1ST EACH CONSTITUENT <= 0.1%)

CONSTITUENT	MAX	MIN	CONSTITUENT	MAX	MIN
Leachate	100	100			%
					%
					%

Republic Industrial & Energy Solutions - 28470 Citrin Drive - Romulus - MI - 48174

Waste Profile - Page 2
Sample ID: 480-186631-1
Date Collected: 6-28-21

Metals: Indicate if this waste contains any of the following metals
If Generator knowledge-provide backup ☒ Lab Analysis ☐ Generator Knowledge

☐ TCLP ☐ TOTAL

	Not Present	Concentration	Not Present	Concentration					
PCB	<input checked="" type="checkbox"/>	0.00000305 ppm	Aromatic Amine	<input checked="" type="checkbox"/>	0.0097 ppm	Arsenic (As)	D004	<input checked="" type="checkbox"/>	<5 ppm
Dioxins	<input checked="" type="checkbox"/>	0.00000305 ppm	Pesticides	<input checked="" type="checkbox"/>	0.0097 ppm	Barium (Ba)	D005	<input checked="" type="checkbox"/>	<100 ppm
Cyanides Reactive	<input checked="" type="checkbox"/>	ppm	Rodenticides	<input checked="" type="checkbox"/>	ppm	Cadmium (Cd)	D006	<input checked="" type="checkbox"/>	<1 ppm
Cyanides Total	<input checked="" type="checkbox"/>	ppm	Fungicides	<input checked="" type="checkbox"/>	ppm	Chromium (Cr)	D007	<input checked="" type="checkbox"/>	<5 ppm
Sulfides Reactive	<input checked="" type="checkbox"/>	ppm				Lead (Pb)	D008	<input checked="" type="checkbox"/>	<5 ppm
Sulfides Total	<input checked="" type="checkbox"/>	ppm				Mercury (Hg)	D009	<input checked="" type="checkbox"/>	<0.2 ppm
						Selenium (Se)	D010	<input checked="" type="checkbox"/>	<1 ppm
						Silver (Ag)	D011	<input checked="" type="checkbox"/>	<5 ppm

TCLP Organics D012 — D043 above regulatory limits: Present ☐ Not Present ☒

IS WASTE ANY OF THE FOLLOWING?

At Least One Box Must Be Checked.

- ☐ Radioactive ☐ Water Reactive ☐ Oxidizer ☐ Shock Sensitive ☐ Reactive (other) ☐ DOT Explosives
☐ NIOSH Human-Positive Carcinogens ☐ NESHAP Wastes (Benzene, etc.) ☐ Biological ☒ None Apply

SHIPPING INFORMATION

1. Is this a DOT Hazardous Material (49CFR 172.101 & 173 Subpart D)? ☐ Yes ☒ No
2. Reportable Quantity (RQ) in pounds 1
3. DOT Shipping Name Hazardous Waste, liquid NOS Hazard Class 9 UN/NA NA3082
PG III ERG 171 Hazardous Constituents for "n.o.s." _____
4. Method of Shipment: ☒ Bulk Tanker ☐ Vac truck ☐ Rail Car ☐ Drums ☐ Totes
5. Number of Units to Ship Now 5,100 gal 6. Anticipated Volume / Units per Year: 86,000 gal or ☐ One Time
6. Special Handling Requirements including PPE: _____

CERTIFICATION STATEMENT

I hereby represent and warrant that I have personally examined and am familiar with the information contained and submitted in this and all attached documents. Based on my inquiry and personal knowledge of those individuals responsible for supplying or obtaining the information, the information contained herein is true, accurate, and complete to the best of my knowledge and belief. Furthermore, no material fact has been omitted as to make this information misleading. I understand that others may rely on this representation and warranty in the handling and processing of the waste material described herein.

If this box is checked ☐ I request Republic Industrial & Energy Solutions not to correct any inconsistencies. Any corrections Republic Industrial & Energy Solutions makes will be consistent with the results of the sample characterization and/or regulatory requirements.

Printed Name: Andrew Thompson

Title: Environmental Manager

Generator's Signature: Andrew Thompson

Date: 7/20/21

GENERATOR'S CHAIN OF CUSTODY RECORD INSTRUCTIONS: PLEASE collect a representative 1-quart sample of the waste described in the above referenced GENERATORS WASTE PROFILE REPORT using an appropriate container. A representative sample is one obtained using any of the applicable sampling methods cited in 40 CFR 261-Appendix 1. Fill in the sampling information in the spaces provided below. If you have problems obtaining a representative sample of your waste, please contact your Republic Industrial & Energy Solutions representative.

1. Grab 2. Discharge line
SAMPLING METHOD COLLECTION POINT
3. D. Kattwinkel, Environmental Technician, Republic Services, Inc.
SAMPLE COLLECTOR'S NAME, TITLE, EMPLOYER

4. Sample No. 21467-A Preservation: Yes ☒ No ☐

5. CHAIN OF CUSTODY Each person who handles the sample must sign below when the sample passes from one to another.

Relinquished by: (Signature)	Date	Time	Received by: (Signature)	Date	Time
<u>[Signature]</u>	<u>7-20-21</u>	<u>1:45 PM</u>			

emi effluent