

AVERAGE INJECTION RATE

Calculation of Average Injection Rate

CURRENT REPORTING YEAR 2014CURRENT REPORTING MONTH MAY

Date (month, year) of the first injection into either well at the Citrin Road Facility

NOVEMBER 2013

CURRENT MONTH (all volumes in gallons)

	Injected Waste	Injected Non-Waste	Total injected
MI-163-1W-C010 , Well #1-12			
Current Month	0	0	0
Since facility first injected			310,140
MI-163-1W-C011, Well #2-12			
Current Month	227,891	0	227,891
Since facility first injected			842,339
		Lifetime Combined	1,152,479

Conversion factors

365.25 days per year ÷ 12 months per year = 30.4375 days per month

30.4375 days per month × 1440 minutes per day = 43,830 minutes per month

CalculationsWhole number of months of injection 77 lifetime number of months of injection × 43,830 minutes/month= 306,810 minutes of injectionLifetime combined injected volume 1,152,479 ÷ 306,810 minutes of injection= 3.8 gpm average injection rate

WELL 1 DATA

SUMMARY OF OPERATING, MONITORING AND REPORTING REQUIREMENTS

Injection Well I

Month: May

Year: 2014

CHARACTERISTIC	LIMITATION	MINIMUM MONITORING FREQUENCY	MINIMUM REPORTING FREQUENCY	STATUS
Injection Pressure	765 psig maximum	continuous	monthly	795 psig
Annulus Injection Pressure	100 psig minimum	continuous	monthly	3 psig
Annulus/Tubing Diff	100 psig minimum above injection pressure	continuous	monthly	Graph attached
Injection Rate (Average both wells)	166 gpm	continuous	monthly	3.5 gpm
Injection Rate (Maximum instantaneous)	270 gpm	continuous	monthly	47 gpm
Sight Glass Level		continuous	monthly	Graph attached
Annulus Fluid Loss		monthly	monthly	200 gal
Cumulative Volume		daily	monthly	1757 gal
Temperature		6-hour intervals	monthly	Graph attached
Corrosion Monitoring		monthly	monthly	Report attached
Repair and Maintenance		NA	monthly	Log attached
Toxicity Characteristic List		annually	monthly	NA
Fingerprint Analysis		per load	monthly	Sheets attached
Chemical Composition and Physical Characteristics of Injected Oilfield Brine		annually	annually	NA
pH of Injected Fluids		continuous	monthly	Graph attached

Circle Chart Index

Environmental Geo-Technologies, LLC 28470 Citrin Drive Romulus, MI 48174

Chart Recorder #1

Channel #1

Blue Pen - Well 1 Injection Pressure

Channel #2

Red Pen - Well 1 Annulus Pressure

Channel #3

Green Pen - Well 1 Flow Rate

Channel #4

Black Pen - Well 1 Annulus Tank Level

Chart Recorder #2

Channel #1

Blue Pen - Well 2 Injection Pressure

Channel #2

Red Pen - Well 2 Annulus Pressure

Channel #3

Green Pen - Well 2 Flow Rate

Channel #4

Black Pen - Well 2 Annulus Tank Level

Chart Recorder #3

Channel #1

Blue Pen - Injection pH Well 1 & 2

Channel #2

Red Pen - Well 1 Monthly Volume

Channel #3

Green Pen - Well 2 Monthly Volume

Channel #4

Black Pen - Temperature

MEMORANDUM

Date: 5/29/14

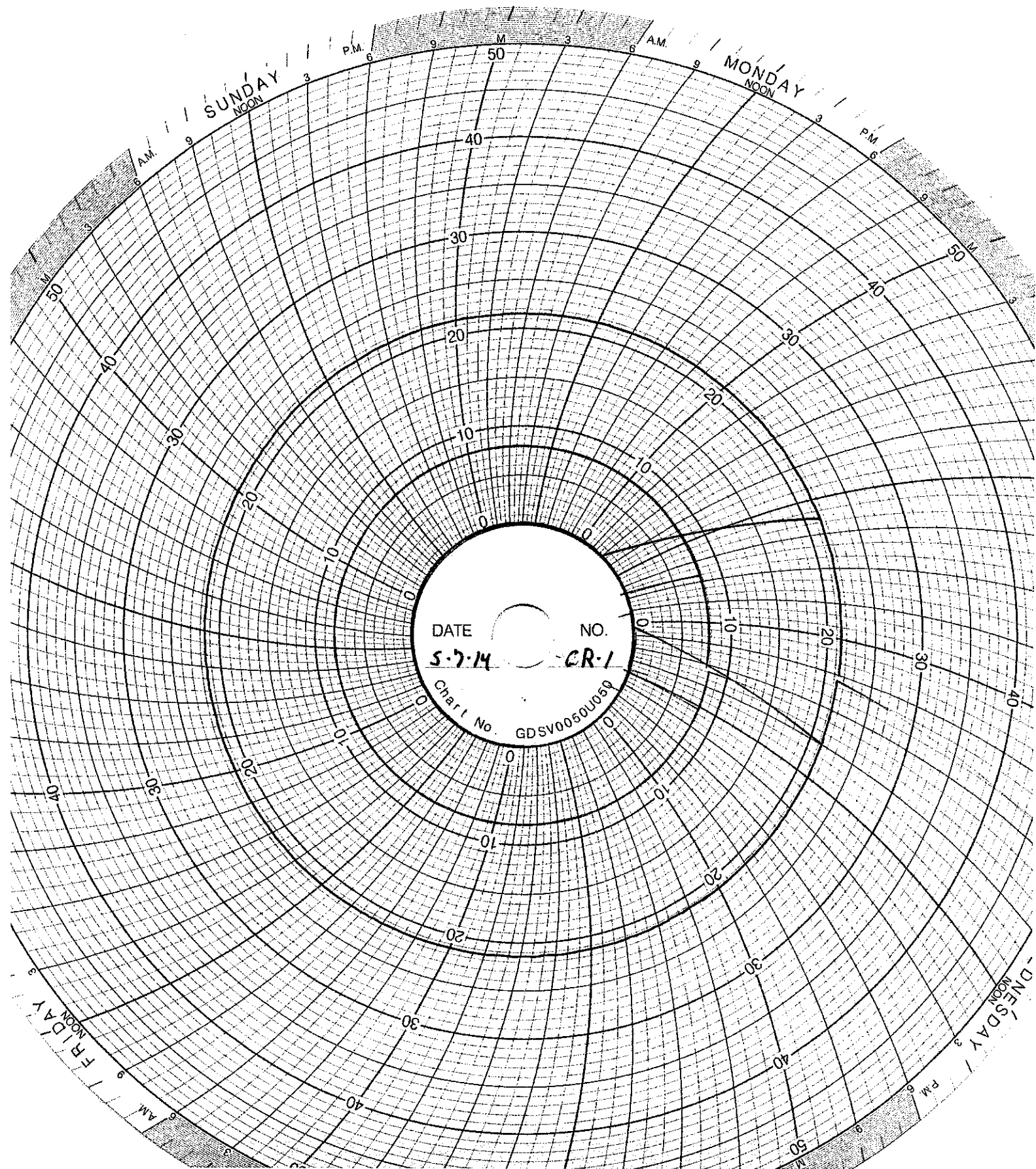
To: File

From: John Frost

RE: Differential pressure and injection pressure exceedance on wellhead # 1

At 3:37 pm today during an injection into well # 1 via an off line pumping system, the tubing differential pressure minimum limit of 100 psi was exceeded. Following at 3:58 pm the maximum injection pressure of 765 was exceeded during the same injection event. The off line pumping system is on a tanker truck that is accompanying a well rigging crew from Franklin Well Services (FWS), who is under contract with Subsurface Technology Inc. (Subsurface) to clean well # 1. This injection using the Franklin tanker truck is a test to check "well flow" after well cleaning had taken place. The exceedance of differential pressure and injection pressure was identified on the EGT gauges and triggered the EGT alarm system, however this operation performed by FWS did not show any exceedance on their gauges or operational logs.

During both of these alarm conditions an EGT deep well operator was present to witness the triggering of the alarm system and to stop injection operation. FWS has calibration records and operational logs to show their operations were within compliance conditions of our Underground Injection Control Permit No. MI-163-1W-C010.



DATE

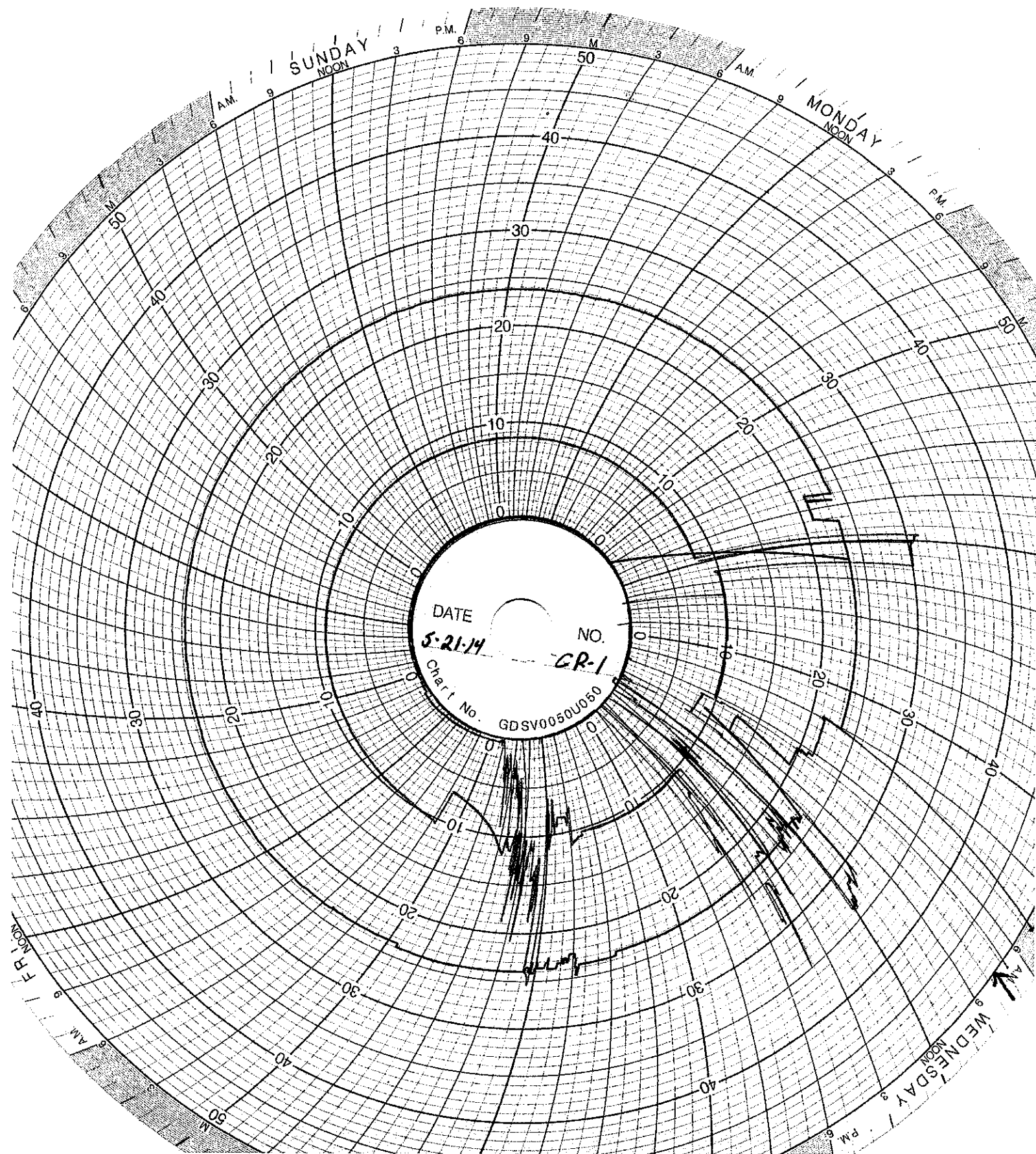
5-7-14

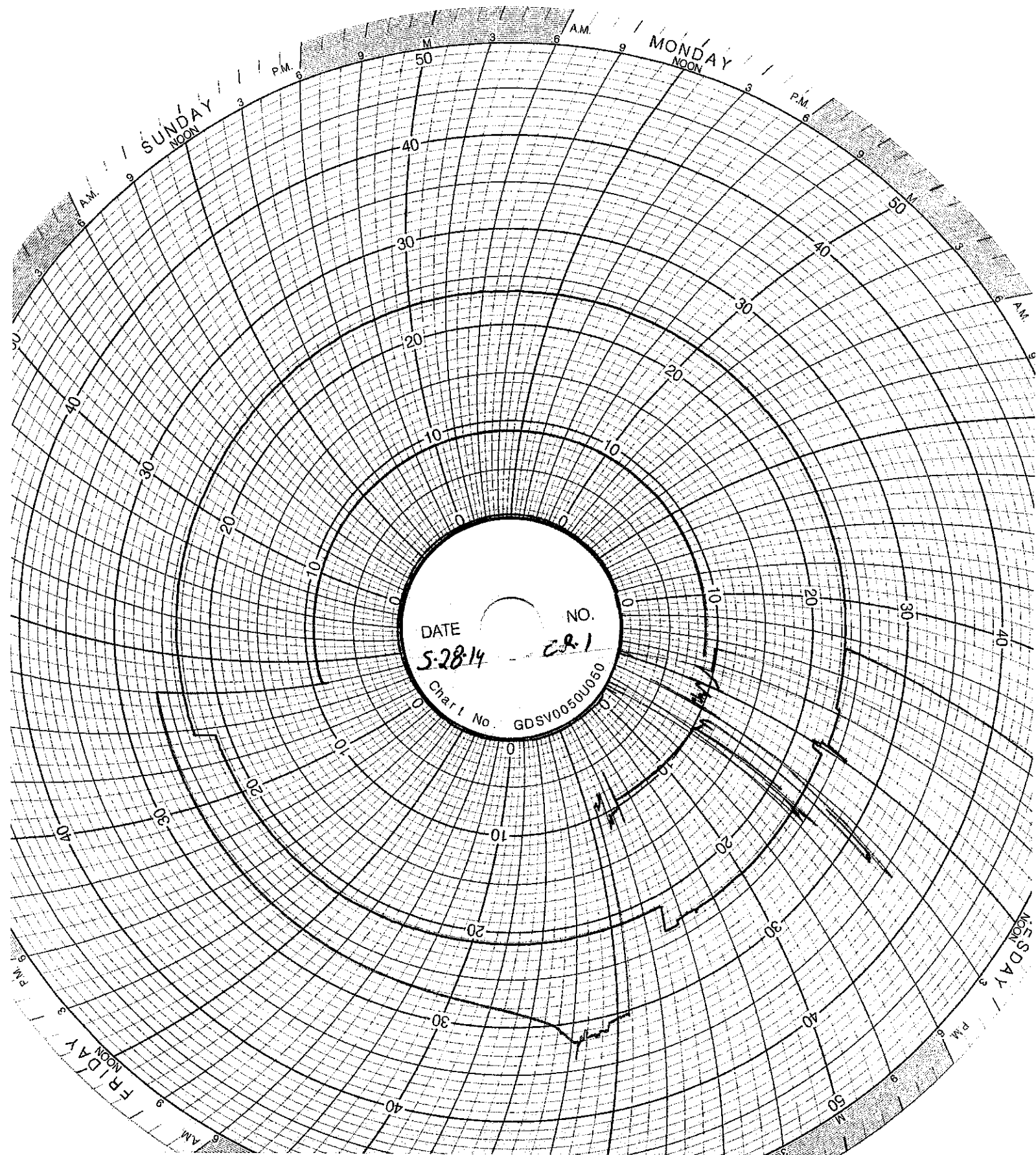
NO.

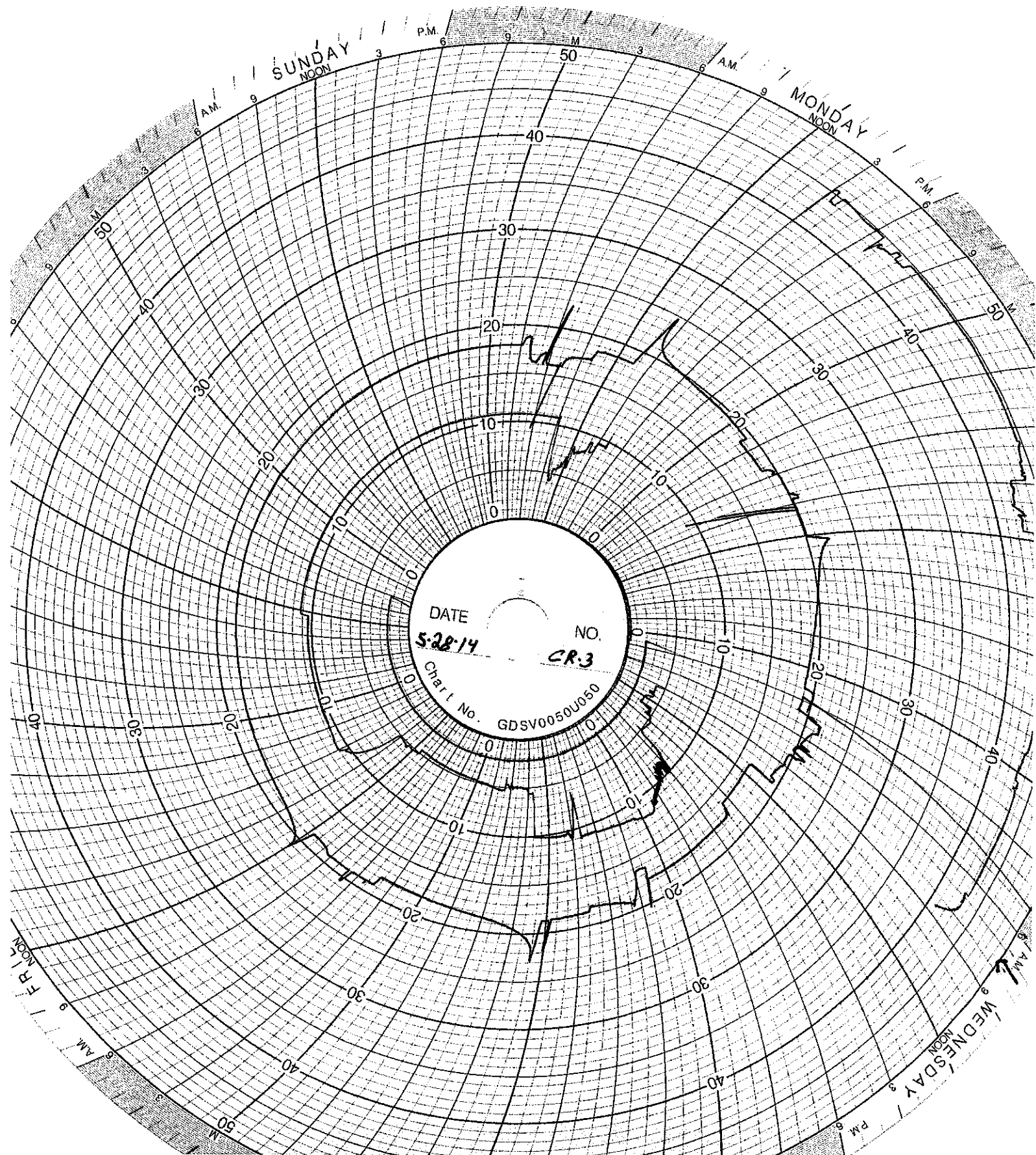
CR-1

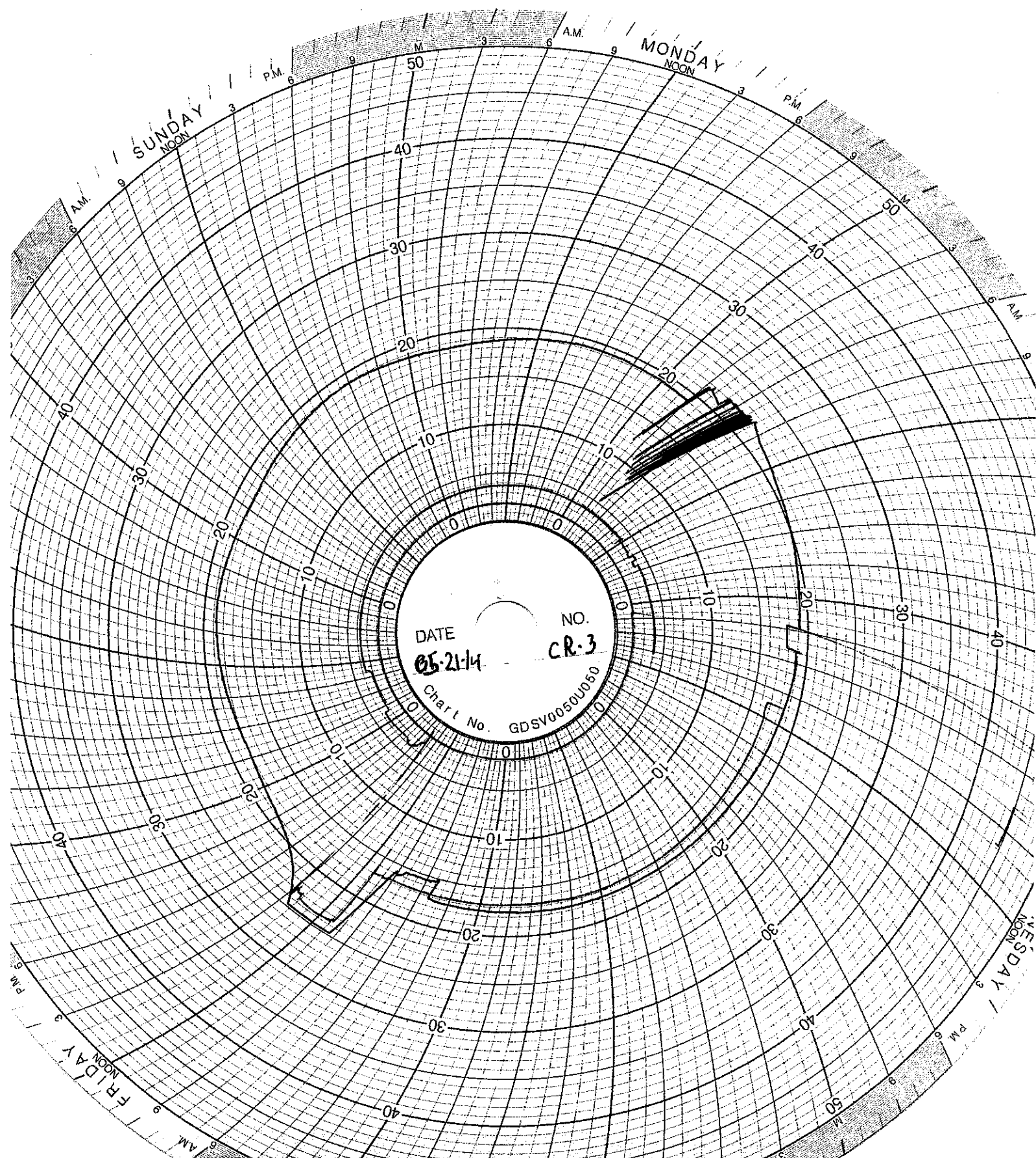
Chart No.

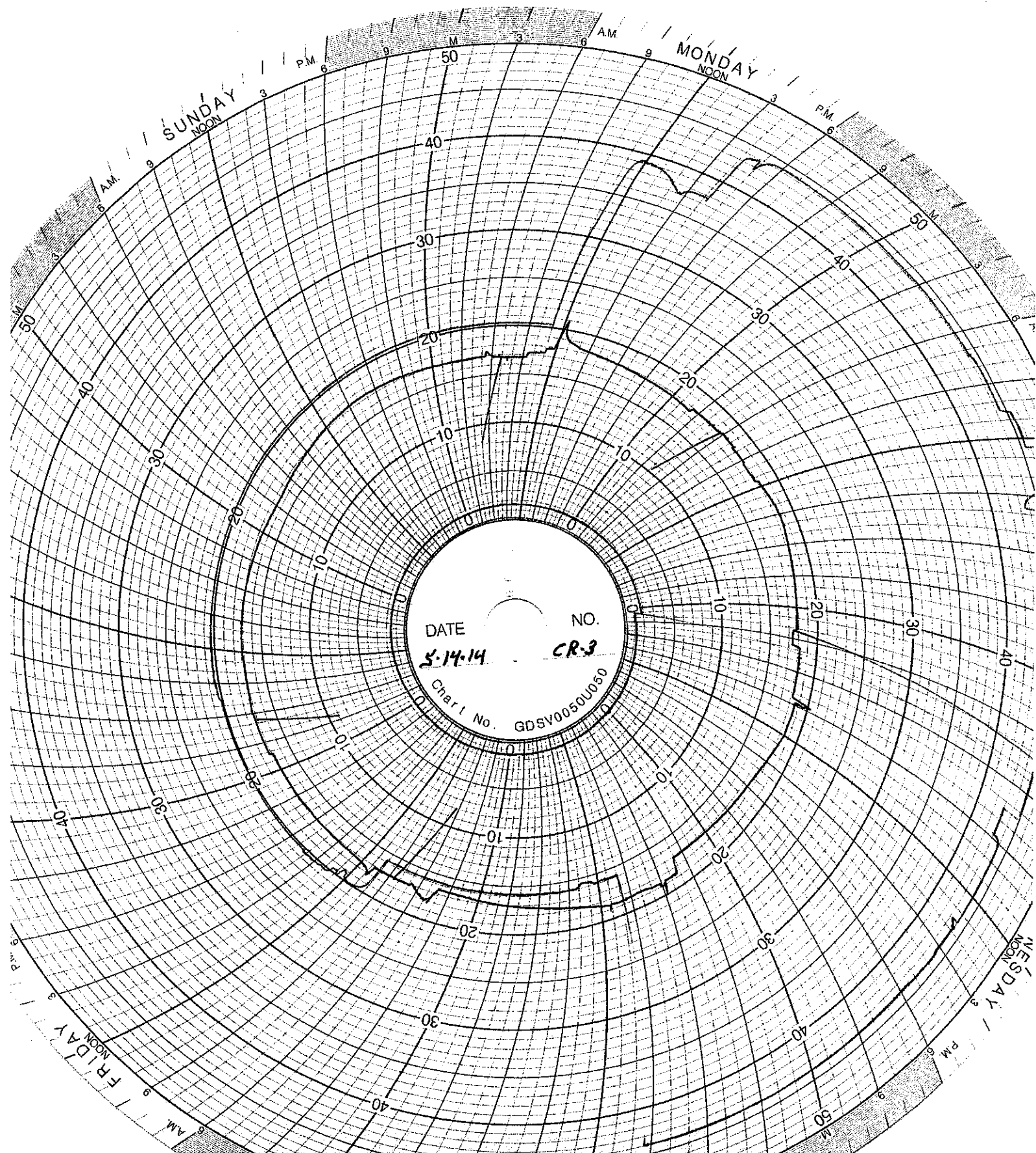
GDSV0050U050

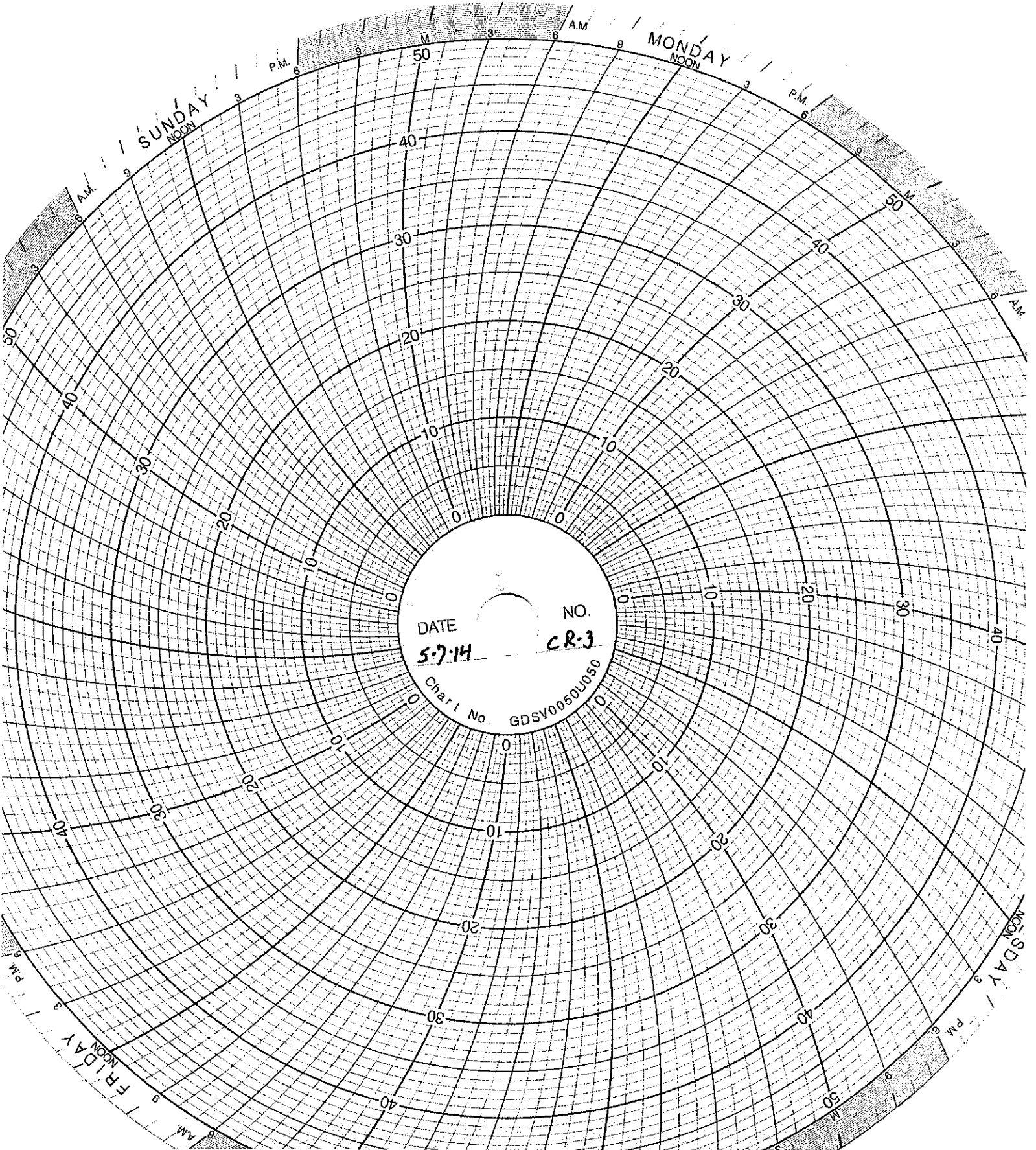












DATE
5-7-14

NO.
CR-3

Chart No. GDSV00501050

WELL 2 DATA

SUMMARY OF OPERATING, MONITORING AND REPORTING REQUIREMENTS

Injection Well II

Month: March

Year: 2014

CHARACTERISTIC	LIMITATION	MINIMUM MONITORING FREQUENCY	MINIMUM REPORTING FREQUENCY	STATUS
Injection Pressure	765 psig maximum	continuous	monthly	735 psig
Annulus Injection Pressure	100 psig minimum	continuous	monthly	181 psig
Annulus/Tubing Diff	100 psig minimum above injection pressure	continuous	monthly	Graph attached
Injection Rate (Average both wells)	166 gpm	continuous	monthly	3.5 gpm
Injection Rate (Maximum instantaneous)	270 gpm	continuous	monthly	148 gpm
Sight Glass Level		continuous	monthly	Graph attached
Annulus Fluid Loss		monthly	monthly	0.0 gal
Cumulative Volume		daily	monthly	227,891 gal
Temperature		6-hour intervals	monthly	Graph attached
Corrosion Monitoring		monthly	monthly	Report attached
Repair and Maintenance		NA	monthly	Log attached
Toxicity Characteristic List		annually	monthly	NA
Fingerprint Analysis		per load	monthly	Sheets attached
Chemical Composition and Physical Characteristics of Injected Oilfield Brine		annually	annually	NA
pH of Injected Fluids		continuous	monthly	Graph attached

Circle Chart Index

Environmental Geo-Technologies, LLC 28470 Citrin Drive Romulus, MI 48174

Chart Recorder #1

Channel #1

Blue Pen - Well 1 Injection Pressure

Channel #2

Red Pen - Well 1 Annulus Pressure

Channel #3

Green Pen - Well 1 Flow Rate

Channel #4

Black Pen - Well 1 Annulus Tank Level

Chart Recorder #2

Channel #1

Blue Pen - Well 2 Injection Pressure

Channel #2

Red Pen - Well 2 Annulus Pressure

Channel #3

Green Pen - Well 2 Flow Rate

Channel #4

Black Pen - Well 2 Annulus Tank Level

Chart Recorder #3

Channel #1

Blue Pen - Injection pH Well 1 & 2

Channel #2

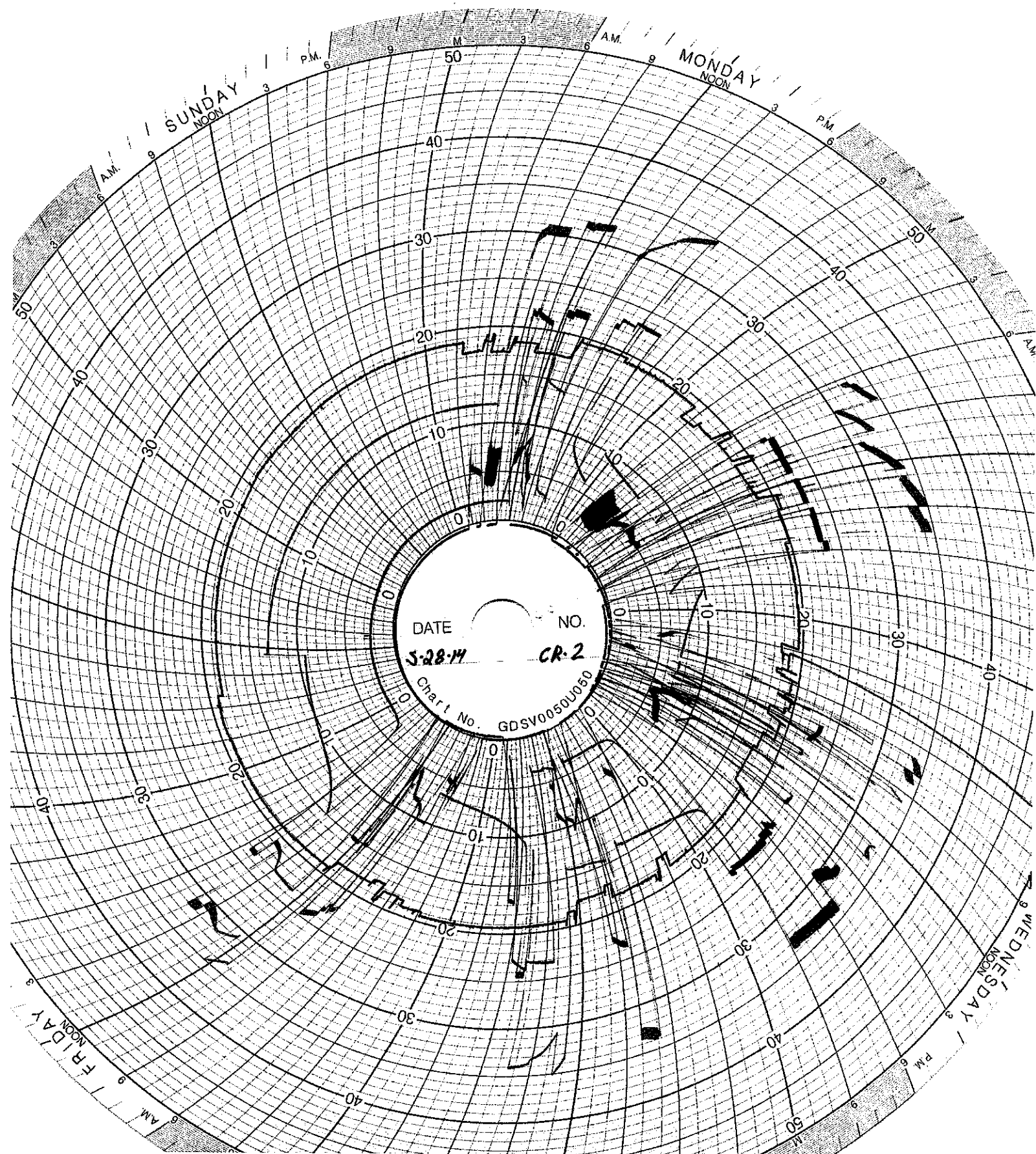
Red Pen - Well 1 Monthly Volume

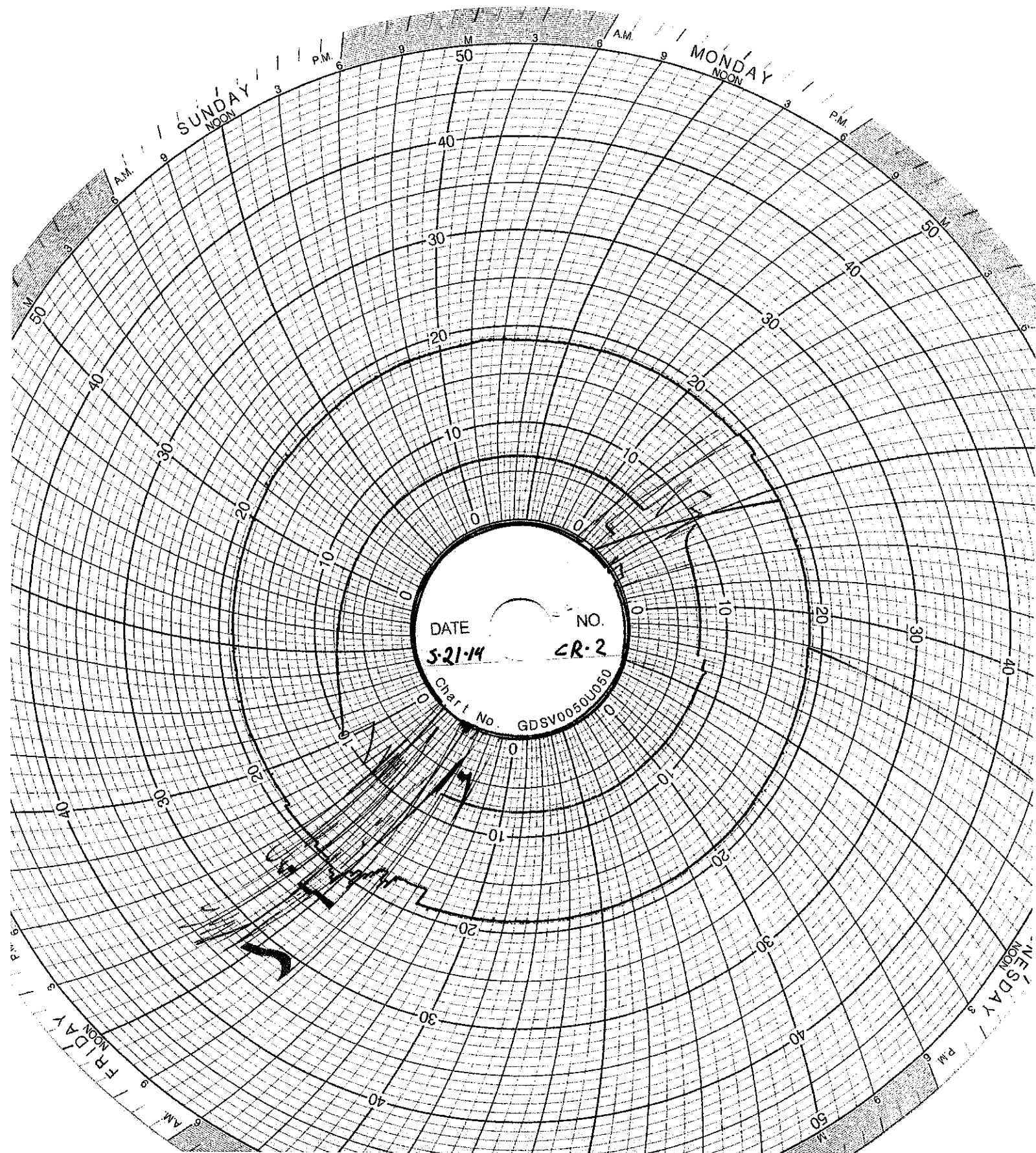
Channel #3

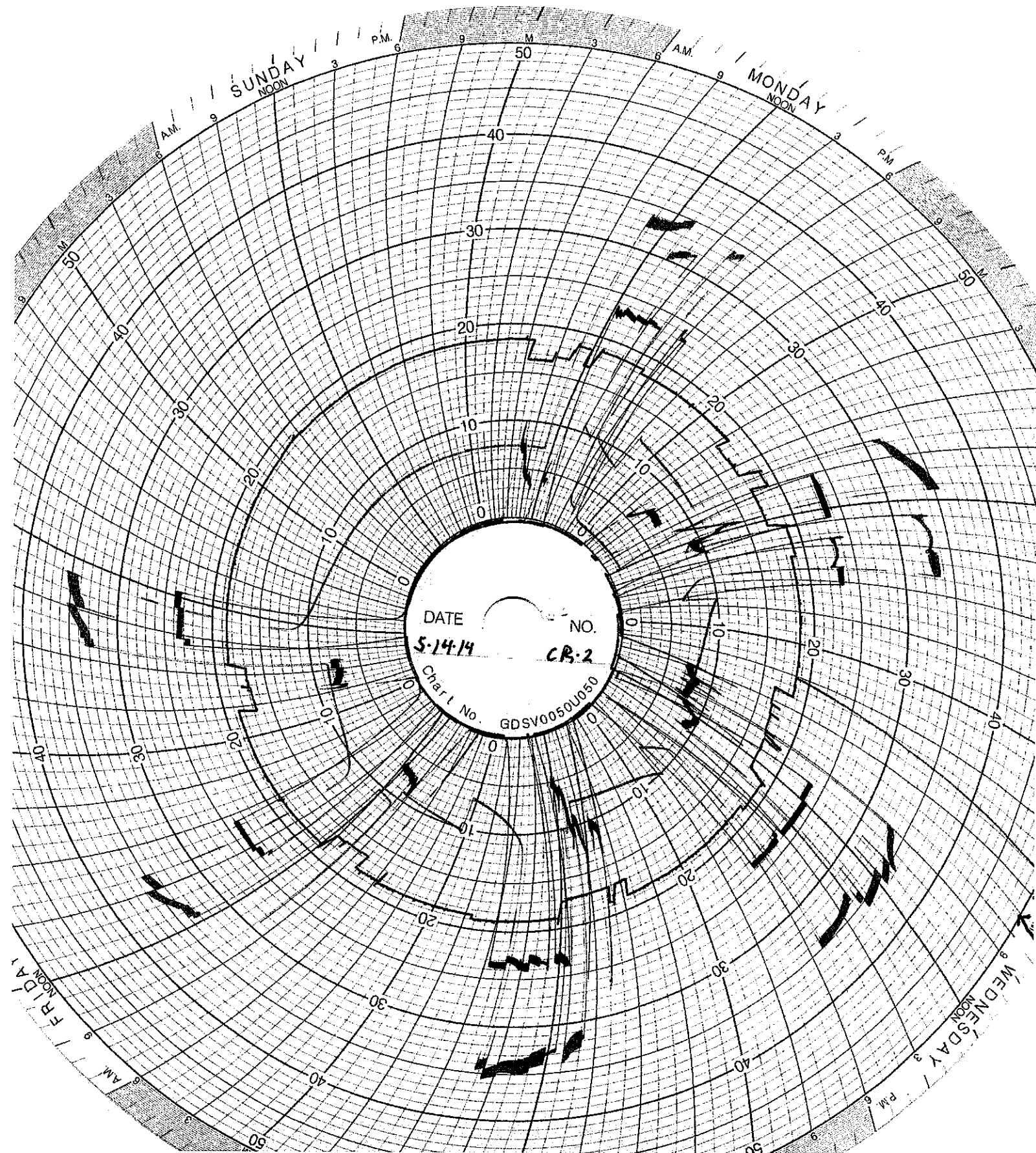
Green Pen - Well 2 Monthly Volume

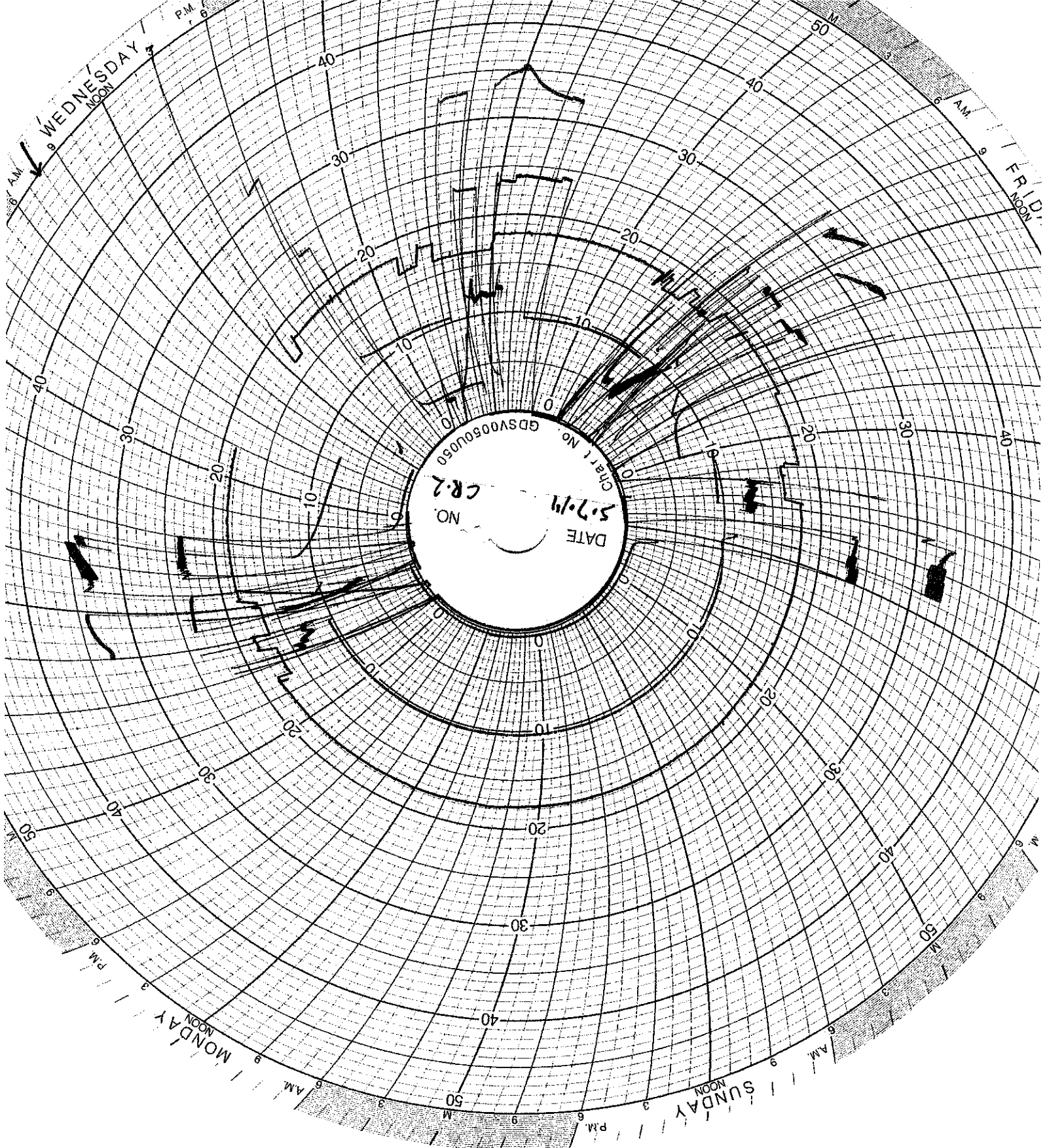
Channel #4

Black Pen - Temperature









DATE 5-7-14
NO. 0
GDSV0050U050

CORROSION MONITORING

CORROSION MONITORING COUPONS BASELINE VISUAL DESCRIPTION

November 4, 2013

Fiberglass

The fiberglass coupon is Red Box 2000 type and is 2-1/2 inches long by 1/2 inch wide and 1/4 inches thick. It is a dark orange (rust) in color with a glossy shine on one side a polished look on the opposite side and the cut edges look sanded.

Hastelloy

The hastelloy coupon is identified as C276 with serial number 1. The dimensions of the coupon are 3 inches long by 1/2 inch wide and 1/4 inch thick. The coupon is silver in color with a lightly sandblasted surface.

Stainless Steel

The stainless steel coupon is identified as 316L with serial number C1562. The dimensions of the coupon are 3 inches long by 1/2 inch wide and 1/4 inch thick. The coupon is silver in color with a lightly sandblasted surface.

Ghesquiere Plastic Testing, Inc.

20450 HARPER AVENUE
HARPER WOODS, MI 48225
PHONE (313) 885-3535
FAX (313) 885-1771

Report Date: November 15, 2013
Test Date: October 15 - November 14, 2013

Report #1310-77651
Performed for:
Environmental Geo-Technologies
28470 Citrin Drive
Romulus, MI 48174

Attention: Mr. Don Anderson

WORK REQUESTED:

Perform Barcol Hardness test on sample submitted.

DESCRIPTION OF SAMPLE:

Sample submitted was identified as a fiberglass test coupon.

(P. O. #Credit Card).

WORK PERFORMED:

Test specimen was prepared as necessary and conditioned for a minimum of 24 hours at standard laboratory conditions prior to testing.

Barcol Hardness test was performed in accordance with the procedures of ASTM D2583-13. One specimen was tested.

RESULTS:

The following determination was made based upon the above test:

BARCOL HARDNESS

Hardness

Specimen 1	90
------------	----

Specimen is being returned with this report for further evaluation.

Ghesquiere Plastic Testing, Inc.


M. W. Ghesquiere
President

MWG/kni

Ghesquiere Plastic Testing, Inc.

20450 HARPER AVENUE
HARPER WOODS, MI 48225
PHONE (313) 885-3535
FAX (313) 885-1771

Report Date: February 17, 2014
Test Date: February 14 - 17, 2014

Report #1402-78036
Performed for:
Environmental Geo-Technologies
28470 Citrin Drive
Romulus, MI 48174

Attention: Mr. Don Anderson

WORK REQUESTED:

Perform Barcol Hardness test on sample submitted.

DESCRIPTION OF SAMPLE:

Sample submitted was identified as a fiberglass test coupon.

(P. O. #Credit Card).

WORK PERFORMED:

Test specimen was prepared as necessary and conditioned for a minimum of 24 hours at standard laboratory conditions prior to testing.

Barcol Hardness test was performed in accordance with the procedures of ASTM D2583-13. One specimen was tested.

RESULTS:

The following determination was made based upon the above test:

BARCOL HARDNESS

Hardness

Specimen 1, 90

Specimen was returned to the client on February 17, 2014.

Ghesquiere Plastic Testing, Inc.

M. W. Ghesquiere
President

MWG/dm

C276

1

Hastelloy Coupon

ID: C267 (1)

Date: 08/06/2013

Wt.: 13.330 Grams

Prior to Waste Exposure

316L
C1562

Stainless Steel Coupon

ID: 316L / C1562

Date: 08/06/2013

Wt.: 10.848 grams

Prior to Waste Exposure

Fiberglass Coupon

Date: 08/06/2013

Wt.: 7.309 Grams

Prior to Waste Exposure

5/30/14

Coupled Weights

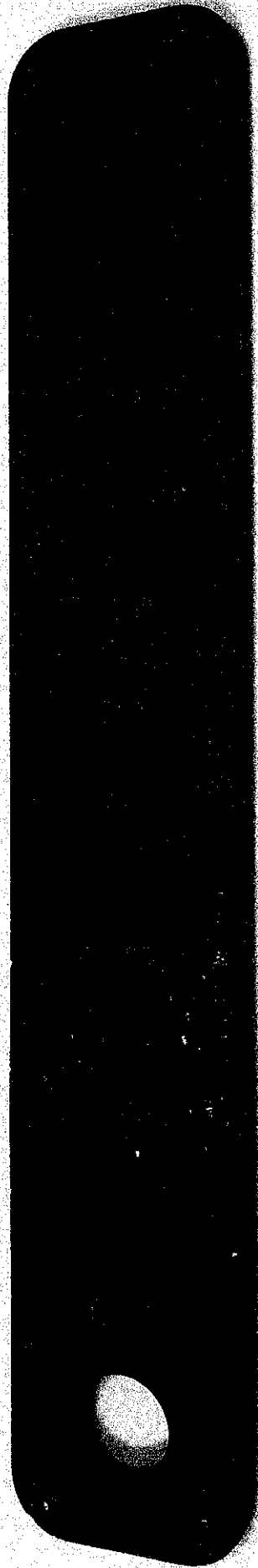
Fiberglass → 7.226g

2

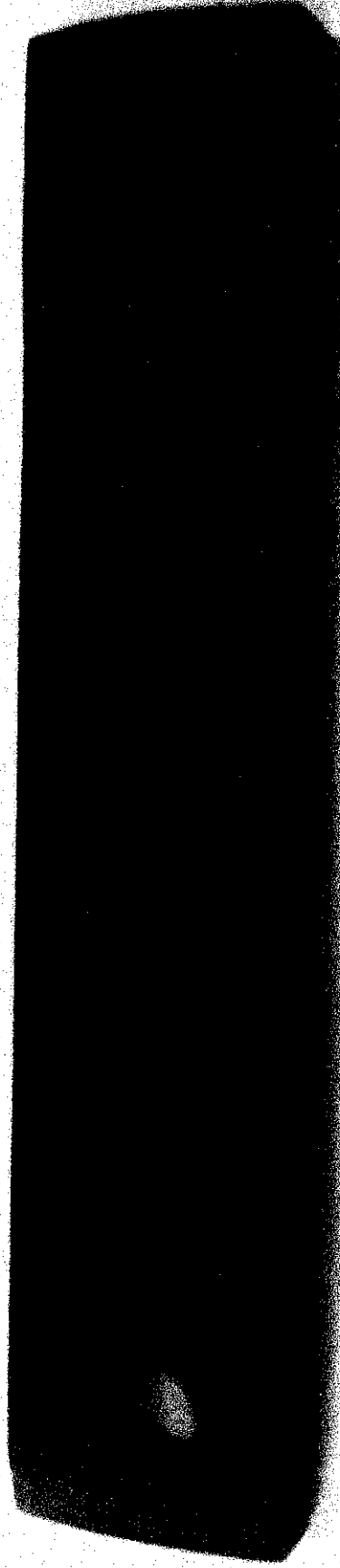
Q276 / 1 → 13.328g

C1562 / 316 L → 10.818g

2



5/30/2014 STAINLESS STEEL



5/30/2014 FIBERGLASS



5/30/2014 HASTLEY

CORROSION MONITORING COUPON VISUAL DESCRIPTION

May 30, 2014

Fiberglass

No pitting or cracking present on this coupon.

Hastelloy

No pitting or cracking present on this coupon.

Stainless Steel

There is some minor pitting but stainless steel is not part of the EGT well construction..

CORROSION MONITORING PLAN
COUPON SUMMARY

Date	Hastelloy	Stainless Steel	Fiberglass	
	(C267)	(316L)	(Redbox)	
12/19/2013	13.330 g	10.848 g	7.309 g	Initial Mass @ start up
2/21/2014	13.329 g	10.846 g	7.306 g	
3/10/2014	13.327 g	10.845 g	7.300 g	
4/18/2014	13.324 g	10.841 g	7.272 g	
5/30/2014	13.328 g	10.818 g	7.226 g	

MAINTENANCE LOG

UIC Monthly Maintenance Log

5/12/2014	Pipe welding well 2	The flange on the injection line, on the well side of the 3 inch check valve had a pin hole leak that was welded by Lee Contracting.
5/13/2014	Pipe welding well 2	The flange on the injection line, on the pump side of the 3 inch check valve had a pin hole leak that was welded by Lee Contracting.
5/20-22/2014	Cleaning of well 1	Subsurface Group was contracted to clean well 1.
5/21/2014	Tightened flange on annulus pipeline supplying well 1	A leaking flange caused an exceedance of the minimum differential pressure limit of 100 psi on well 1. The flange bolts were tightened to eliminate the leak and the annulus pressure was restored to normal operations. The EPA and DEQ were notified.
5/21/2014	Filled annulus storage on well 1	The annulus tank on well 1 was fill with 215 gallons of diesel fuel.
5/28/2014	Welded flange on the injection line of well 1	Welded 2000 psi flange to the injection line that mounts to the wellhead of well 1.
5/28-30/2014	Cleaning of well 1 continued	Subsurface Group was contracted to clean well 1.

MEMORANDUM

Date: 5/21/14

To: File

From: John Frost

RE: Annulus pressure drop from loose flange on wellhead # I

At 1:30 pm today during an injection into well # I there was a malfunction in the annulus system which resulted in a temporary loss of annulus pressure that exceeded the minimum differential pressure of 100 psi. This pressure loss was witnessed as it occurred by a deep well operator, and the injection was immediately halted for investigation. A spray of diesel fuel was found to be coming from a bolted flange above ground within secondary containment inside the wellhead # I building. The annulus pump emergency shut off switch was pressed to de-energize the annulus pump, and the valve was closed from the diesel fuel supply tank to the wellhead.

The flange that caused the pressure loss was found to have two loose bolts. Immediately these bolts were properly tightened and 10 gallons of diesel fuel were pumped into the diesel fuel supply tank so that the annulus system could be turned back on and pressurized. At 3:06 pm the annulus system on wellhead # I was tested by pressurizing to 303 psi without any additional fuel released by the tightened flange. The diesel fuel tank was then filled to 24 inches, which is the standard fill level, and the annulus system was pressurized to 851 psi and was able to maintain integrity.

**INJECTION
FINGERPRINTS**

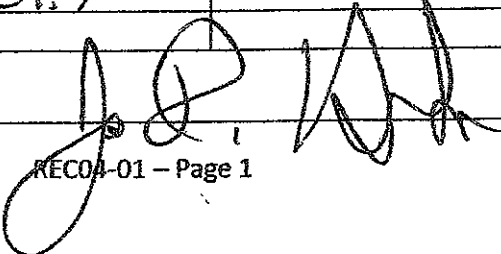
FINGERPRINT FORM

ENVIRONMENTAL GEO-TECHNOLOGIES, LLC.

RECEIVING & APPROVAL FORM

RECEIVING INFORMATION	
Date	5/1/14
Receiving ID#	105011401
Manifest# Line:	
Land Ban Cert included	Yes No
EGT Approval #	
Generator	
Client	
Transporter	
Time in	
Time out	
Received by	J.H.
Sampled by	D.H.

COPY

LAB INFORMATION:		Oilfield Brines Only:	
All Waste Shipments:			
Compatible? (RT#)	Yes No	Barium	
PCBs (ppm)(Oily Waste Only)?		Calcium	
TOC (ppm)(CC Waste Only)?		Total Iron	
Flash Point (°F)	> 140	Magnesium	
pH (S.U.)	10.3	Sodium Chloride	
Cyanides? (mg/L)		Bicarbonate	
Sulfides? (ppm)		Carbonate	
Specific Gravity	1.13	TDS	6.47
Physical Description		Resistivity	
Stream Consistency	Yes No	Sulfate	
Oil in Sample	Yes No		
Temperature	69°F		
Conductivity	132.9 mS		
% Solids	21.7		
Turbidity	Yes No		
Color (visual)			
TSS (%)	21.7		
Radiation Screen (as needed)			
Lab Signature			

FINGERPRINT FORM

ENVIRONMENTAL GEO-TECHNOLOGIES, LLC.

RECEIVING & APPROVAL FORM

RECEIVING INFORMATION

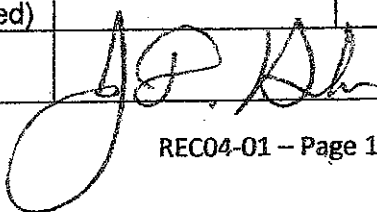
Date	5/2/14
Receiving ID#	105021401
Manifest# Line:	
Land Ban Cert included	Yes No
EGT Approval #	A
Generator	EGT
Client	
Transporter	
Time in	
Time out	
Received by	J.H.
Sampled by	D.H.

COPY

LAB INFORMATION:

All Waste Shipments:

Oilfield Brines Only:

Compatible? (RT#)	Yes No	Barium	
PCBs (ppm)(Oily Waste Only)?		Calcium	
TOC (ppm)(CC Waste Only)?		Total Iron	
Flash Point (°F)	140	Magnesium	
pH (S.U.)	9.1	Sodium Chloride	
Cyanides? (mg/L)		Bicarbonate	
Sulfides? (ppm)		Carbonate	
Specific Gravity	1.14	TDS	7.37.
Physical Description		Resistivity	
Stream Consistency	Yes No	Sulfate	
Oil in Sample	Yes No		
Temperature	69°F		
Conductivity	143.9 mS		
% Solids	7.4		
Turbidity	Yes No		
Color (visual)			
TSS (%)	0.1		
Radiation Screen (as needed)			
Lab Signature			

FINGERPRINT FORM

ENVIRONMENTAL GEO-TECHNOLOGIES, LLC.

RECEIVING & APPROVAL FORM

RECEIVING INFORMATION

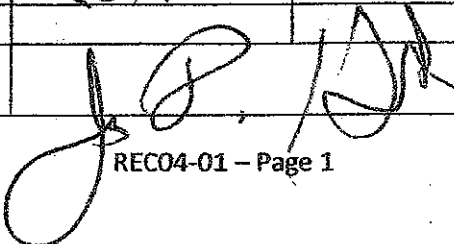
Date	05/21/14
Receiving ID#	I05021402
Manifest# Line:	
Land Ban Cert included	Yes No
EGT Approval #	A
Generator	EGT
Client	
Transporter	
Time in	
Time out	
Received by	J.H.
Sampled by	DA

COPY

LAB INFORMATION:

All Waste Shipments:

Oilfield Brines Only:

Compatible? (RT#)	<input checked="" type="radio"/> Yes <input type="radio"/> No	Barium	
PCBs (ppm)(Oily Waste Only)?		Calcium	
TOC (ppm)(CC Waste Only)?		Total Iron	
Flash Point (°F)	> 140	Magnesium	
pH (S.U.)	12.1	Sodium Chloride	
Cyanides? (mg/L)		Bicarbonate	
Sulfides? (ppm)		Carbonate	
Specific Gravity	1.30	TDS	11.1
Physical Description		Resistivity	
Stream Consistency	Yes No	Sulfate	
Oil in Sample	Yes No		
Temperature	66°F		
Conductivity	2219 µS		
% Solids			
Turbidity	Yes No		
Color (visual)			
TSS (%)	< 0.1		
Radiation Screen (as needed)			
Lab Signature			

FINGERPRINT FORM

ENVIRONMENTAL GEO-TECHNOLOGIES, LLC.

RECEIVING & APPROVAL FORM

RECEIVING INFORMATION

Date	05/03/14
Receiving ID#	105031401
Manifest# Line:	
Land Ban Cert included	Yes No
EGT Approval #	A
Generator	EGT
Client	
Transporter	
Time in	
Time out	
Received by	J.H.
Sampled by	D.H.

COPY

LAB INFORMATION:

All Waste Shipments:

Oilfield Brines Only:

Compatible? (RT#)	Yes No	Barium	
PCBs (ppm)(Oily Waste Only)?		Calcium	
TOC (ppm)(CC Waste Only)?		Total Iron	
Flash Point (°F)	> 140	Magnesium	
pH (S.U.)	5.7	Sodium Chloride	
Cyanides? (mg/L)		Bicarbonate	
Sulfides? (ppm)		Carbonate	
Specific Gravity	1.09	TDS	6.82
Physical Description		Resistivity	
Stream Consistency	Yes No	Sulfate	
Oil in Sample	Yes No		
Temperature	63°F		
Conductivity	135.0 mS		
% Solids	< 0.1		
Turbidity	Yes No		
Color (visual)			
TSS (%)	< 0.1		
Radiation Screen (as needed)			
Lab Signature	J.P. Dr.		

FINGERPRINT FORM

ENVIRONMENTAL GEO-TECHNOLOGIES, LLC.

RECEIVING & APPROVAL FORM

RECEIVING INFORMATION

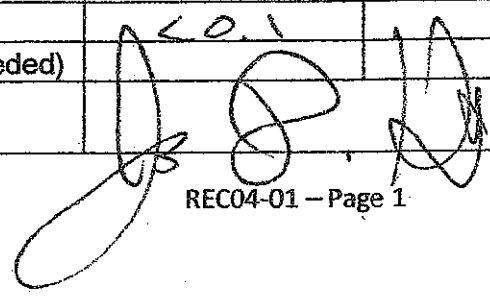
Date	05/03/14
Receiving ID#	105031402
Manifest# Line:	
Land Ban Cert included	Yes No
EGT Approval #	A
Generator	EGT
Client	
Transporter	
Time in	
Time out	
Received by	J.H.
Sampled by	DAH

COPY

LAB INFORMATION:

All Waste Shipments:

Oilfield Brines Only:

Compatible? (RT#)	Yes No	Barium	
PCBs (ppm)(Oily Waste Only)?		Calcium	
TOC (ppm)(CC Waste Only)?		Total Iron	
Flash Point (°F)	140	Magnesium	
pH (S.U.)	6.3	Sodium Chloride	
Cyanides? (mg/L)		Bicarbonate	
Sulfides? (ppm)		Carbonate	
Specific Gravity	1.18	TDS	9.67
Physical Description		Resistivity	
Stream Consistency	Yes No	Sulfate	
Oil in Sample	Yes No		
Temperature	63°F		
Conductivity	1908 uS		
% Solids	< 0.1		
Turbidity	Yes No		
Color (visual)			
TSS (%)	< 0.1		
Radiation Screen (as needed)			
Lab Signature			

FINGERPRINT FORM

ENVIRONMENTAL GEO-TECHNOLOGIES, LLC.

RECEIVING & APPROVAL FORM

RECEIVING INFORMATION

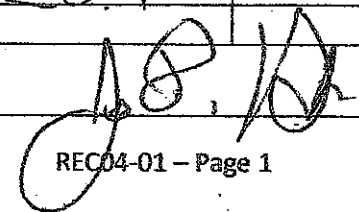
Date	05/05/14
Receiving ID#	10505/401
Manifest# Line:	
Land Ban Cert included	Yes No
EGT Approval #	A
Generator	EGT
Client	
Transporter	
Time in	
Time out	
Received by	J.H.
Sampled by	OM

COPY

LAB INFORMATION:

All Waste Shipments:

Oilfield Brines Only:

Compatible? (RT#)	<input checked="" type="radio"/> Yes <input type="radio"/> No	Barium	
PCBs (ppm)(Oily Waste Only)?		Calcium	
TOC (ppm)(CC Waste Only)?		Total Iron	
Flash Point (°F)	140	Magnesium	
pH (S.U.)	10.3	Sodium Chloride	
Cyanides? (mg/L)		Bicarbonate	
Sulfides? (ppm)		Carbonate	
Specific Gravity	1.06	TDS	3.97
Physical Description		Resistivity	
Stream Consistency	Yes No	Sulfate	
Oil in Sample	Yes No		
Temperature	66°F		
Conductivity	77.1 mS		
% Solids	20.1		
Turbidity	Yes No		
Color (visual)			
TSS (%)	20.1		
Radiation Screen (as needed)			
Lab Signature			

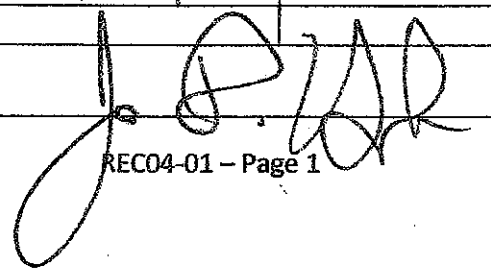
FINGERPRINT FORM

ENVIRONMENTAL GEO-TECHNOLOGIES, LLC.

RECEIVING & APPROVAL FORM

RECEIVING INFORMATION	
Date	5/5/14
Receiving ID#	105051402
Manifest# Line:	
Land Ban Cert included	Yes No
EGT Approval #	A
Generator	EGT
Client	
Transporter	
Time in	
Time out	
Received by	J.H.
Sampled by	DAR

COPY

LAB INFORMATION:		Oilfield Brines Only:	
All Waste Shipments:			
Compatible? (RT#)	Yes No	Barium	
PCBs (ppm)(Oily Waste Only)?		Calcium	
TOC (ppm)(CC Waste Only)?		Total Iron	
Flash Point (°F)	> 140	Magnesium	
pH (S.U.)	10.5	Sodium Chloride	
Cyanides? (mg/L)		Bicarbonate	
Sulfides? (ppm)		Carbonate	
Specific Gravity	1.05	TDS	2.37
Physical Description		Resistivity	
Stream Consistency	Yes No	Sulfate	
Oil in Sample	Yes No		
Temperature	67°F		
Conductivity	45.9 mS		
% Solids	< 0.1		
Turbidity	Yes No		
Color (visual)			
TSS (%)	< 0.1		
Radiation Screen (as needed)			
Lab Signature			

FINGERPRINT FORM

ENVIRONMENTAL GEO-TECHNOLOGIES, LLC.

RECEIVING & APPROVAL FORM

RECEIVING INFORMATION

Date	5/6/14
Receiving ID#	105061401
Manifest# Line:	
Land Ban Cert included	Yes No
EGT Approval #	A
Generator	EGT
Client	
Transporter	
Time in	
Time out	
Received by	J. P. H.
Sampled by	D. H.

COPY

LAB INFORMATION:

All Waste Shipments:

Oilfield Brines Only:

Compatible? (RT#)	Yes No	Barium	
PCBs (ppm)(Oily Waste Only)?		Calcium	
TOC (ppm)(CC Waste Only)?		Total Iron	
Flash Point (°F)	> 140	Magnesium	
pH (S.U.)	12.6	Sodium Chloride	
Cyanides? (mg/L)		Bicarbonate	
Sulfides? (ppm)		Carbonate	
Specific Gravity	1.18	TDS	9.67
Physical Description		Resistivity	
Stream Consistency	Yes No	Sulfate	
Oil in Sample	Yes No		
Temperature	63°F		
Conductivity	192.7 mS		
% Solids	<0.1		
Turbidity	Yes No		
Color (visual)			
TSS (%)	<0.1		
Radiation Screen (as needed)			
Lab Signature	J. P. H.		

FINGERPRINT FORM

ENVIRONMENTAL GEO-TECHNOLOGIES, LLC.

RECEIVING & APPROVAL FORM

RECEIVING INFORMATION

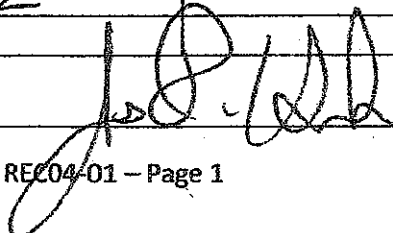
Date	5/6/14
Receiving ID#	E 85061402
Manifest# Line:	
Land Ban Cert included	Yes No
EGT Approval #	A
Generator	EGT
Client	
Transporter	
Time in	
Time out	
Received by	J.F.
Sampled by	D.H.

COPY

LAB INFORMATION:

All Waste Shipments:

Oilfield Brines Only:

Compatible? (RT#)	Yes No	Barium	
PCBs (ppm)(Oily Waste Only)?		Calcium	
TOC (ppm)(CC Waste Only)?		Total Iron	
Flash Point (°F)	140	Magnesium	
pH (S.U.)	11.8	Sodium Chloride	
Cyanides? (mg/L)		Bicarbonate	
Sulfides? (ppm)		Carbonate	
Specific Gravity	1.07	TDS	4.67
Physical Description		Resistivity	
Stream Consistency	Yes No	Sulfate	
Oil in Sample	Yes No		
Temperature	68°F		
Conductivity	92.8 mS		
% Solids	0.2		
Turbidity	Yes No		
Color (visual)			
TSS (%)	0.2		
Radiation Screen (as needed)			
Lab Signature			

FINGERPRINT FORM

ENVIRONMENTAL GEO-TECHNOLOGIES, LLC.

RECEIVING & APPROVAL FORM

RECEIVING INFORMATION	
Date	5/7/14
Receiving ID#	105071401
Manifest# Line:	
Land Ban Cert included	Yes No
EGT Approval #	
Generator	
Client	
Transporter	
Time in	
Time out	
Received by	J.H.
Sampled by	D.H.

COPY

LAB INFORMATION:		Oilfield Brines Only:	
All Waste Shipments:			
Compatible? (RT#)	Yes No	Barium	
PCBs (ppm)(Oily Waste Only)?		Calcium	
TOC (ppm)(CC Waste Only)?		Total Iron	
Flash Point (°F)	140	Magnesium	
pH (S.U.)	9.5	Sodium Chloride	
Cyanides? (mg/L)		Bicarbonate	
Sulfides? (ppm)		Carbonate	
Specific Gravity	1.05	TDS	1.47
Physical Description		Resistivity	
Stream Consistency	Yes No	Sulfate	
Oil in Sample	Yes No		
Temperature	63°F		
Conductivity	28.8mS		
% Solids	0.1		
Turbidity	Yes No		
Color (visual)			
TSS (%)	0.1		
Radiation Screen (as needed)			
Lab Signature	J.H.		

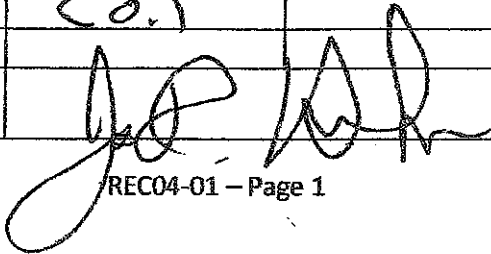
FINGERPRINT FORM

ENVIRONMENTAL GEO-TECHNOLOGIES, LLC.

RECEIVING & APPROVAL FORM

RECEIVING INFORMATION	
Date	05/07/14
Receiving ID#	105071402
Manifest# Line:	
Land Ban Cert included	Yes No
EGT Approval #	A
Generator	EGT
Client	
Transporter	
Time in	
Time out	
Received by	J.H.
Sampled by	DA

COPY

LAB INFORMATION:		Oilfield Brines Only:	
All Waste Shipments:			
Compatible? (RT#)	Yes No	Barium	
PCBs (ppm)(Oily Waste Only)?		Calcium	
TOC (ppm)(CC Waste Only)?		Total Iron	
Flash Point (°F)	140	Magnesium	
pH (S.U.)	10.7	Sodium Chloride	
Cyanides? (mg/L)		Bicarbonate	
Sulfides? (ppm)		Carbonate	
Specific Gravity	1.25	TDS	10.8
Physical Description		Resistivity	
Stream Consistency	Yes No	Sulfate	
Oil in Sample	Yes No		
Temperature	62°F		
Conductivity	214.9 mS		
% Solids	20.1		
Turbidity	Yes No		
Color (visual)			
TSS (%)	20.1		
Radiation Screen (as needed)			
Lab Signature			

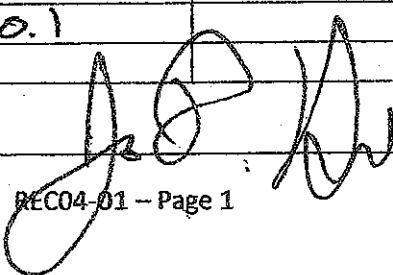
FINGERPRINT FORM

ENVIRONMENTAL GEO-TECHNOLOGIES, LLC.

RECEIVING & APPROVAL FORM

RECEIVING INFORMATION	
Date	05/07/14
Receiving ID#	IL05071403
Manifest# Line:	
Land Ban Cert included	Yes No
EGT Approval #	A
Generator	EGT
Client	
Transporter	
Time in	
Time out	
Received by	J.H.
Sampled by	DA

COPY

LAB INFORMATION:		Oilfield Brines Only:	
All Waste Shipments:			
Compatible? (RT#)	Yes No	Barium	
PCBs (ppm)(Oily Waste Only)?		Calcium	
TOC (ppm)(CC Waste Only)?		Total Iron	
Flash Point (°F)	> 140	Magnesium	
pH (S.U.)	8.2	Sodium Chloride	
Cyanides? (mg/L)		Bicarbonate	
Sulfides? (ppm)		Carbonate	
Specific Gravity	1.01	TDS	0.12
Physical Description		Resistivity	
Stream Consistency	Yes No	Sulfate	
Oil in Sample	Yes No		
Temperature	54°F		
Conductivity	2.1 mS		
% Solids	< 0.1		
Turbidity	Yes No		
Color (visual)			
TSS (%)	< 0.1		
Radiation Screen (as needed)			
Lab Signature			

FINGERPRINT FORM

ENVIRONMENTAL GEO-TECHNOLOGIES, LLC.

RECEIVING & APPROVAL FORM

RECEIVING INFORMATION

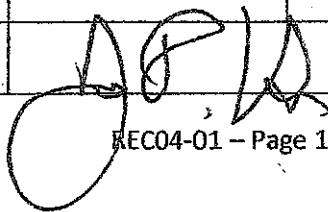
Date	05/08/14
Receiving ID#	10508/401
Manifest# Line:	
Land Ban Cert included	Yes No
EGT Approval #	A
Generator	EGT
Client	
Transporter	
Time in	
Time out	
Received by	S.H.
Sampled by	D.H.

COPY

LAB INFORMATION:

All Waste Shipments:

Oilfield Brines Only:

Compatible? (RT#)	Yes No	Barium	
PCBs (ppm)(Oily Waste Only)?		Calcium	
TOC (ppm)(CC Waste Only)?		Total Iron	
Flash Point (°F)	> 140	Magnesium	
pH (S.U.)	12.0	Sodium Chloride	
Cyanides? (mg/L)		Bicarbonate	
Sulfides? (ppm)		Carbonate	
Specific Gravity	1.13	TDS	8.67
Physical Description		Resistivity	
Stream Consistency	Yes No	Sulfate	
Oil in Sample	Yes No		
Temperature	57°F		
Conductivity	169.5-5		
% Solids	<0.1		
Turbidity	Yes No		
Color (visual)			
TSS (%)	20.1		
Radiation Screen (as needed)			
Lab Signature			

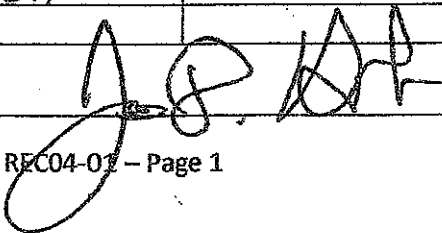
FINGERPRINT FORM

ENVIRONMENTAL GEO-TECHNOLOGIES, LLC.

RECEIVING & APPROVAL FORM

RECEIVING INFORMATION	
Date	5/9/14
Receiving ID#	105091401
Manifest# Line:	
Land Ban Cert included	Yes No
EGT Approval #	A
Generator	EGT
Client	
Transporter	
Time in	
Time out	
Received by	J.H.
Sampled by	RA

COPY

LAB INFORMATION:		Oilfield Brines Only:	
All Waste Shipments:			
Compatible? (RT#)	Yes No	Barium	
PCBs (ppm)(Oily Waste Only)?		Calcium	
TOC (ppm)(CC Waste Only)?		Total Iron	
Flash Point (°F)	140	Magnesium	
pH (S.U.)	4.9	Sodium Chloride	
Cyanides? (mg/L)		Bicarbonate	
Sulfides? (ppm)		Carbonate	
Specific Gravity	1.05	TDS	2.62
Physical Description		Resistivity	
Stream Consistency	Yes No	Sulfate	
Oil in Sample	Yes No		
Temperature	69°F		
Conductivity	52.7ms		
% Solids	40.1		
Turbidity	Yes No		
Color (visual)			
TSS (%)	40.1		
Radiation Screen (as needed)			
Lab Signature			

FINGERPRINT FORM

ENVIRONMENTAL GEO-TECHNOLOGIES, LLC.

RECEIVING & APPROVAL FORM

RECEIVING INFORMATION

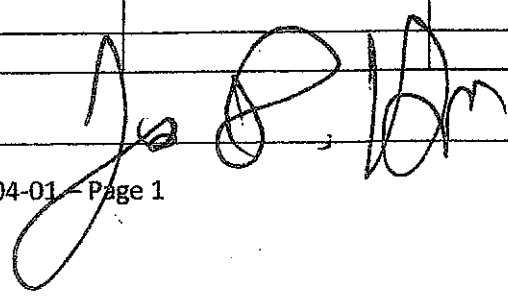
Date	5/9/14
Receiving ID#	E05091402
Manifest# Line:	
Land Ban Cert included	Yes No
EGT Approval #	A
Generator	EGT
Client	
Transporter	
Time in	
Time out	
Received by	J.H.
Sampled by	OH

COPY

LAB INFORMATION:

All Waste Shipments:

Oilfield Brines Only:

Compatible? (RT#)	Yes No	Barium	
PCBs (ppm)(Oily Waste Only)?		Calcium	
TOC (ppm)(CC Waste Only)?		Total Iron	
Flash Point (°F)	140	Magnesium	
pH (S.U.)	5.3	Sodium Chloride	
Cyanides? (mg/L)		Bicarbonate	
Sulfides? (ppm)		Carbonate	
Specific Gravity	1.10	TDS	4.52
Physical Description		Resistivity	
Stream Consistency	Yes No	Sulfate	
Oil in Sample	Yes No		
Temperature	69°F		
Conductivity	90.5 mS		
% Solids	<0.1		
Turbidity	Yes No		
Color (visual)			
TSS (%)	<0.1		
Radiation Screen (as needed)			
Lab Signature			

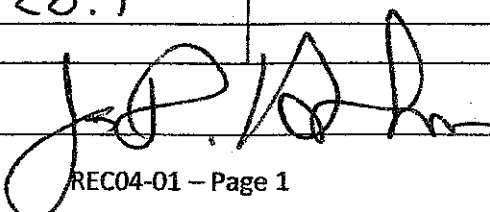
FINGERPRINT FORM

ENVIRONMENTAL GEO-TECHNOLOGIES, LLC.

RECEIVING & APPROVAL FORM

RECEIVING INFORMATION	
Date	5/12/14
Receiving ID#	1E05091403
Manifest# Line:	
Land Ban Cert included	Yes No
EGT Approval #	A
Generator	EGT
Client	
Transporter	
Time in	
Time out	
Received by	J.H.
Sampled by	DA

COPY

LAB INFORMATION:		Oilfield Brines Only:	
All Waste Shipments:			
Compatible? (RT#)	Yes No	Barium	
PCBs (ppm)(Oily Waste Only)?		Calcium	
TOC (ppm)(CC Waste Only)?		Total Iron	
Flash Point (°F)	140	Magnesium	
pH (S.U.)	6.1	Sodium Chloride	
Cyanides? (mg/L)		Bicarbonate	
Sulfides? (ppm)		Carbonate	
Specific Gravity	1.10	TDS	6.67
Physical Description		Resistivity	
Stream Consistency	Yes No	Sulfate	
Oil in Sample	Yes No		
Temperature	70°F		
Conductivity	132.4 mS		
% Solids	<0.1		
Turbidity	Yes No		
Color (visual)			
TSS (%)	<0.1		
Radiation Screen (as needed)			
Lab Signature			

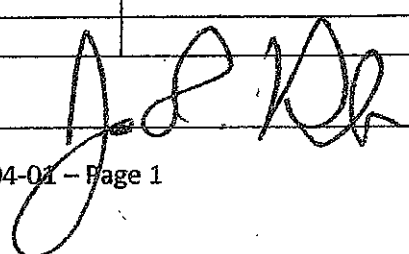
FINGERPRINT FORM

ENVIRONMENTAL GEO-TECHNOLOGIES, LLC.

RECEIVING & APPROVAL FORM

RECEIVING INFORMATION	
Date	5/12/14
Receiving ID#	I0512/401
Manifest# Line:	
Land Ban Cert included	Yes No
EGT Approval #	A
Generator	EGT
Client	
Transporter	
Time in	
Time out	
Received by	J.H.
Sampled by	D.H.

COPY

LAB INFORMATION:		Oilfield Brines Only:	
All Waste Shipments:			
Compatible? (RT#)	Yes No	Barium	
PCBs (ppm)(Oily Waste Only)?		Calcium	
TOC (ppm)(CC Waste Only)?		Total Iron	
Flash Point (°F)	140	Magnesium	
pH (S.U.)	10.9	Sodium Chloride	
Cyanides? (mg/L)		Bicarbonate	
Sulfides? (ppm)		Carbonate	
Specific Gravity	1.12	TDS	2.97
Physical Description		Resistivity	
Stream Consistency	Yes No	Sulfate	
Oil in Sample	Yes No		
Temperature	70°F		
Conductivity	155.6 mS		
% Solids	<0.1		
Turbidity	Yes No		
Color (visual)			
TSS (%)	<0.1		
Radiation Screen (as needed)			
Lab Signature			

FINGERPRINT FORM

ENVIRONMENTAL GEO-TECHNOLOGIES, LLC.

RECEIVING & APPROVAL FORM

RECEIVING INFORMATION

Date	5/13/14
Receiving ID#	10513/401
Manifest# Line:	
Land Ban Cert included	Yes No
EGT Approval #	A
Generator	EGT
Client	
Transporter	
Time in	
Time out	
Received by	J.H.
Sampled by	OH

COPY

LAB INFORMATION:

All Waste Shipments:

Oilfield Brines Only:

Compatible? (RT#)	Yes No	Barium	
PCBs (ppm)(Oily Waste Only)?		Calcium	
TOC (ppm)(CC Waste Only)?		Total Iron	
Flash Point (°F)	> 140	Magnesium	
pH (S.U.)	13.2	Sodium Chloride	
Cyanides? (mg/L)		Bicarbonate	
Sulfides? (ppm)		Carbonate	
Specific Gravity	1.05	TDS	3.27
Physical Description		Resistivity	
Stream Consistency	Yes No	Sulfate	
Oil in Sample	Yes No		
Temperature	69°F		
Conductivity	66.5 nS		
% Solids	3.2		
Turbidity	Yes No		
Color (visual)			
TSS (%)	< 0.1		
Radiation Screen (as needed)			
Lab Signature			

FINGERPRINT FORM

ENVIRONMENTAL GEO-TECHNOLOGIES, LLC.

RECEIVING & APPROVAL FORM

RECEIVING INFORMATION	
Date	5/14/14
Receiving ID#	105141401
Manifest# Line:	
Land Ban Cert included	Yes No
EGT Approval #	A
Generator	EGT
Client	
Transporter	
Time in	
Time out	
Received by	J. H. [Signature]
Sampled by	[Signature]

COPY

LAB INFORMATION:		Oilfield Brines Only:	
All Waste Shipments:		Barium	
Compatible? (RT#)	<u>Yes</u> No	Calcium	
PCBs (ppm)(Oily Waste Only)?		Total Iron	
TOC (ppm)(CC Waste Only)?		Magnesium	
Flash Point (°F)	140	Sodium Chloride	
pH (S.U.)	13.2	Bicarbonate	
Cyanides? (mg/L)		Carbonate	
Sulfides? (ppm)		TDS	4.87
Specific Gravity	1.07	Resistivity	
Physical Description		Sulfate	
Stream Consistency	Yes No		
Oil in Sample	Yes No		
Temperature	69°F		
Conductivity	96.3 uS		
% Solids	20.1		
Turbidity	Yes No		
Color (visual)			
TSS (%)	20.1		
Radiation Screen (as needed)			
Lab Signature	[Signature]		

FINGERPRINT FORM

ENVIRONMENTAL GEO-TECHNOLOGIES, LLC.

RECEIVING & APPROVAL FORM

RECEIVING INFORMATION

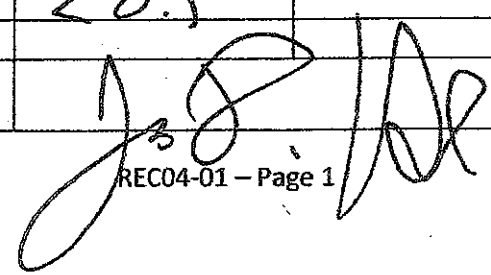
Date	5/14/14
Receiving ID#	T 05141402
Manifest# Line:	
Land Ban Cert included	Yes No
EGT Approval #	
Generator	
Client	
Transporter	
Time in	
Time out	
Received by	J.H.
Sampled by	DR

COPY

LAB INFORMATION:

All Waste Shipments:

Oilfield Brines Only:

Compatible? (RT#)	Yes No	Barium	
PCBs (ppm)(Oily Waste Only)?		Calcium	
TOC (ppm)(CC Waste Only)?		Total Iron	
Flash Point (°F)	140	Magnesium	
pH (S.U.)	13.3	Sodium Chloride	
Cyanides? (mg/L)		Bicarbonate	
Sulfides? (ppm)		Carbonate	
Specific Gravity	1.11	TDS	6.67
Physical Description		Resistivity	
Stream Consistency	Yes No	Sulfate	
Oil in Sample	Yes No		
Temperature	70°F		
Conductivity	131.5		
% Solids	<0.1		
Turbidity	Yes No		
Color (visual)			
TSS (%)	<0.1		
Radiation Screen (as needed)			
Lab Signature			

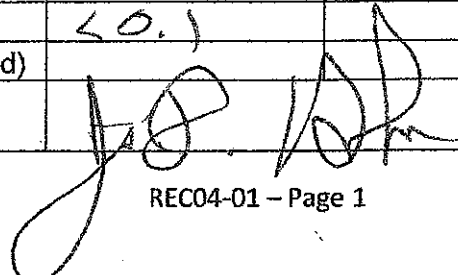
FINGERPRINT FORM

ENVIRONMENTAL GEO-TECHNOLOGIES, LLC.

RECEIVING & APPROVAL FORM

RECEIVING INFORMATION	
Date	5/15/14
Receiving ID#	I0515140
Manifest# Line:	
Land Ban Cert included	Yes No
EGT Approval #	
Generator	
Client	
Transporter	
Time in	
Time out	
Received by	JH
Sampled by	DA

COPY

LAB INFORMATION:		Oilfield Brines Only:	
All Waste Shipments:			
Compatible? (RT#)	Yes No	Barium	
PCBs (ppm)(Oily Waste Only)?		Calcium	
TOC (ppm)(CC Waste Only)?		Total Iron	
Flash Point (°F)	140	Magnesium	
pH (S.U.)	4.8	Sodium Chloride	
Cyanides? (mg/L)		Bicarbonate	
Sulfides? (ppm)		Carbonate	
Specific Gravity	1.12	TDS	5.9%
Physical Description		Resistivity	
Stream Consistency	Yes No	Sulfate	
Oil in Sample	Yes No		
Temperature	70°F		
Conductivity	117.1		
% Solids	20.1		
Turbidity	Yes No		
Color (visual)			
TSS (%)	20.1		
Radiation Screen (as needed)			
Lab Signature			

FINGERPRINT FORM

ENVIRONMENTAL GEO-TECHNOLOGIES, LLC.

RECEIVING & APPROVAL FORM

RECEIVING INFORMATION

Date	5/16/14
Receiving ID#	EGT516140
Manifest# Line:	
Land Ban Cert included	Yes No
EGT Approval #	A
Generator	EGT
Client	
Transporter	
Time in	
Time out	
Received by	J. H.
Sampled by	

COPY

LAB INFORMATION:

All Waste Shipments:

Compatible? (RT#)	Yes No
PCBs (ppm)(Oily Waste Only)?	
TOC (ppm)(CC Waste Only)?	
Flash Point (°F)	> 140
pH (S.U.)	6.0
Cyanides? (mg/L)	
Sulfides? (ppm)	
Specific Gravity	1.07
Physical Description	
Stream Consistency	Yes No
Oil in Sample	Yes No
Temperature	64°F
Conductivity	101.4 mS
% Solids	5.1
Turbidity	Yes No
Color (visual)	
TSS (%)	< 0.1
Radiation Screen (as needed)	

Oilfield Brines Only:

Barium	
Calcium	
Total Iron	
Magnesium	
Sodium Chloride	
Bicarbonate	
Carbonate	
TDS	5.12
Resistivity	
Sulfate	

Lab Signature

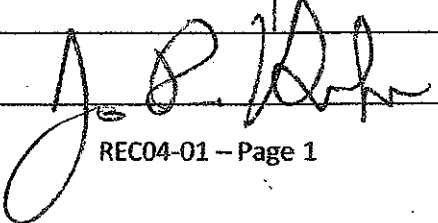
FINGERPRINT FORM

ENVIRONMENTAL GEO-TECHNOLOGIES, LLC.

RECEIVING & APPROVAL FORM

RECEIVING INFORMATION	
Date	5/19/14
Receiving ID#	105191401
Manifest# Line:	
Land Ban Cert included	Yes No
EGT Approval #	
Generator	
Client	
Transporter	
Time in	
Time out	
Received by	J.H.
Sampled by	N.M.

COPY

LAB INFORMATION:		Oilfield Brines Only:	
All Waste Shipments:			
Compatible? (RT#)	Yes No	Barium	
PCBs (ppm)(Oily Waste Only)?		Calcium	
TOC (ppm)(CC Waste Only)?		Total Iron	
Flash Point (°F)	140	Magnesium	
pH (S.U.)	11.8	Sodium Chloride	
Cyanides? (mg/L)		Bicarbonate	
Sulfides? (ppm)		Carbonate	
Specific Gravity	1.02	TDS	2.12
Physical Description		Resistivity	
Stream Consistency	Yes No	Sulfate	
Oil in Sample	Yes No		
Temperature	68°F		
Conductivity	42.5 mS		
% Solids	2.1		
Turbidity	Yes No		
Color (visual)			
TSS (%)	< 0.1		
Radiation Screen (as needed)			
Lab Signature			

FINGERPRINT FORM

ENVIRONMENTAL GEO-TECHNOLOGIES, LLC.

RECEIVING & APPROVAL FORM

RECEIVING INFORMATION

Date	5/19/14
Receiving ID#	I 05191402
Manifest# Line:	
Land Ban Cert included	Yes No
EGT Approval #	A
Generator	EGT
Client	
Transporter	
Time in	
Time out	
Received by	J.H.
Sampled by	D.H.

COPY

LAB INFORMATION:

All Waste Shipments:

Compatible? (RT#) ☒ Yes ☐ No

PCBs (ppm)(Oily Waste Only)?

TOC (ppm)(CC Waste Only)?

Flash Point (°F)

pH (S.U.)

Cyanides? (mg/L)

Sulfides? (ppm)

Specific Gravity

Physical Description

Stream Consistency

Oil in Sample

Temperature

Conductivity

% Solids

Turbidity

Color (visual)

TSS (%)

Radiation Screen (as needed)

Lab Signature

Oilfield Brines Only:

Barium

Calcium

Total Iron

Magnesium

Sodium Chloride

Bicarbonate

Carbonate

TDS

Resistivity

Sulfate

FINGERPRINT FORM

ENVIRONMENTAL GEO-TECHNOLOGIES, LLC.

RECEIVING & APPROVAL FORM

RECEIVING INFORMATION

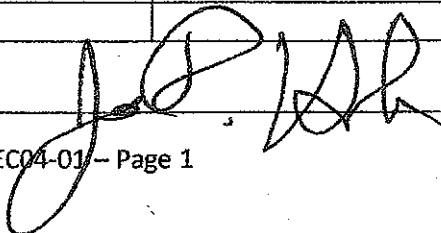
Date	5/20/14
Receiving ID#	1052014 01
Manifest# Line:	
Land Ban Cert included	Yes No
EGT Approval #	A
Generator	EGT
Client	
Transporter	
Time in	
Time out	
Received by	J.H.
Sampled by	W.H.

COPY

LAB INFORMATION:

All Waste Shipments:

Oilfield Brines Only:

Compatible? (RT#)	Yes No	Barium	
PCBs (ppm)(Oily Waste Only)?		Calcium	
TOC (ppm)(CC Waste Only)?		Total Iron	
Flash Point (°F)	> 140	Magnesium	
pH (S.U.)	12.3	Sodium Chloride	
Cyanides? (mg/L)		Bicarbonate	
Sulfides? (ppm)		Carbonate	
Specific Gravity	1.14	TDS	9.17
Physical Description		Resistivity	
Stream Consistency	Yes No	Sulfate	
Oil in Sample	Yes No		
Temperature	68°F		
Conductivity	182.6 mS		
% Solids	9.1		
Turbidity	Yes No		
Color (visual)			
TSS (%)	< 0.1		
Radiation Screen (as needed)			
Lab Signature			

FINGERPRINT FORM

ENVIRONMENTAL GEO-TECHNOLOGIES, LLC.

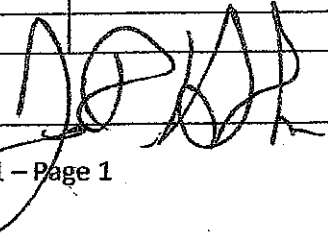
RECEIVING & APPROVAL FORM

RECEIVING INFORMATION

Date	5/21/14
Receiving ID#	I 05211401
Manifest# Line:	
Land Ban Cert included	Yes No
EGT Approval #	A
Generator	EGT
Client	
Transporter	
Time in	
Time out	
Received by	J.H.
Sampled by	D.H.

COPY

Well one

LAB INFORMATION:		Oilfield Brines Only:	
All Waste Shipments:			
Compatible? (RT#)	Yes No	Barium	
PCBs (ppm)(Oily Waste Only)?		Calcium	
TOC (ppm)(CC Waste Only)?		Total Iron	
Flash Point (°F)	> 140	Magnesium	
pH (S.U.)	0.9	Sodium Chloride	
Cyanides? (mg/L)		Bicarbonate	
Sulfides? (ppm)		Carbonate	
Specific Gravity	1.16	TDS	6.07
Physical Description		Resistivity	
Stream Consistency	Yes No	Sulfate	
Oil in Sample	Yes No		
Temperature	72°F		
Conductivity	119.5 mS		
% Solids	6.0		
Turbidity	Yes No		
Color (visual)			
TSS (%)	< 0.1		
Radiation Screen (as needed)			
Lab Signature			

FINGERPRINT FORM

ENVIRONMENTAL GEO-TECHNOLOGIES, LLC.

RECEIVING & APPROVAL FORM

RECEIVING INFORMATION

Date	8/23/14
Receiving ID#	105231401
Manifest# Line:	
Land Ban Cert included	Yes No
EGT Approval #	
Generator	
Client	
Transporter	
Time in	
Time out	
Received by	J.H.
Sampled by	D.H.

COPY

LAB INFORMATION:

All Waste Shipments:

Compatible? (RT#)	Yes No
PCBs (ppm)(Oily Waste Only)?	
TOC (ppm)(CC Waste Only)?	
Flash Point (°F)	140
pH (S.U.)	6.5
Cyanides? (mg/L)	
Sulfides? (ppm)	
Specific Gravity	1.00
Physical Description	
Stream Consistency	Yes No
Oil in Sample	Yes No
Temperature	75°F
Conductivity	0.8 mS
% Solids	0.1
Turbidity	Yes No
Color (visual)	
TSS (%)	< 0.1
Radiation Screen (as needed)	
Lab Signature	

Oilfield Brines Only:

Barium	
Calcium	
Total Iron	
Magnesium	
Sodium Chloride	
Bicarbonate	
Carbonate	
TDS	0.1
Resistivity	
Sulfate	

FINGERPRINT FORM

ENVIRONMENTAL GEO-TECHNOLOGIES, LLC.

RECEIVING & APPROVAL FORM

RECEIVING INFORMATION

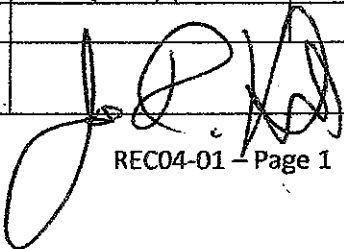
Date	5/23/14
Receiving ID#	I 05231402
Manifest# Line:	
Land Ban Cert included	Yes No
EGT Approval #	
Generator	
Client	
Transporter	
Time in	
Time out	
Received by	J.H.
Sampled by	D.A.

COPY

LAB INFORMATION:

All Waste Shipments:

Oilfield Brines Only:

Compatible? (RT#)	Yes No	Barium	
PCBs (ppm)(Oily Waste Only)?		Calcium	
TOC (ppm)(CC Waste Only)?		Total Iron	
Flash Point (°F)	> 140	Magnesium	
pH (S.U.)	< 0.1	Sodium Chloride	
Cyanides? (mg/L)		Bicarbonate	
Sulfides? (ppm)		Carbonate	
Specific Gravity	1.23	TDS	16.57
Physical Description		Resistivity	
Stream Consistency	Yes No	Sulfate	
Oil in Sample	Yes No		
Temperature	92°F		
Conductivity	320.9 mS		
% Solids	16.5		
Turbidity	Yes No		
Color (visual)			
TSS (%)	< 0.1		
Radiation Screen (as needed)			
Lab Signature			

FINGERPRINT FORM

ENVIRONMENTAL GEO-TECHNOLOGIES, LLC.

RECEIVING & APPROVAL FORM

RECEIVING INFORMATION

Date	05/27/14
Receiving ID#	105271401
Manifest# Line:	
Land Ban Cert included	Yes No
EGT Approval #	A
Generator	EGT
Client	
Transporter	
Time in	
Time out	
Received by	JH
Sampled by	JH

COPY

LAB INFORMATION:

All Waste Shipments:

Oilfield Brines Only:

Compatible? (RT#)	Yes No	Barium	
PCBs (ppm)(Oily Waste Only)?		Calcium	
TOC (ppm)(CC Waste Only)?		Total Iron	
Flash Point (°F)	140	Magnesium	
pH (S.U.)	<0.1	Sodium Chloride	
Cyanides? (mg/L)		Bicarbonate	
Sulfides? (ppm)		Carbonate	
Specific Gravity	1.26	TDS	22.82
Physical Description		Resistivity	
Stream Consistency	Yes No	Sulfate	
Oil in Sample	Yes No		
Temperature	81°F		
Conductivity	400 mS		
% Solids	22.8		
Turbidity	Yes No		
Color (visual)			
TSS (%)	<0.1		
Radiation Screen (as needed)			
Lab Signature	JH		

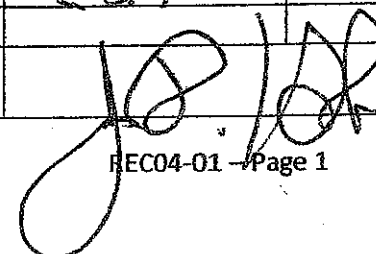
FINGERPRINT FORM

ENVIRONMENTAL GEO-TECHNOLOGIES, LLC.

RECEIVING & APPROVAL FORM

RECEIVING INFORMATION	
Date	5/28/14
Receiving ID#	105281401
Manifest# Line:	
Land Ban Cert included	Yes No
EGT Approval #	A
Generator	EGT
Client	
Transporter	
Time in	
Time out	
Received by	J.H.
Sampled by	D.H.

COPY

LAB INFORMATION:		Oilfield Brines Only:	
All Waste Shipments:			
Compatible? (RT#)	<input checked="" type="radio"/> Yes <input type="radio"/> No	Barium	
PCBs (ppm)(Oily Waste Only)?		Calcium	
TOC (ppm)(CC Waste Only)?		Total Iron	
Flash Point (°F)	140	Magnesium	
pH (S.U.)	< 0.1	Sodium Chloride	
Cyanides? (mg/L)		Bicarbonate	
Sulfides? (ppm)		Carbonate	
Specific Gravity	1.25	TDS	26.87
Physical Description		Resistivity	
Stream Consistency	Yes No	Sulfate	
Oil in Sample	Yes No		
Temperature	77°F		
Conductivity	> 400 mS		
% Solids	26.8		
Turbidity	Yes No		
Color (visual)			
TSS (%)	< 0.1		
Radiation Screen (as needed)			
Lab Signature			

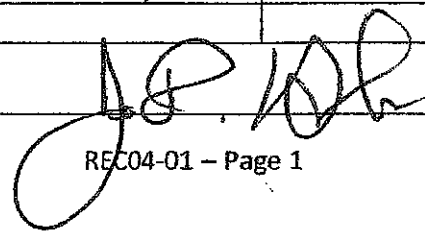
FINGERPRINT FORM

ENVIRONMENTAL GEO-TECHNOLOGIES, LLC.

RECEIVING & APPROVAL FORM

RECEIVING INFORMATION	
Date	5/28/14
Receiving ID#	105281402
Manifest# Line:	
Land Ban Cert included	Yes No
EGT Approval #	A
Generator	EGT
Client	
Transporter	
Time in	
Time out	
Received by	J.H.
Sampled by	AK

COPY

LAB INFORMATION:		Oilfield Brines Only:	
All Waste Shipments:			
Compatible? (RT#)	Yes No	Barium	
PCBs (ppm)(Oily Waste Only)?		Calcium	
TOC (ppm)(CC Waste Only)?		Total Iron	
Flash Point (°F)	> 140	Magnesium	
pH (S.U.)	0.8	Sodium Chloride	
Cyanides? (mg/L)		Bicarbonate	
Sulfides? (ppm)		Carbonate	
Specific Gravity	1.10	TDS	7.67
Physical Description		Resistivity	
Stream Consistency	Yes No	Sulfate	
Oil in Sample	Yes No		
Temperature	72°F		
Conductivity	151.4 mS		
% Solids	7.6		
Turbidity	Yes No		
Color (visual)			
TSS (%)	< 0.1		
Radiation Screen (as needed)			
Lab Signature			

FINGERPRINT FORM

ENVIRONMENTAL GEO-TECHNOLOGIES, LLC.

RECEIVING & APPROVAL FORM

RECEIVING INFORMATION

Date	5/28/14
Receiving ID#	105281403
Manifest# Line:	
Land Ban Cert included	Yes No
EGT Approval #	
Generator	
Client	
Transporter	
Time in	
Time out	
Received by	J.H.
Sampled by	Day H

COPY

LAB INFORMATION:

All Waste Shipments:

Oilfield Brines Only:

Compatible? (RT#)	Yes No	Barium	
PCBs (ppm)(Oily Waste Only)?		Calcium	
TOC (ppm)(CC Waste Only)?		Total Iron	
Flash Point (°F)	> 140	Magnesium	
pH (S.U.)	7.0	Sodium Chloride	
Cyanides? (mg/L)		Bicarbonate	
Sulfides? (ppm)		Carbonate	
Specific Gravity	1.00	TDS	0.1
Physical Description		Resistivity	
Stream Consistency	Yes No	Sulfate	
Oil in Sample	Yes No		
Temperature	63°F		
Conductivity	0.6 mS		
% Solids	0.1		
Turbidity	Yes No		
Color (visual)			
TSS (%)	0.1		
Radiation Screen (as needed)			
Lab Signature	J.E. 102		

FINGERPRINT FORM

ENVIRONMENTAL GEO-TECHNOLOGIES, LLC.

RECEIVING & APPROVAL FORM

RECEIVING INFORMATION

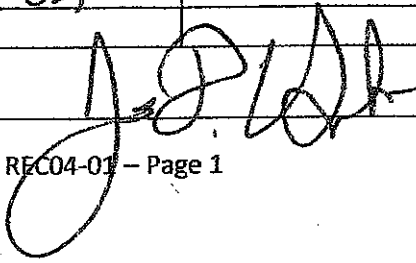
Date	5/29/14
Receiving ID#	105291401
Manifest# Line:	
Land Ban Cert included	Yes No
EGT Approval #	A
Generator	EGT
Client	
Transporter	
Time in	
Time out	
Received by	J.H.
Sampled by	D.H.

COPY

LAB INFORMATION:

All Waste Shipments:

Oilfield Brines Only:

Compatible? (RT#)	Yes No	Barium	
PCBs (ppm)(Oily Waste Only)?		Calcium	
TOC (ppm)(CC Waste Only)?		Total Iron	
Flash Point (°F)	> 140	Magnesium	
pH (S.U.)	1.3	Sodium Chloride	
Cyanides? (mg/L)		Bicarbonate	
Sulfides? (ppm)		Carbonate	
Specific Gravity	1.10	TDS	6.1?
Physical Description		Resistivity	
Stream Consistency	Yes No	Sulfate	
Oil in Sample	Yes No		
Temperature	71°F		
Conductivity	120.1 mS		
% Solids	6.1		
Turbidity	Yes No		
Color (visual)			
TSS (%)	< 0.1		
Radiation Screen (as needed)			
Lab Signature			

FINGERPRINT FORM

ENVIRONMENTAL GEO-TECHNOLOGIES, LLC

RECEIVING & APPROVAL FORM

RECEIVING INFORMATION

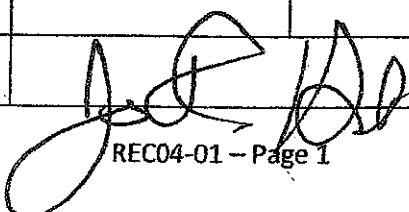
Date	05/30/14	
Receiving ID#	E05301401	
Manifest#	Line:	
Land Ban Cert included	Yes	No
EGT Approval #		
Generator		
Client		
Transporter		
Time in		
Time out		
Received by	JH	
Sampled by	JH	

COPY

LAB INFORMATION:

All Waste Shipments:

Oilfield Brines Only:

Compatible? (RT#)	Yes	No	Barium	
PCBs (ppm)(Oily Waste Only)?			Calcium	
TOC (ppm)(CC Waste Only)?			Total Iron	
Flash Point (°F)	140		Magnesium	
pH (S.U.)	1.2		Sodium Chloride	
Cyanides? (mg/L)			Bicarbonate	
Sulfides? (ppm)			Carbonate	
Specific Gravity	1.10		TDS	6.07
Physical Description			Resistivity	
Stream Consistency	Yes	No	Sulfate	
Oil in Sample	Yes	No		
Temperature	72°F			
Conductivity	118.8 mS			
% Solids	6.0			
Turbidity	Yes	No		
Color (visual)				
TSS (%)	<0.1			
Radiation Screen (as needed)				
Lab Signature				

**WASTE STREAMS
CHARACTERIZATIONS**