

EGT

Environmental GEO Technologies

28470 Citrin Drive, Romulus, Michigan 48174 | Phone 734-946-1000 | Fax 734-946-1002

February 24, 2013

Mr. Allan Batka
United States Environmental Protection Agency
Region 5 (WU-16J)
77 West Jackson Blvd.
Chicago, Illinois 60604

Re: EGT Monthly Report (in conformance with MI-163-1W-C010 & MI-163-1W-C011)

Dear Mr. Batka:

Environmental Geo-Technologies, LLC ("EGT") hereby timely submits its third Monthly Report in conformance with the requirements of its two EPA UIC permits (#s MI-163-1W-C010 & MI-163-1W-C011).

EGT is providing all of the attached information in the same sequence as required by both subject permits, i.e. Part II.D.1 (a – i), Part III, Attachment A, and Part III, Attachment E.G.2 & E.I.

We trust that you find this report satisfactory, however, if you have any questions or comments, please feel free to contact us.

Sincerely,



Richard J. Powals, P.E.

cc: J. Frost (EGT), T. Athans (HH)

att.

022414/rjpEGTEPAMonthlyReport-January 2014

AVERAGE INJECTION RATE

Calculation of Average Injection Rate

CURRENT REPORTING YEAR 2014CURRENT REPORTING MONTH JANUARYDate (month, year) of the first injection into either well at the Citrin Road Facility, *ie EGT*
NOVEMBER 2013

CURRENT MONTH (all volumes in gallons)

	Injected Waste	Injected Non-Waste	Total injected
MI-163-1W-C010 , Well #1-12			
Current Month	86,825 gal	0	86,825 gal
Since facility first injected			94,568 gal
MI-163-1W-C011, Well #2-12			
Current Month	94,671 gal	0	94,671 gal
Since facility first injected			307,942 gal
		Lifetime Combined	402,510 gal

Conversion factors

365.25 days per year ÷ 12 months per year = 30.4375 days per month

30.4375 days per month × 1440 minutes per day = 43,830 minutes per month

CalculationsWhole number of months of injection 3

3 lifetime number of months of injection × 43,830 minutes/month
= 131,490 minutes of injection

Lifetime combined injected volume 402,510 gal ÷ 131,490 minutes of injection
= 3.1 gpm average injection rate

WELL 1 DATA

SUMMARY OF OPERATING, MONITORING AND REPORTING REQUIREMENTS

Injection Well I

Month: January

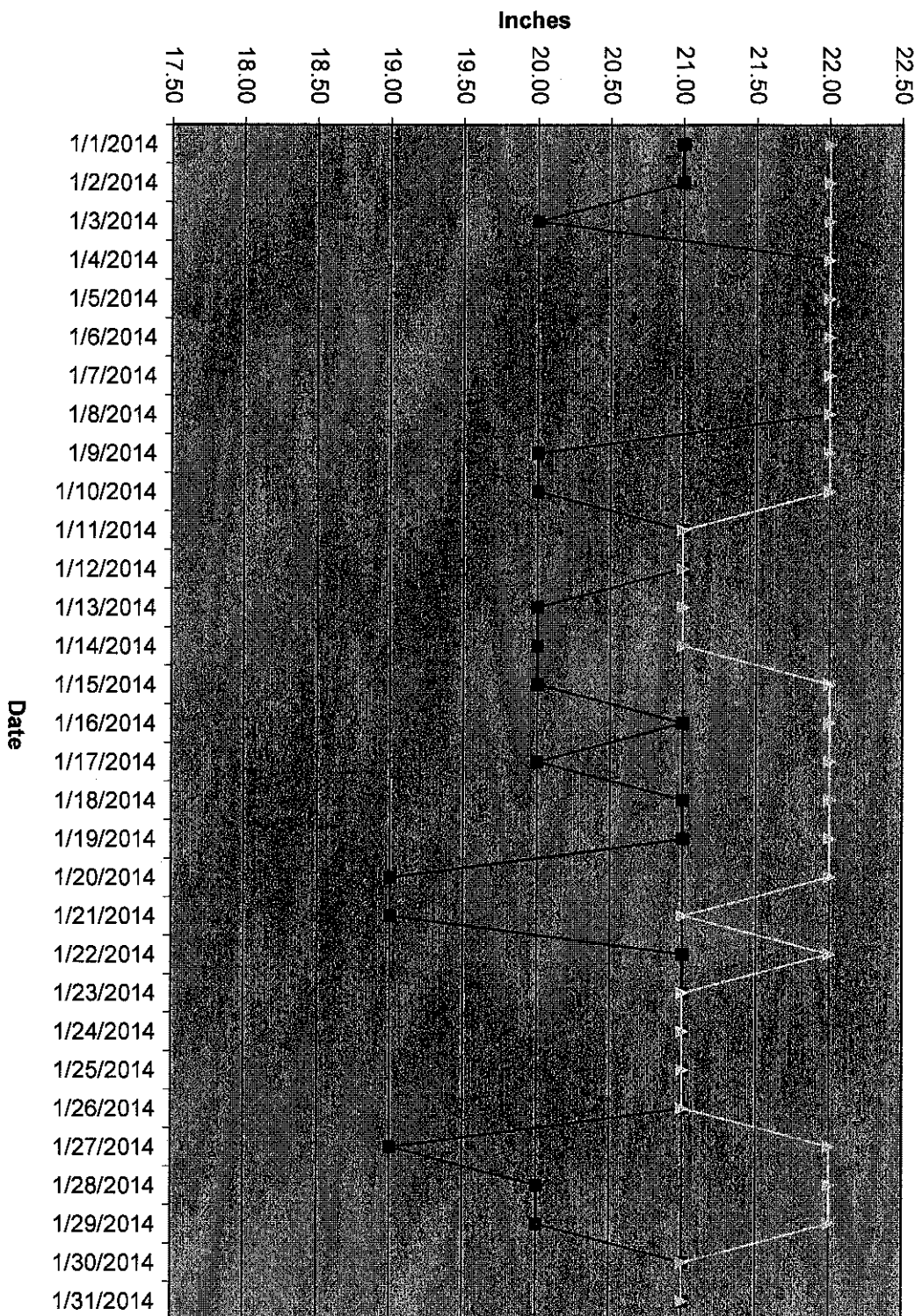
Year: 2014

CHARACTERISTIC	LIMITATION	MINIMUM MONITORING FREQUENCY	MINIMUM REPORTING FREQUENCY	STATUS
Injection Pressure	765 psig maximum	continuous	monthly	735 psig
Annulus Injection Pressure	100 psig minimum	continuous	monthly	200 psig
Annulus/Tubing Diff	100 psig minimum above injection pressure	continuous	monthly	129 psig
Injection Rate (Average both wells)	166 gpm	continuous	monthly	3.1 gpm
Injection Rate (Maximum instantaneous)	270 gpm	continuous	monthly	176 gpm
Sight Glass Level		continuous	monthly	Graph attached
Annulus Fluid Loss		monthly	monthly	0.0 gal
Cumulative Volume		daily	monthly	86,825 gal
Temperature		6-hour intervals	monthly	Graph attached
Corrosion Monitoring		monthly	monthly	Report attached
Repair and Maintenance		NA	monthly	Log attached
Toxicity Characteristic List		annually	monthly	NA
Fingerprint Analysis		per load	monthly	Sheets attached
Chemical Composition and Physical Characteristics of Injected Oilfield Brine		annually	annually	NA
pH of Injected Fluids		continuous	monthly	Graph attached

Well 01 Monthly Data

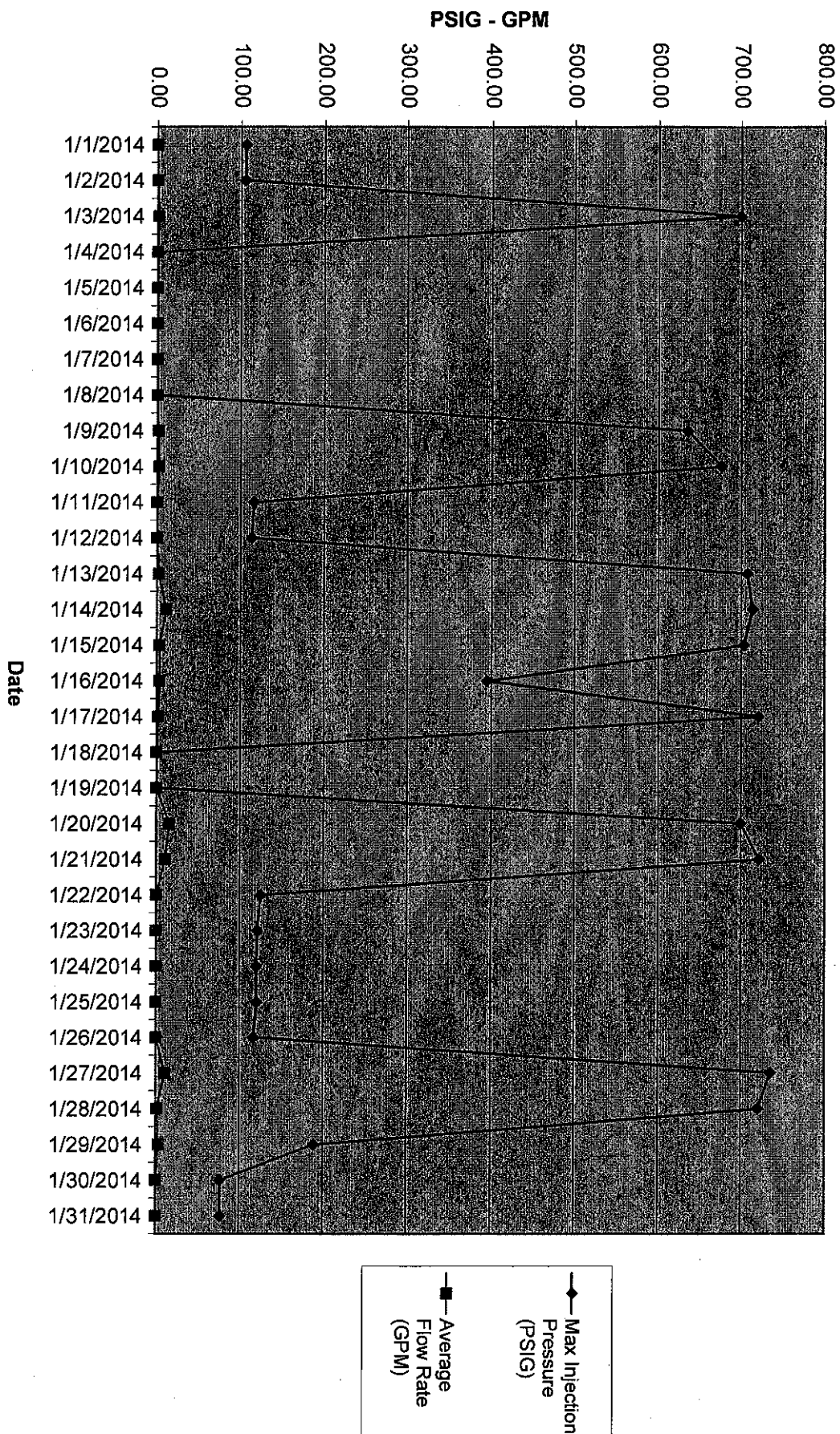
Date	Min Injection Pressure (PSIG)	Max Injection Pressure (PSIG)	Min Sight Glass Level (in)	Max Sight Glass Level (in)	Min Annulus Pressure (PSIG)	Max Annulus Pressure (PSIG)	Min Injectate pH	Max Injectate pH	Min Flow Rate (GPM)	Max Flow Rate (GPM)	Avg Flow Rate (GPM)	Min Differential Pressure (PSIG)	Max Differential Pressure (PSIG)
1/1/2014	104.74	105.40	21.00	22.00	321.96	323.74	4.58	4.79	0.00	0.00	0.00	217.17	218.39
1/2/2014	104.14	104.83	21.00	22.00	320.10	322.08	4.68	5.03	0.00	0.00	0.00	215.90	217.32
1/3/2014	0.11	699.55	20.00	22.00	237.01	992.44	4.58	5.31	0.00	34.02	1.48	189.99	348.84
1/4/2014	0.11	0.11	22.00	22.00	236.02	237.13	4.93	5.23	0.00	0.00	0.00	235.91	237.02
1/5/2014	0.11	0.11	22.00	22.00	234.89	236.12	5.18	5.26	0.00	0.00	0.00	234.78	236.02
1/6/2014	0.11	0.11	22.00	22.00	228.86	245.98	4.76	5.25	0.00	4.56	0.00	228.75	245.87
1/7/2014	0.00	0.11	22.00	22.00	227.37	228.94	4.87	5.08	0.00	0.00	0.00	227.37	228.83
1/8/2014	0.00	0.28	22.00	22.00	226.83	227.83	4.85	5.12	0.00	0.00	0.00	226.86	227.81
1/9/2014	0.00	634.60	20.00	22.00	225.92	912.42	4.85	5.34	0.00	112.43	1.01	196.96	349.69
1/10/2014	0.01	676.30	20.00	22.00	246.95	991.09	4.73	5.60	0.00	134.34	2.13	198.42	348.89
1/11/2014	112.92	115.45	21.00	21.00	441.55	448.65	5.51	5.68	0.00	0.00	0.00	328.55	331.25
1/12/2014	111.87	112.99	21.00	21.00	437.67	441.58	5.64	6.06	0.00	0.00	0.00	325.71	328.68
1/13/2014	27.16	707.35	20.00	21.00	325.44	986.67	4.77	6.35	0.00	69.09	1.94	193.85	364.91
1/14/2014	26.11	713.71	20.00	21.00	356.20	997.55	5.02	6.36	0.00	58.87	10.95	190.78	349.15
1/15/2014	0.26	703.39	20.00	22.00	200.31	1012.66	0.68	6.32	0.00	114.90	2.68	177.17	350.81
1/16/2014	0.61	394.56	21.00	22.00	223.62	608.46	0.40	0.86	0.00	108.35	3.27	199.54	358.50
1/17/2014	0.06	721.01	20.00	22.00	202.11	939.11	0.60	1.25	0.00	150.24	1.25	128.51	590.17
1/18/2014	0.00	0.07	21.00	22.00	252.03	255.49	1.01	1.50	0.00	0.00	0.00	251.97	255.47
1/19/2014	0.00	0.35	21.00	22.00	252.92	254.89	1.45	1.58	0.00	0.00	0.00	252.68	254.87
1/20/2014	0.05	699.55	19.00	22.00	251.90	993.49	1.03	2.67	0.00	176.15	14.89	195.07	392.67
1/21/2014	87.58	721.77	19.00	21.00	383.37	1009.72	1.49	9.39	0.00	125.87	9.94	186.90	370.81
1/22/2014	0.51	124.82	21.00	22.00	240.31	468.07	8.87	13.33	0.00	0.00	0.00	154.27	347.54
1/23/2014	118.40	120.90	21.00	21.00	419.55	424.11	8.40	11.01	0.00	0.00	0.00	301.10	303.75
1/24/2014	116.39	119.93	21.00	21.00	415.75	419.64	8.13	12.93	0.00	0.00	0.00	295.84	301.42
1/25/2014	116.28	120.33	21.00	21.00	410.84	415.81	12.83	12.97	0.00	0.00	0.00	294.48	296.52
1/26/2014	115.07	116.42	21.00	21.00	406.58	410.92	12.39	12.96	0.00	0.00	0.00	291.40	294.57
1/27/2014	2.80	734.94	19.00	22.00	246.49	1007.01	0.17	13.10	0.00	134.96	10.49	186.36	361.08
1/28/2014	5.52	720.74	20.00	22.00	251.96	973.24	0.67	3.93	0.00	131.11	1.13	184.16	349.85
1/29/2014	2.63	188.70	20.00	22.00	242.43	491.79	3.25	5.60	0.00	31.43	2.85	200.06	349.96
1/30/2014	73.51	76.56	21.00	21.00	380.77	387.08	5.50	5.67	0.00	0.00	0.00	306.90	313.26
1/31/2014	76.04	76.80	21.00	21.00	384.65	386.52	5.31	5.68	0.00	0.00	0.00	308.36	310.06

Well 1 Min/Max Sight Glass Level Chart



—■— Min Sight
 Glass Level
 —▲— Max Sight
 Glass Level

Well 1 Max Injection Pressure and Avg. Flow Rate



Circle Chart Index

Environmental Geo-Technologies, LLC 28470 Citrin Drive Romulus, MI 48174

Chart Recorder #1

Channel #1

Blue Pen - Well 1 Injection Pressure

Channel #2

Red Pen – Well 1 Annulus Pressure

Channel #3

Green Pen – Well 1 Flow Rate

Channel #4

Black Pen – Well 1 Annulus Tank Level

Chart Recorder #2

Channel #1

Blue Pen – Well 2 Injection Pressure

Channel #2

Red Pen – Well 2 Annulus Pressure

Channel #3

Green Pen – Well 2 Flow Rate

Channel #4

Black Pen – Well 2 Annulus Tank Level

Chart Recorder #3

Channel #1

Blue Pen – Injection pH Well 1 & 2

Channel #2

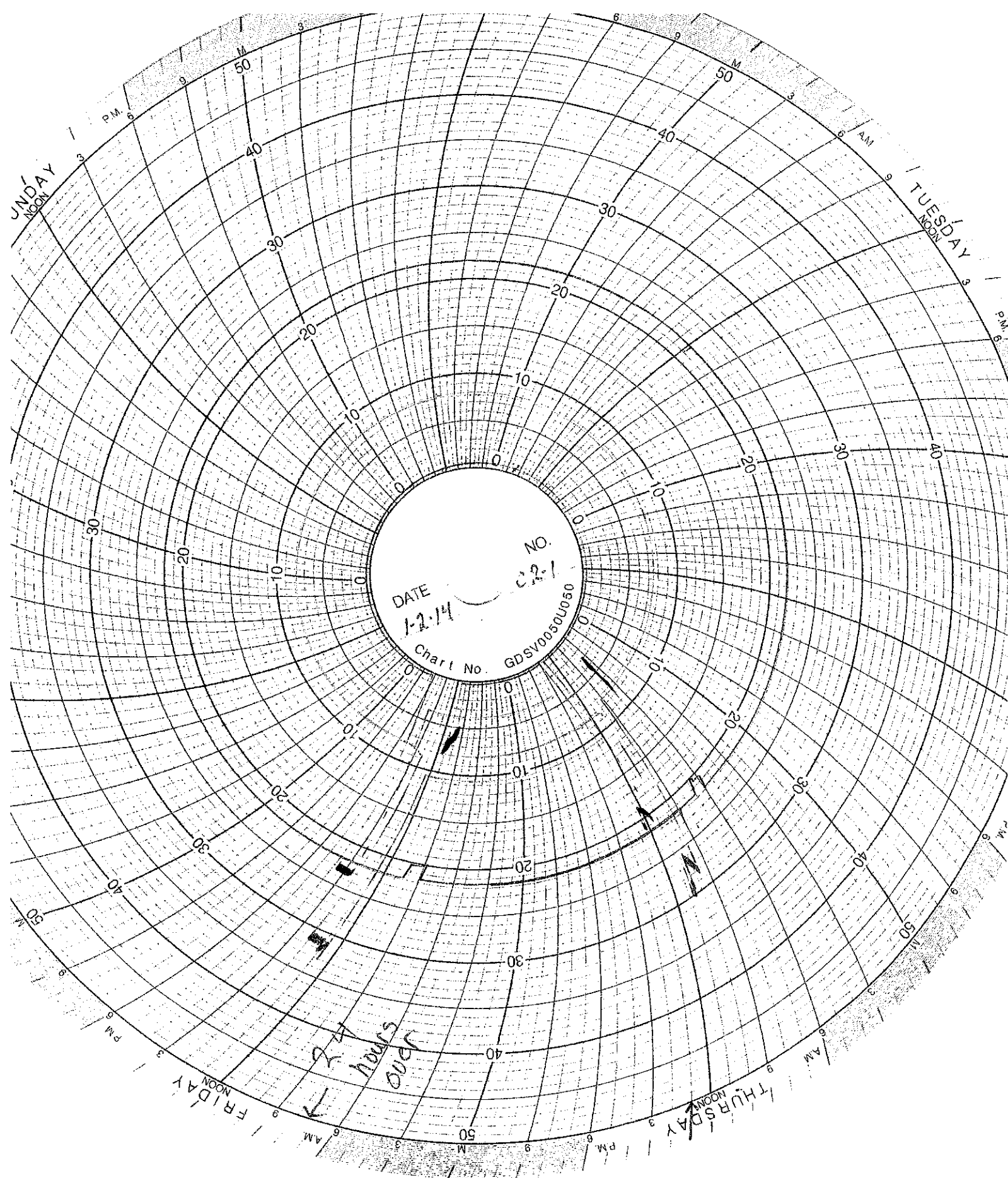
Red Pen – Well 1 Monthly Volume

Channel #3

Green Pen – Well 2 Monthly Volume

Channel #4

Black Pen - Temperature

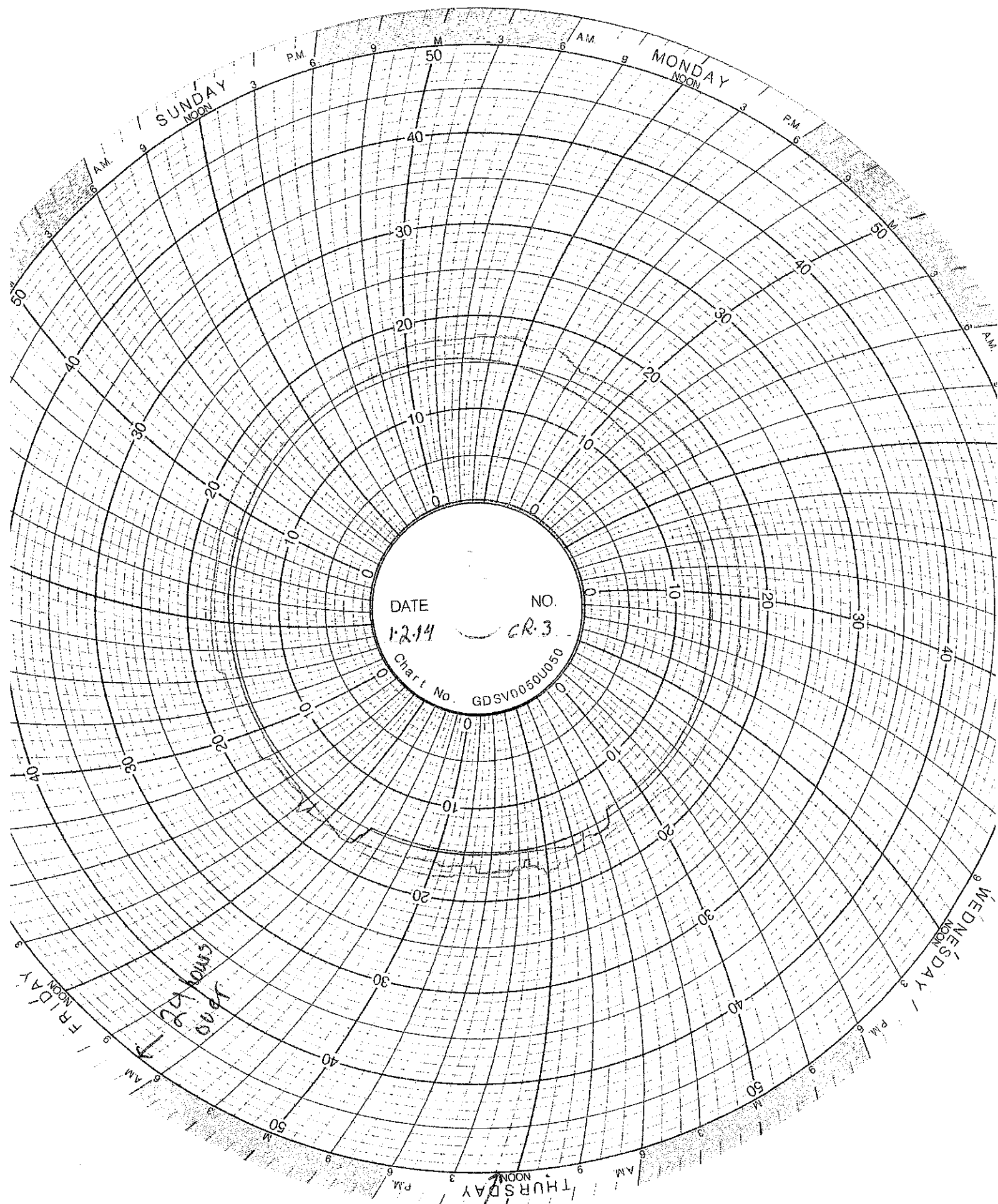


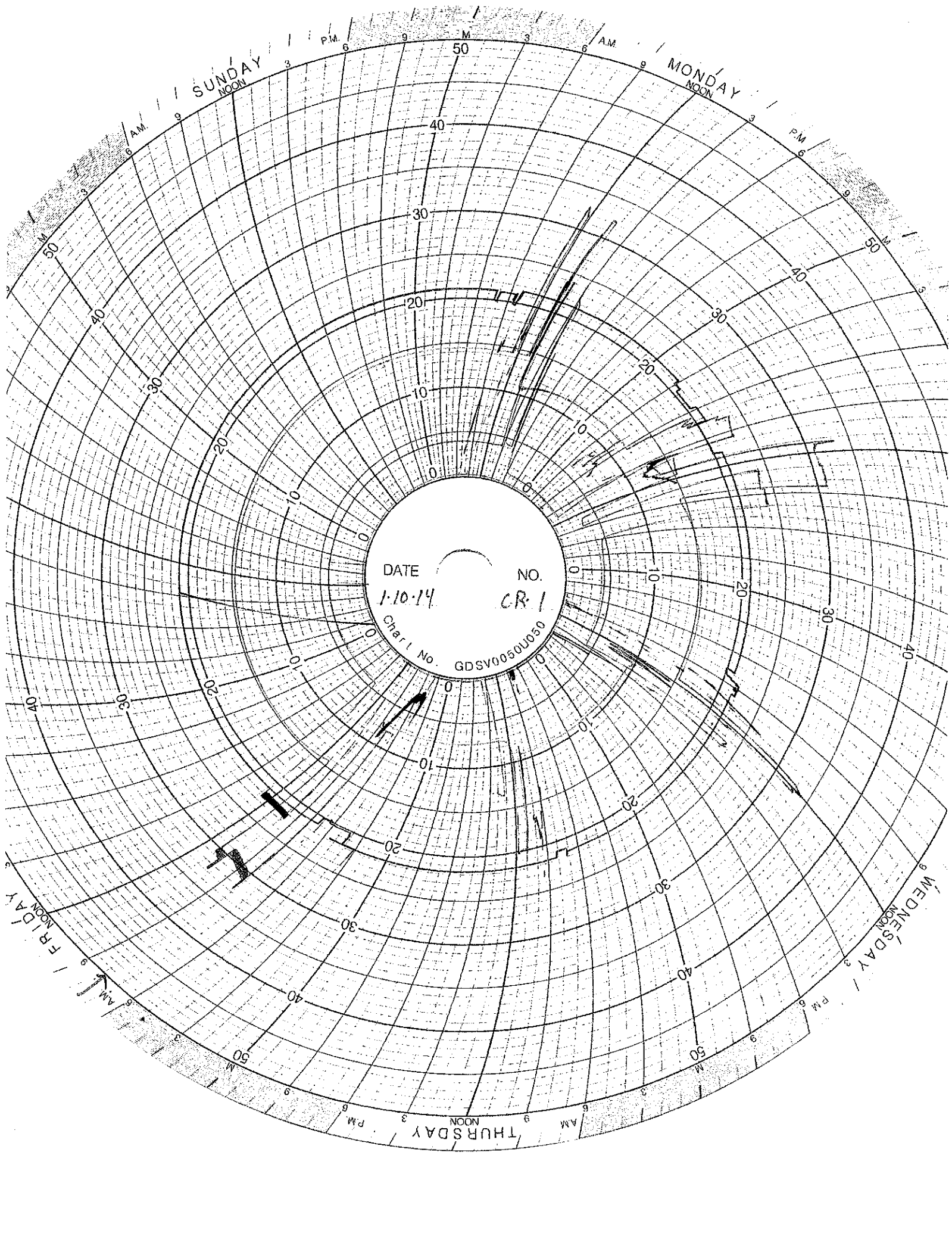
DATE
1-2-14

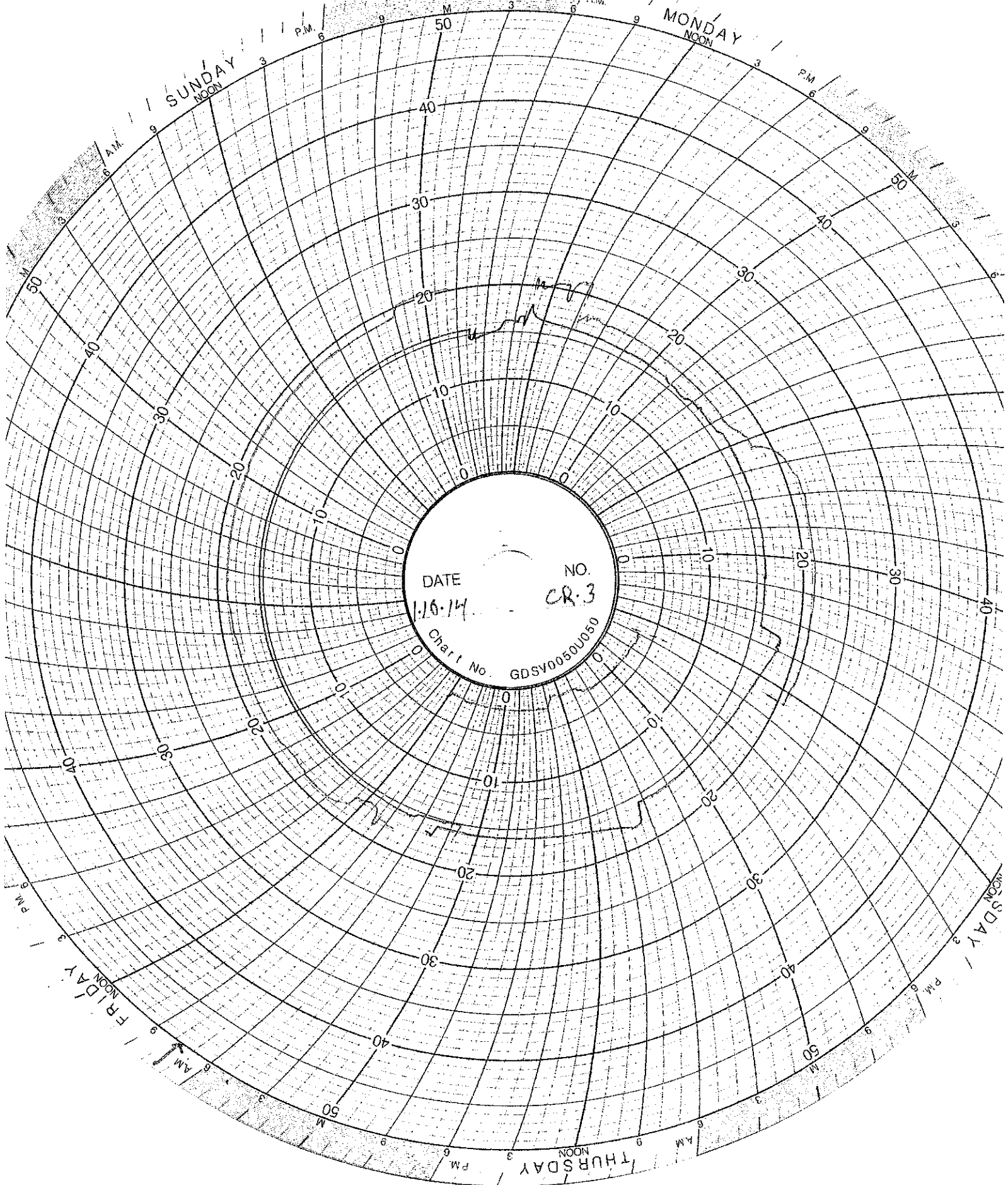
NO.
C-2-1

Chart No. GDSV0050U050

2-4 hours over







DATE

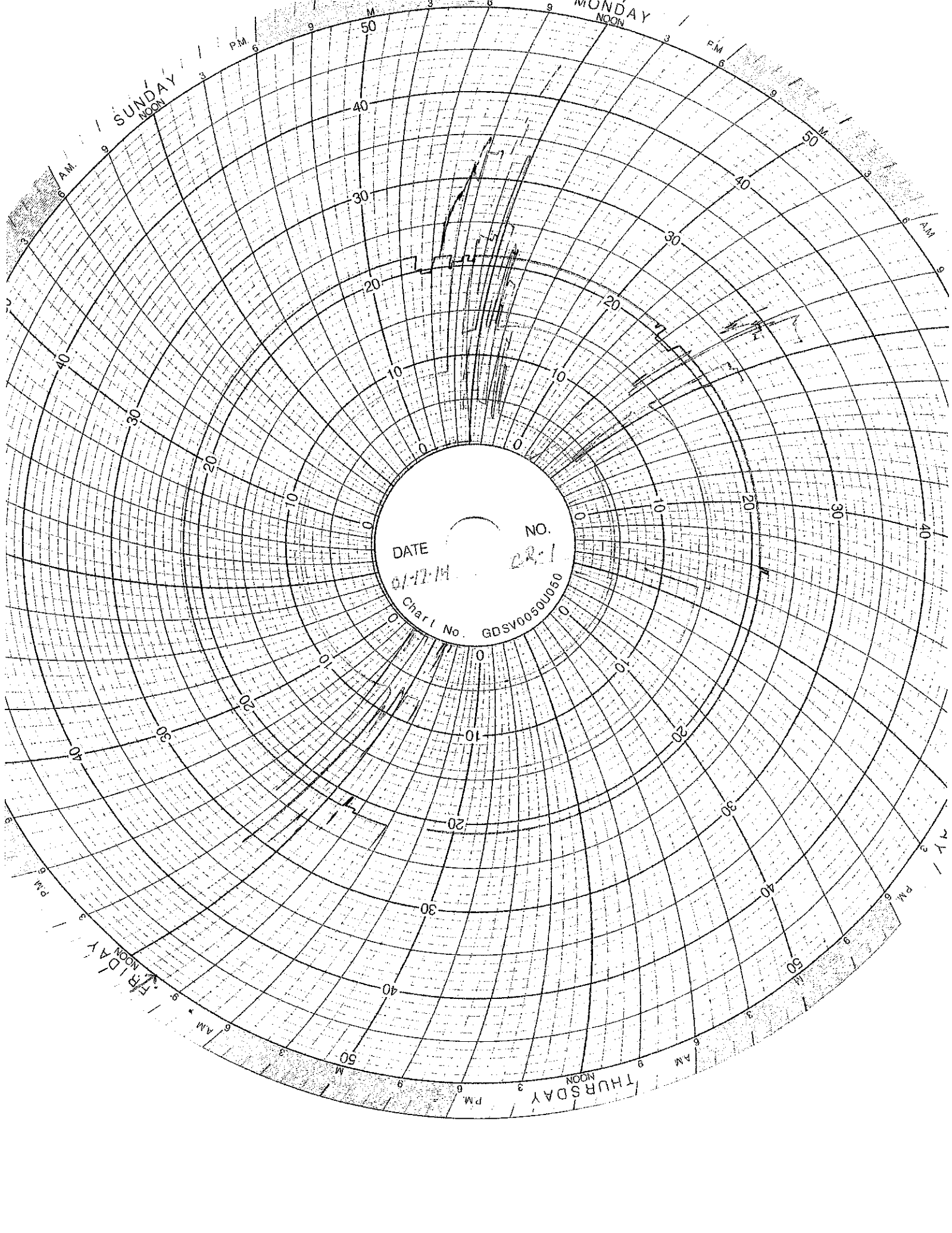
NO.

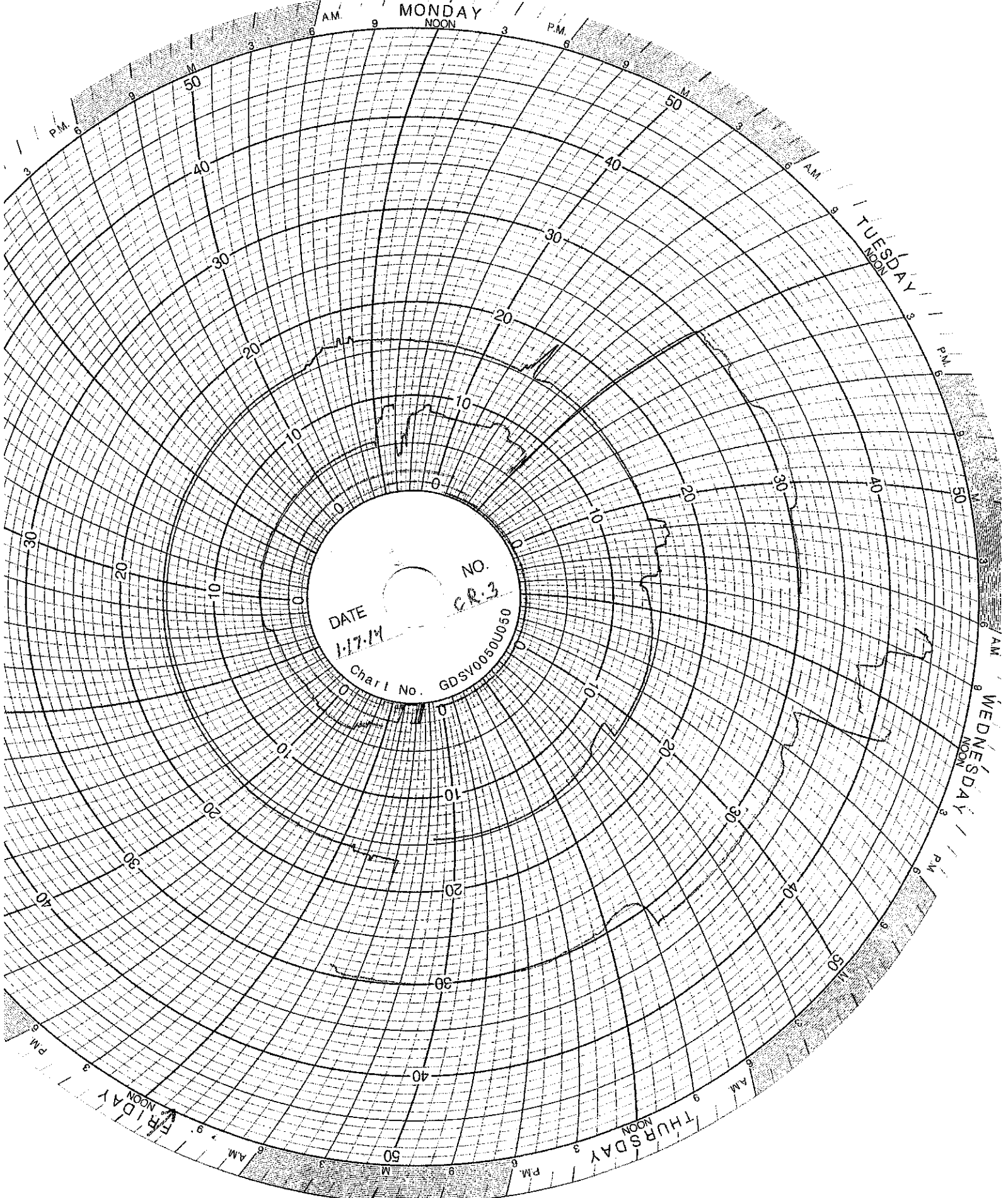
1.16.14

CR.3

Chart No.

GDSV0050U060





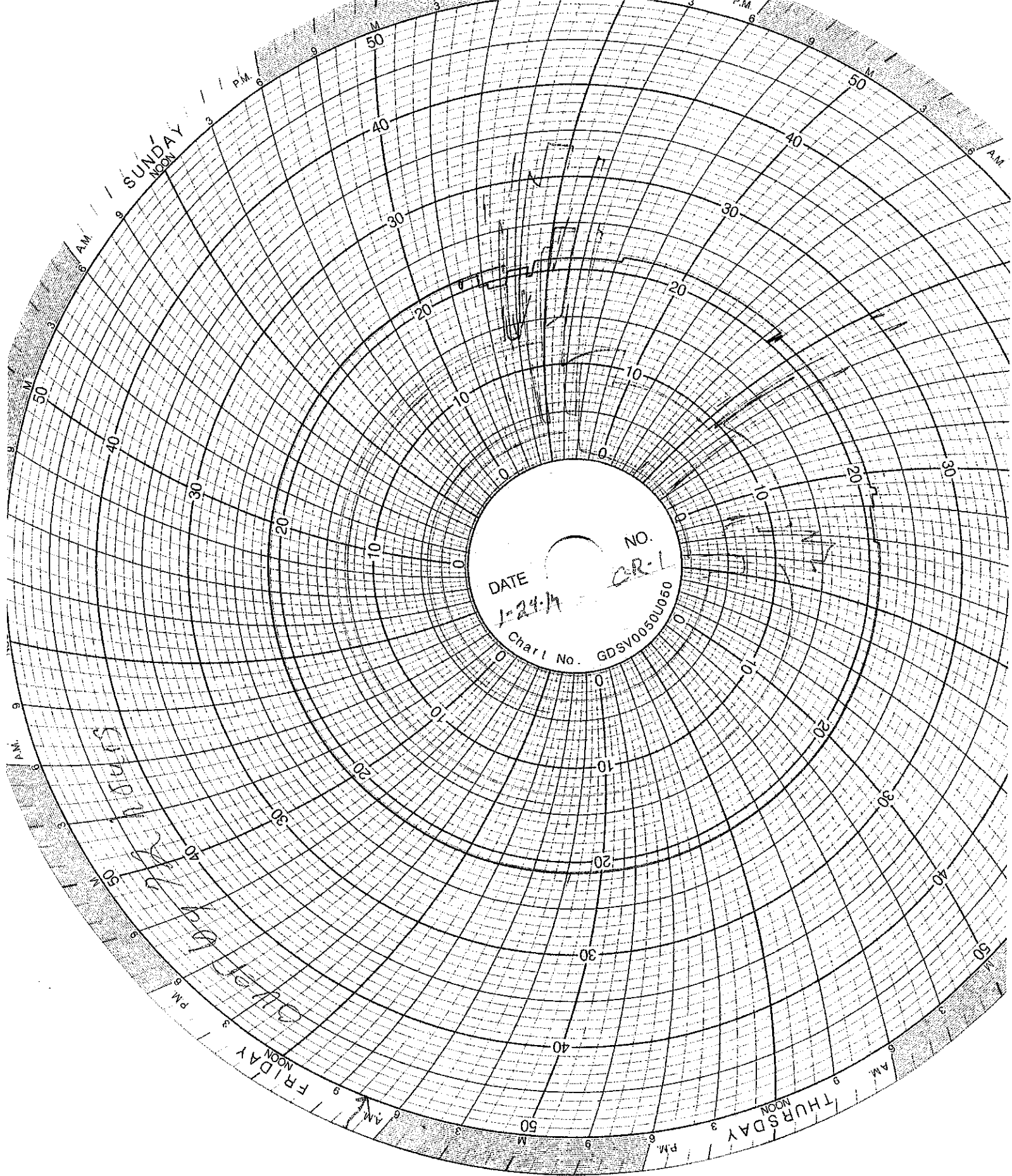
DATE

1-17-14

NO.

CR-3

Chart No. GDSV0050U050



DATE

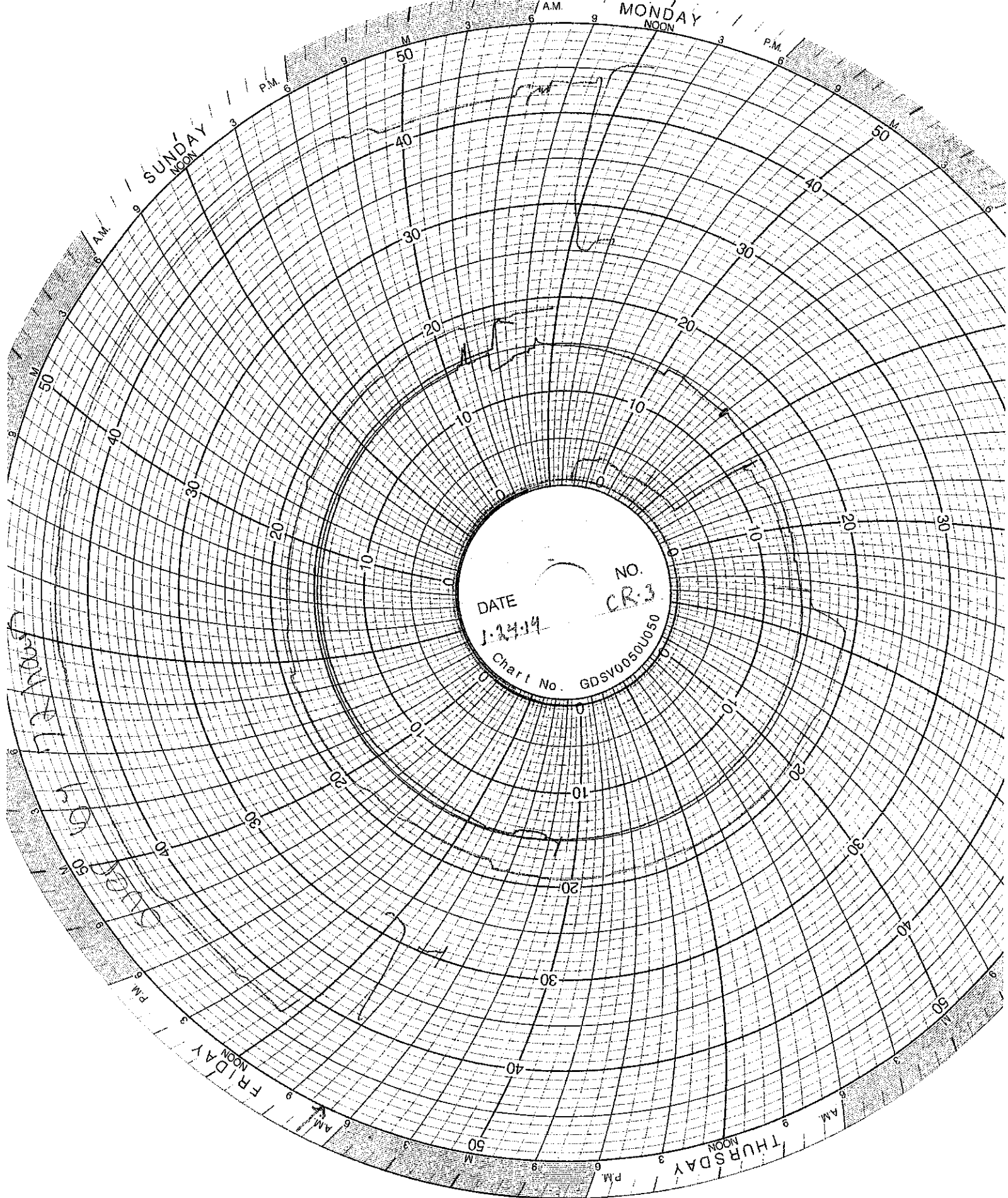
1-24-74

NO.

CR-1

Chart No.

GDSV0050U050



DATE

1-24-14

NO.

CR-3

Chart No.

GDSV0050U050

SUNDAY

MONDAY

THURSDAY

FRIDAY

WELL 2 DATA

SUMMARY OF OPERATING, MONITORING AND REPORTING REQUIREMENTS
Injection Well II

Month: January

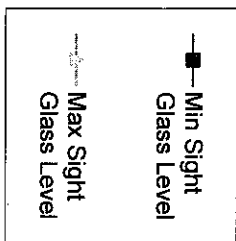
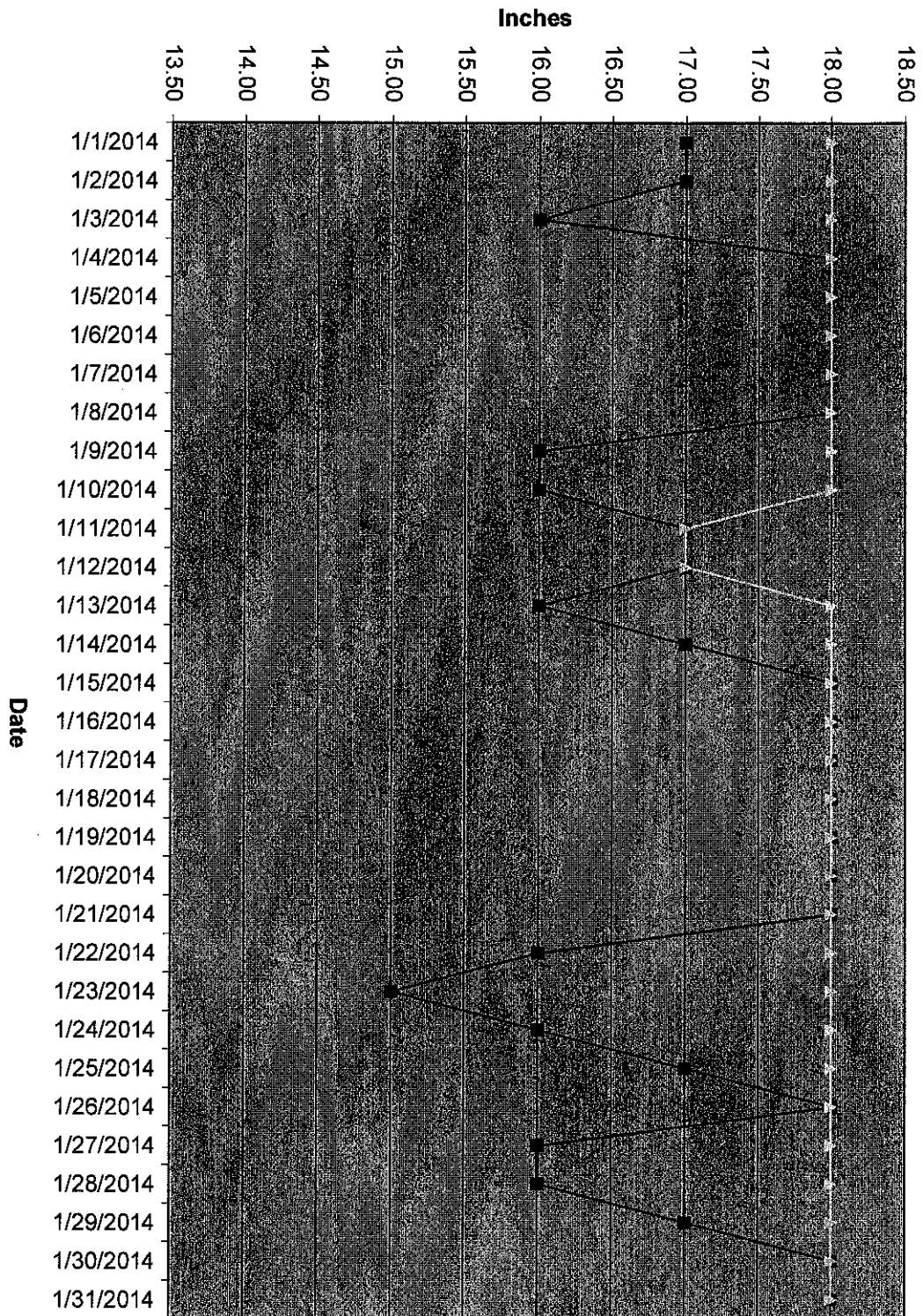
Year: 2014

CHARACTERISTIC	LIMITATION	MINIMUM MONITORING FREQUENCY	MINIMUM REPORTING FREQUENCY	STATUS
Injection Pressure	765 psig maximum	continuous	monthly	736 psig
Annulus Injection Pressure	100 psig minimum	continuous	monthly	264 psig
Annulus/Tubing Diff	100 psig minimum above injection pressure	continuous	monthly	163 psig
Injection Rate (Average both wells)	166 gpm	continuous	monthly	3.1 gpm
Injection Rate (Maximum instantaneous)	270 gpm	continuous	monthly	122 gpm
Sight Glass Level		continuous	monthly	Graph attached
Annulus Fluid Loss		monthly	monthly	0.0 gal
Cumulative Volume		daily	monthly	94,671 gal
Temperature		6-hour intervals	monthly	Graph attached
Corrosion Monitoring		monthly	monthly	Report attached
Repair and Maintenance		NA	monthly	Log attached
Toxicity Characteristic List		annually	monthly	NA
Fingerprint Analysis		per load	monthly	Sheets attached
Chemical Composition and Physical Characteristics of Injected Oilfield Brine		annually	annually	NA
pH of Injected Fluids		continuous	monthly	Graph attached

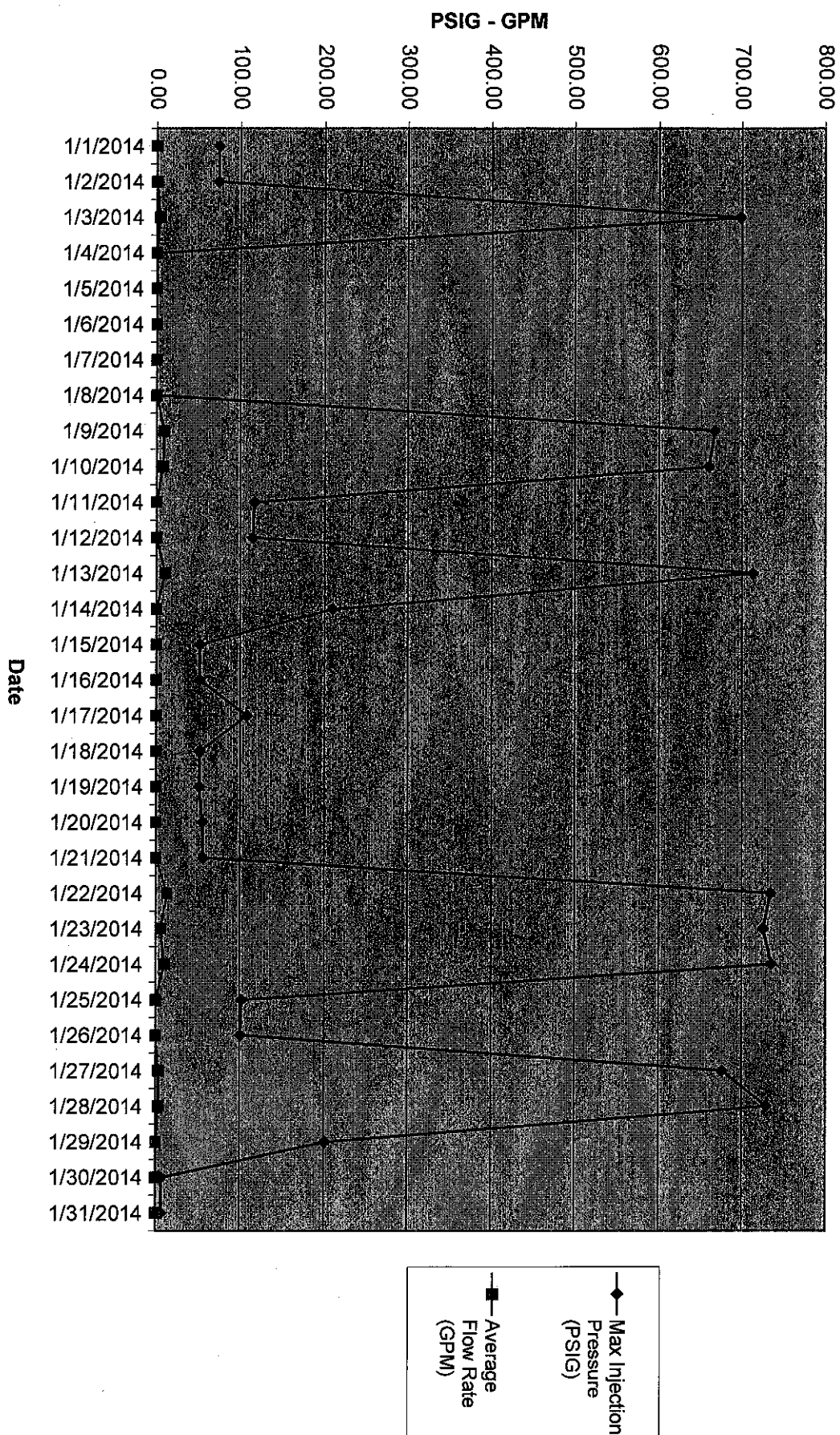
Well 02 Monthly Data

Date	Min Injection Pressure (PSIG)	Max Injection Pressure (PSIG)	Min Sight Glass Level (in)	Max Sight Glass Level (in)	Min Annulus Pressure (PSIG)	Max Annulus Pressure (PSIG)	Min Injectate pH	Max Injectate pH	Min Flow Rate (GPM)	Max Flow Rate (GPM)	Avg Flow Rate (GPM)	Min Differential Pressure (PSIG)	Max Differential Pressure (PSIG)
1/1/2014	73.50	74.30	17.00	18.00	420.56	422.23	4.58	4.79	0.00	0.00	0.00	347.00	347.96
1/2/2014	73.10	73.61	17.00	18.00	418.02	420.64	4.68	5.03	0.00	0.00	0.00	344.82	347.12
1/3/2014	0.17	698.00	16.00	18.00	274.77	956.41	4.58	5.31	0.00	111.34	3.90	193.51	349.13
1/4/2014	0.17	0.17	18.00	18.00	272.51	274.81	4.93	5.23	0.00	0.00	0.00	272.34	274.64
1/5/2014	0.17	0.17	18.00	18.00	271.35	272.60	5.18	5.26	0.00	0.00	0.00	271.17	272.42
1/6/2014	0.01	0.26	18.00	18.00	265.99	278.87	4.76	5.25	0.00	34.33	0.01	265.98	278.70
1/7/2014	0.01	0.01	18.00	18.00	266.33	267.22	4.87	5.08	0.00	0.00	0.00	266.32	267.21
1/8/2014	0.01	0.01	18.00	18.00	265.95	266.89	4.85	5.12	0.00	0.00	0.00	265.94	266.89
1/9/2014	0.01	667.29	16.00	18.00	265.04	970.30	4.85	5.34	0.00	122.47	9.12	195.71	349.97
1/10/2014	110.61	660.41	16.00	18.00	310.72	958.69	4.73	5.60	0.00	88.60	7.86	194.93	349.95
1/11/2014	114.23	116.65	17.00	17.00	451.88	457.62	5.51	5.68	0.00	0.00	0.00	337.62	341.50
1/12/2014	113.44	114.30	17.00	17.00	444.98	451.93	5.64	6.06	0.00	0.00	0.00	331.43	337.70
1/13/2014	57.44	712.78	16.00	18.00	278.88	1004.89	4.77	6.35	0.00	102.57	10.13	187.34	350.32
1/14/2014	49.58	210.02	17.00	18.00	290.27	515.43	5.02	6.36	0.00	32.31	0.19	198.20	347.91
1/15/2014	49.95	51.55	18.00	18.00	297.97	299.07	0.68	6.32	0.00	0.00	0.00	247.29	248.38
1/16/2014	50.10	51.69	18.00	18.00	297.32	298.17	0.40	0.86	0.00	0.00	0.00	246.34	247.70
1/17/2014	50.23	107.50	18.00	18.00	296.84	325.92	0.60	1.25	0.00	19.06	0.01	218.42	247.65
1/18/2014	50.55	51.21	18.00	18.00	294.91	296.92	1.01	1.50	0.00	0.00	0.00	244.29	245.78
1/19/2014	50.34	50.68	18.00	18.00	294.45	295.00	1.45	1.58	0.00	0.00	0.00	243.88	244.39
1/20/2014	50.01	54.90	18.00	18.00	294.19	296.83	1.03	2.67	0.00	0.00	0.00	241.65	244.31
1/21/2014	51.98	55.92	18.00	18.00	292.51	295.16	1.49	9.39	0.00	0.00	0.00	238.41	242.24
1/22/2014	1.82	734.72	16.00	18.00	270.21	1010.61	8.87	13.33	0.00	113.74	13.40	187.35	349.99
1/23/2014	88.64	725.64	15.00	18.00	307.72	1026.64	8.40	11.01	0.00	56.95	5.72	196.80	367.18
1/24/2014	87.29	735.58	16.00	18.00	297.51	1022.58	8.13	12.93	0.00	55.56	10.00	193.98	349.93
1/25/2014	70.75	102.21	17.00	18.00	294.81	451.22	12.83	12.97	0.00	0.00	0.00	202.90	349.96
1/26/2014	97.95	100.46	18.00	18.00	305.84	306.89	12.39	12.96	0.00	0.00	0.00	205.58	208.91
1/27/2014	0.22	676.93	16.00	18.00	275.72	958.24	0.17	13.10	0.00	50.56	3.01	163.15	358.34
1/28/2014	0.00	729.23	16.00	18.00	266.33	1006.21	0.67	3.93	0.00	55.33	3.34	189.15	365.58
1/29/2014	0.43	200.99	17.00	18.00	264.37	502.87	3.25	5.60	0.00	16.42	0.16	201.74	335.58
1/30/2014	6.45	6.92	18.00	18.00	273.76	274.78	5.50	5.67	0.00	0.00	0.00	266.89	268.26
1/31/2014	6.02	6.55	18.00	18.00	274.64	275.58	5.31	5.68	0.00	0.00	0.00	268.10	269.40

Well 2 Min/Max Sight Glass Level Chart



Well 2 Max Injection Pressure and Avg. Flow Rate



Circle Chart Index

Environmental Geo-Technologies, LLC 28470 Citrin Drive Romulus, MI 48174

Chart Recorder #1

Channel #1

Blue Pen - Well 1 Injection Pressure

Channel #2

Red Pen – Well 1 Annulus Pressure

Channel #3

Green Pen – Well 1 Flow Rate

Channel #4

Black Pen – Well 1 Annulus Tank Level

Chart Recorder #2

Channel #1

Blue Pen – Well 2 Injection Pressure

Channel #2

Red Pen – Well 2 Annulus Pressure

Channel #3

Green Pen – Well 2 Flow Rate

Channel #4

Black Pen – Well 2 Annulus Tank Level

Chart Recorder #3

Channel #1

Blue Pen – Injection pH Well 1 & 2

Channel #2

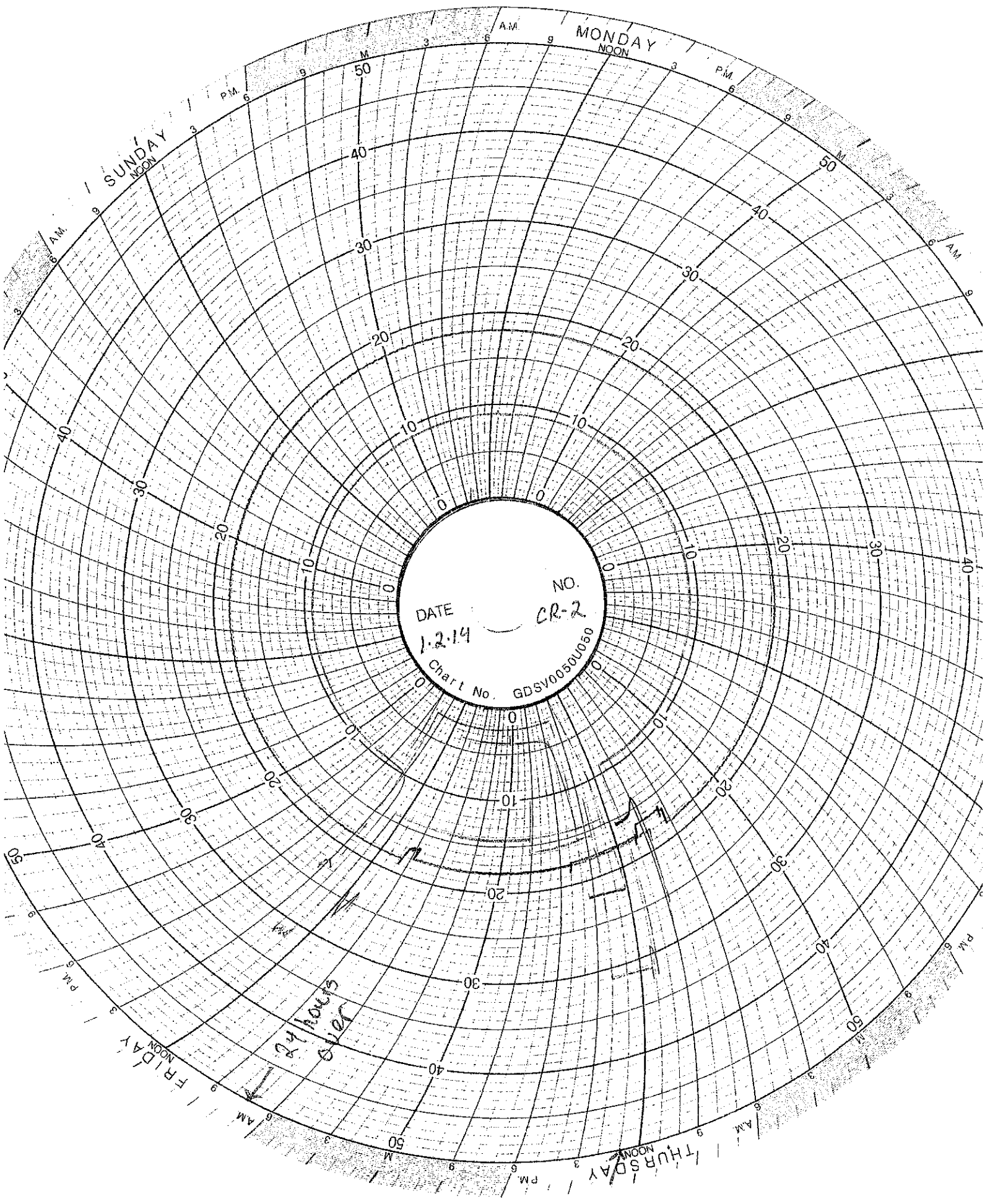
Red Pen – Well 1 Monthly Volume

Channel #3

Green Pen – Well 2 Monthly Volume

Channel #4

Black Pen - Temperature

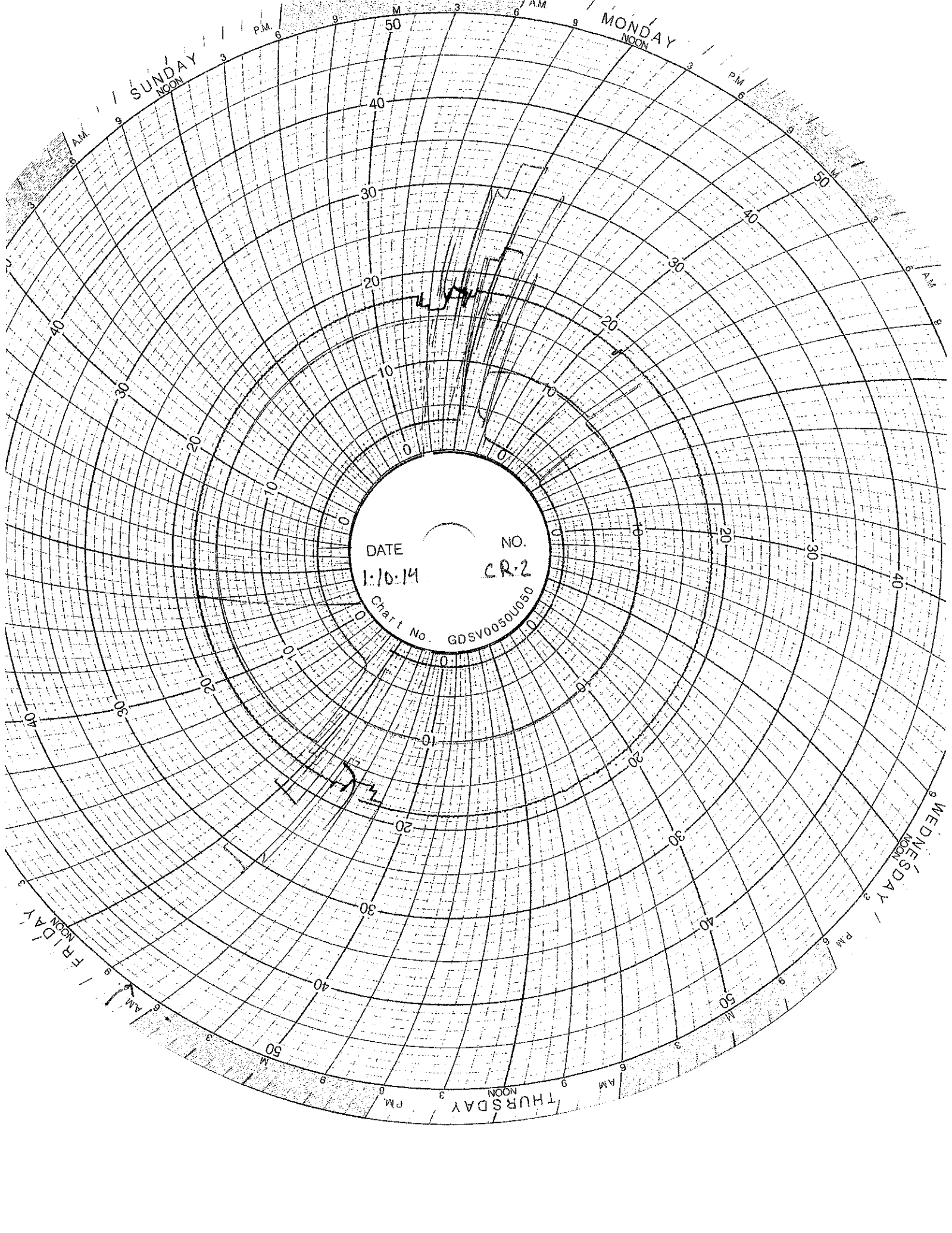


DATE
1-2-14

NO.
CR-2

Chart No. GDSV0050U050

24 hours
over



DATE

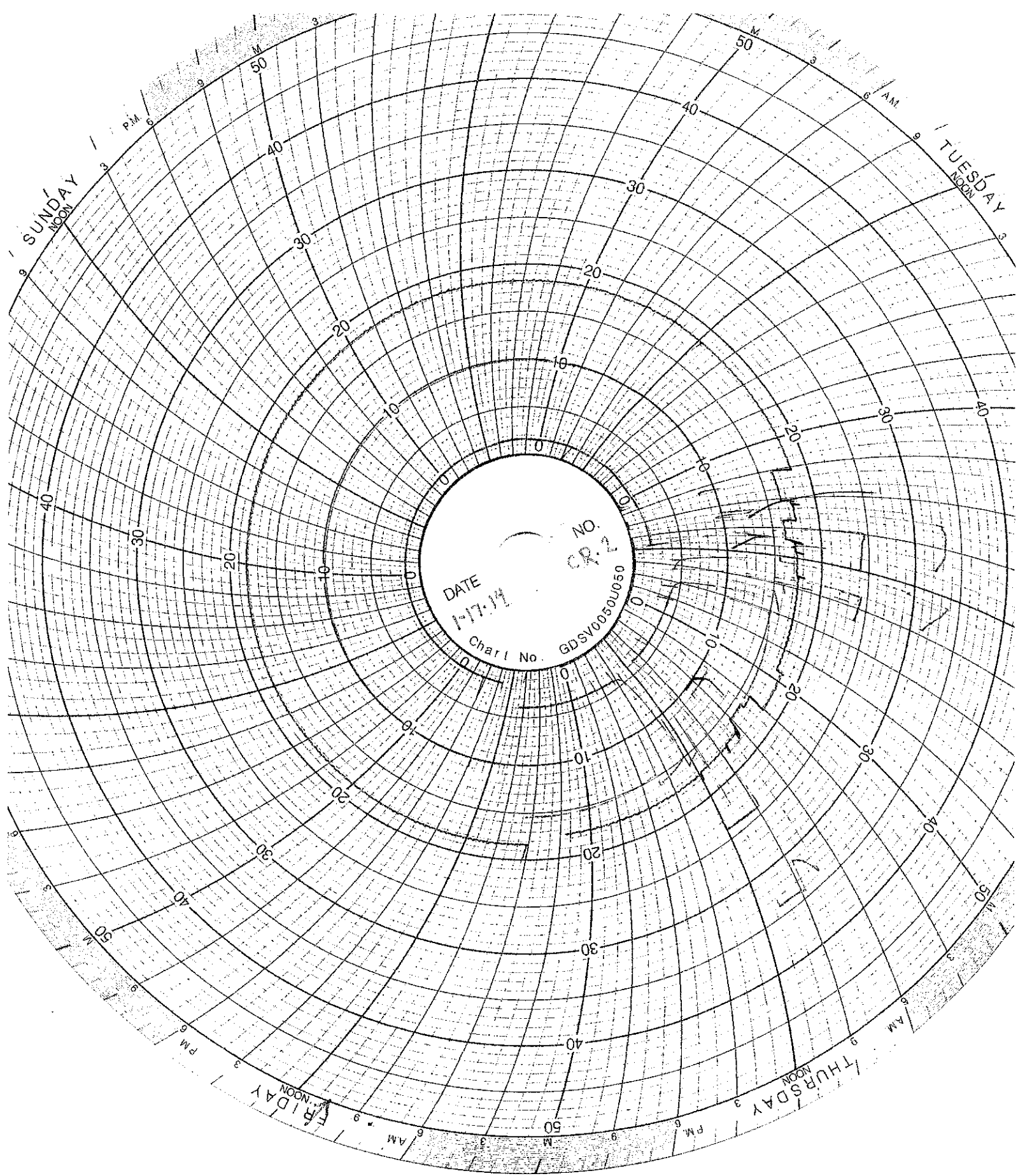
1:10:14

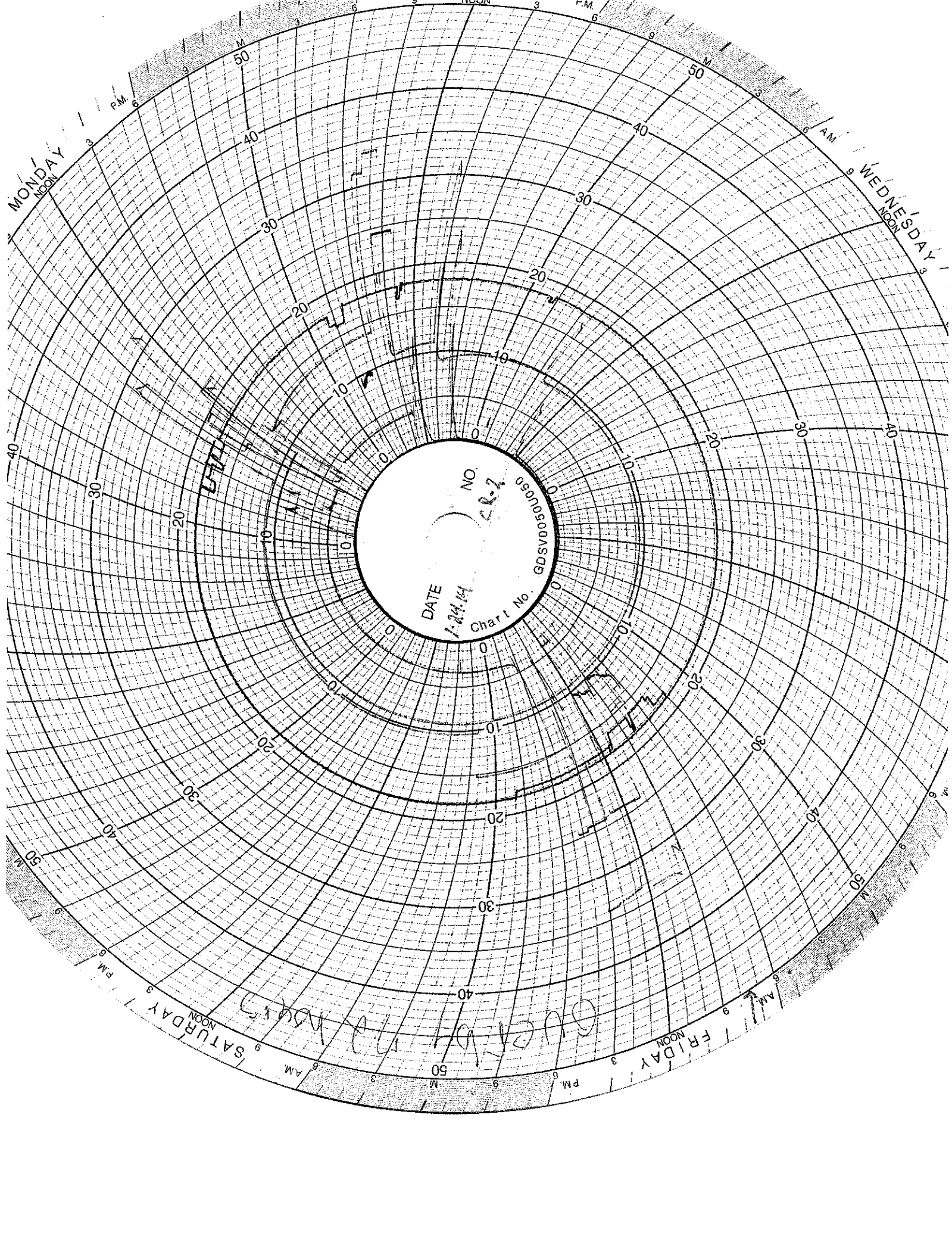
NO.

CR-2

Chart No.

GDSV0050U050





DATE

1-24-14

Chart No.

09070050060

NO.

28-2

GUEST

CORROSION MONITORING

CORROSION MONITORING COUPONS BASELINE VISUAL DESCRIPTION

November 4, 2013

Fiberglass

The fiberglass coupon is Red Box 2000 type and is 2-1/2 inches long by 1/2 inch wide and 1/4 inches thick. It is a dark orange (rust) in color with a glossy shine on one side a polished look on the opposite side and the cut edges look sanded.

Hastelloy

The hastelloy coupon is identified as C276 with serial number 1. The dimensions of the coupon are 3 inches long by 1/2 inch wide and 1/4 inch thick. The coupon is silver in color with a lightly sandblasted surface.

Stainless Steel

The stainless steel coupon is identified as 316L with serial number C1562. The dimensions of the coupon are 3 inches long by 1/2 inch wide and 1/4 inch thick. The coupon is silver in color with a lightly sandblasted surface.

Ghesquiere Plastic Testing, Inc.

20450 HARPER AVENUE
HARPER WOODS, MI 48225
PHONE (313) 885-3535
FAX (313) 885-1771

Report Date: November 15, 2013
Test Date: October 15 - November 14, 2013

Report #1310-77651
Performed for:
Environmental Geo-Technologies
28470 Citrin Drive
Romulus, MI 48174

Attention: Mr. Don Anderson

WORK REQUESTED:

Perform Barcol Hardness test on sample submitted.

DESCRIPTION OF SAMPLE:

Sample submitted was identified as a fiberglass test coupon.

(P. O. #Credit Card).

WORK PERFORMED:

Test specimen was prepared as necessary and conditioned for a minimum of 24 hours at standard laboratory conditions prior to testing.

Barcol Hardness test was performed in accordance with the procedures of ASTM D2583-13. One specimen was tested.

RESULTS:

The following determination was made based upon the above test:

BARCOL HARDNESS

Hardness

Specimen 1	90
------------	----

Specimen is being returned with this report for further evaluation.

Ghesquiere Plastic Testing, Inc.


M. W. Ghesquiere
President

MWG/kni

Fiberglass Coupon

Date: 08/06/2013

Wt.: 7.309 Grams

Prior to Waste Exposure

316L
C1562

Stainless Steel Coupon

ID: 316L / C1562

Date: 08/06/2013

Wt.: 10.848 grams

Prior to Waste Exposure

C276

1

Hastelloy Coupon

ID: C267 (1)

Date: 08/06/2013

Wt.: 13.330 Grams

Prior to Waste Exposure

CORROSION MONITORING COUPONS VISUAL DESCRIPTION

February 21, 2013

Fiberglass

No change from baseline observation.

Hastelloy

No change from baseline observation.

Stainless Steel

No change from baseline observation.

Ghesquiere Plastic Testing, Inc.

20450 HARPER AVENUE
HARPER WOODS, MI 48225
PHONE (313) 885-3535
FAX (313) 885-1771

Report Date: February 17, 2014
Test Date: February 14 - 17, 2014

Report #1402-78036
Performed for:
Environmental Geo-Technologies
28470 Citrin Drive
Romulus, MI 48174

Attention: Mr. Don Anderson

WORK REQUESTED:

Perform Barcol Hardness test on sample submitted.

DESCRIPTION OF SAMPLE:

Sample submitted was identified as a fiberglass test coupon.

(P. O. #Credit Card).

WORK PERFORMED:

Test specimen was prepared as necessary and conditioned for a minimum of 24 hours at standard laboratory conditions prior to testing.

Barcol Hardness test was performed in accordance with the procedures of ASTM D2583-13. One specimen was tested.

RESULTS:

The following determination was made based upon the above test:

BARCOL HARDNESS

Hardness

Specimen 1 90

Specimen was returned to the client on February 17, 2014.

Ghesquiere Plastic Testing, Inc.

M. W. Ghesquiere
President

MWG/dm



Fiberglass Coupon

Date: 2/21/14

Weight: 7.306 grams

C276

1

Hastelloy Coupon

Date: 2/21/14

ID: C267(1)

Weight: 13.329 grams

316L
C1562

Stainless Steel Coupon

Date: 2/21/14

ID: 316L/# C1562

Weight: 10.846 grams

MAINTENANCE LOG

UIC Monthly Maintenance Log

1/8/2014	Well 2 Sample Port	Well 2 sample port, existing on the discharge side of the injection pump, was removed from the pipe to evaluate. The sample port was weeping from a threaded connection and needs to be rebuilt. Currently a threaded plug was installed in its place until the new piece is ready.
1/17/2014	Totalizers and Operational Set points	Utilities Instrumentation Services (UIS) is on site to get the flow totalizers operational. Flow rates are being recorded but total gallons accumulation are not recording. Additionally, UIC is changing operational presets for warning alarms and shut down alarms to allow less constricted operations of well injections while still protecting operations from exceeding compliance conditions.
1/28/2014	Injection Well Heat Trace	The weather has been so cold this winter that the heaters in the wellhead building are working so hard that they are tripping the circuit breakers. Heat trace was purchased, installed and insulated on both wellhead I & II.

**INJECTION
FINGERPRINTS**

FINGERPRINT FORM

ENVIRONMENTAL GEO-TECHNOLOGIES, LLC.

RECEIVING & APPROVAL FORM

RECEIVING INFORMATION	
Date	01/03/14
Receiving ID#	101031401
Manifest# Line:	
Land Ban Cert included	Yes No
EGT Approval #	A
Generator	EGT
Client	
Transporter	
Time in	
Time out	
Received by	J.H.
Sampled by	DAK

COPY

LAB INFORMATION:		Oilfield Brines Only:	
All Waste Shipments:			
Compatible? (RT#)	Yes No	Barium	
PCBs (ppm)(Oily Waste Only)?		Calcium	
TOC (ppm)(CC Waste Only)?		Total Iron	
Flash Point (°F)	> 140	Magnesium	
pH (S.U.)	5.11	Sodium Chloride	
Cyanides? (mg/L)		Bicarbonate	
Sulfides? (ppm)		Carbonate	
Specific Gravity	1.15	TDS	4,87
Physical Description		Resistivity	
Stream Consistency	Yes No	Sulfate	
Oil in Sample	Yes No		
Temperature	64 °F		
Conductivity	96.2 mS		
% Solids	< 0.1		
Turbidity	Yes No		
Color (visual)			
TSS (%)	< 0.1		
Radiation Screen (as needed)			
Lab Signature	J. E. K.		

FINGERPRINT FORM

ENVIRONMENTAL GEO-TECHNOLOGIES, LLC.

RECEIVING & APPROVAL FORM

RECEIVING INFORMATION

Date	01/09/14
Receiving ID#	101091401
Manifest# Line:	
Land Ban Cert included	Yes No
EGT Approval #	A
Generator	EGT
Client	
Transporter	
Time in	
Time out	
Received by	J.H.
Sampled by	[Signature]

Copy

LAB INFORMATION:

All Waste Shipments:

Oilfield Brines Only:

Compatible? (RT#)	Yes No	Barium	
PCBs (ppm)(Oily Waste Only)?		Calcium	
TOC (ppm)(CC Waste Only)?		Total Iron	
Flash Point (°F)	> 140	Magnesium	
pH (S.U.)	5.5	Sodium Chloride	
Cyanides? (mg/L)		Bicarbonate	
Sulfides? (ppm)		Carbonate	
Specific Gravity	1.01	TDS	0.7%
Physical Description		Resistivity	
Stream Consistency	Yes No	Sulfate	
Oil in Sample	Yes No		
Temperature	60°F		
Conductivity	13.4 mS		
% Solids	< 0.1		
Turbidity	Yes No		
Color (visual)			
TSS (%)	< 0.1		
Radiation Screen (as needed)			
Lab Signature	[Signature]		

FINGERPRINT FORM

ENVIRONMENTAL GEO-TECHNOLOGIES, LLC.

RECEIVING & APPROVAL FORM

RECEIVING INFORMATION	
Date	01/10/14
Receiving ID#	I 01101401
Manifest# Line:	
Land Ban Cert included	Yes No
EGT Approval #	A
Generator	EGT
Client	
Transporter	
Time in	
Time out	
Received by	J.H.
Sampled by	J.H.

COPY

LAB INFORMATION:		Oilfield Brines Only:	
All Waste Shipments:		Barium	
Compatible? (RT#)	(Yes) No	Calcium	
PCBs (ppm)(Oily Waste Only)?		Total Iron	
TOC (ppm)(CC Waste Only)?		Magnesium	
Flash Point (°F)	> 140	Sodium Chloride	
pH (S.U.)	6.33	Bicarbonate	
Cyanides? (mg/L)		Carbonate	
Sulfides? (ppm)		TDS	< 0.1%
Specific Gravity	1.01	Resistivity	
Physical Description		Sulfate	
Stream Consistency	Yes No		
Oil in Sample	Yes No		
Temperature	62°F		
Conductivity	1.5 mS		
% Solids	< 0.1		
Turbidity	Yes No		
Color (visual)			
TSS (%)	< 0.1		
Radiation Screen (as needed)			
Lab Signature	J.P. [Signature]		

FINGERPRINT FORM

ENVIRONMENTAL GEO-TECHNOLOGIES, LLC.

RECEIVING & APPROVAL FORM

RECEIVING INFORMATION	
Date	01/13/14
Receiving ID#	I 01131401
Manifest# Line:	
Land Ban Cert included	Yes No
EGT Approval #	A
Generator	EGT
Client	
Transporter	
Time in	
Time out	
Received by	J.H.
Sampled by	DLR

COPY

LAB INFORMATION:		Oilfield Brines Only:	
All Waste Shipments:			
Compatible? (RT#)	Yes No	Barium	
PCBs (ppm)(Oily Waste Only)?		Calcium	
TOC (ppm)(CC Waste Only)?		Total Iron	
Flash Point (°F)	> 140	Magnesium	
pH (S.U.)	6.7	Sodium Chloride	
Cyanides? (mg/L)		Bicarbonate	
Sulfides? (ppm)		Carbonate	
Specific Gravity	1.01	TDS	< 0.1
Physical Description		Resistivity	
Stream Consistency	Yes No	Sulfate	
Oil in Sample	Yes No		
Temperature	55		
Conductivity	1.4 mS		
% Solids	< 0.1		
Turbidity	Yes No		
Color (visual)			
TSS (%)	< 0.1		
Radiation Screen (as needed)			
Lab Signature		J.P. White	

FINGERPRINT FORM

ENVIRONMENTAL GEO-TECHNOLOGIES, LLC.

RECEIVING & APPROVAL FORM

RECEIVING INFORMATION	
Date	01/13/14
Receiving ID#	I 01131402
Manifest# Line:	
Land Ban Cert included	Yes No
EGT Approval #	A
Generator	EGT
Client	
Transporter	
Time in	
Time out	
Received by	J.H.
Sampled by	D.H.

Copy

LAB INFORMATION:		Oilfield Brines Only:	
All Waste Shipments:			
Compatible? (RT#)	Yes No	Barium	
PCBs (ppm)(Oily Waste Only)?	Yes No	Calcium	
TOC (ppm)(CC Waste Only)?		Total Iron	
Flash Point (°F)	140	Magnesium	
pH (S.U.)	5.0	Sodium Chloride	
Cyanides? (mg/L)		Bicarbonate	
Sulfides? (ppm)		Carbonate	
Specific Gravity	1.07	TDS	3.27
Physical Description		Resistivity	
Stream Consistency	Yes No	Sulfate	
Oil in Sample	Yes No		
Temperature	64°F		
Conductivity	65.5 mS		
% Solids	< 0.1		
Turbidity	Yes No		
Color (visual)			
TSS (%)	< 0.1		
Radiation Screen (as needed)			
Lab Signature			

J.P. 10/14

FINGERPRINT FORM

ENVIRONMENTAL GEO-TECHNOLOGIES, LLC.

RECEIVING & APPROVAL FORM

RECEIVING INFORMATION

Date	01/14/14	
Receiving ID#	I 01141401	
Manifest#	Line:	
Land Ban Cert included	Yes	No
EGT Approval #		
Generator		
Client		
Transporter		
Time in		
Time out		
Received by	J.H.	
Sampled by	DA	

COPY

received
1-14-14 @ 12:00 P

LAB INFORMATION:

All Waste Shipments:

Oilfield Brines Only:

Compatible? (RT#)	Yes	No	Barium	
PCBs (ppm)(Oily Waste Only)?			Calcium	
TOC (ppm)(CC Waste Only)?			Total Iron	
Flash Point (°F)	> 140		Magnesium	
pH (S.U.)	6.0		Sodium Chloride	
Cyanides? (mg/L)			Bicarbonate	
Sulfides? (ppm)			Carbonate	
Specific Gravity	1.00		TDS	0.2%
Physical Description			Resistivity	
Stream Consistency	Yes	No	Sulfate	
Oil in Sample	Yes	No		
Temperature	61°F			
Conductivity	3.0 mS			
% Solids	< 0.1			
Turbidity	Yes	No		
Color (visual)				
TSS (%)	< 0.1			
Radiation Screen (as needed)				

Lab Signature

FINGERPRINT FORM

ENVIRONMENTAL GEO-TECHNOLOGIES, LLC.

RECEIVING & APPROVAL FORM

RECEIVING INFORMATION

Date	01/15/14
Receiving ID#	101151401
Manifest# Line:	
Land Ban Cert included	Yes No
EGT Approval #	A
Generator	EGT
Client	
Transporter	
Time in	
Time out	
Received by	J.H.
Sampled by	N.H.

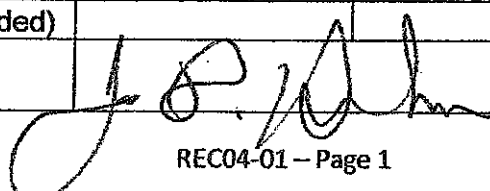
COPY

received

LAB INFORMATION:

All Waste Shipments:

Oilfield Brines Only:

Compatible? (RT#)	Yes No	Barium	
PCBs (ppm)(Oily Waste Only)?		Calcium	
TOC (ppm)(CC Waste Only)?		Total Iron	
Flash Point (°F)	> 140	Magnesium	
pH (S.U.)	1.2	Sodium Chloride	
Cyanides? (mg/L)		Bicarbonate	
Sulfides? (ppm)		Carbonate	
Specific Gravity	1.16	TDS	1.7%
Physical Description		Resistivity	
Stream Consistency	Yes No	Sulfate	
Oil in Sample	Yes No		
Temperature	65 °F		
Conductivity	230.5 mS		
% Solids	< 0.1		
Turbidity	Yes No		
Color (visual)			
TSS (%)	< 0.1		
Radiation Screen (as needed)			
Lab Signature			

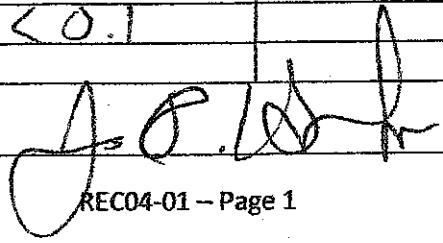
FINGERPRINT FORM

ENVIRONMENTAL GEO-TECHNOLOGIES, LLC.

RECEIVING & APPROVAL FORM

RECEIVING INFORMATION	
Date	01/17/14
Receiving ID#	I 01/17/461
Manifest#	Line:
Land Ban Cert included	Yes No
EGT Approval #	A
Generator	EGT
Client	
Transporter	
Time in	
Time out	
Received by	J.H.
Sampled by	D.H.

COPY

LAB INFORMATION:		Oilfield Brines Only:	
All Waste Shipments:			
Compatible? (RT#)	Yes No	Barium	
PCBs (ppm)(Oily Waste Only)?		Calcium	
TOC (ppm)(CC Waste Only)?		Total Iron	
Flash Point (°F)	140	Magnesium	
pH (S.U.)	3.3	Sodium Chloride	
Cyanides? (mg/L)		Bicarbonate	
Sulfides? (ppm)		Carbonate	
Specific Gravity	1.01	TDS	<0.1%
Physical Description		Resistivity	
Stream Consistency	Yes No	Sulfate	
Oil in Sample	Yes No		
Temperature	61°F		
Conductivity	0.5 mS		
% Solids	<0.1		
Turbidity	Yes No		
Color (visual)			
TSS (%)	<0.1		
Radiation Screen (as needed)			
Lab Signature			

FINGERPRINT FORM

ENVIRONMENTAL GEO-TECHNOLOGIES, LLC.

RECEIVING & APPROVAL FORM

RECEIVING INFORMATION

Date	01/20/14
Receiving ID#	I 01201401
Manifest# Line:	
Land Ban Cert included	Yes No
EGT Approval #	A
Generator	EGT
Client	
Transporter	
Time in	
Time out	
Received by	J. F.
Sampled by	W. H.

COPY

LAB INFORMATION:

All Waste Shipments:

Oilfield Brines Only:

Compatible? (RT#)	Yes No	Barium	
PCBs (ppm)(Oily Waste Only)?		Calcium	
TOC (ppm)(CC Waste Only)?		Total Iron	
Flash Point (°F)	> 140	Magnesium	
pH (S.U.)	1.0	Sodium Chloride	
Cyanides? (mg/L)		Bicarbonate	
Sulfides? (ppm)		Carbonate	
Specific Gravity	1.06	TDS	6.02
Physical Description		Resistivity	
Stream Consistency	Yes No	Sulfate	
Oil in Sample	Yes No		
Temperature	64°F		
Conductivity	119.1 mS		
% Solids	< 0.1		
Turbidity	Yes No		
Color (visual)			
TSS (%)	< 0.1		
Radiation Screen (as needed)			
Lab Signature	J. F. W. H.		

FINGERPRINT FORM

ENVIRONMENTAL GEO-TECHNOLOGIES, LLC.

RECEIVING & APPROVAL FORM

RECEIVING INFORMATION

Date	01/21/14	
Receiving ID#	I 0/21/401	
Manifest#	Line:	
Land Ban Cert included	Yes	No
EGT Approval #		
Generator		
Client		
Transporter		
Time in		
Time out		
Received by	J.H.	
Sampled by	E.H.	

COPY

LAB INFORMATION:

All Waste Shipments:

Oilfield Brines Only:

Compatible? (RT#)	Yes	No	Barium	
PCBs (ppm)(Oily Waste Only)?			Calcium	
TOC (ppm)(CC Waste Only)?			Total Iron	
Flash Point (°F)	> 140		Magnesium	
pH (S.U.)	6.8		Sodium Chloride	
Cyanides? (mg/L)			Bicarbonate	
Sulfides? (ppm)			Carbonate	
Specific Gravity	1.0		TDS	0.2%
Physical Description			Resistivity	
Stream Consistency	Yes	No	Sulfate	
Oil in Sample	Yes	No		
Temperature	56°F			
Conductivity	3.4 mS			
% Solids	< 0.1			
Turbidity	Yes	No		
Color (visual)				
TSS (%)	< 0.1			
Radiation Screen (as needed)				
Lab Signature	J.E. [Signature]			

FINGERPRINT FORM

ENVIRONMENTAL GEO-TECHNOLOGIES, LLC.

RECEIVING & APPROVAL FORM

RECEIVING INFORMATION

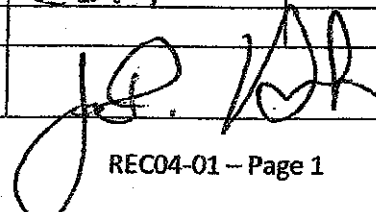
Date	01/21/14	
Receiving ID#	I 01211402	
Manifest#	Line:	
Land Ban Cert included	Yes	No
EGT Approval #	A	
Generator	EGT	
Client		
Transporter		
Time in		
Time out		
Received by	J.H.	
Sampled by	J.H.	

COPY

LAB INFORMATION:

All Waste Shipments:

Oilfield Brines Only:

Compatible? (RT#)	Yes	No	Barium	
PCBs (ppm)(Oily Waste Only)?			Calcium	
TOC (ppm)(CC Waste Only)?			Total Iron	
Flash Point (°F)	140		Magnesium	
pH (S.U.)	13.2		Sodium Chloride	
Cyanides? (mg/L)			Bicarbonate	
Sulfides? (ppm)			Carbonate	
Specific Gravity	1.02		TDS	2.12
Physical Description			Resistivity	
Stream Consistency	Yes	No	Sulfate	
Oil in Sample	Yes	No		
Temperature	65°F			
Conductivity	42.0 mS			
% Solids	20.1			
Turbidity	Yes	No		
Color (visual)				
TSS (%)	20.1			
Radiation Screen (as needed)				
Lab Signature				

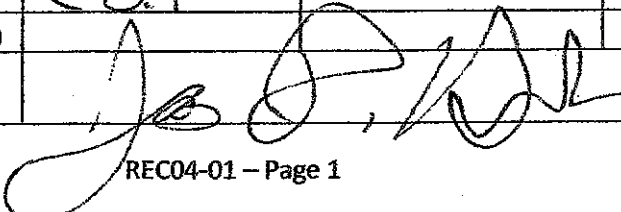
FINGERPRINT FORM

ENVIRONMENTAL GEO-TECHNOLOGIES, LLC.

RECEIVING & APPROVAL FORM

RECEIVING INFORMATION	
Date	01/22/14
Receiving ID#	101221401
Manifest# Line:	
Land Ban Cert included	Yes No
EGT Approval #	
Generator	
Client	
Transporter	
Time in	
Time out	
Received by	JH
Sampled by	DA

COPY

LAB INFORMATION:		Oilfield Brines Only:	
All Waste Shipments:		Barium	
Compatible? (RT#)	Yes No	Calcium	
PCBs (ppm)(Oily Waste Only)?		Total Iron	
TOC (ppm)(CC Waste Only)?		Magnesium	
Flash Point (°F)	> 140	Sodium Chloride	
pH (S.U.)	12.8	Bicarbonate	
Cyanides? (mg/L)		Carbonate	
Sulfides? (ppm)		TDS	0.4%
Specific Gravity	1.01	Resistivity	
Physical Description		Sulfate	
Stream Consistency	Yes No		
Oil in Sample	Yes No		
Temperature	55°F		
Conductivity	7.7 mS		
% Solids	< 0.1		
Turbidity	Yes No		
Color (visual)			
TSS (%)	< 0.1		
Radiation Screen (as needed)			
Lab Signature			

FINGERPRINT FORM

ENVIRONMENTAL GEO-TECHNOLOGIES, LLC.

RECEIVING & APPROVAL FORM

RECEIVING INFORMATION	
Date	01/24/14
Receiving ID#	101241401
Manifest# Line:	
Land Ban Cert included	Yes No
EGT Approval #	A
Generator	EGT
Client	
Transporter	
Time in	
Time out	
Received by	J.H.
Sampled by	[Signature]

COPY

LAB INFORMATION:		Oilfield Brines Only:	
All Waste Shipments:		Barium	
Compatible? (RT#)	Yes No	Calcium	
PCBs (ppm)(Oily Waste Only)?		Total Iron	
TOC (ppm)(CC Waste Only)?		Magnesium	
Flash Point (°F)	> 140	Sodium Chloride	
pH (S.U.)	10.6	Bicarbonate	
Cyanides? (mg/L)		Carbonate	
Sulfides? (ppm)		TDS	< 0.17
Specific Gravity	1.00	Resistivity	
Physical Description		Sulfate	
Stream Consistency	Yes No		
Oil in Sample	Yes No		
Temperature	57°F		
Conductivity	1.3 mS		
% Solids	< 0.1		
Turbidity	Yes No		
Color (visual)			
TSS (%)	< 0.1		
Radiation Screen (as needed)			
Lab Signature	[Signature]		

FINGERPRINT FORM

ENVIRONMENTAL GEO-TECHNOLOGIES, LLC.

RECEIVING & APPROVAL FORM

RECEIVING INFORMATION

Date	01/24/14
Receiving ID#	101241402
Manifest# Line:	
Land Ban Cert included	Yes No
EGT Approval #	
Generator	
Client	
Transporter	
Time in	
Time out	
Received by	J.H.
Sampled by	B.H.

COPY

LAB INFORMATION:		Oilfield Brines Only:	
All Waste Shipments:			
Compatible? (RT#)	Yes No	Barium	
PCBs (ppm)(Oily Waste Only)?		Calcium	
TOC (ppm)(CC Waste Only)?		Total Iron	
Flash Point (°F)	140	Magnesium	
pH (S.U.)	13.3	Sodium Chloride	
Cyanides? (mg/L)		Bicarbonate	
Sulfides? (ppm)		Carbonate	
Specific Gravity	1.01	TDS	1.27
Physical Description		Resistivity	
Stream Consistency	Yes No	Sulfate	
Oil in Sample	Yes No		
Temperature	56°F		
Conductivity	23.7 mS		
% Solids	<0.1		
Turbidity	Yes No		
Color (visual)			
TSS (%)	<0.1		
Radiation Screen (as needed)			
Lab Signature			

FINGERPRINT FORM

ENVIRONMENTAL GEO-TECHNOLOGIES, LLC.

RECEIVING & APPROVAL FORM

RECEIVING INFORMATION

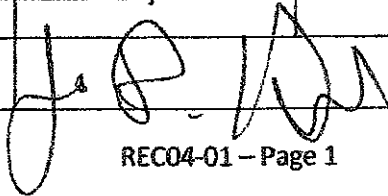
Date	01/27/14
Receiving ID#	101271401
Manifest# Line:	
Land Ban Cert included	Yes No
EGT Approval #	A
Generator	EGT
Client	
Transporter	
Time in	
Time out	
Received by	
Sampled by	WAA

COPY

LAB INFORMATION:

All Waste Shipments:

Oilfield Brines Only:

Compatible? (RT#)	Yes No	Barium	
PCBs (ppm)(Oily Waste Only)?		Calcium	
TOC (ppm)(CC Waste Only)?		Total Iron	
Flash Point (°F)	> 140	Magnesium	
pH (S.U.)	12.3	Sodium Chloride	
Cyanides? (mg/L)		Bicarbonate	
Sulfides? (ppm)		Carbonate	
Specific Gravity	1.00	TDS	0.29
Physical Description		Resistivity	
Stream Consistency	Yes No	Sulfate	
Oil in Sample	Yes No		
Temperature	52°F		
Conductivity	4.1 mS		
% Solids	< 0.1		
Turbidity	Yes No		
Color (visual)			
TSS (%)	< 0.1		
Radiation Screen (as needed)			
Lab Signature			

FINGERPRINT FORM

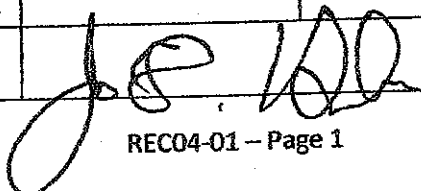
ENVIRONMENTAL GEO-TECHNOLOGIES, LLC.

RECEIVING & APPROVAL FORM

RECEIVING INFORMATION

Date	01/27/14
Receiving ID#	I 011271402
Manifest# Line:	
Land Ban Cert included	Yes No
EGT Approval #	A
Generator	EGT
Client	
Transporter	
Time in	
Time out	
Received by	SH
Sampled by	DA

COPY

LAB INFORMATION:		Oilfield Brines Only:	
All Waste Shipments:			
Compatible? (RT#)	Yes No	Barium	
PCBs (ppm)(Oily Waste Only)?		Calcium	
TOC (ppm)(CC Waste Only)?		Total Iron	
Flash Point (°F)	> 140	Magnesium	
pH (S.U.)	0.5	Sodium Chloride	
Cyanides? (mg/L)		Bicarbonate	
Sulfides? (ppm)		Carbonate	
Specific Gravity	1.07	TDS	6.2%
Physical Description		Resistivity	
Stream Consistency	Yes No	Sulfate	
Oil in Sample	Yes No		
Temperature	55°F		
Conductivity	122.9 mS		
% Solids	< 0.1		
Turbidity	Yes No		
Color (visual)			
TSS (%)	< 0.1		
Radiation Screen (as needed)			
Lab Signature			

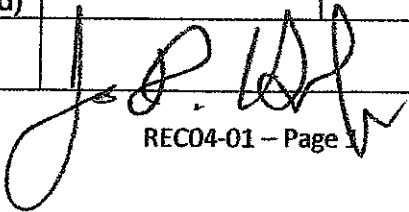
FINGERPRINT FORM

ENVIRONMENTAL GEO-TECHNOLOGIES, LLC.

RECEIVING & APPROVAL FORM

RECEIVING INFORMATION	
Date	01/28/14
Receiving ID#	101281401
Manifest# Line:	
Land Ban Cert included	Yes No
EGT Approval #	A
Generator	EGT
Client	
Transporter	
Time in	
Time out	
Received by	J.H.
Sampled by	D.H.

COPY

LAB INFORMATION:		Oilfield Brines Only:	
All Waste Shipments:			
Compatible? (RT#)	(Yes) No	Barium	
PCBs (ppm)(Oily Waste Only)?		Calcium	
TOC (ppm)(CC Waste Only)?		Total Iron	
Flash Point (°F)	> 140	Magnesium	
pH (S.U.)	4.3	Sodium Chloride	
Cyanides? (mg/L)		Bicarbonate	
Sulfides? (ppm)		Carbonate	
Specific Gravity	1.03	TDS	2.37
Physical Description		Resistivity	
Stream Consistency	Yes No	Sulfate	
Oil in Sample	Yes No		
Temperature	52°F		
Conductivity	45.6 mS		
% Solids	< 0.1		
Turbidity	Yes No		
Color (visual)			
TSS (%)	< 0.1		
Radiation Screen (as needed)			
Lab Signature			

**WASTE STREAMS
CHARACTERIZATIONS**