

AVERAGE INJECTION RATE

Calculation of Average Injection Rate

CURRENT REPORTING YEAR 2014

CURRENT REPORTING MONTH FEBRUARY

Date (month, year) of the first injection into either well at the Citrin Road Facility

NOVEMBER 2013

CURRENT MONTH (all volumes in gallons)

	Injected Waste	Injected Non-Waste	Total injected
MI-163-1W-C010, Well #1-12			
Current Month	73,222 gal	0	73,222 gal
Since facility first injected			167,790 gal
MI-163-1W-C011, Well #2-12			
Current Month	95,122 gal	0	95,122 gal
Since facility first injected			402,613 gal
		Lifetime Combined	570,403 gal

Conversion factors

365.25 days per year ÷ 12 months per year = 30.4375 days per month

30.4375 days per month × 1440 minutes per day = 43,830 minutes per month

Calculations

Whole number of months of injection 4

4 lifetime number of months of injection × 43,830 minutes/month
= 175,320 minutes of injection

Lifetime combined injected volume 570,403 ÷ 175,320 minutes of injection
= 3.3 gpm average injection rate

WELL 1 DATA

**SUMMARY OF OPERATING, MONITORING AND REPORTING REQUIREMENTS
Injection Well I**

Month: February

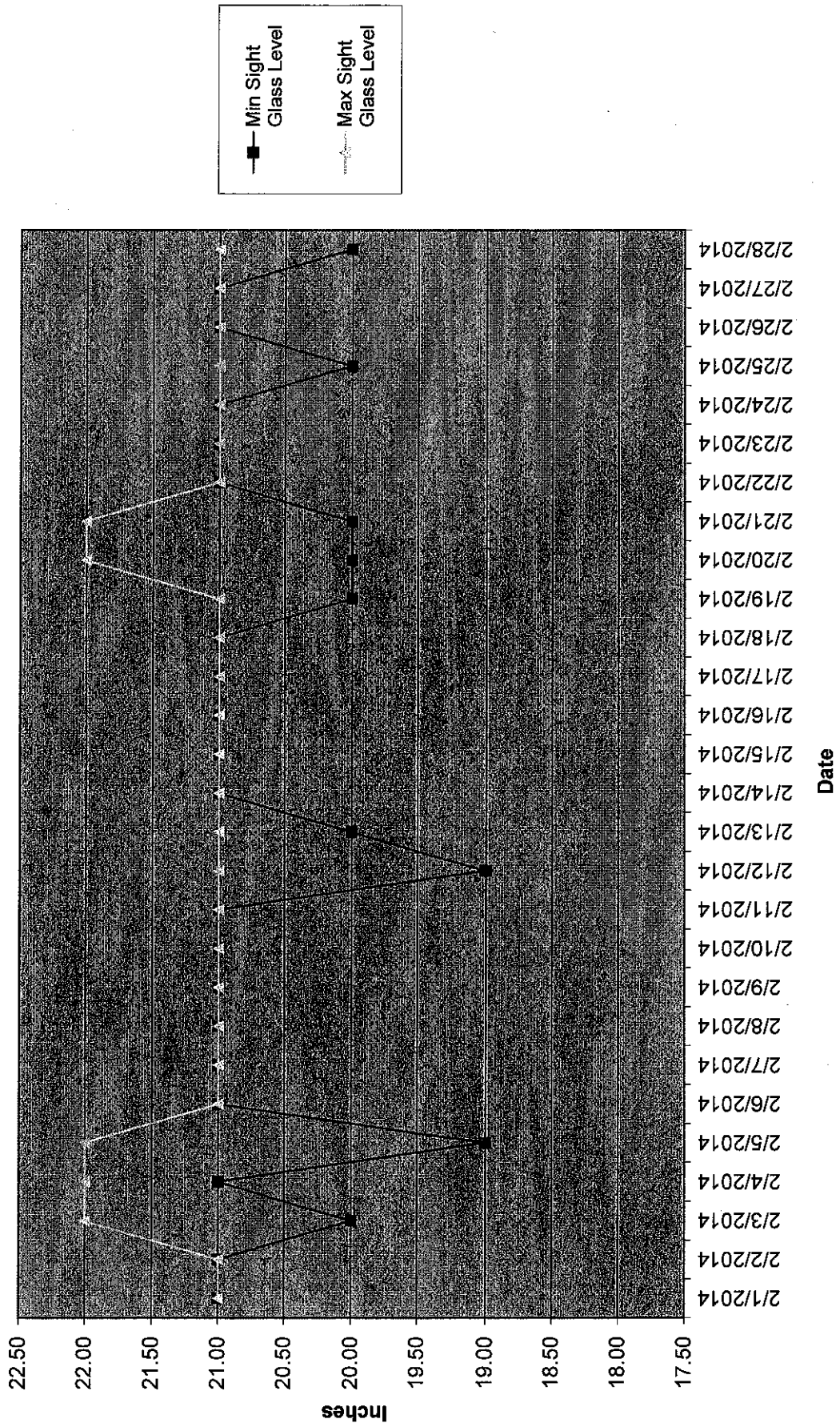
Year: 2014

CHARACTERISTIC	LIMITATION	MINIMUM MONITORING FREQUENCY	MINIMUM REPORTING FREQUENCY	STATUS
Injection Pressure	765 psig maximum	continuous	monthly	736 psig
Annulus Injection Pressure	100 psig minimum	continuous	monthly	261 psig
Annulus/Tubing Diff	100 psig minimum above injection pressure	continuous	monthly	183 psig
Injection Rate (Average both wells)	166 gpm	continuous	monthly	3.3 gpm
Injection Rate (Maximum instantaneous)	270 gpm	continuous	monthly	151 gpm
Sight Glass Level		continuous	monthly	Graph attached
Annulus Fluid Loss		monthly	monthly	0.0 gal
Cumulative Volume		daily	monthly	73,222 gal
Temperature		6-hour intervals	monthly	Graph attached
Corrosion Monitoring		monthly	monthly	Report attached
Repair and Maintenance		NA	monthly	Log attached
Toxicity Characteristic List		annually	monthly	NA
Fingerprint Analysis		per load	monthly	Sheets attached
Chemical Composition and Physical Characteristics of Injected Oilfield Brine		annually	annually	NA
pH of Injected Fluids		continuous	monthly	Graph attached

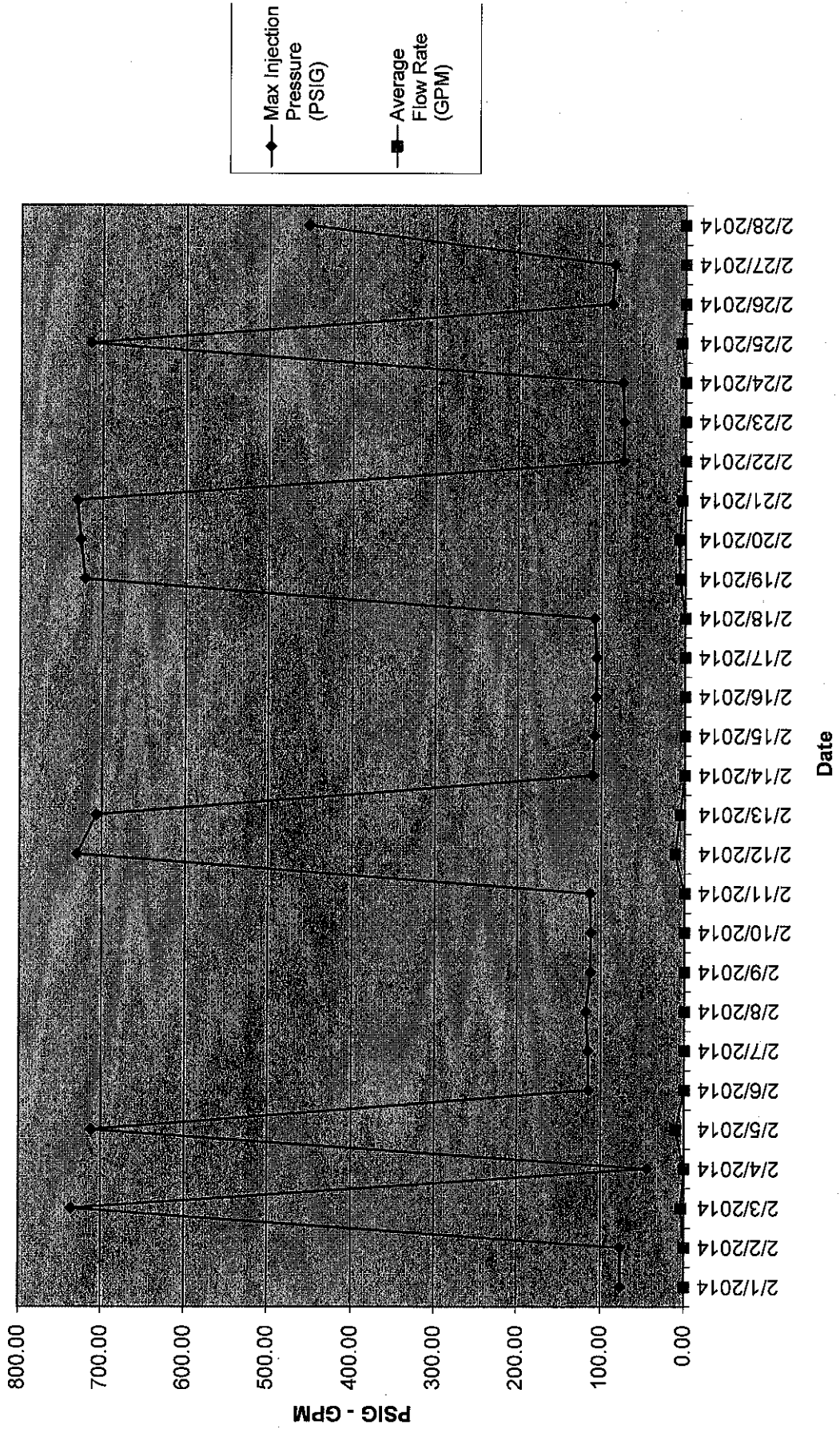
Well 01 Monthly Data

Date	Min Injection Pressure (PSIG)	Max Injection Pressure (PSIG)	Min Sight Glass Level (in)	Max Sight Glass Level (in)	Min Annulus Pressure (PSIG)	Max Annulus Pressure (PSIG)	Min Injectate pH	Max Injectate pH	Min Flow Rate (GPM)	Max Flow Rate (GPM)	Avg Flow Rate (GPM)	Min Differential Pressure (PSIG)	Max Differential Pressure (PSIG)
2/1/2014	76.16	76.50	21.00	21.00	382.23	384.71	5.40	5.71	0.00	0.00	0.00	305.96	308.46
2/2/2014	75.60	76.29	21.00	21.00	378.78	382.30	5.39	5.57	0.00	0.00	0.00	303.11	306.09
2/3/2014	43.50	735.99	20.00	22.00	291.98	978.05	5.46	13.81	0.00	144.30	3.42	207.39	388.17
2/4/2014	40.43	43.99	21.00	22.00	280.93	292.00	13.55	13.81	0.00	0.00	0.00	239.26	248.49
2/5/2014	40.38	711.73	19.00	22.00	279.63	1014.76	4.49	13.80	0.00	117.10	10.06	189.68	349.79
2/6/2014	112.97	114.58	21.00	21.00	390.66	393.28	4.79	5.12	0.00	0.00	0.00	277.63	278.92
2/7/2014	112.42	115.18	21.00	21.00	388.80	390.75	2.36	4.86	0.00	0.00	0.00	275.04	277.75
2/8/2014	95.21	118.12	21.00	21.00	387.05	388.83	4.48	4.90	0.00	0.00	0.00	269.48	292.62
2/9/2014	100.46	112.54	21.00	21.00	385.63	387.14	4.47	4.86	0.00	0.00	0.00	273.90	286.05
2/10/2014	110.47	112.16	21.00	21.00	383.82	385.75	4.84	9.96	0.00	0.00	0.00	272.71	274.06
2/11/2014	109.68	113.44	21.00	21.00	381.99	383.98	0.75	12.35	0.00	0.00	0.00	270.45	272.98
2/12/2014	54.09	730.10	19.00	21.00	317.52	1024.06	0.73	13.33	0.00	150.84	11.36	192.01	357.18
2/13/2014	52.97	706.54	20.00	21.00	337.09	1008.24	11.54	13.37	0.00	132.02	4.93	197.45	346.35
2/14/2014	108.06	110.27	21.00	21.00	424.07	429.54	3.21	11.80	0.00	0.00	0.00	314.63	320.65
2/15/2014	106.23	108.15	21.00	21.00	426.19	428.69	3.92	4.32	0.00	0.00	0.00	319.70	320.68
2/16/2014	105.30	106.75	21.00	21.00	424.08	428.26	4.27	4.32	0.00	0.00	0.00	318.57	320.00
2/17/2014	104.93	106.17	21.00	21.00	422.55	424.15	2.71	6.13	0.00	0.00	0.00	316.65	318.86
2/18/2014	103.03	108.58	21.00	21.00	420.62	425.70	0.91	4.18	0.00	0.00	0.00	314.98	318.44
2/19/2014	78.72	721.09	20.00	21.00	395.82	1000.89	1.51	12.23	0.00	70.57	6.09	197.77	343.28
2/20/2014	0.02	726.77	20.00	22.00	271.22	1056.67	11.95	13.97	0.00	60.26	6.88	187.93	345.12
2/21/2014	0.02	730.96	20.00	22.00	261.30	973.82	12.30	13.97	0.00	110.87	3.48	185.88	353.36
2/22/2014	73.62	74.70	21.00	21.00	366.62	368.42	12.62	12.66	0.00	0.00	0.00	292.96	293.92
2/23/2014	72.80	73.97	21.00	21.00	363.83	366.73	12.60	12.63	0.00	0.00	0.00	290.96	293.09
2/24/2014	70.29	75.82	21.00	21.00	360.97	363.98	1.58	12.60	0.00	0.00	0.00	288.08	291.05
2/25/2014	72.87	714.61	20.00	21.00	333.23	1042.61	1.46	6.13	0.00	52.10	4.33	182.79	345.88
2/26/2014	82.22	87.91	21.00	21.00	315.14	333.19	5.07	13.68	0.00	0.00	0.00	229.93	247.28
2/27/2014	82.99	85.23	21.00	21.00	309.65	315.20	13.22	13.65	0.00	0.00	0.00	226.61	230.04
2/28/2014	72.70	452.86	20.00	21.00	307.90	726.71	5.71	13.60	0.00	22.05	0.31	198.02	344.81

Well 1 Min/Max Sight Glass Level Chart



Well 1 Max Injection Pressure and Avg. Flow Rate



Circle Chart Index

Environmental Geo-Technologies, LLC 28470 Citrin Drive Romulus, MI 48174

Chart Recorder #1

Channel #1

Blue Pen - Well 1 Injection Pressure

Channel #2

Red Pen – Well 1 Annulus Pressure

Channel #3

Green Pen – Well 1 Flow Rate

Channel #4

Black Pen – Well 1 Annulus Tank Level

Chart Recorder #2

Channel #1

Blue Pen – Well 2 Injection Pressure

Channel #2

Red Pen – Well 2 Annulus Pressure

Channel #3

Green Pen – Well 2 Flow Rate

Channel #4

Black Pen – Well 2 Annulus Tank Level

Chart Recorder #3

Channel #1

Blue Pen – Injection pH Well 1 & 2

Channel #2

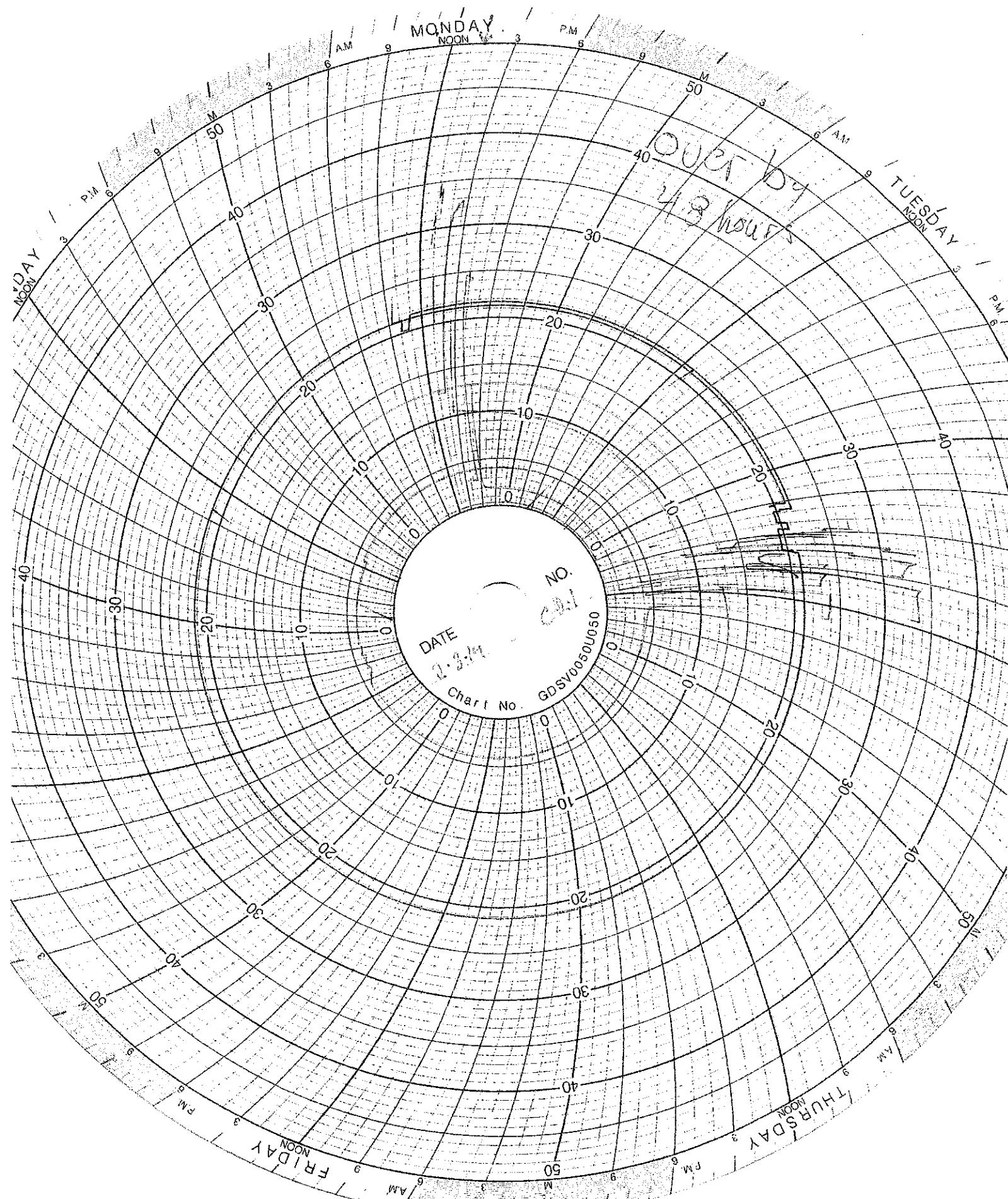
Red Pen – Well 1 Monthly Volume

Channel #3

Green Pen – Well 2 Monthly Volume

Channel #4

Black Pen - Temperature



MONDAY

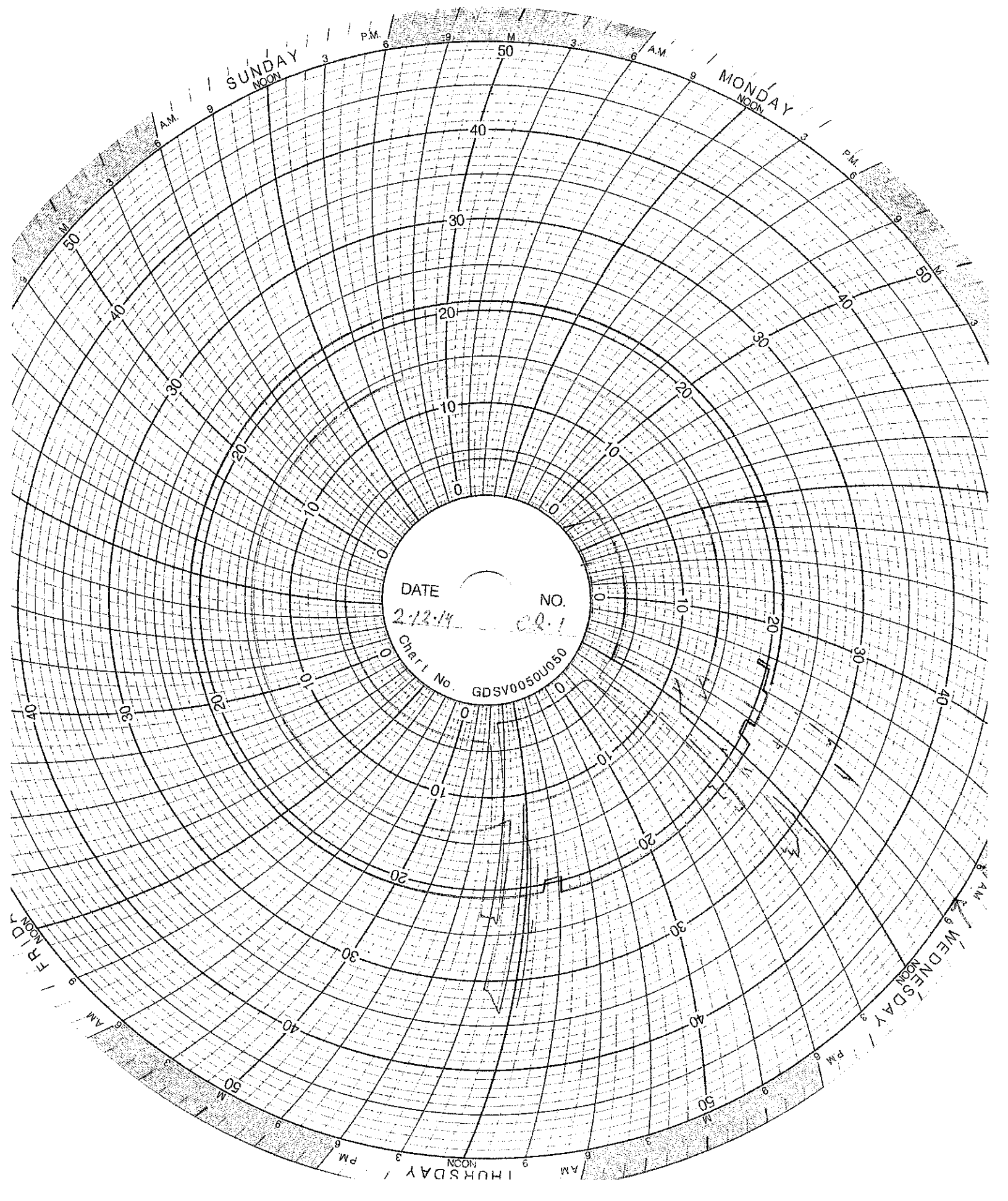
TUESDAY

THURSDAY

FRIDAY

OUT by
48 hours

DATE 2-2-44
Chart No. GDSV10050U050
NO. 221



SUNDAY
NOON

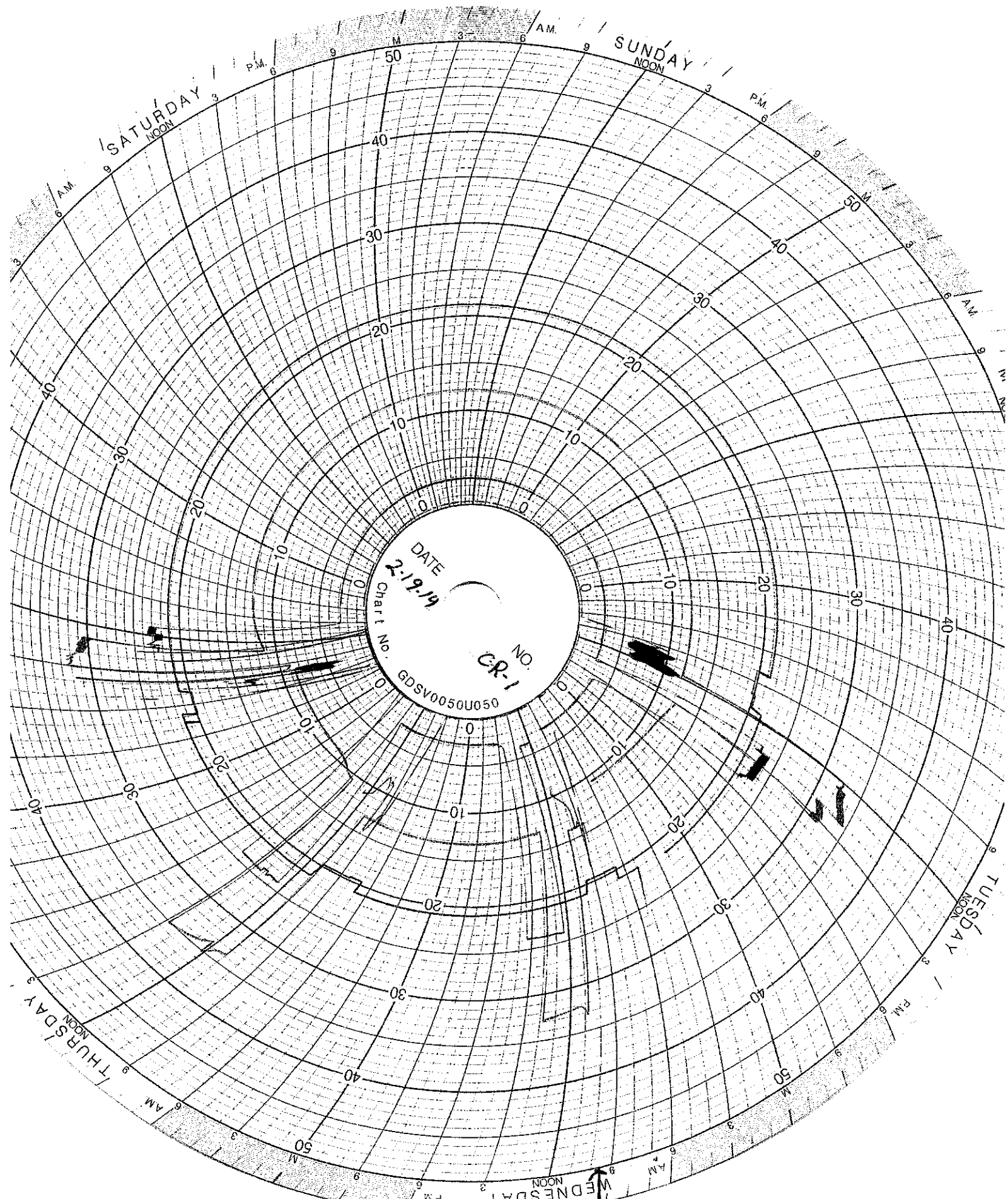
MONDAY
NOON

WEDNESDAY
NOON

DATE 2-13-14 NO. CR-1
Chart No. GDSV0050U050

FRIDAY
NOON

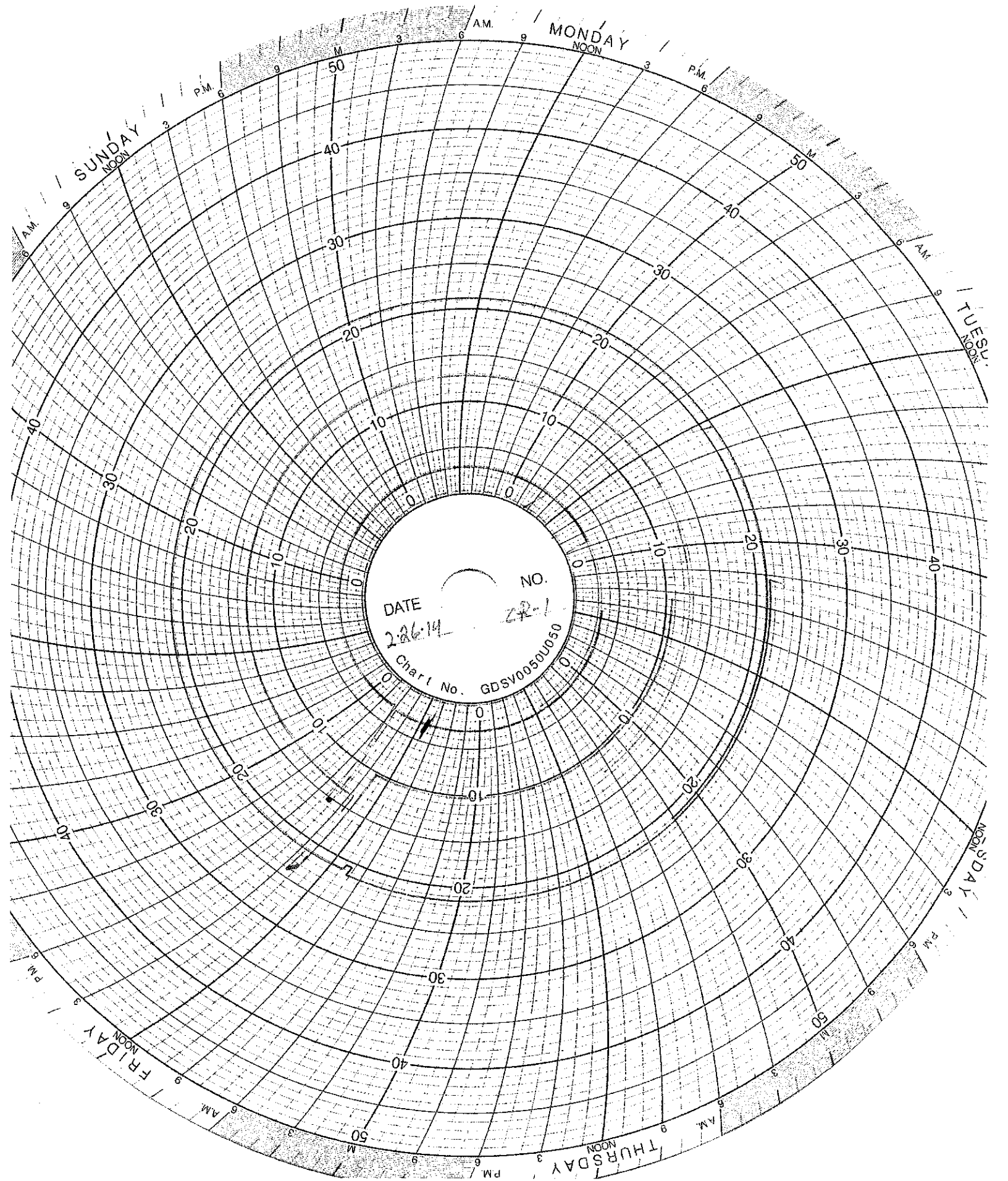
THURSDAY
NOON



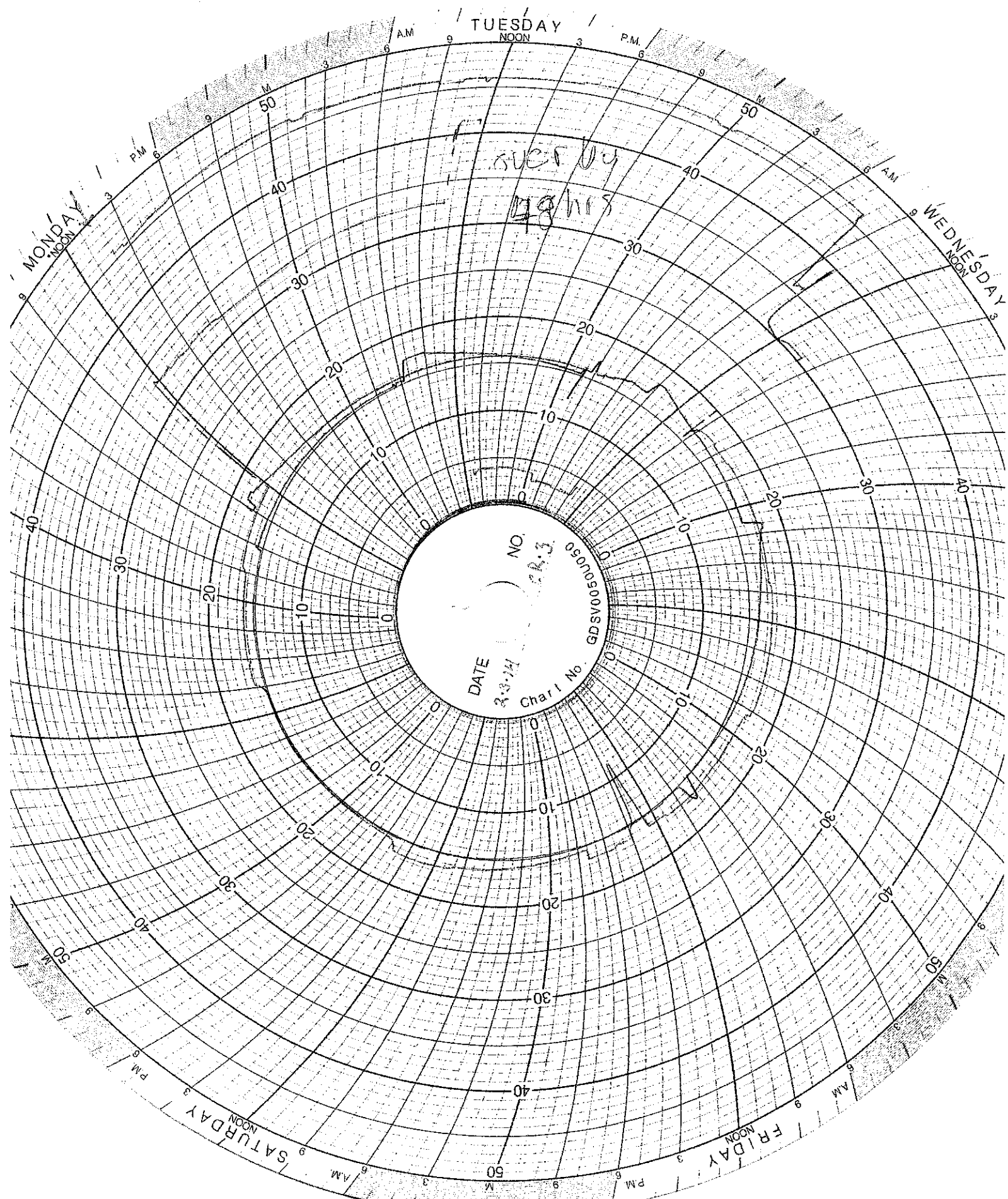
DATE
2-19-19

Chart No.
GDSV0050U050

NO.
CR-1

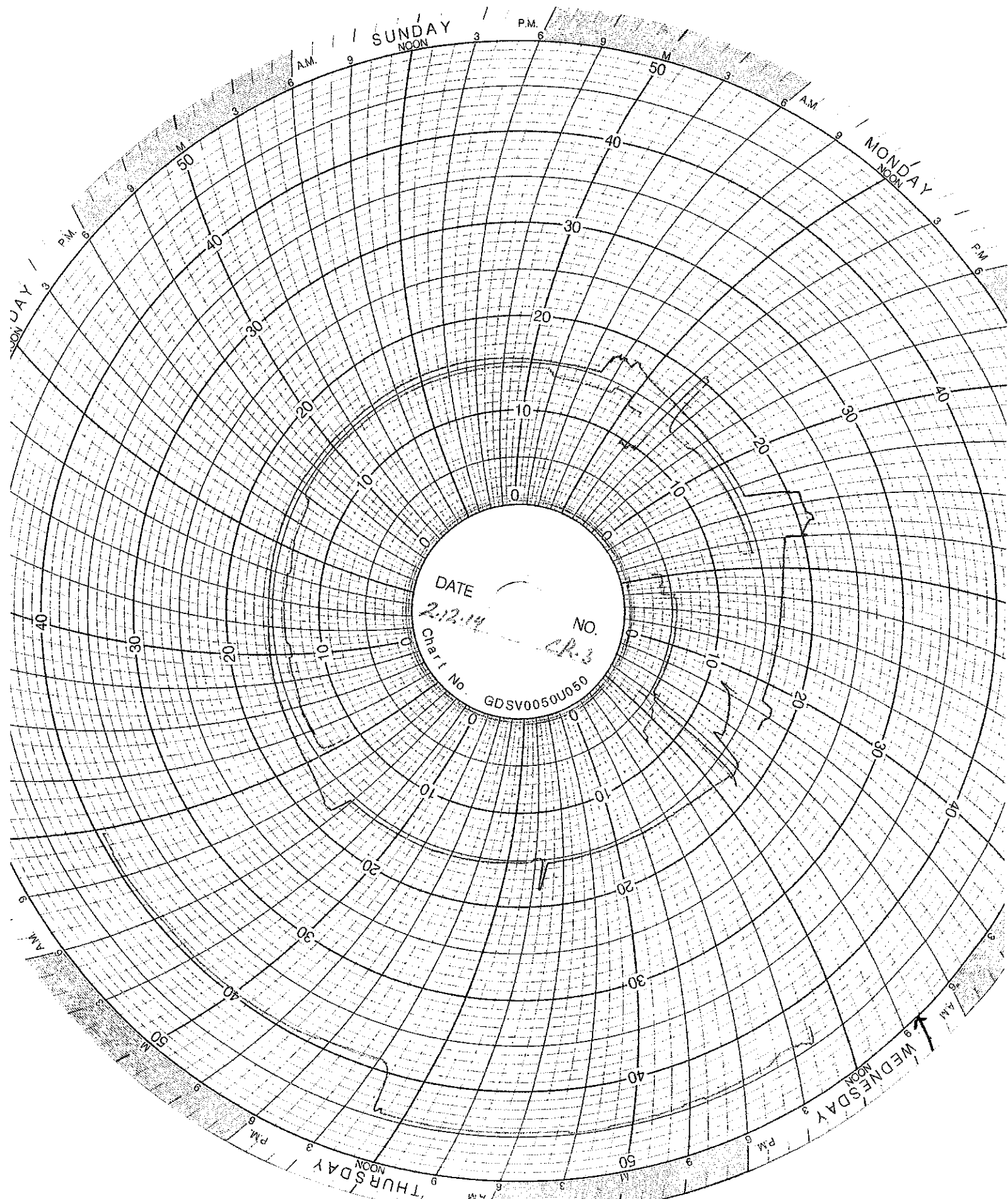


DATE 2-26-14 NO. 22-1
Chart No. GDSV0050U050



DATE 2-2-74
Chart No GDS0501050
NO. 28.3

over the
night



SUNDAY

MONDAY

WEDNESDAY

THURSDAY

DATE

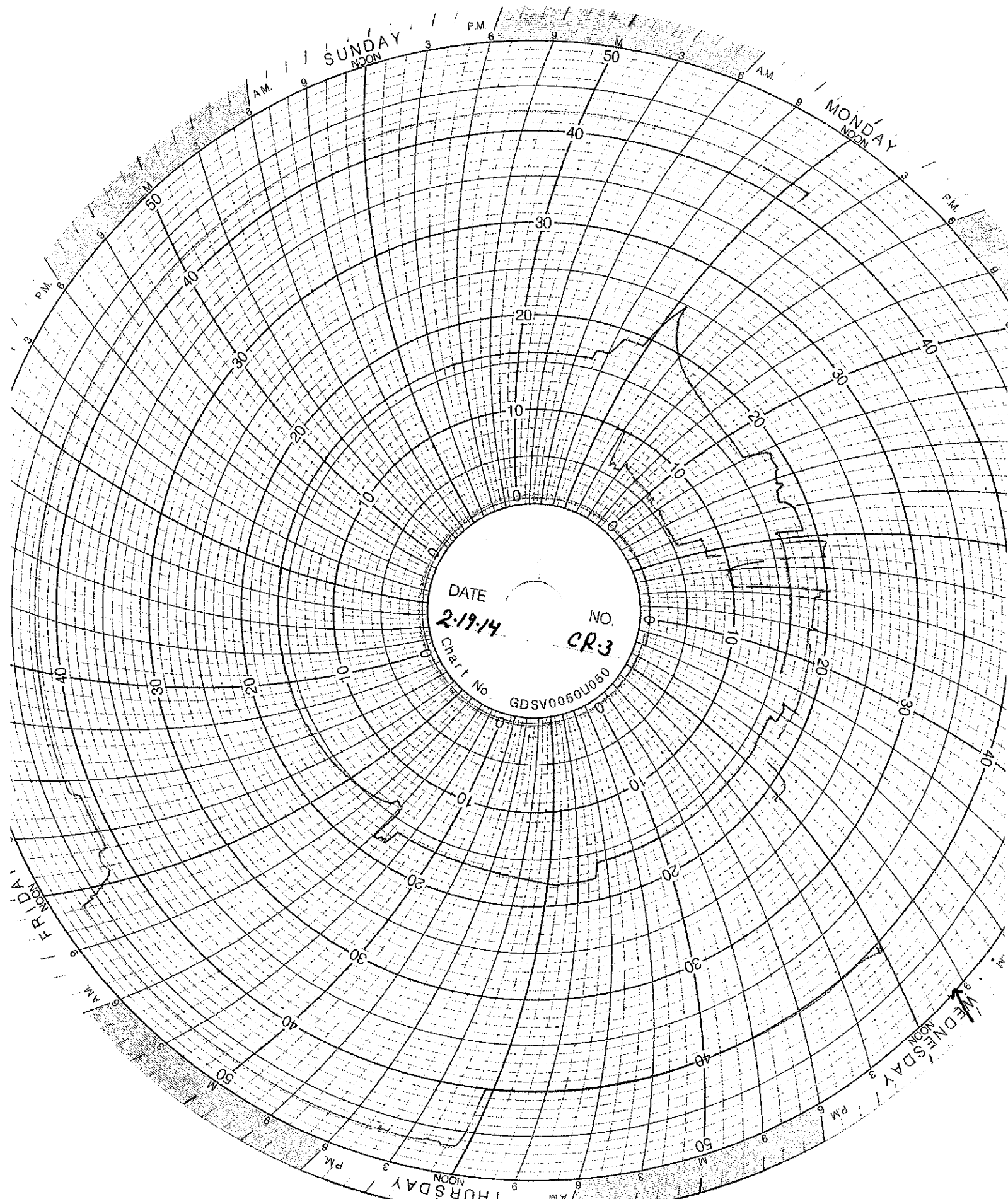
2-12-14

NO.

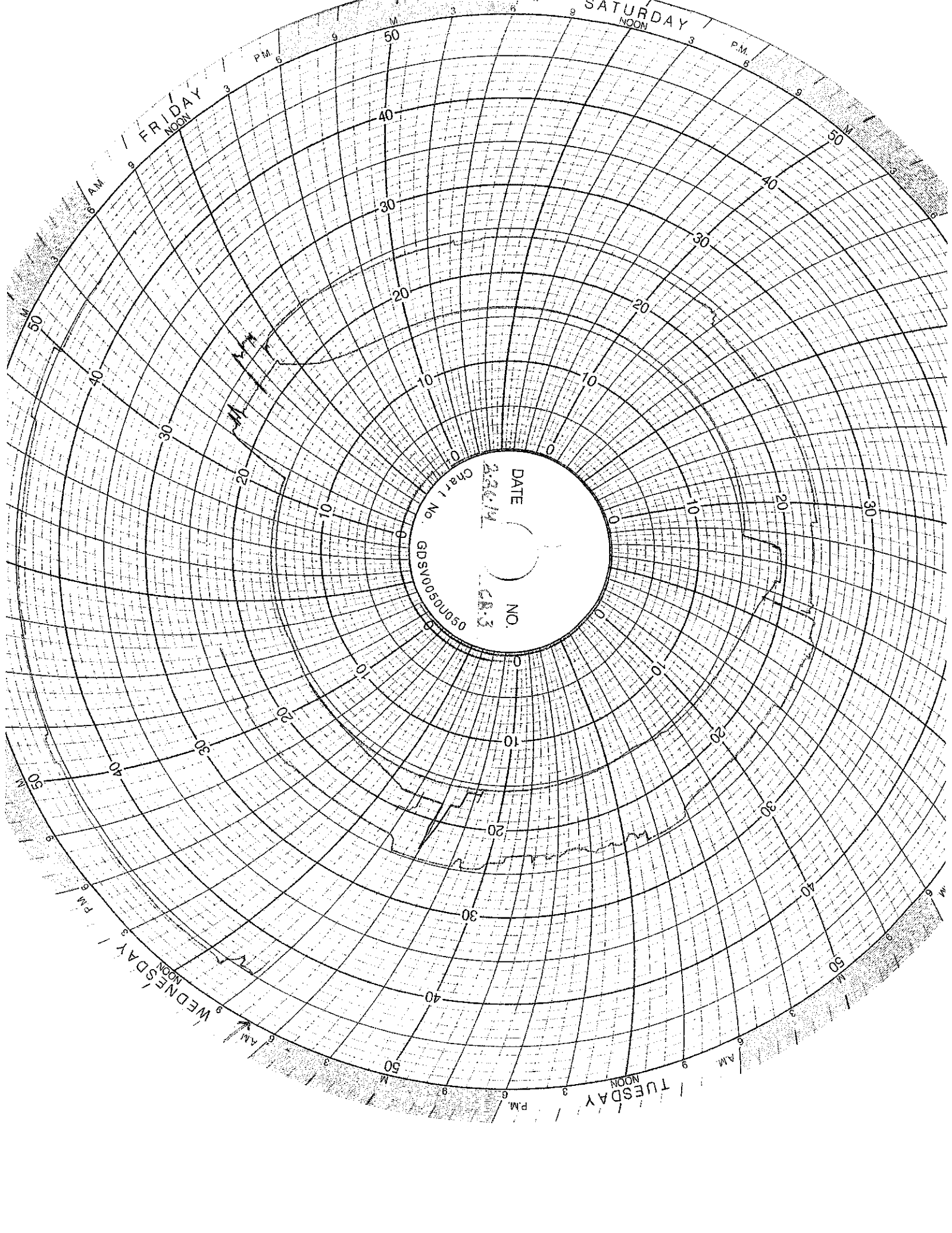
CR-3

Chart No.

GDSV0050U060



DATE 2-19-14 NO. CR-3
Chart No. GDSV0050U050



FRIDAY
NOON

SATURDAY
NOON

WEDNESDAY
NOON

TUESDAY
NOON

DATE 2/26/74
NO. 283
Chart No. GDSV0050U050

WELL 2 DATA

**SUMMARY OF OPERATING, MONITORING AND REPORTING REQUIREMENTS
Injection Well II**

Month: February

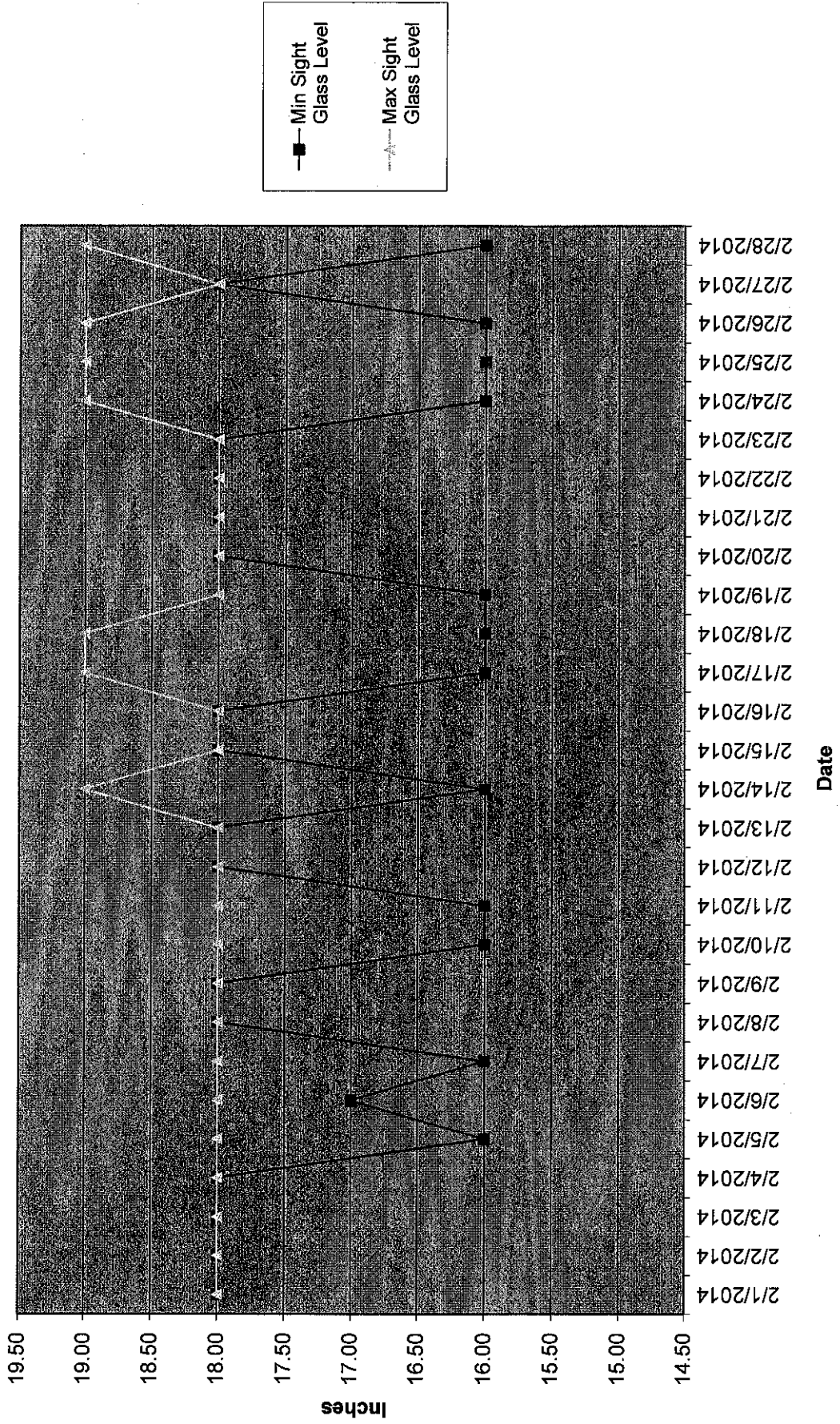
Year: 2014

CHARACTERISTIC	LIMITATION	MINIMUM MONITORING FREQUENCY	MINIMUM REPORTING FREQUENCY	STATUS
Injection Pressure	765 psig maximum	continuous	monthly	734 psig
Annulus Injection Pressure	100 psig minimum	continuous	monthly	202 psig
Annulus/Tubing Diff	100 psig minimum above injection pressure	continuous	monthly	163 psig
Injection Rate (Average both wells)	166 gpm	continuous	monthly	3.3 gpm
Injection Rate (Maximum instantaneous)	270 gpm	continuous	monthly	194 gpm
Sight Glass Level		continuous	monthly	Graph attached
Annulus Fluid Loss		monthly	monthly	0.0 gal
Cumulative Volume		daily	monthly	95,122 gal
Temperature		6-hour intervals	monthly	Graph attached
Corrosion Monitoring		monthly	monthly	Report attached
Repair and Maintenance		NA	monthly	Log attached
Toxicity Characteristic List		annually	monthly	NA
Fingerprint Analysis		per load	monthly	Sheets attached
Chemical Composition and Physical Characteristics of Injected Oilfield Brine		annually	annually	NA
pH of Injected Fluids		continuous	monthly	Graph attached

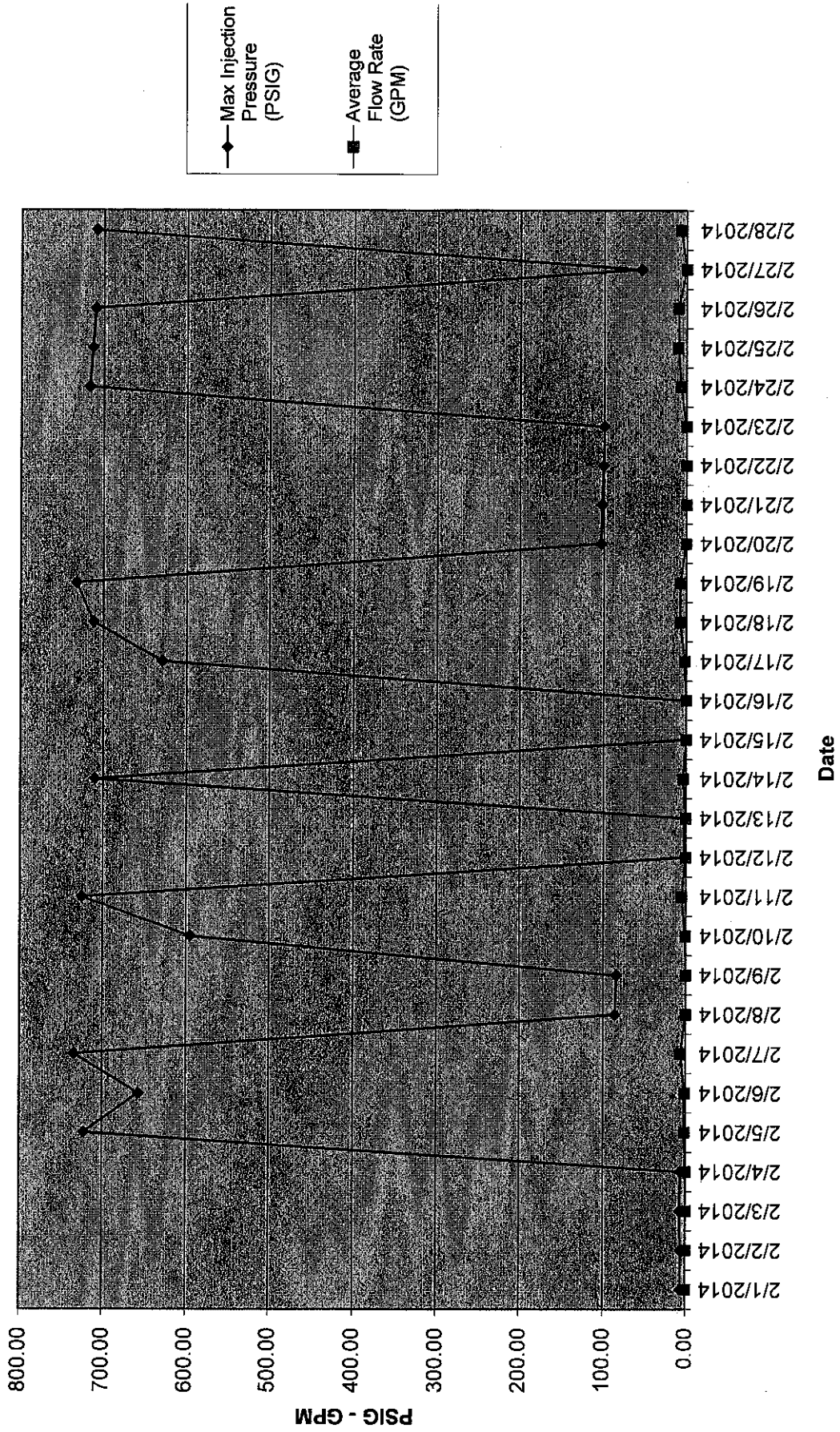
Well 02 Monthly Data

Date	Min Injection Pressure (PSIG)	Max Injection Pressure (PSIG)	Min Sight Glass Level (in)	Max Sight Glass Level (in)	Min Annulus Pressure (PSIG)	Max Annulus Pressure (PSIG)	Min Injectate pH	Max Injectate pH	Min Flow Rate (GPM)	Max Flow Rate (GPM)	Avg Flow Rate (GPM)	Min Differential Pressure (PSIG)	Max Differential Pressure (PSIG)
2/1/2014	5.87	6.19	18.00	18.00	275.17	275.46	5.40	5.71	0.00	0.00	0.00	269.07	269.49
2/2/2014	5.55	5.94	18.00	18.00	274.37	275.36	5.39	5.57	0.00	0.00	0.00	268.74	269.48
2/3/2014	5.39	6.97	18.00	18.00	273.61	274.82	5.46	13.81	0.00	0.00	0.00	267.72	268.91
2/4/2014	5.73	6.13	18.00	18.00	272.97	273.86	13.55	13.81	0.00	0.00	0.00	267.13	267.87
2/5/2014	0.02	722.10	18.00	18.00	273.09	980.69	4.49	13.80	0.00	57.37	1.54	199.60	336.88
2/6/2014	0.02	656.64	17.00	18.00	213.43	866.91	4.79	5.12	0.00	106.71	1.10	199.78	349.82
2/7/2014	0.18	734.27	18.00	18.00	213.57	996.03	2.36	4.86	0.00	100.57	6.22	184.51	349.95
2/8/2014	83.26	85.39	18.00	18.00	294.87	298.52	4.48	4.90	0.00	0.00	0.00	211.46	213.26
2/9/2014	82.76	83.44	18.00	18.00	293.79	295.00	4.47	4.88	0.00	0.00	0.00	210.90	211.65
2/10/2014	76.44	594.67	18.00	18.00	290.39	870.14	4.84	9.96	0.00	41.73	0.33	200.98	349.79
2/11/2014	0.00	725.21	18.00	18.00	295.54	1066.14	0.75	12.35	0.00	61.57	4.93	201.63	349.41
2/12/2014	0.00	1.85	18.00	18.00	295.65	305.99	0.73	13.33	0.00	0.00	0.00	295.64	305.98
2/13/2014	0.00	1.39	18.00	18.00	293.98	295.72	11.54	13.37	0.00	0.00	0.00	293.97	295.72
2/14/2014	0.01	709.62	18.00	19.00	221.87	1034.93	3.21	11.80	0.00	85.02	3.53	199.13	355.37
2/15/2014	0.07	0.07	18.00	18.00	218.30	221.95	3.92	4.32	0.00	0.00	0.00	218.23	221.88
2/16/2014	0.07	0.07	18.00	18.00	217.39	218.60	4.27	4.32	0.00	0.00	0.00	217.31	218.52
2/17/2014	0.07	629.56	18.00	19.00	202.14	936.78	2.71	6.13	0.00	194.00	1.55	197.81	350.03
2/18/2014	1.88	711.32	18.00	19.00	230.46	1056.33	0.91	4.18	0.00	111.96	7.49	186.52	350.01
2/19/2014	40.88	732.44	18.00	18.00	287.42	1044.01	1.51	12.23	0.00	68.14	7.37	199.45	350.14
2/20/2014	100.58	103.26	18.00	18.00	387.19	401.26	11.95	13.97	0.00	0.00	0.00	285.36	298.77
2/21/2014	100.32	102.20	18.00	18.00	382.29	387.24	12.30	13.97	0.00	0.00	0.00	281.89	285.51
2/22/2014	99.23	100.42	18.00	18.00	379.97	382.36	12.62	12.66	0.00	0.00	0.00	280.66	282.03
2/23/2014	98.52	99.34	18.00	18.00	377.39	380.03	12.60	12.63	0.00	0.00	0.00	278.82	280.78
2/24/2014	48.05	716.72	18.00	19.00	287.20	1052.31	1.58	12.60	0.00	89.95	6.49	184.58	349.03
2/25/2014	52.00	712.90	18.00	19.00	281.50	1007.43	1.46	6.13	0.00	76.31	10.18	195.65	379.28
2/26/2014	54.19	709.38	18.00	19.00	259.66	999.49	5.07	13.68	0.00	66.28	9.84	192.69	364.49
2/27/2014	49.85	54.25	18.00	18.00	306.81	339.45	13.22	13.65	0.00	0.00	0.00	256.92	285.24
2/28/2014	5.12	708.20	18.00	19.00	221.91	1054.36	5.71	13.60	0.00	52.38	6.59	196.62	361.31

Well 2 Min/Max Sight Glass Level Chart



Well 2 Max Injection Pressure and Avg. Flow Rate



Circle Chart Index

Environmental Geo-Technologies, LLC 28470 Citrin Drive Romulus, MI 48174

Chart Recorder #1

Channel #1

Blue Pen - Well 1 Injection Pressure

Channel #2

Red Pen - Well 1 Annulus Pressure

Channel #3

Green Pen - Well 1 Flow Rate

Channel #4

Black Pen - Well 1 Annulus Tank Level

Chart Recorder #2

Channel #1

Blue Pen - Well 2 Injection Pressure

Channel #2

Red Pen - Well 2 Annulus Pressure

Channel #3

Green Pen - Well 2 Flow Rate

Channel #4

Black Pen - Well 2 Annulus Tank Level

Chart Recorder #3

Channel #1

Blue Pen - Injection pH Well 1 & 2

Channel #2

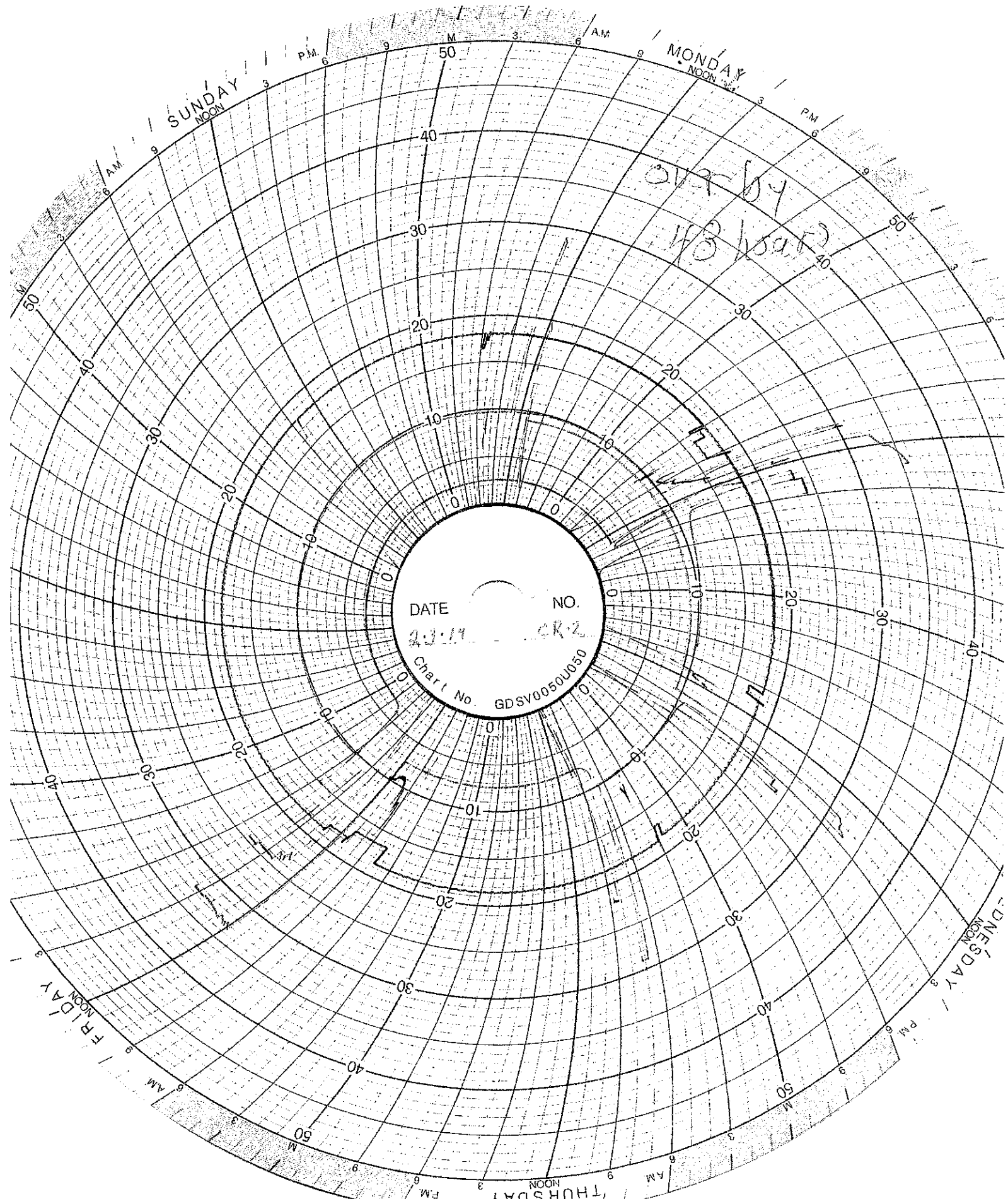
Red Pen - Well 1 Monthly Volume

Channel #3

Green Pen - Well 2 Monthly Volume

Channel #4

Black Pen - Temperature



SUNDAY
NOON

MONDAY
NOON

THURSDAY
NOON

FRIDAY
NOON

DATE NO.

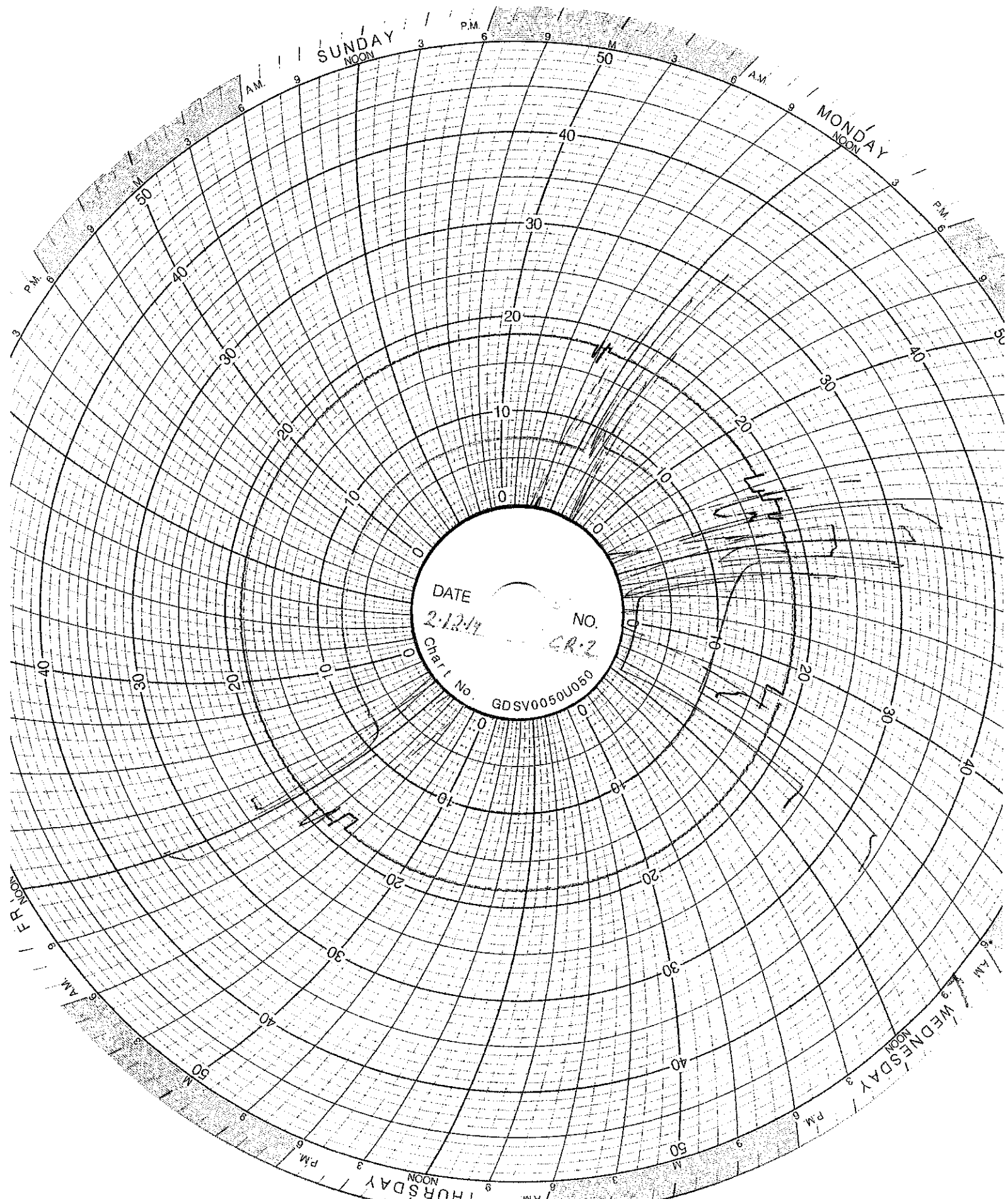
2.3.11 CR-2

Chart No. GDSV00501050

over by
1/3 sat

L

L



SUNDAY
NOON

MONDAY
NOON

WEDNESDAY
NOON

THURSDAY
NOON

DATE

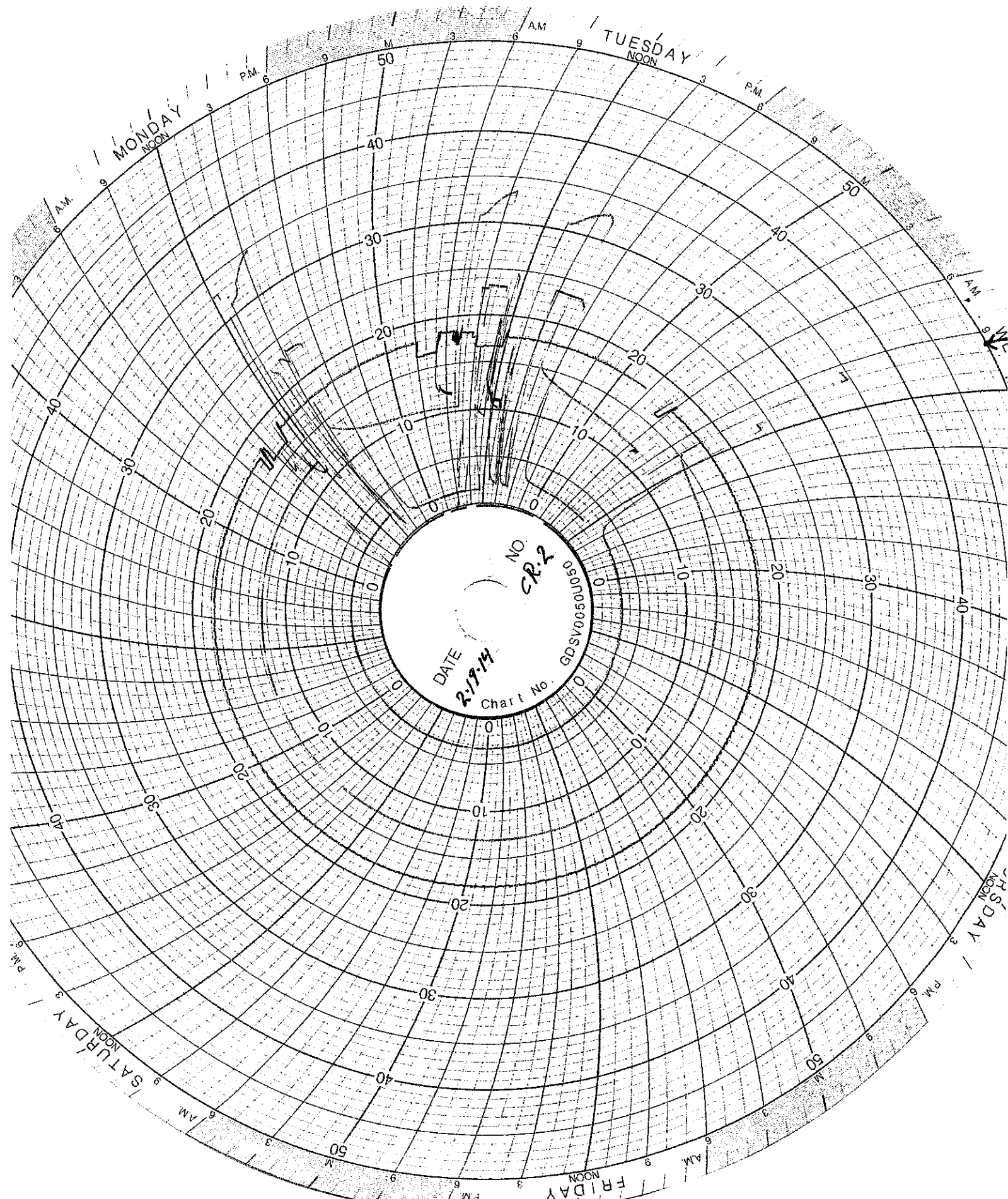
2-12-11

NO.

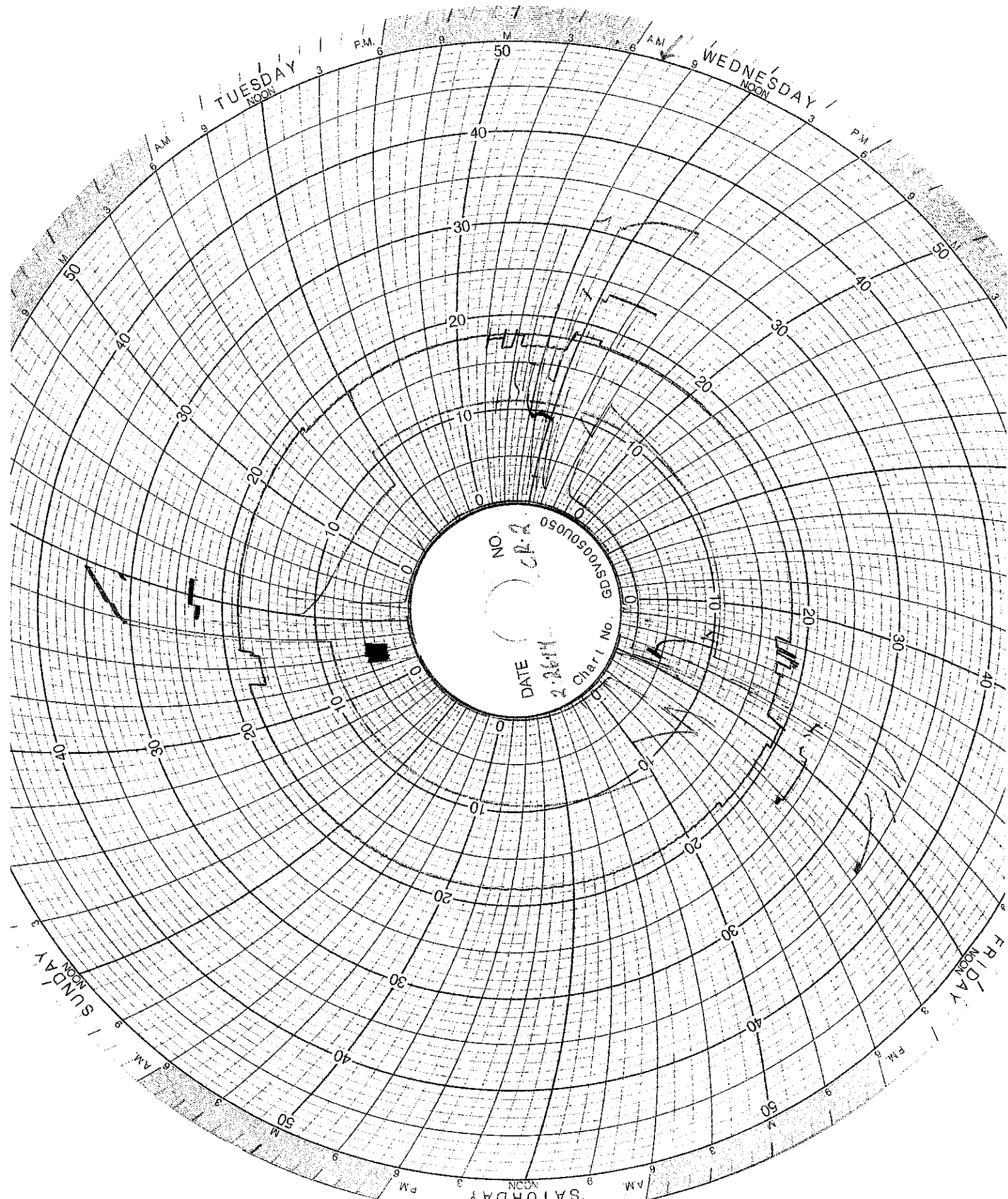
CR-2

Chart No.

GDSV0050U050



NO
CR-2
DATE
2-19-14
Chart No. GDSV005000050



TUESDAY
NOON

WEDNESDAY
NOON

FRIDAY
NOON

SUNDAY
NOON

THURSDAY
NOON

NO. 074
DATE 2.26.44
Char. No. 6390650050

MAINTENANCE LOG

UIC Monthly Maintenance Log

2/12/2014	Tightened pressure relief packing annulus well 2	Tightened the packing of the pressure relief valve on annulus system of well 2. This allows the system to maintain pressure for longer periods and eliminates excess pump cycling (on and off) to maintain operating pressure.
-----------	--	--

CORROSION MONITORING

Ghesquiere Plastic Testing, Inc.

20450 HARPER AVENUE
HARPER WOODS, MI 48225
PHONE (313) 885-3535
FAX (313) 885-1771

Report Date: February 17, 2014
Test Date: February 14 - 17, 2014

Report #1402-78036
Performed for:
Environmental Geo-Technologies
28470 Citrin Drive
Romulus, MI 48174

Attention: Mr. Don Anderson

WORK REQUESTED:

Perform Barcol Hardness test on sample submitted.

DESCRIPTION OF SAMPLE:

Sample submitted was identified as a fiberglass test coupon.
(P. O. #Credit Card).

WORK PERFORMED:

Test specimen was prepared as necessary and conditioned for a minimum of 24 hours at standard laboratory conditions prior to testing.

Barcol Hardness test was performed in accordance with the procedures of ASTM D2583-13. One specimen was tested.

RESULTS:

The following determination was made based upon the above test:

BARCOL HARDNESS

Hardness

Specimen 1 90

Specimen was returned to the client on February 17, 2014.

Ghesquiere Plastic Testing, Inc.


M. W. Ghesquiere
President

MWG/dm

GHESQUIERE PLASTIC TESTING, INC.

20450 HARPER AVENUE
HARPER WOODS, MI 48225
PHONE (313) 885-3535
FAX (313) 885-1771

Report Date: November 15, 2013
Test Date: October 15 - November 14, 2013

Report #1310-77651
Performed for:
Environmental Geo-Technologies
28470 Citrin Drive
Romulus, MI 48174

Attention: Mr. Don Anderson

WORK REQUESTED:

Perform Barcol Hardness test on sample submitted.

DESCRIPTION OF SAMPLE:

Sample submitted was identified as a fiberglass test coupon.

(P. O. #Credit Card).

WORK PERFORMED:

Test specimen was prepared as necessary and conditioned for a minimum of 24 hours at standard laboratory conditions prior to testing.

Barcol Hardness test was performed in accordance with the procedures of ASTM D2583-13. One specimen was tested.

RESULTS:

The following determination was made based upon the above test:

BARCOL HARDNESS

Hardness

Specimen 1	90
------------	----

Specimen is being returned with this report for further evaluation.

GHESQUIERE PLASTIC TESTING, INC.


M. W. Ghesquiere
President

MWG/kni

CORROSION MONITORING COUPONS BASELINE VISUAL DESCRIPTION

November 4, 2013

Fiberglass

The fiberglass coupon is Red Box 2000 type and is 2-1/2 inches long by 1/2 inch wide and 1/4 inches thick. It is a dark orange (rust) in color with a glossy shine on one side a polished look on the opposite side and the cut edges look sanded.

Hastelloy

The hastelloy coupon is identified as C276 with serial number 1. The dimensions of the coupon are 3 inches long by 1/2 inch wide and 1/4 inch thick. The coupon is silver in color with a lightly sandblasted surface.

Stainless Steel

The stainless steel coupon is identified as 316L with serial number C1562. The dimensions of the coupon are 3 inches long by 1/2 inch wide and 1/4 inch thick. The coupon is silver in color with a lightly sandblasted surface.

CORROSION MONITORING COUPONS VISUAL DESCRIPTION

February 21, 2013

Fiberglass

No change from baseline observation.

Hastelloy

No change from baseline observation.

Stainless Steel

No change from baseline observation.

Fiberglass Coupon

Date: 08/06/2013

Wt.: 7.309 Grams

Prior to Waste Exposure

316L
C1562

Stainless Steel Coupon

ID: 316L / C1562

Date: 08/06/2013

Wt.: 10.848 grams

Prior to Waste Exposure

C276

1

Hastelloy Coupon

ID: C267 (1)

Date: 08/06/2013

Wt.: 13.330 Grams

Prior to Waste Exposure



Fiberglass Coupon

Date: 2/21/14

Weight: 7.306 grams

316L
C1562

Stainless Steel Coupon

Date: 2/21/14

ID: 316L/# C1562

Weight: 10.846 grams

C276

!

Hastelloy Coupon

Date: 2/21/14

ID: C267(1)

Weight: 13.329 grams

CORROSION MONITORING PLAN
COUPON SUMMARY

Date	Hastelloy	Stainless Steel	Fiberglass	
	(C267)	(316L)	(Redbox)	
12/19/2013	13.330 g	10.848 g	7.309 g	Initial Mass @ start up
2/21/2014	13.329 g	10.846 g	7.306 g	
3/10/2014	13.327 g	10.845 g	7.300 g	

**INJECTION
FINGERPRINTS**

FINGERPRINT FORM

ENVIRONMENTAL GEO-TECHNOLOGIES, LLC.

RECEIVING & APPROVAL FORM

RECEIVING INFORMATION	
Date	02/03/14
Receiving ID#	I 02031401
Manifest# Line:	
Land Ban Cert included	Yes No
EGT Approval #	A
Generator	EGT
Client	
Transporter	
Time in	
Time out	
Received by	J.H.
Sampled by	J.H.

COPY

LAB INFORMATION:		Oilfield Brines Only:	
All Waste Shipments:		Barium	
Compatible? (RT#)	Yes No	Calcium	
PCBs (ppm)(Oily Waste Only)?		Total Iron	
TOC (ppm)(CC Waste Only)?		Magnesium	
Flash Point (°F)	> 140	Sodium Chloride	
pH (S.U.)	13.4 12.9 J.H.	Bicarbonate	
Cyanides? (mg/L)		Carbonate	
Sulfides? (ppm)		TDS	4.47
Specific Gravity	1.05	Resistivity	
Physical Description		Sulfate	
Stream Consistency	Yes No		
Oil in Sample	Yes No		
Temperature	66°F		
Conductivity	88.6 mS		
% Solids	< 0.1		
Turbidity	Yes No		
Color (visual)			
TSS (%)	< 0.1		
Radiation Screen (as needed)			
Lab Signature	J.P. [Signature]		

FINGERPRINT FORM

ENVIRONMENTAL GEO-TECHNOLOGIES, LLC.

RECEIVING & APPROVAL FORM

RECEIVING INFORMATION	
Date	02/05/14
Receiving ID#	102051402
Manifest# Line:	
Land Ban Cert included	Yes No
EGT Approval #	
Generator	
Client	
Transporter	
Time in	
Time out	
Received by	J.H.
Sampled by	W.A.R.

COPY

LAB INFORMATION		Oilfield Brines Only	
All Waste Shipments:		Barium	
Compatible? (RT#)	Yes No	Calcium	
PCBs (ppm)(Oily Waste Only)?		Total Iron	
TOC (ppm)(CC Waste Only)?		Magnesium	
Flash Point (°F)	> 140	Sodium Chloride	
pH (S.U.)	4.9	Bicarbonate	
Cyanides? (mg/L)		Carbonate	
Sulfides? (ppm)		TDS	3.87
Specific Gravity	1.10	Resistivity	
Physical Description		Sulfate	
Stream Consistency	Yes No		
Oil in Sample	Yes No		
Temperature	58		
Conductivity	75.9 mS		
% Solids	< 0.1		
Turbidity	Yes No		
Color (visual)			
TSS (%)	< 0.1		
Radiation Screen (as needed)			
Lab Signature			

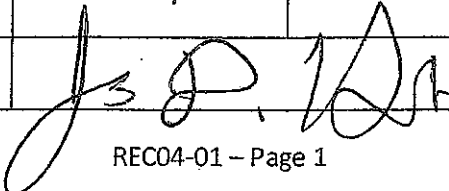
FINGERPRINT FORM

ENVIRONMENTAL GEO-TECHNOLOGIES, LLC.

RECEIVING & APPROVAL FORM

RECEIVING INFORMATION	
Date	02/05/14
Receiving ID#	I 0205/401
Manifest# Line:	
Land Ban Cert included	Yes No
EGT Approval #	
Generator	
Client	
Transporter	
Time in	
Time out	
Received by	J.H.
Sampled by	J.H.

COPY

LAB INFORMATION:		Oilfield Brines Only	
All Waste Shipments:			
Compatible? (RT#)	Yes No	Barium	
PCBs (ppm)(Oily Waste Only)?		Calcium	
TOC (ppm)(CC Waste Only)?		Total Iron	
Flash Point (°F)	> 140	Magnesium	
pH (S.U.)	12.9	Sodium Chloride	
Cyanides? (mg/L)		Bicarbonate	
Sulfides? (ppm)		Carbonate	
Specific Gravity	1.01	TDS	0.67
Physical Description		Resistivity	
Stream Consistency	Yes No	Sulfate	
Oil in Sample	Yes No		
Temperature	60°F		
Conductivity	11.3 mS		
% Solids	0.1		
Turbidity	Yes No		
Color (visual)			
TSS (%)	0.1		
Radiation Screen (as needed)			
Lab Signature			

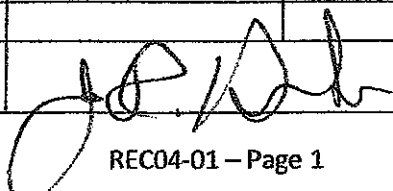
FINGERPRINT FORM

ENVIRONMENTAL GEO-TECHNOLOGIES, LLC.

RECEIVING & APPROVAL FORM

RECEIVING INFORMATION	
Date	02/07/14
Receiving ID#	I 02071401
Manifest# Line:	
Land Ban Cert included	Yes No
EGT Approval #	A
Generator	EGT
Client	
Transporter	
Time in	
Time out	
Received by	J.H.
Sampled by	R.H.

COPY

LAB INFORMATION:		Oilfield Brines Only:	
All Waste Shipments:			
Compatible? (RT#)	Yes No	Barium	
PCBs (ppm)(Oily Waste Only)?		Calcium	
TOC (ppm)(CC Waste Only)?		Total Iron	
Flash Point (°F)	> 140	Magnesium	
pH (S.U.)	2.5	Sodium Chloride	
Cyanides? (mg/L)		Bicarbonate	
Sulfides? (ppm)		Carbonate	
Specific Gravity	1.03	TDS	1.97
Physical Description		Resistivity	
Stream Consistency	Yes No	Sulfate	
Oil in Sample	Yes No		
Temperature	62°F		
Conductivity	37.2 mS		
% Solids	< 0.1		
Turbidity	Yes No		
Color (visual)			
TSS (%)	< 0.1		
Radiation Screen (as needed)			
Lab Signature			

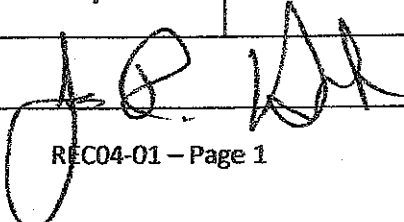
FINGERPRINT FORM

ENVIRONMENTAL GEO-TECHNOLOGIES, LLC.

RECEIVING & APPROVAL FORM

RECEIVING INFORMATION	
Date	02/11/14
Receiving ID#	I 0211/401
Manifest# Line:	
Land Ban Cert included	Yes No
EGT Approval #	A
Generator	EGT
Client	
Transporter	
Time in	
Time out	
Received by	J.H.
Sampled by	JH

COPY

LAB INFORMATION:		Oilfield Brines Only:	
All Waste Shipments:			
Compatible? (RT#)	<input checked="" type="radio"/> Yes No	Barium	
PCBs (ppm)(Oily Waste Only)?		Calcium	
TOC (ppm)(CC Waste Only)?		Total Iron	
Flash Point (°F)	> 140	Magnesium	
pH (S.U.)	0.4	Sodium Chloride	
Cyanides? (mg/L)		Bicarbonate	
Sulfides? (ppm)		Carbonate	
Specific Gravity	1.06	TDS	5.5% 13.5%, 5.1
Physical Description		Resistivity	
Stream Consistency	Yes No	Sulfate	
Oil in Sample	Yes No		
Temperature	63°F		
Conductivity	270.2 μS		
% Solids	< 0.1		
Turbidity	Yes No		
Color (visual)			
TSS (%)	< 0.1		
Radiation Screen (as needed)			
Lab Signature			

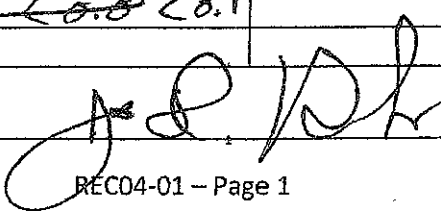
FINGERPRINT FORM

ENVIRONMENTAL GEO-TECHNOLOGIES, LLC.

RECEIVING & APPROVAL FORM

RECEIVING INFORMATION	
Date	02/12/14
Receiving ID#	15212/40
Manifest# Line:	
Land Ban Cert included	Yes No
EGT Approval #	A
Generator	EGT
Client	
Transporter	
Time in	
Time out	
Received by	J.H.
Sampled by	D.H.

COPY

LAB INFORMATION:		Oilfield Brines Only:	
All Waste Shipments:			
Compatible? (RT#)	(Yes) No	Barium	
PCBs (ppm)(Oily Waste Only)?		Calcium	
TOC (ppm)(CC Waste Only)?		Total Iron	
Flash Point (°F)	> 140	Magnesium	
pH (S.U.)	1.3	Sodium Chloride	
Cyanides? (mg/L)		Bicarbonate	
Sulfides? (ppm)		Carbonate	
Specific Gravity	1.01	TDS	0.99
Physical Description		Resistivity	
Stream Consistency	Yes No	Sulfate	
Oil in Sample	Yes No		
Temperature	58°F		
Conductivity	17.8 mS		
% Solids	< 0.01		
Turbidity	Yes No		
Color (visual)			
TSS (%)	< 0.01		
Radiation Screen (as needed)			
Lab Signature			

FINGERPRINT FORM

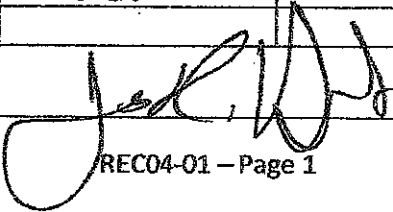
ENVIRONMENTAL GEO-TECHNOLOGIES, LLC

RECEIVING & APPROVAL FORM

RECEIVING INFORMATION

Date	2/12/14	
Receiving ID#	I 02121402	
Manifest#	Line:	
Land Ban Cert included	Yes	No
EGT Approval #	A	
Generator	EGT	
Client		
Transporter		
Time in		
Time out		
Received by	J.H.	
Sampled by	D.H.	

COPY

LAB INFORMATION:		Oilfield Brines Only:	
All Waste Shipments:			
Compatible? (RT#)	<input checked="" type="radio"/> Yes <input type="radio"/> No	Barium	
PCBs (ppm)(Oily Waste Only)?		Calcium	
TOC (ppm)(CC Waste Only)?		Total Iron	
Flash Point (°F)	140	Magnesium	
pH (S.U.)	13.1	Sodium Chloride	
Cyanides? (mg/L)		Bicarbonate	
Sulfides? (ppm)		Carbonate	
Specific Gravity	1.03	TDS	3.37
Physical Description		Resistivity	
Stream Consistency	Yes <input type="radio"/> No <input type="radio"/>	Sulfate	
Oil in Sample	Yes <input type="radio"/> No <input type="radio"/>		
Temperature	64°F		
Conductivity	66.8 mS		
% Solids	<0.1		
Turbidity	Yes <input type="radio"/> No <input type="radio"/>		
Color (visual)			
TSS (%)	<0.1		
Radiation Screen (as needed)			
Lab Signature			

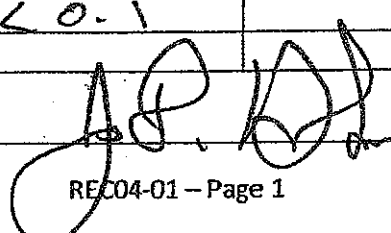
FINGERPRINT FORM

ENVIRONMENTAL GEO-TECHNOLOGIES, LLC.

RECEIVING & APPROVAL FORM

RECEIVING INFORMATION	
Date	02/13/14
Receiving ID#	102131401
Manifest# Line:	
Land Ban Cert included	Yes No
EGT Approval #	
Generator	
Client	
Transporter	
Time in	
Time out	
Received by	J.P.
Sampled by	WH

COPY

LAB INFORMATION: All Waste Shipments:		Oilfield Brines Only:	
Compatible? (RT#)	Yes No	Barium	
PCBs (ppm)(Oily Waste Only)?		Calcium	
TOC (ppm)(CC Waste Only)?		Total Iron	
Flash Point (°F)	> 140	Magnesium	
pH (S.U.)	12.5	Sodium Chloride	
Cyanides? (mg/L)		Bicarbonate	
Sulfides? (ppm)		Carbonate	
Specific Gravity	1.00	TDS	0.37
Physical Description	liquid	Resistivity	
Stream Consistency	Yes No	Sulfate	
Oil in Sample	Yes No		
Temperature	60°F		
Conductivity	7.8mS		
% Solids	< 0.1		
Turbidity	Yes No		
Color (visual)			
TSS (%)	< 0.1		
Radiation Screen (as needed)			
Lab Signature			

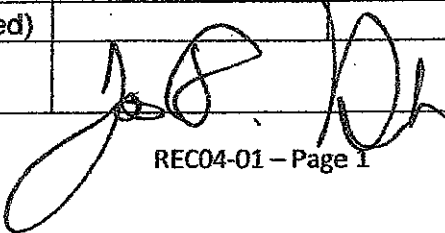
FINGERPRINT FORM

ENVIRONMENTAL GEO-TECHNOLOGIES, LLC.

RECEIVING & APPROVAL FORM

RECEIVING INFORMATION	
Date	2/14/14
Receiving ID#	102141401
Manifest# Line:	
Land Ban Cert included	Yes No
EGT Approval #	A
Generator	EGT
Client	
Transporter	
Time in	
Time out	
Received by	J.H.
Sampled by	D.H.

COPY

LAB INFORMATION:		Oilfield Brines Only:	
All Waste Shipments:			
Compatible? (RT#)	Yes No	Barium	
PCBs (ppm)(Oily Waste Only)?		Calcium	
TOC (ppm)(CC Waste Only)?		Total Iron	
Flash Point (°F)	> 140	Magnesium	
pH (S.U.)	3.8	Sodium Chloride	
Cyanides? (mg/L)		Bicarbonate	
Sulfides? (ppm)		Carbonate	
Specific Gravity	1.17	TDS	4.6%
Physical Description		Resistivity	
Stream Consistency	Yes No	Sulfate	
Oil in Sample	Yes No		
Temperature	67°F		
Conductivity	92.3 mS		
% Solids	< 0.1		
Turbidity	Yes No		
Color (visual)			
TSS (%)	< 0.1		
Radiation Screen (as needed)			
Lab Signature			

FINGERPRINT FORM

ENVIRONMENTAL GEO-TECHNOLOGIES, LLC.

RECEIVING & APPROVAL FORM

RECEIVING INFORMATION

Date	02/17/14	
Receiving ID#	I 02171401	
Manifest# Line:		
Land Ban Cert included	Yes	No
EGT Approval #	A	
Generator	EGT	
Client		
Transporter		
Time in		
Time out		
Received by	J.H.	
Sampled by	J.H.	

COPY

LAB INFORMATION:

All Waste Shipments:

Oilfield Brines Only:

Compatible? (RT#)	Yes	No	Barium	
PCBs (ppm)(Oily Waste Only)?			Calcium	
TOC (ppm)(CC Waste Only)?			Total Iron	
Flash Point (°F)	>	140	Magnesium	
pH (S.U.)		3.1	Sodium Chloride	
Cyanides? (mg/L)			Bicarbonate	
Sulfides? (ppm)			Carbonate	
Specific Gravity		1.14	TDS	5.17
Physical Description			Resistivity	
Stream Consistency	Yes	No	Sulfate	
Oil in Sample	Yes	No		
Temperature		66°F		
Conductivity		102.4 mS		
% Solids		< 0.1		
Turbidity	Yes	No		
Color (visual)				
TSS (%)		< 0.1		
Radiation Screen (as needed)				
Lab Signature				

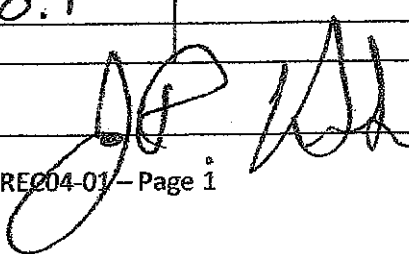
FINGERPRINT FORM

ENVIRONMENTAL GEO-TECHNOLOGIES, LLC.

RECEIVING & APPROVAL FORM

RECEIVING INFORMATION	
Date	2/18/14
Receiving ID#	I 62 481461
Manifest# Line:	
Land Ban Cert included	Yes No
EGT Approval #	A
Generator	EGT
Client	
Transporter	
Time in	
Time out	
Received by	J.H.
Sampled by	D.M.

COPY

LAB INFORMATION:		Oilfield Brines Only:	
All Waste Shipments:			
Compatible? (RT#)	Yes <input checked="" type="radio"/> No	Barium	
PCBs (ppm)(Oily Waste Only)?		Calcium	
TOC (ppm)(CC Waste Only)?		Total Iron	
Flash Point (°F)	> 140	Magnesium	
pH (S.U.)	0.8	Sodium Chloride	
Cyanides? (mg/L)		Bicarbonate	
Sulfides? (ppm)		Carbonate	
Specific Gravity	1.08	TDS	5.77
Physical Description		Resistivity	
Stream Consistency	Yes No	Sulfate	
Oil in Sample	Yes No		
Temperature	74°F		
Conductivity	114.4 mS		
% Solids	<0.1		
Turbidity	Yes No		
Color (visual)			
TSS (%)	<0.1		
Radiation Screen (as needed)			
Lab Signature			

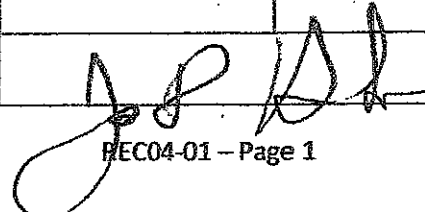
FINGERPRINT FORM

ENVIRONMENTAL GEO-TECHNOLOGIES, LLC.

RECEIVING & APPROVAL FORM

RECEIVING INFORMATION	
Date	2/19/14
Receiving ID#	102191401
Manifest# Line:	
Land Ban Cert included	Yes No
EGT Approval #	A
Generator	EGT
Client	
Transporter	
Time in	
Time out	
Received by	J.H.
Sampled by	D.H.

COPY

LAB INFORMATION:		Oilfield Brines Only:	
All Waste Shipments:			
Compatible? (RT#)	<input checked="" type="radio"/> Yes No	Barium	
PCBs (ppm)(Oily Waste Only)?		Calcium	
TOC (ppm)(CC Waste Only)?		Total Iron	
Flash Point (°F)	> 140	Magnesium	
pH (S.U.)	1.4	Sodium Chloride	
Cyanides? (mg/L)		Bicarbonate	
Sulfides? (ppm)		Carbonate	
Specific Gravity	1.02	TDS	1.29
Physical Description		Resistivity	
Stream Consistency	Yes No	Sulfate	
Oil in Sample	Yes No		
Temperature	65°F		
Conductivity	23.3 mS		
% Solids	< 0.1		
Turbidity	Yes No		
Color (visual)			
TSS (%)	< 0.1		
Radiation Screen (as needed)			
Lab Signature			

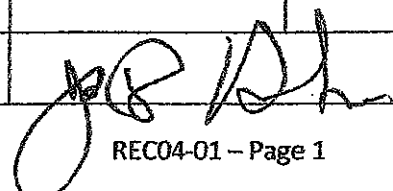
FINGERPRINT FORM

ENVIRONMENTAL GEO-TECHNOLOGIES, LLC.

RECEIVING & APPROVAL FORM

RECEIVING INFORMATION	
Date	2/19/14
Receiving ID#	102191402
Manifest# Line:	
Land Ban Cert included	Yes No
EGT Approval #	
Generator	
Client	
Transporter	
Time in	
Time out	
Received by	J.H.
Sampled by	D.H.

COPY

LAB INFORMATION:		Oilfield Brines Only:	
All Waste Shipments:		Barium	
Compatible? (RT#)	<input checked="" type="checkbox"/> Yes No	Calcium	
PCBs (ppm)(Oily Waste Only)?		Total Iron	
TOC (ppm)(CC Waste Only)?		Magnesium	
Flash Point (°F)	> 140	Sodium Chloride	
pH (S.U.)	12.2	Bicarbonate	
Cyanides? (mg/L)		Carbonate	
Sulfides? (ppm)		TDS	0.7%
Specific Gravity	1.03	Resistivity	
Physical Description		Sulfate	
Stream Consistency	Yes No		
Oil in Sample	Yes No		
Temperature	62°F		
Conductivity	14.5 mS		
% Solids	< 0.1		
Turbidity	Yes No		
Color (visual)			
TSS (%)	< 0.1		
Radiation Screen (as needed)			
Lab Signature			

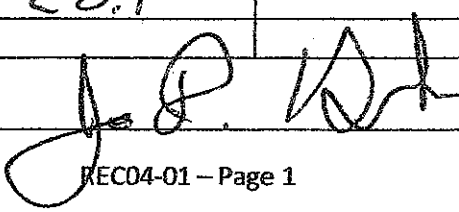
FINGERPRINT FORM

ENVIRONMENTAL GEO-TECHNOLOGIES, LLC.

RECEIVING & APPROVAL FORM

RECEIVING INFORMATION	
Date	02/20/14
Receiving ID#	102201401
Manifest# Line:	
Land Ban Cert included	Yes No
EGT Approval #	A
Generator	EGT
Client	
Transporter	
Time in	
Time out	
Received by	J.H.
Sampled by	DAK

COPY

LAB INFORMATION:		Oilfield Brines Only:	
All Waste Shipments:			
Compatible? (RT#)	Yes No	Barium	
PCBs (ppm)(Oily Waste Only)?		Calcium	
TOC (ppm)(CC Waste Only)?		Total Iron	
Flash Point (°F)	140	Magnesium	
pH (S.U.)	13.2	Sodium Chloride	
Cyanides? (mg/L)		Bicarbonate	
Sulfides? (ppm)		Carbonate	
Specific Gravity	1.09	TDS	6.47
Physical Description		Resistivity	
Stream Consistency	Yes No	Sulfate	
Oil in Sample	Yes No		
Temperature	69°F		
Conductivity	128.6 mS		
% Solids	0.1		
Turbidity	Yes No		
Color (visual)			
TSS (%)	0.1		
Radiation Screen (as needed)			
Lab Signature			

FINGERPRINT FORM

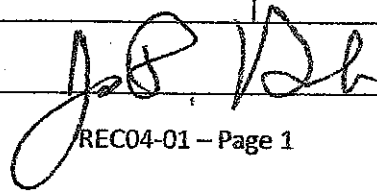
ENVIRONMENTAL GEO-TECHNOLOGIES, LLC.

RECEIVING & APPROVAL FORM

16478

RECEIVING INFORMATION	
Date	02/24/14
Receiving ID#	I 02241401
Manifest# Line:	
Land Ban Cert included	Yes No
EGT Approval #	A
Generator	EGT
Client	
Transporter	
Time in	
Time out	
Received by	J.H.
Sampled by	D.H.

COPY

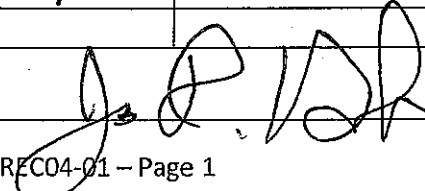
LAB INFORMATION:		Oilfield Brines Only:	
All Waste Shipments:			
Compatible? (RT#)	<input checked="" type="radio"/> Yes <input type="radio"/> No	Barium	
PCBs (ppm)(Oily Waste Only)?		Calcium	
TOC (ppm)(CC Waste Only)?		Total Iron	
Flash Point (°F)	> 140	Magnesium	
pH (S.U.)	2.6	Sodium Chloride	
Cyanides? (mg/L)		Bicarbonate	
Sulfides? (ppm)		Carbonate	
Specific Gravity	1.07	TDS	3.39
Physical Description		Resistivity	
Stream Consistency	Yes No	Sulfate	
Oil in Sample	Yes No		
Temperature	64°F		
Conductivity	64.9		
% Solids	< 0.1		
Turbidity	Yes No		
Color (visual)			
TSS (%)	< 0.1		
Radiation Screen (as needed)			
Lab Signature			

FINGERPRINT FORM

ENVIRONMENTAL GEO-TECHNOLOGIES, LLC.

RECEIVING & APPROVAL FORM

RECEIVING INFORMATION	
Date	02/25/14
Receiving ID#	102251401
Manifest# Line:	
Land Ban Cert included	Yes No
EGT Approval #	A
Generator	EGT
Client	
Transporter	
Time in	
Time out	
Received by	J.M. DM
Sampled by	

LAB INFORMATION:		Oilfield Brines Only:	
All Waste Shipments:			
Compatible? (RT#)	Yes No	Barium	
PCBs (ppm)(Oily Waste Only)?		Calcium	
TOC (ppm)(CC Waste Only)?		Total Iron	
Flash Point (°F)	> 140	Magnesium	
pH (S.U.)	3.2	Sodium Chloride	
Cyanides? (mg/L)		Bicarbonate	
Sulfides? (ppm)		Carbonate	
Specific Gravity	1.02	TDS	1.47
Physical Description		Resistivity	
Stream Consistency	Yes No	Sulfate	
Oil in Sample	Yes No		
Temperature	65°F		
Conductivity	27.3 mS		
% Solids	< 0.1		
Turbidity	Yes No		
Color (visual)			
TSS (%)	< 0.1		
Radiation Screen (as needed)			
Lab Signature			

FINGERPRINT FORM

ENVIRONMENTAL GEO-TECHNOLOGIES, LLC.

RECEIVING & APPROVAL FORM

RECEIVING INFORMATION	
Date	02/26/14
Receiving ID#	I 02761401
Manifest# Line:	
Land Ban Cert included	Yes No
EGT Approval #	A
Generator	EGT
Client	
Transporter	
Time in	
Time out	
Received by	J.H.
Sampled by	AR

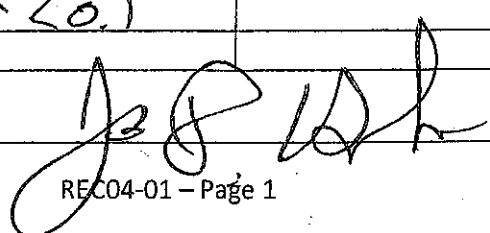
LAB INFORMATION:		Oilfield Brines Only:	
All Waste Shipments:			
Compatible? (RT#)	<input checked="" type="radio"/> Yes <input type="radio"/> No	Barium	
PCBs (ppm)(Oily Waste Only)?		Calcium	
TOC (ppm)(CC Waste Only)?		Total Iron	
Flash Point (°F)	> 140	Magnesium	
pH (S.U.)	13.6	Sodium Chloride	
Cyanides? (mg/L)		Bicarbonate	
Sulfides? (ppm)		Carbonate	
Specific Gravity	1.05	TDS	3.6%
Physical Description		Resistivity	
Stream Consistency	Yes No	Sulfate	
Oil in Sample	Yes No		
Temperature	65°F		
Conductivity	71.2 mS		
% Solids	<0.1		
Turbidity	Yes No		
Color (visual)			
TSS (%)	<0.1		
Radiation Screen (as needed)			
Lab Signature			

FINGERPRINT FORM

ENVIRONMENTAL GEO-TECHNOLOGIES, LLC.

RECEIVING & APPROVAL FORM

RECEIVING INFORMATION	
Date	02/27/14
Receiving ID#	102271401
Manifest# Line:	
Land Ban Cert included	Yes No
EGT Approval #	
Generator	
Client	
Transporter	
Time in	
Time out	
Received by	JH
Sampled by	JH

LAB INFORMATION:		Oilfield Brines Only:	
All Waste Shipments:			
Compatible? (RT#)	Yes No	Barium	
PCBs (ppm)(Oily Waste Only)?		Calcium	
TOC (ppm)(CC Waste Only)?		Total Iron	
Flash Point (°F)		Magnesium	
pH (S.U.)	9.3	Sodium Chloride	
Cyanides? (mg/L)		Bicarbonate	
Sulfides? (ppm)		Carbonate	
Specific Gravity	1.06	TDS	2.57
Physical Description		Resistivity	
Stream Consistency	Yes No	Sulfate	
Oil in Sample	Yes No		
Temperature	74°F		
Conductivity	52.5 mS		
% Solids			
Turbidity	Yes No		
Color (visual)			
TSS (%)	<0.1		
Radiation Screen (as needed)			
Lab Signature			

**WASTE STREAMS
CHARACTERIZATIONS**